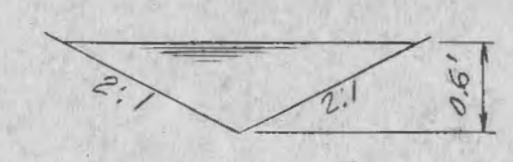


d = 0.6'  
 s = 0.074%  
 a = 0.12°  
 wp = 2.68'

DEMAND Q = 1.61



$$V = 1.486 / 0.5 (0.074 / 2.68)^{2/3} (0.12)^{1/2}$$

$$= 29.72 (0.416) (.292)$$

$$= 3.36 \text{ fps}$$

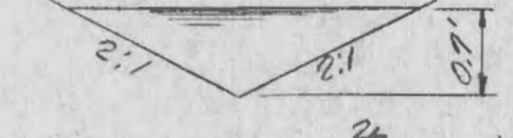
$$Q = 3.36 (0.72)$$

$$Q = 2.42$$

EMERGENCY RELIEF SWALE  
 LOT 172 Saddleback Court

d = 0.7'  
 s = 0.088%  
 a = 0.98°  
 wp = 3.13'

DEMAND Q = 2.52



$$V = 1.486 / 0.5 (0.088 / 3.13)^{2/3} (0.98)^{1/2}$$

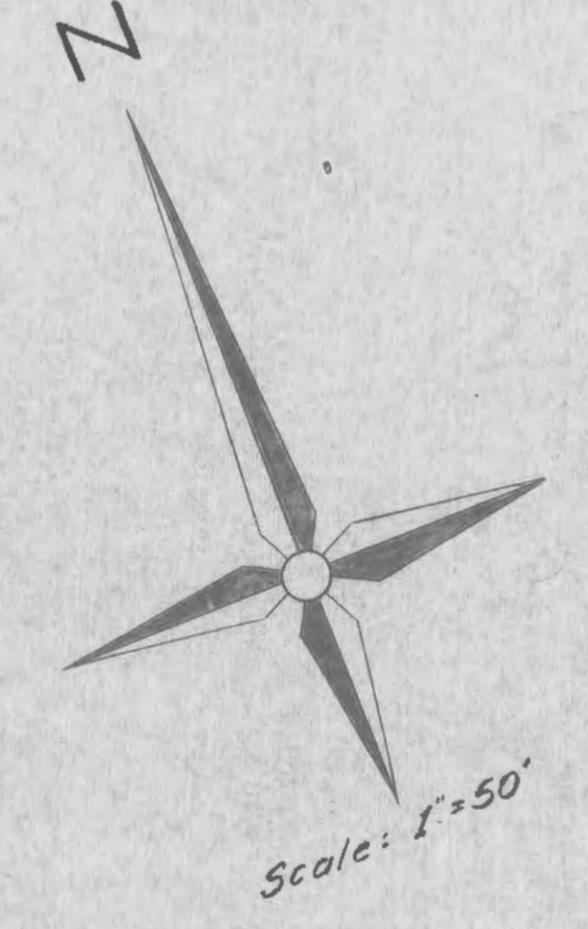
$$= 29.72 (0.461) (.219)$$

$$= 3.00 \text{ fps}$$

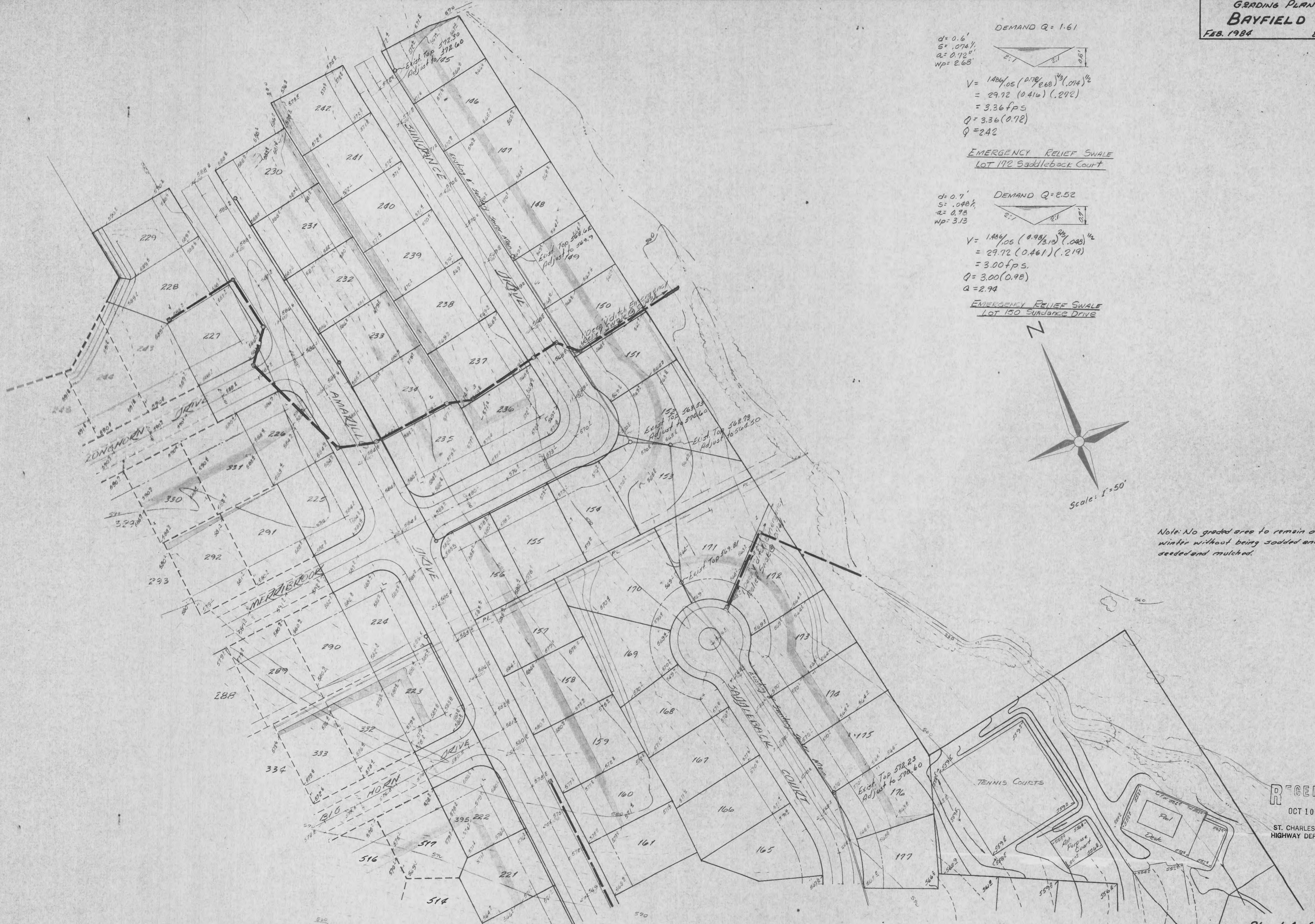
$$Q = 3.00 (0.98)$$

$$Q = 2.94$$

EMERGENCY RELIEF SWALE  
 LOT 150 Sundareg Drive



Note: No graded area to remain over winter without being sodded and/or seeded and mulched.



RECEIVED  
 OCT 10 1984  
 ST. CHARLES COUNTY  
 HIGHWAY DEPARTMENT.