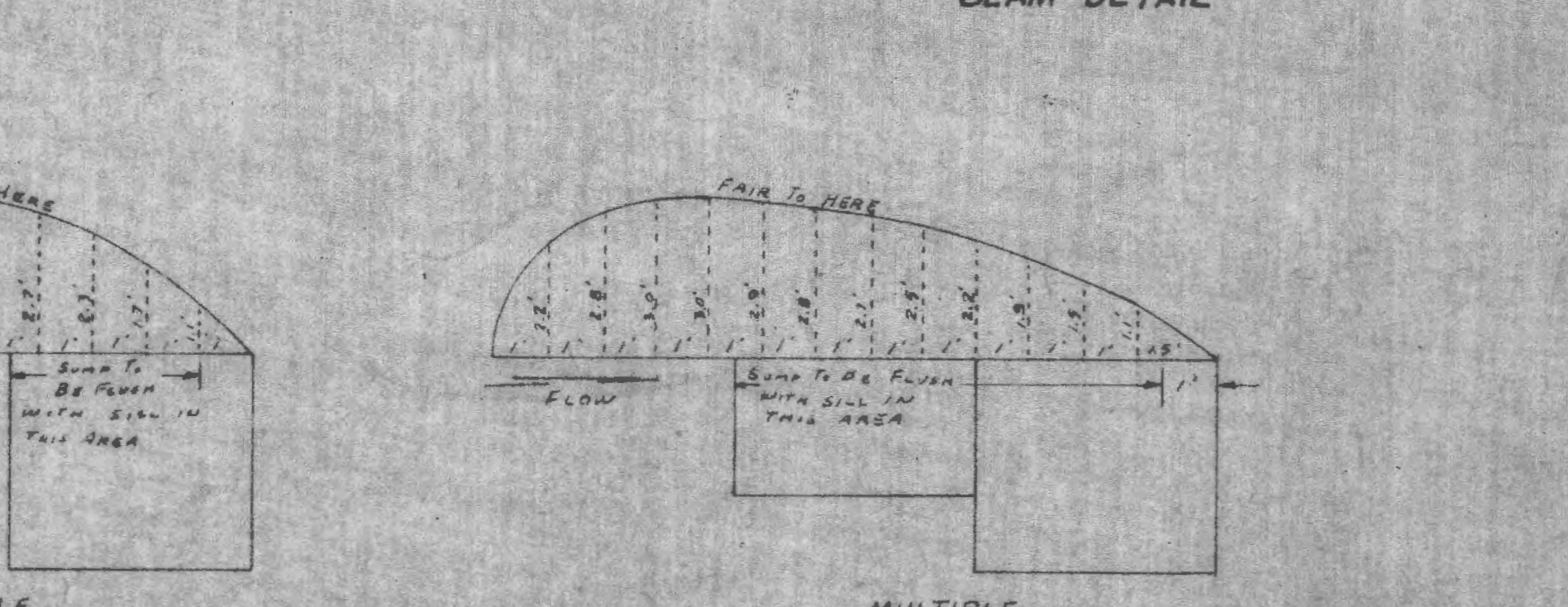
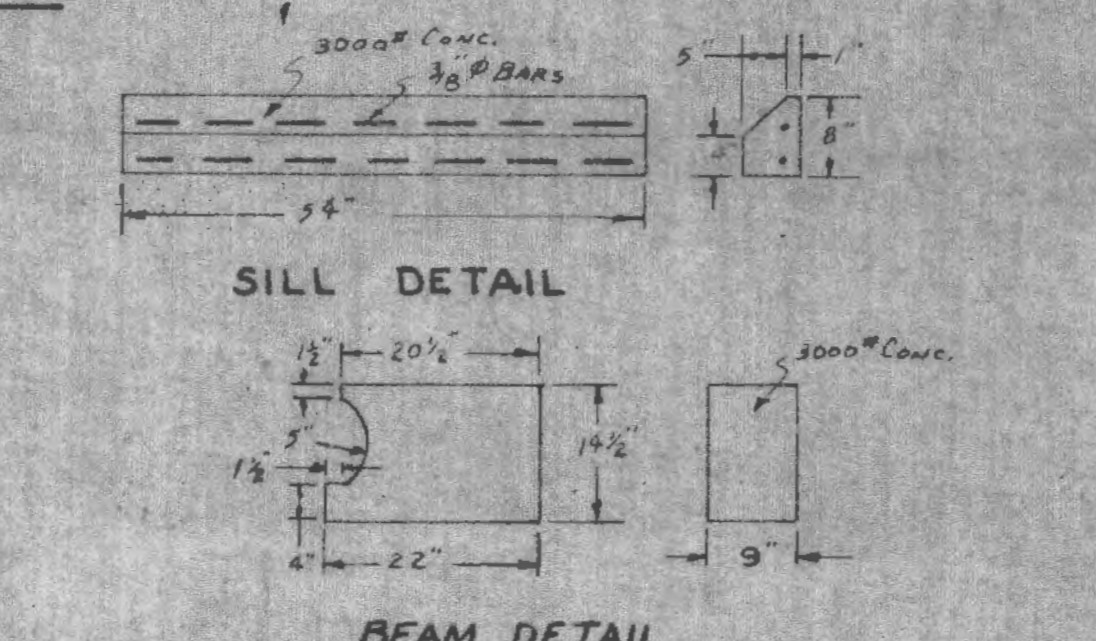
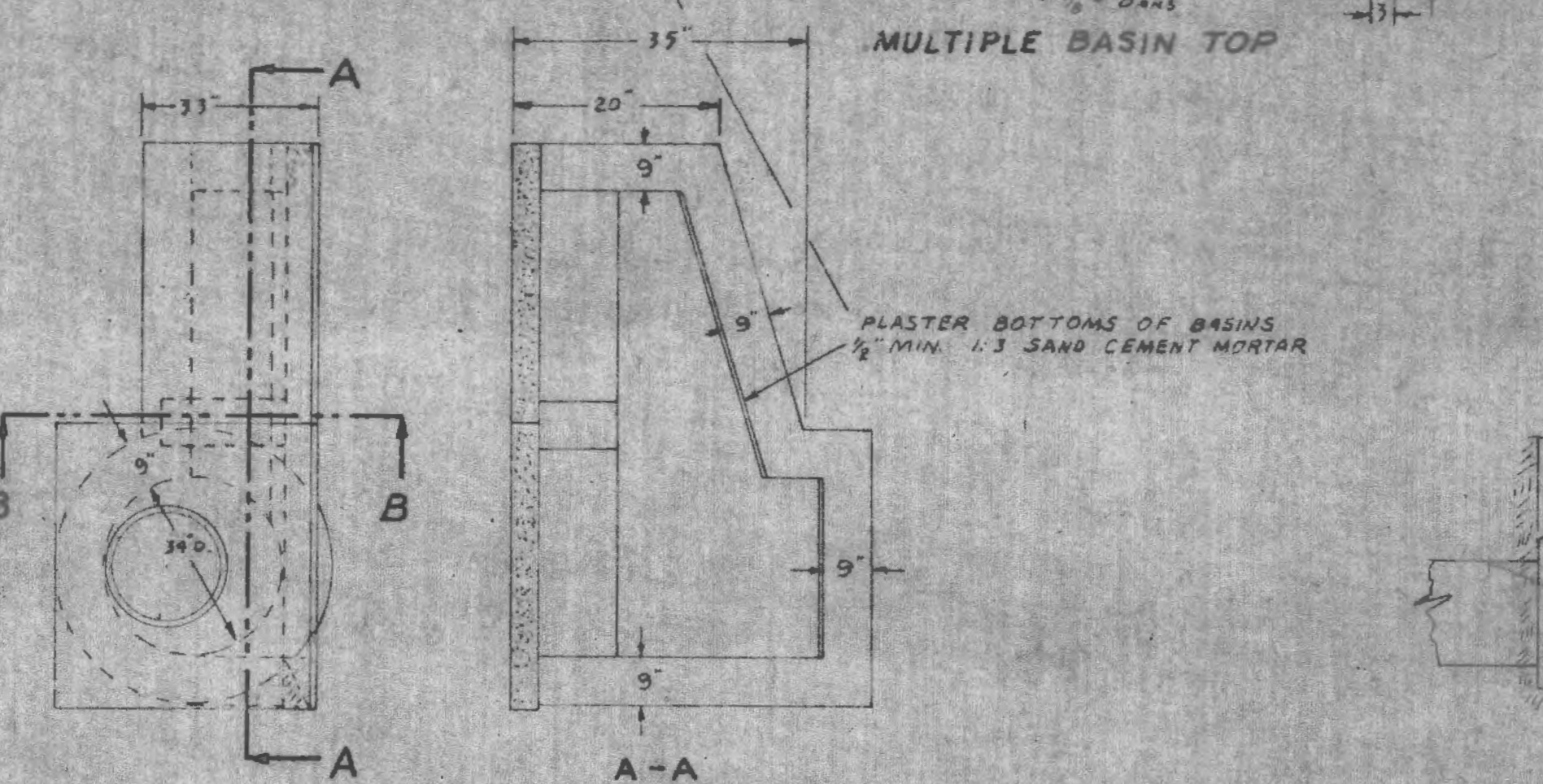
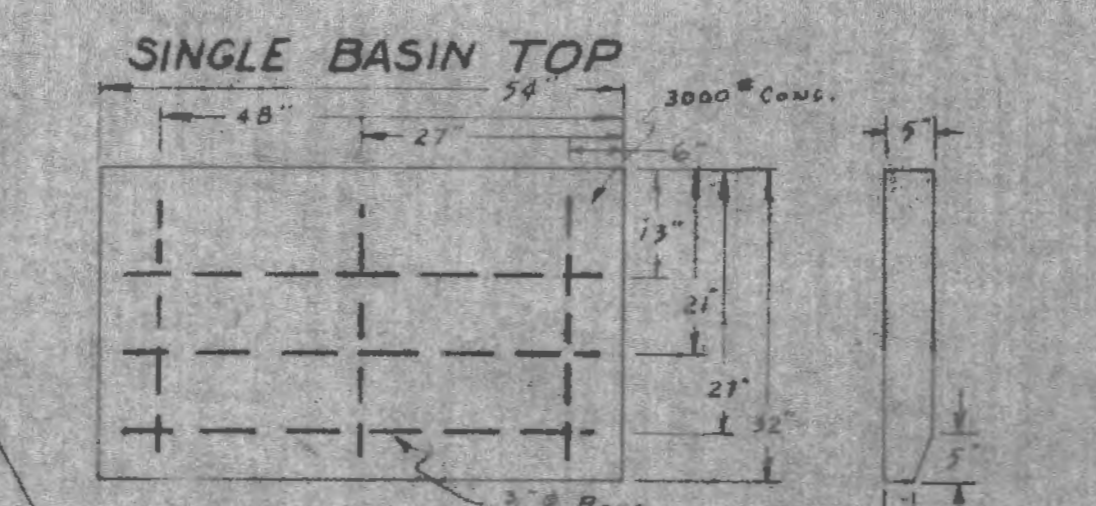
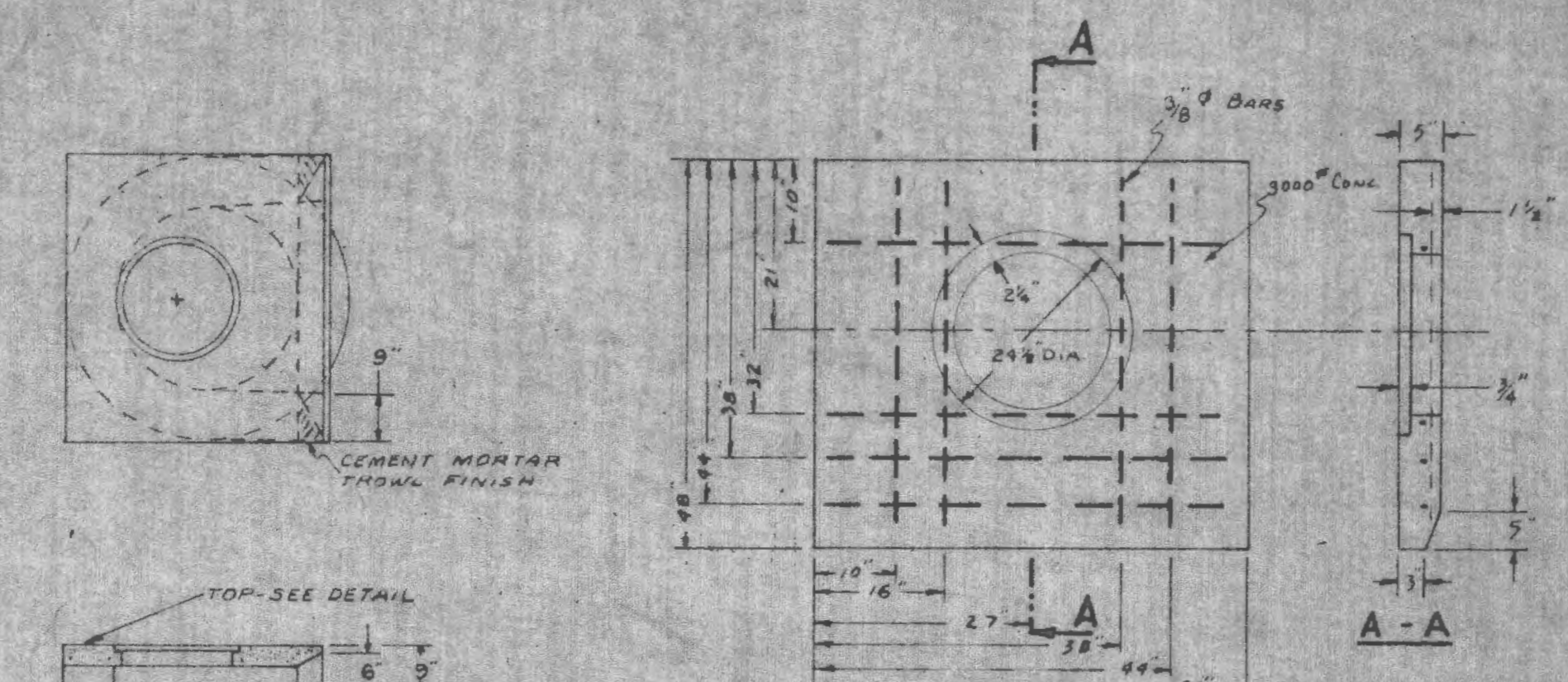
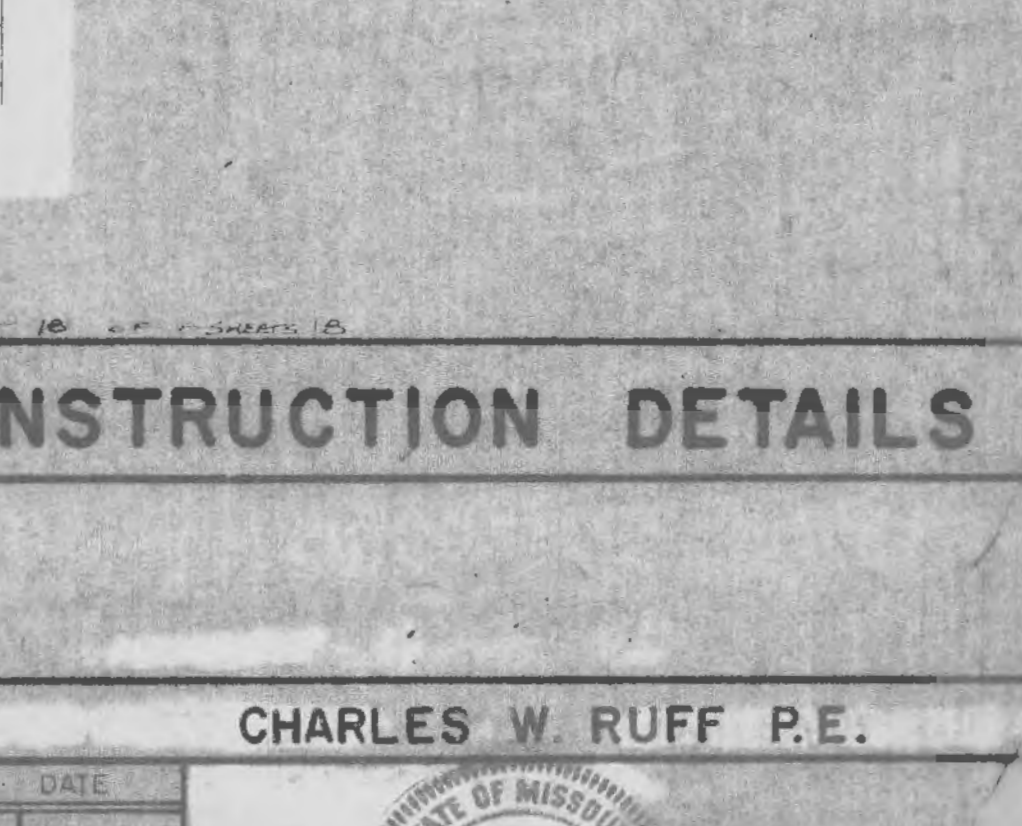
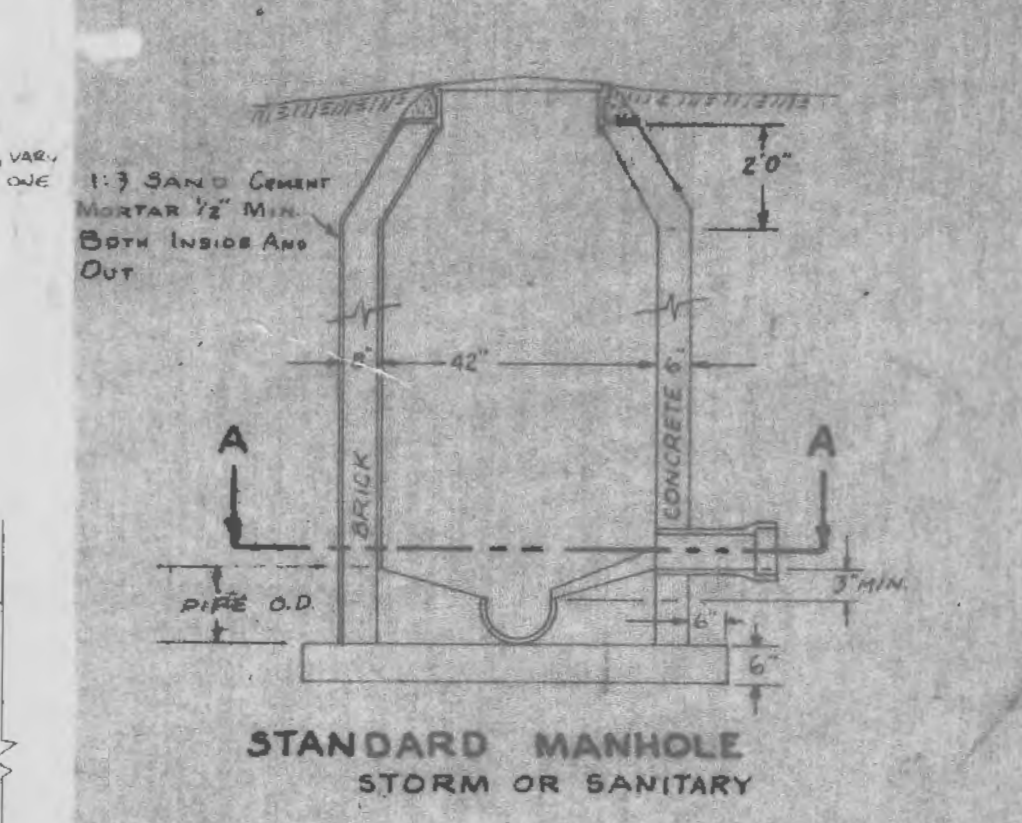
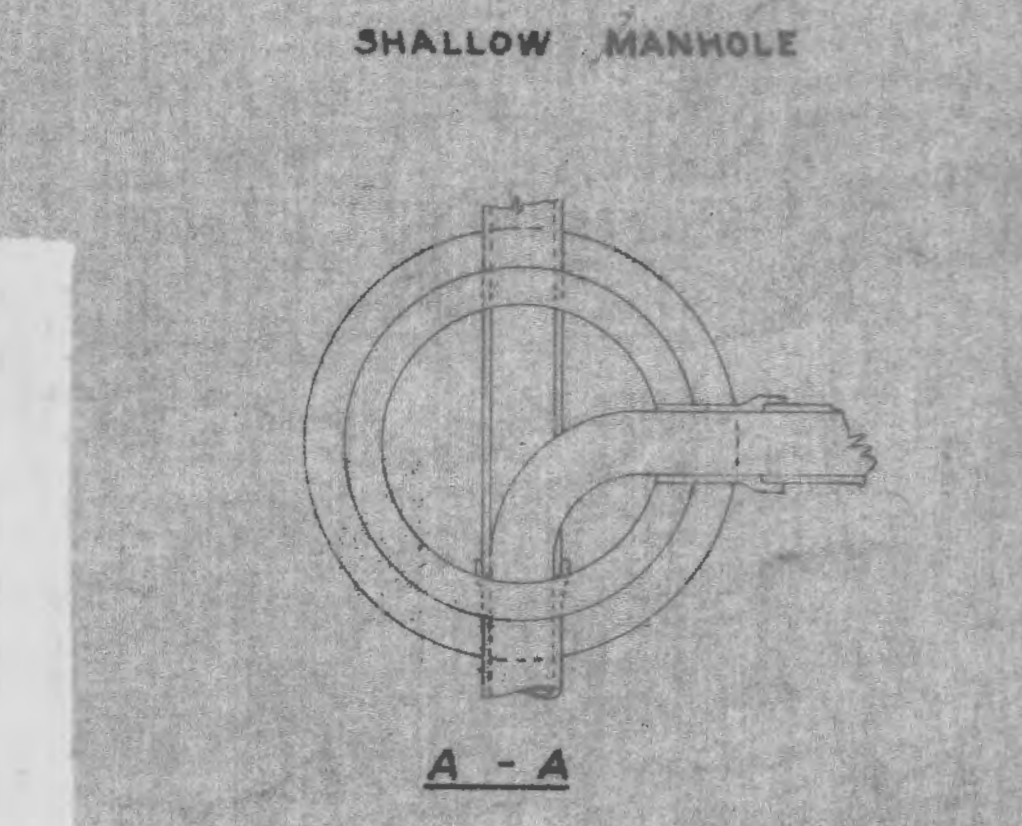
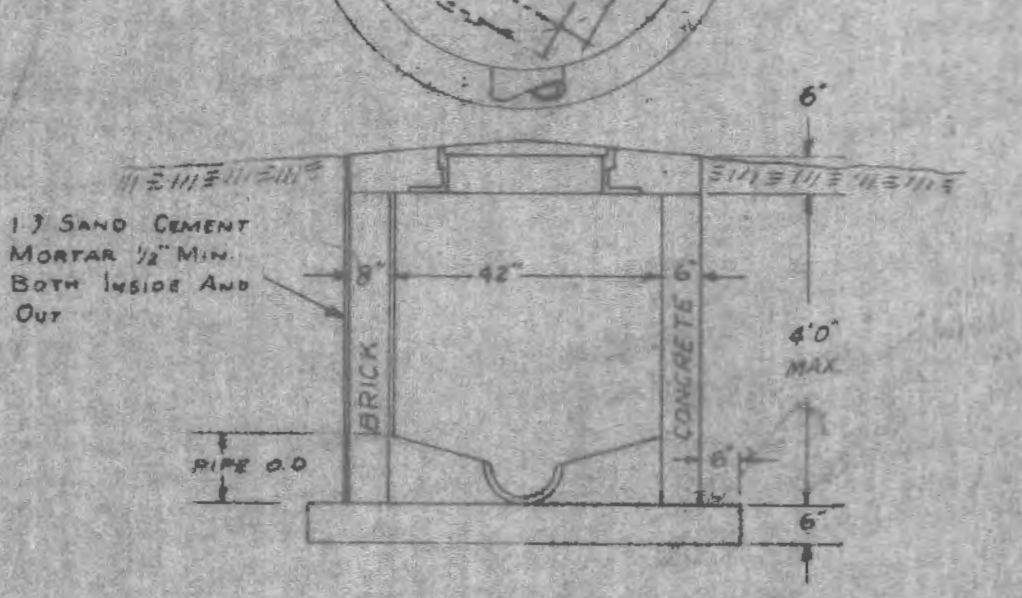
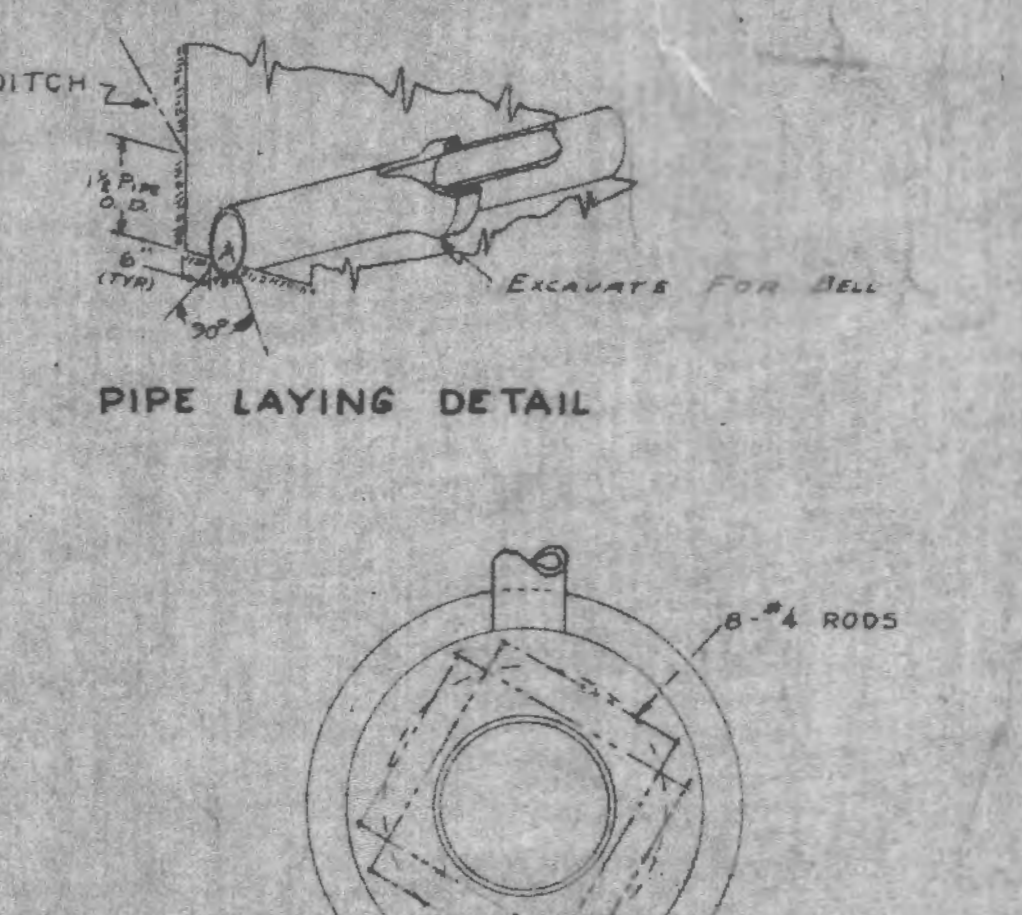
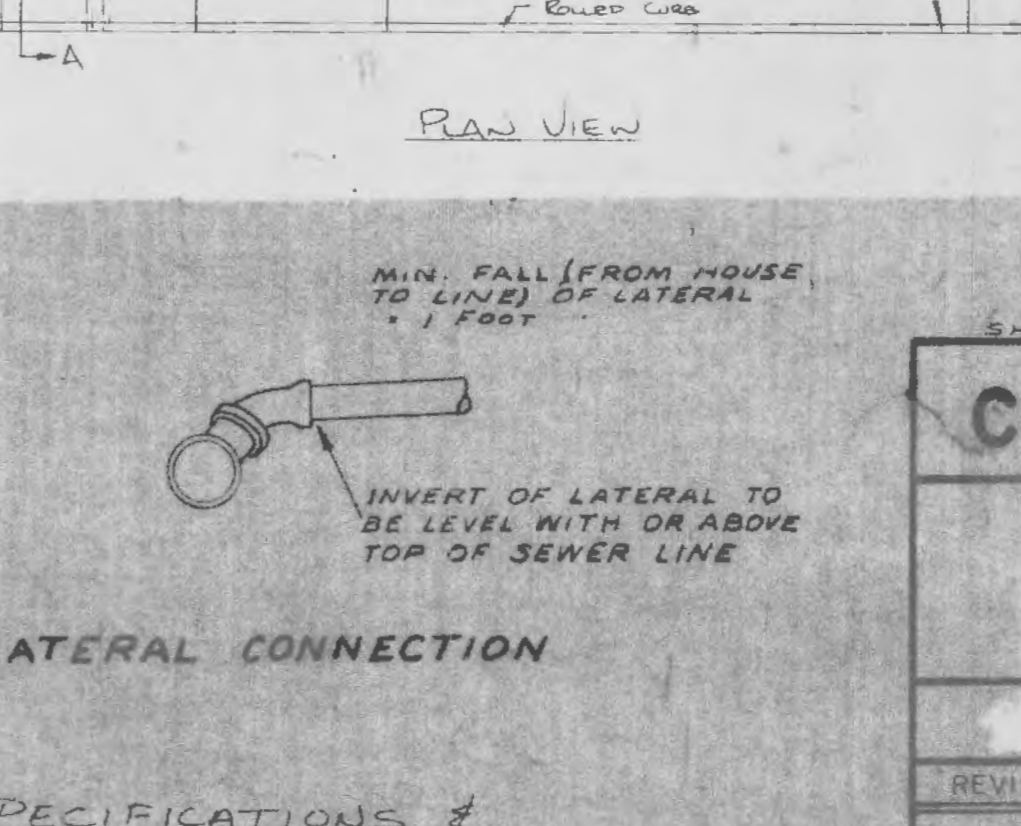
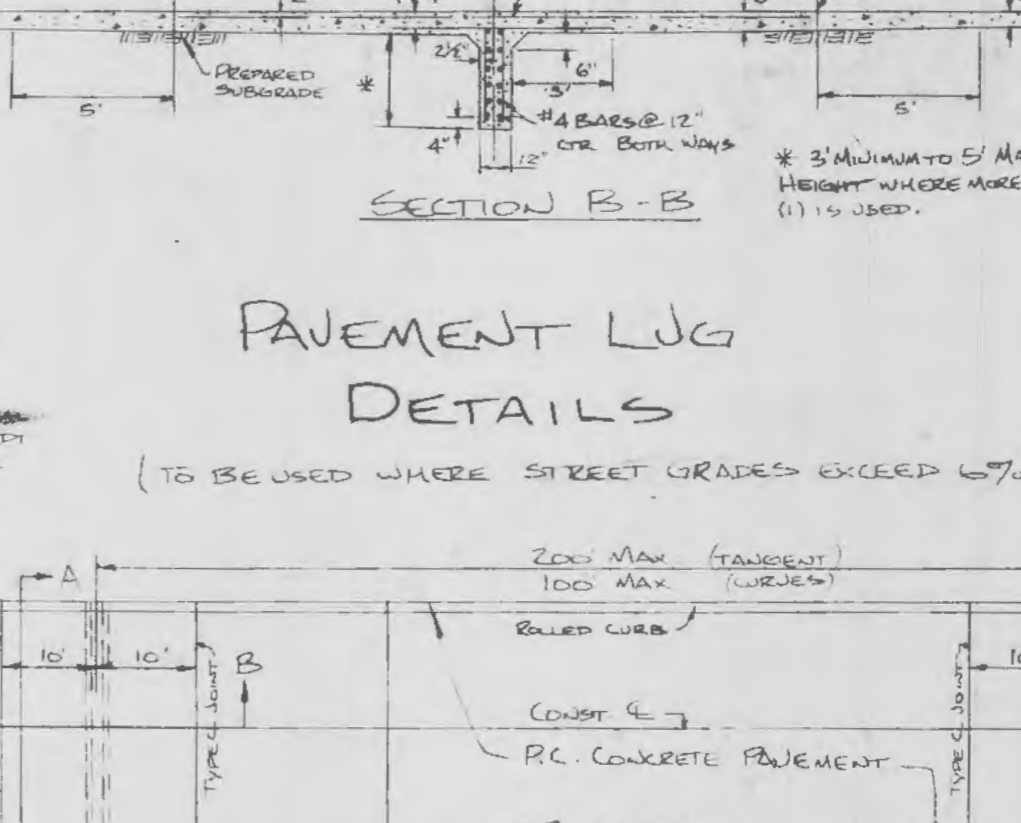
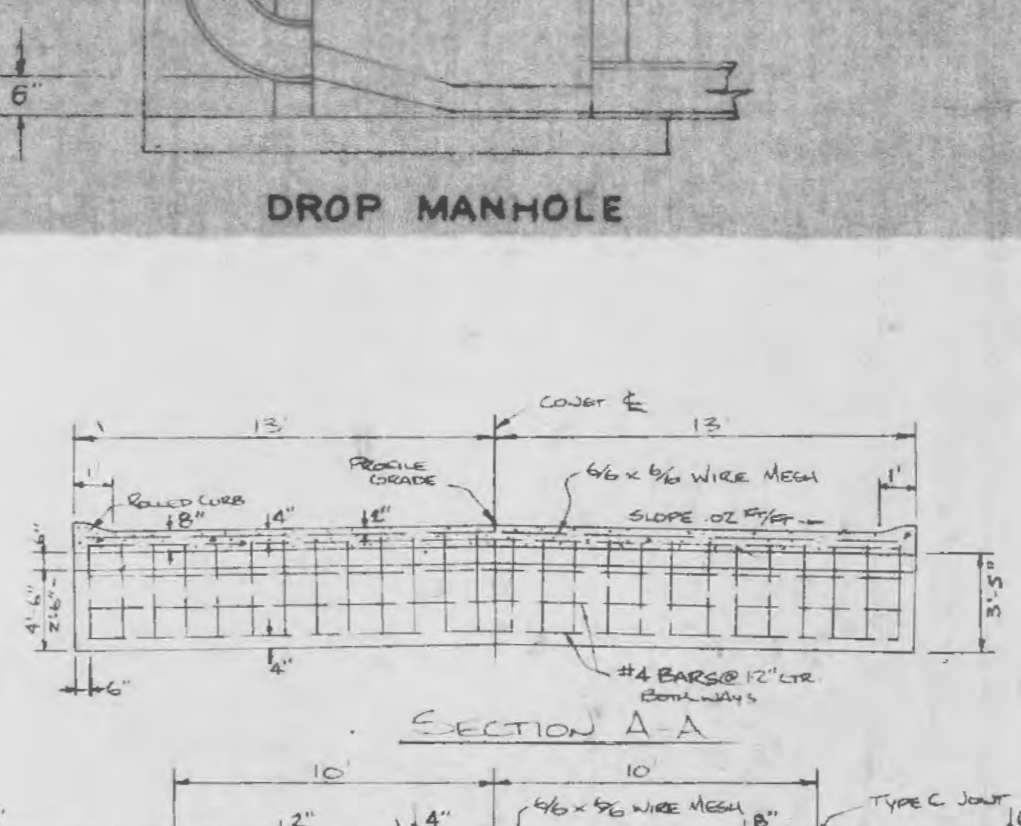
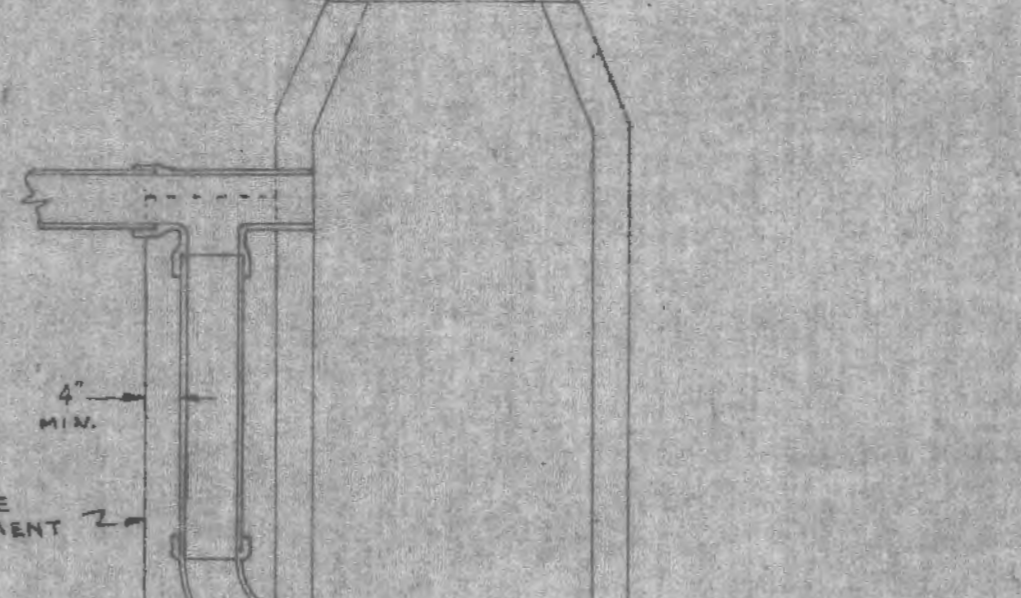
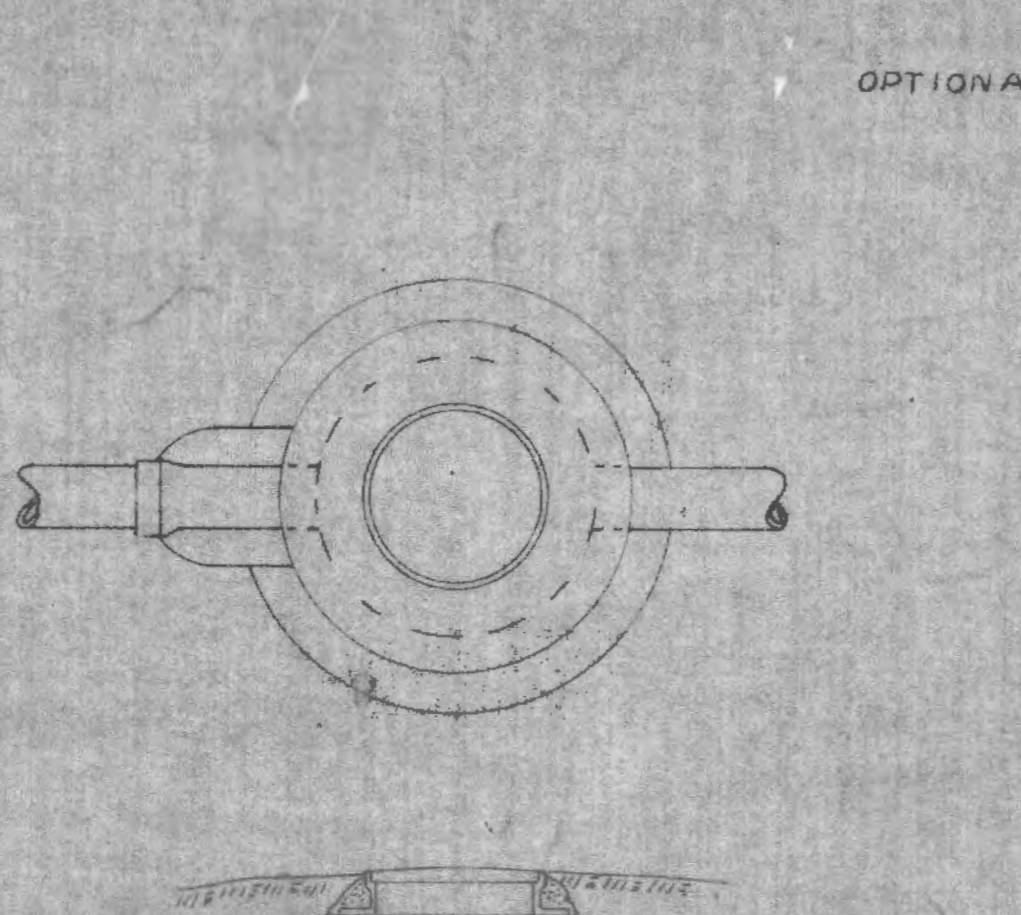
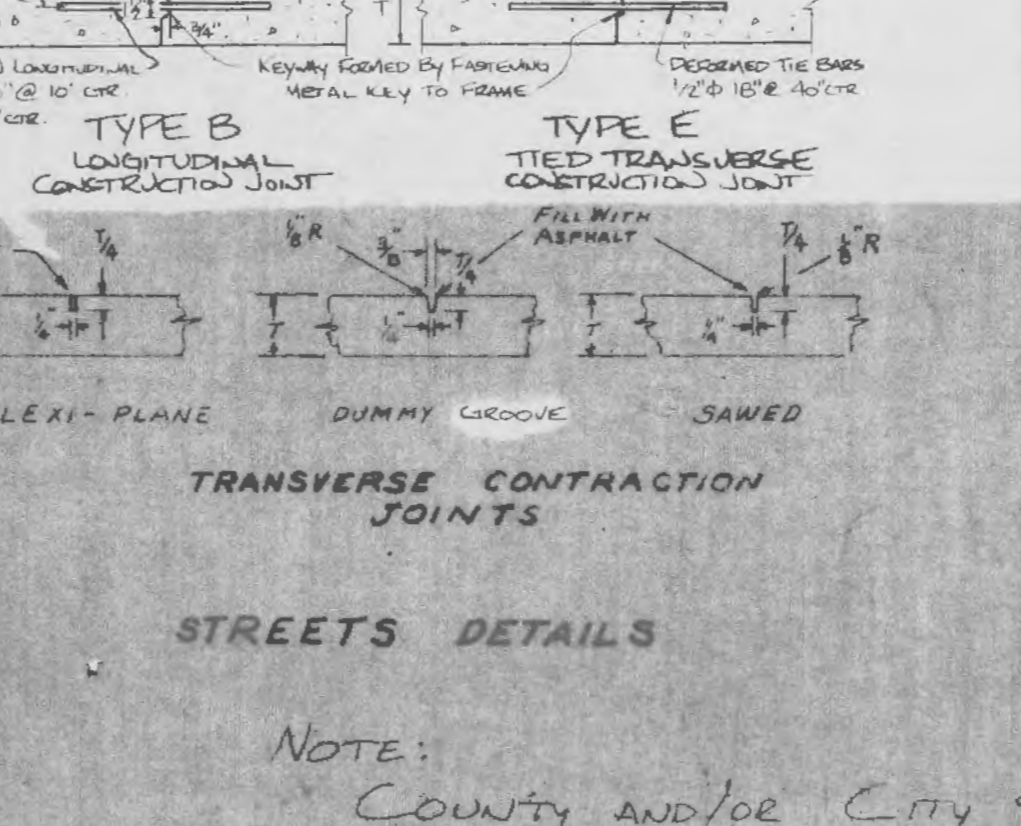
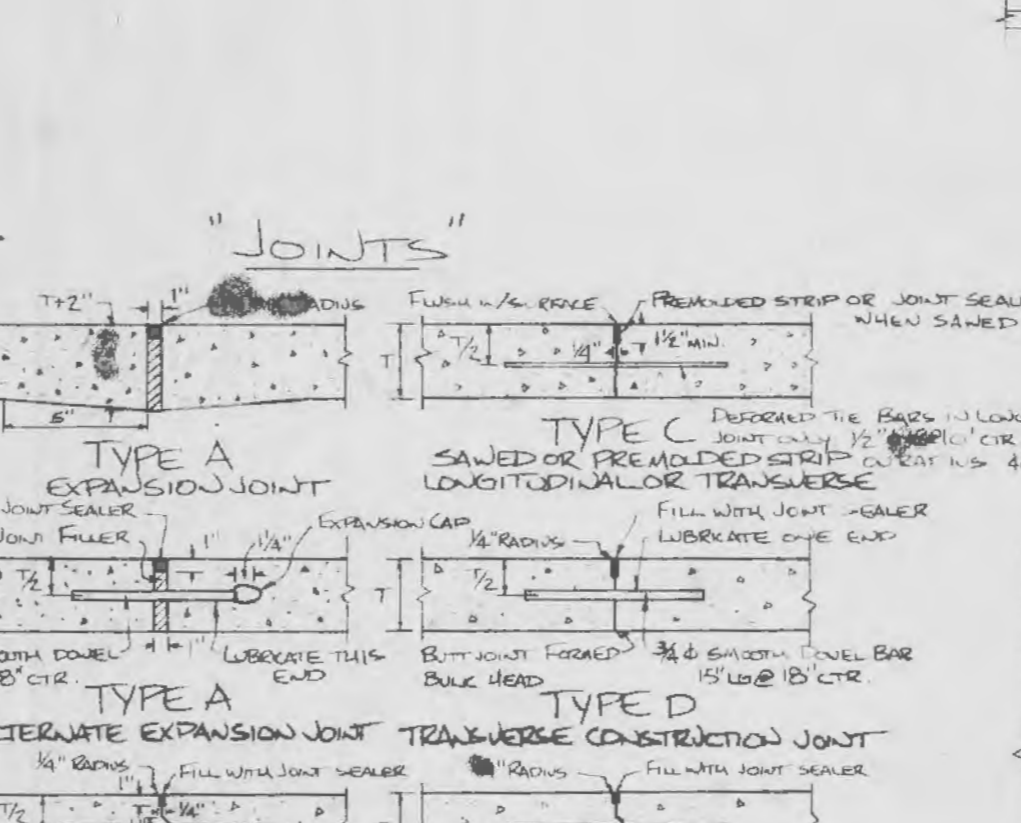
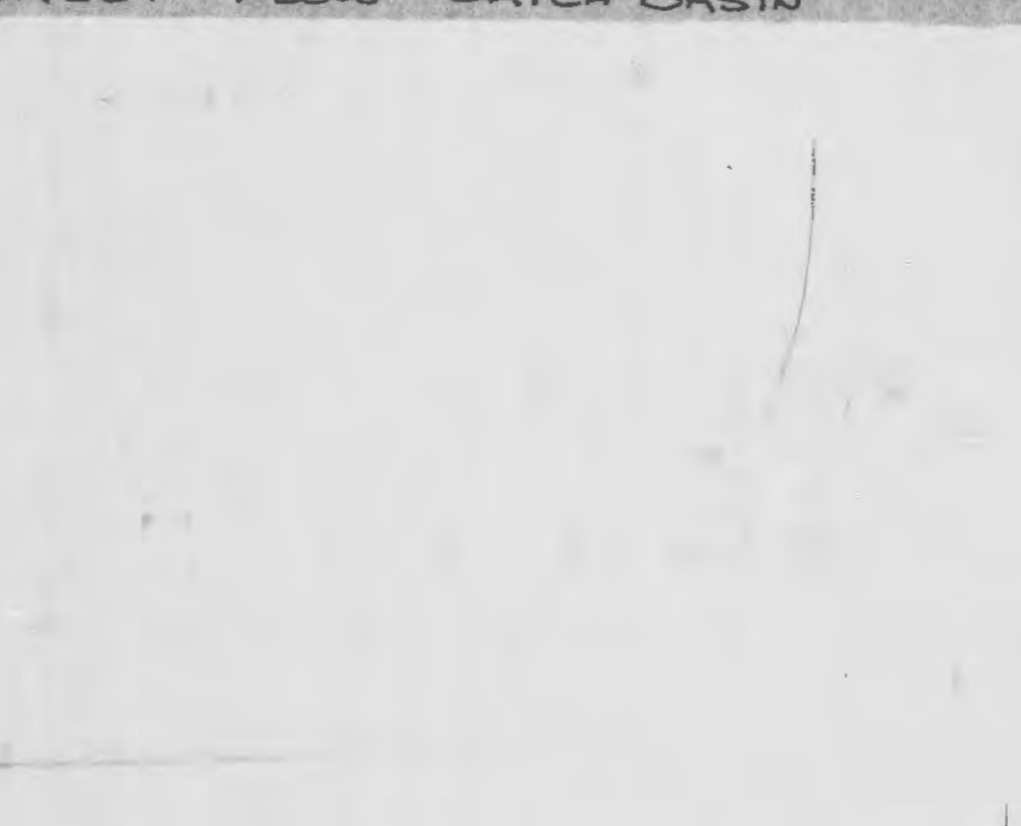
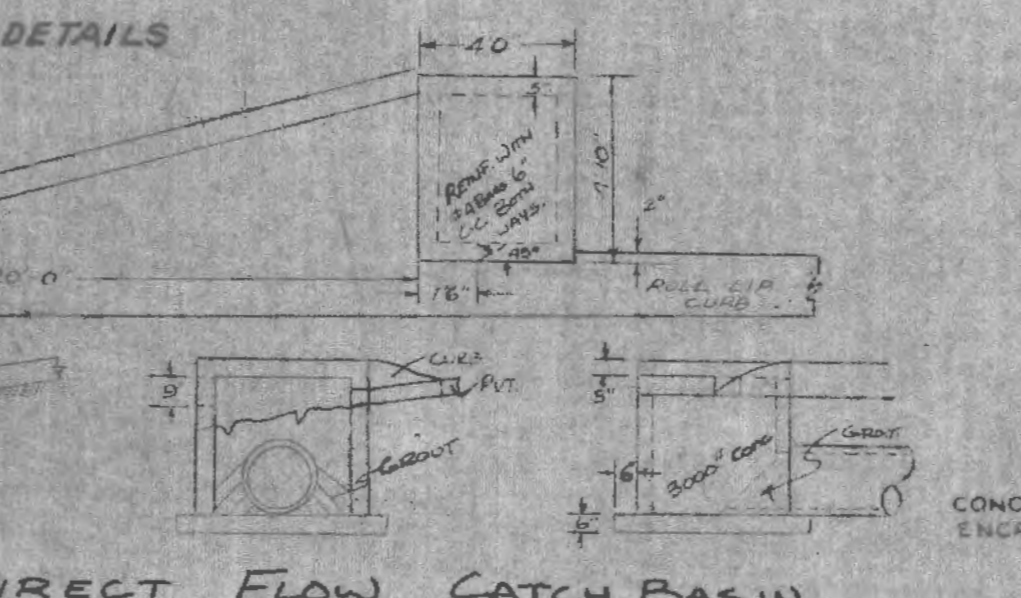
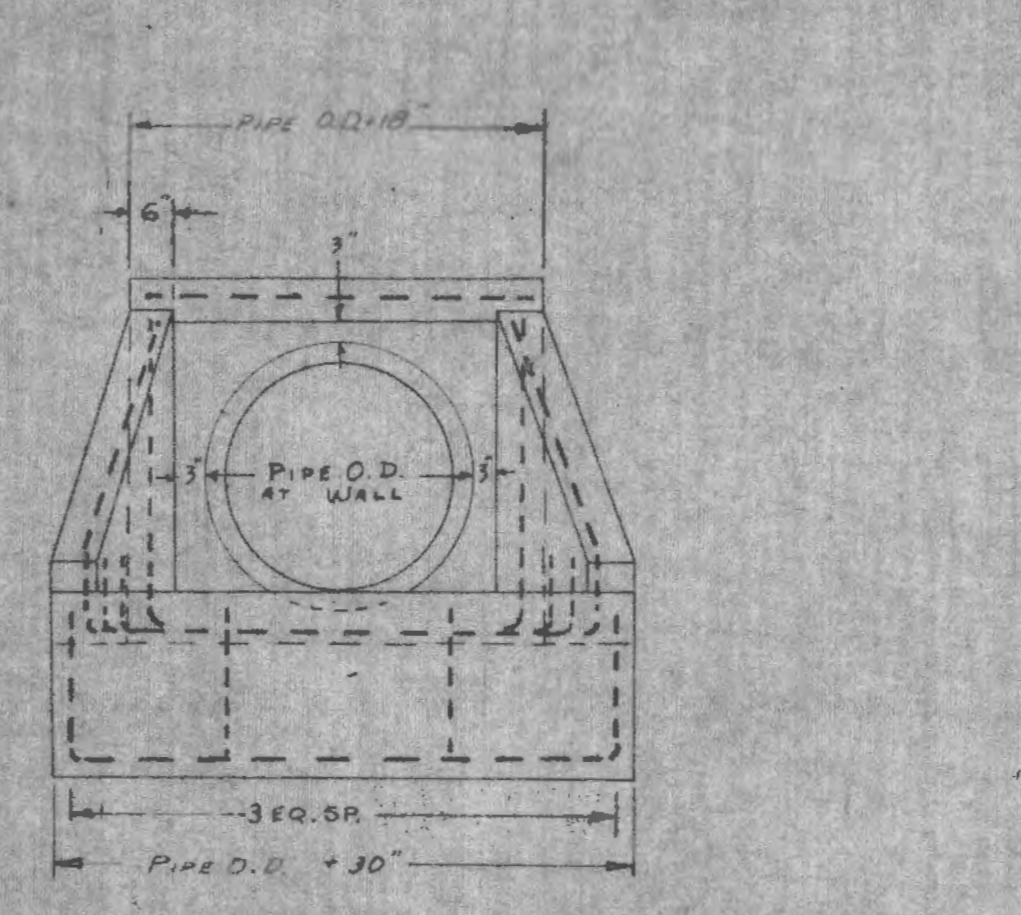
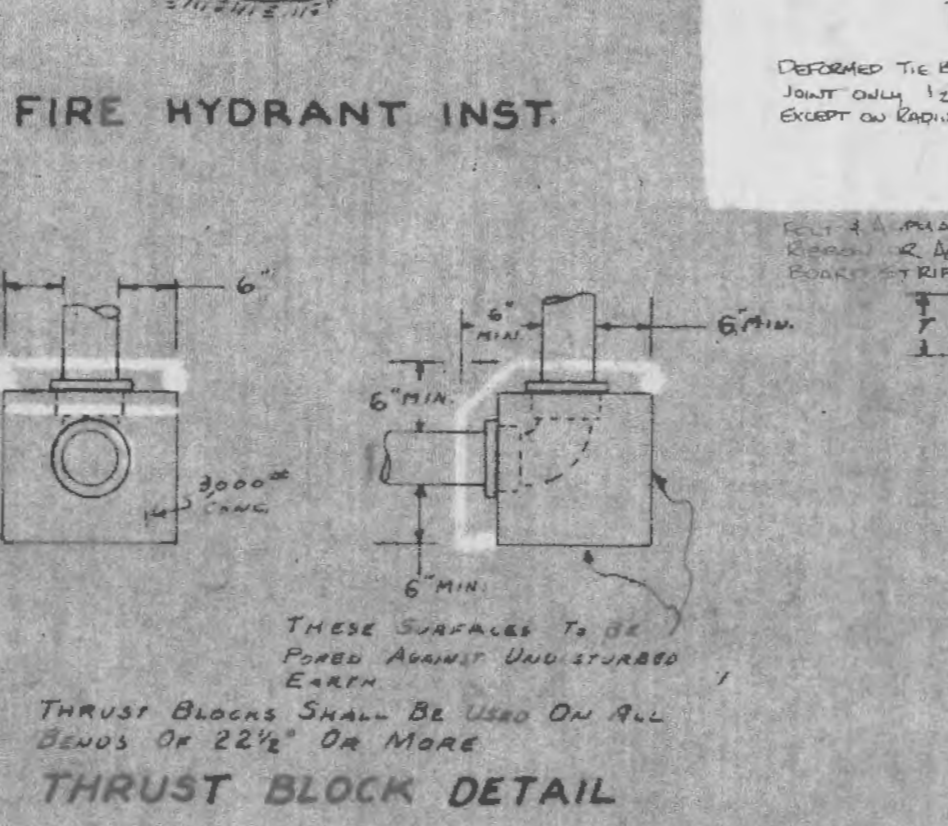
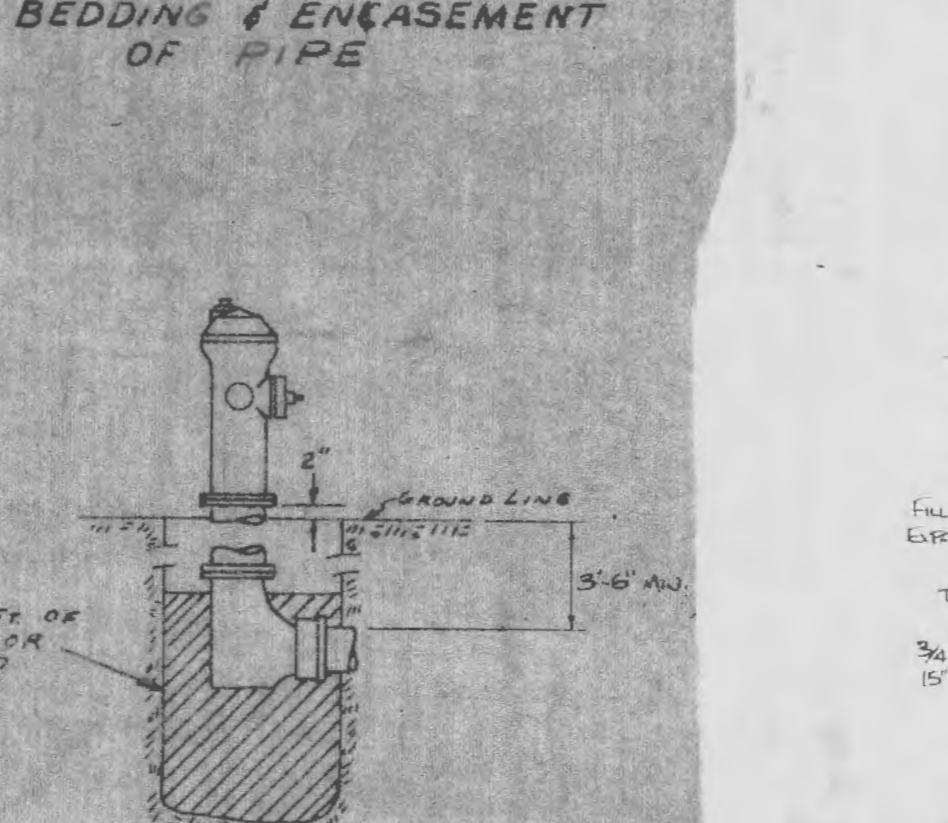
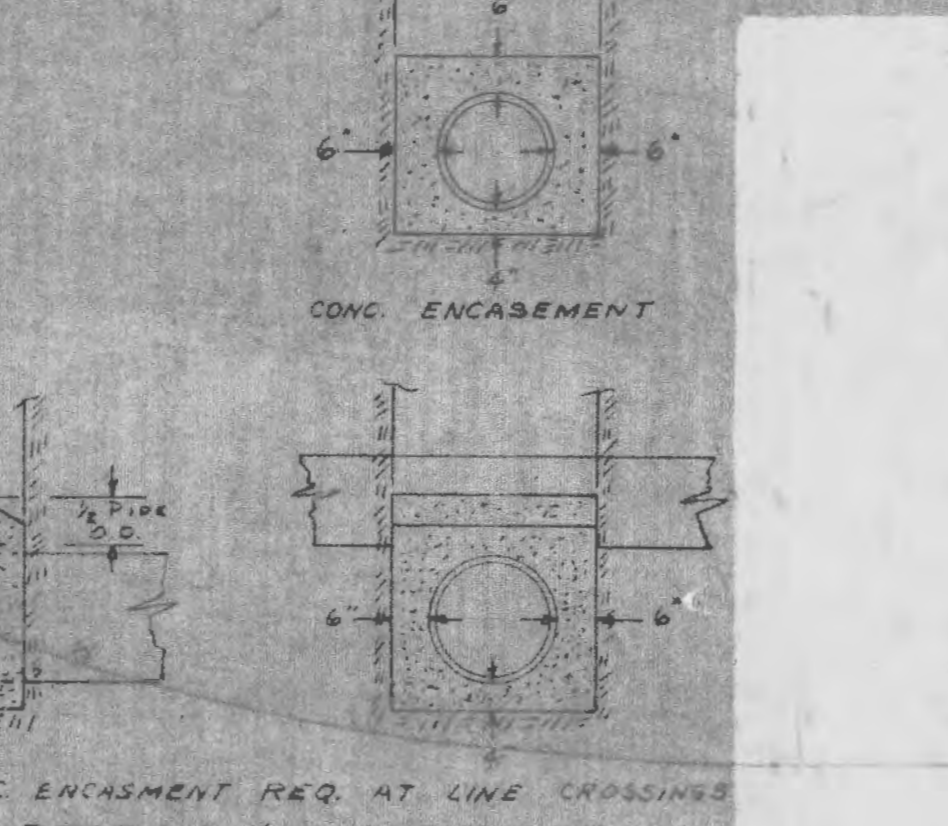
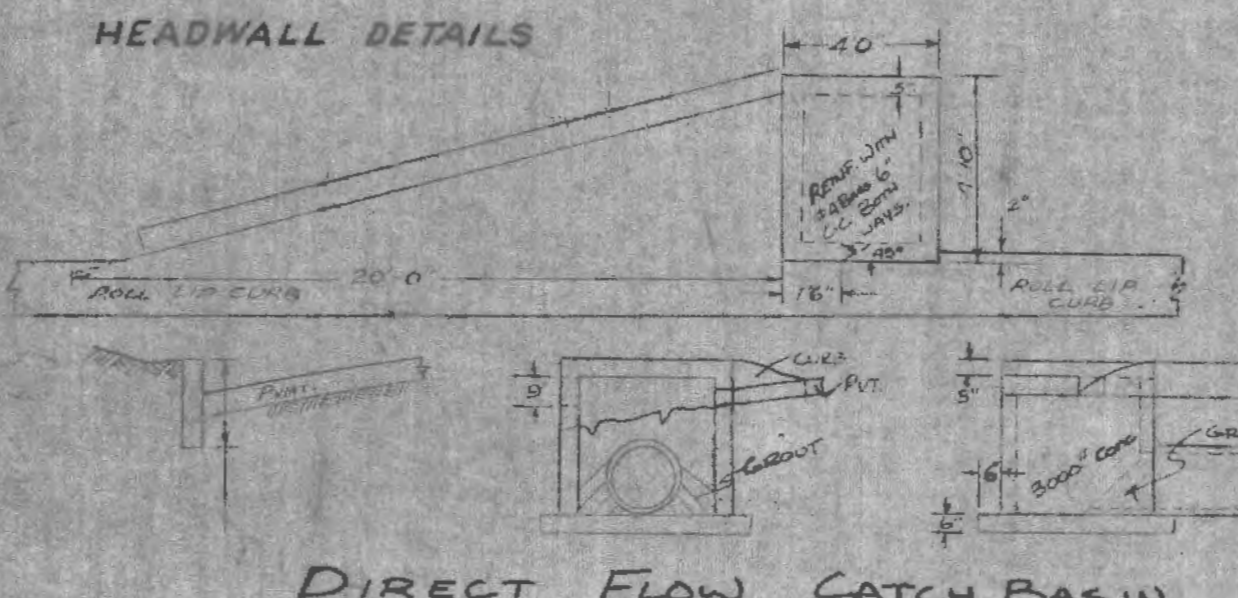
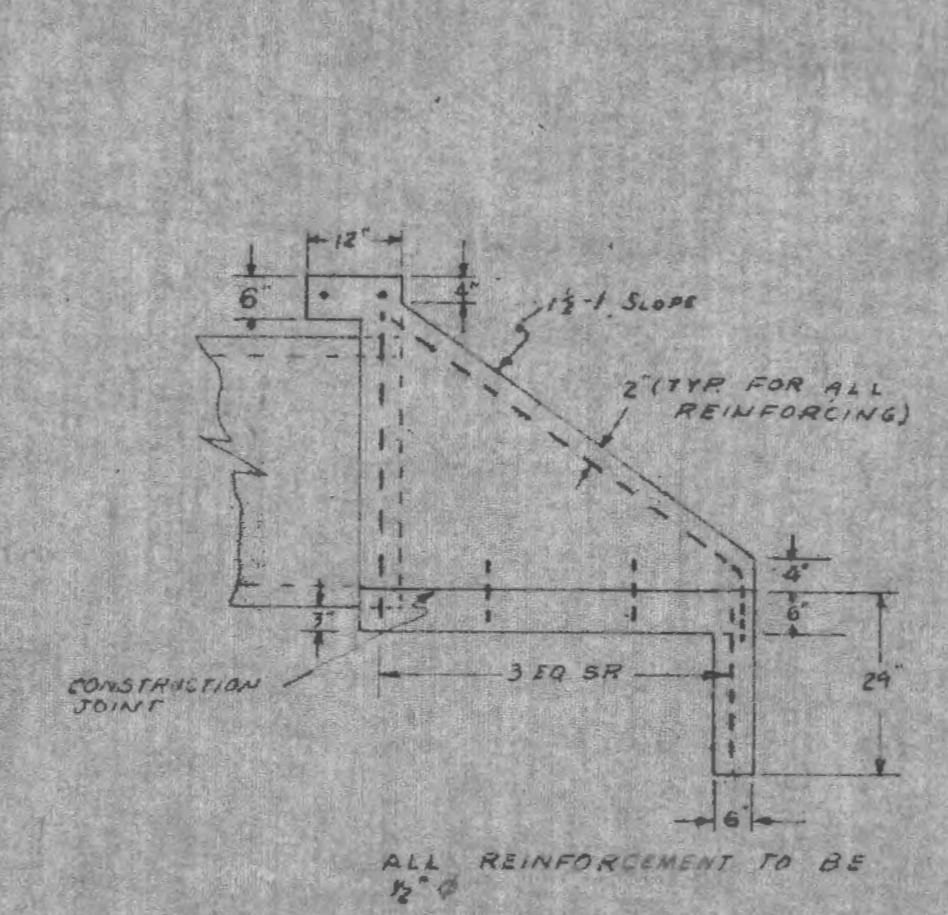


YARD BASINS
 ONLY SILL SUPPORT COVER AT CORNERS WITH
 BRICK ARCH OVER TOP OF PIPE
 TO PROVIDE 1/2" MIN. SAND CEMENT MORTAR
 SURGE APRONS TO DIRECT FLOW INTO BASIN
 1/2" ON 12" CENTERS BOTH WAYS



CATCH BASIN SUMP CONTOURS



NOTE:
 COUNTY AND/OR CITY SPECIFICATIONS & CONFIGURATIONS SHALL SUPERCEDE ANY DATA SHOWN HEREON.

CONSTRUCTION DETAILS

CHARLES W. RUFF P.E.

REVISION	DATE

