

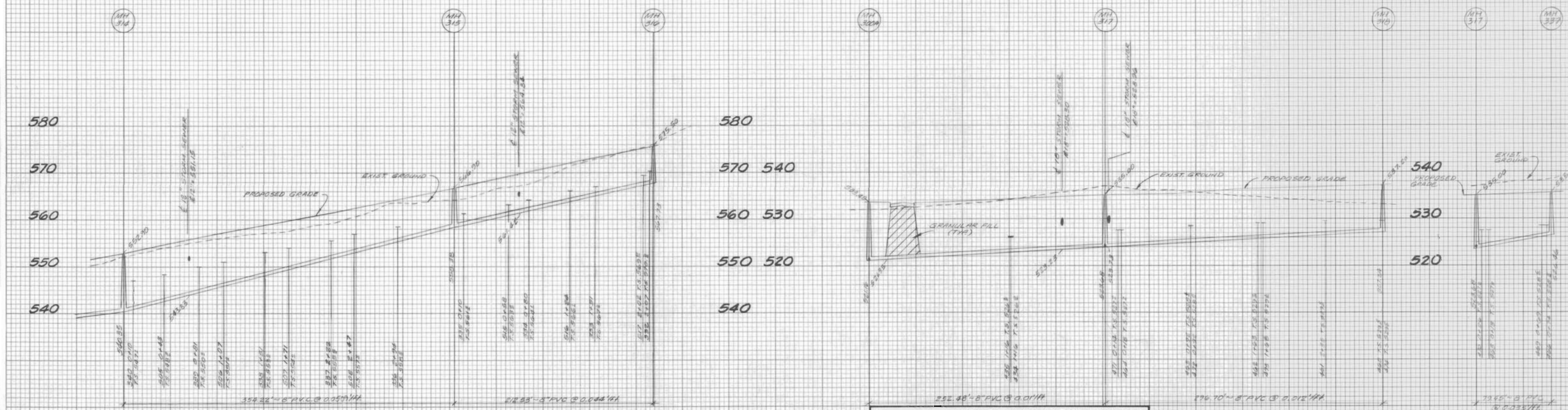
SEWER PROFILES
BAYFIELD

SCALE: 1" = 50' H.
1" = 10' V.

MARCH 15, 1989 85-1200N
REV 5-1-89
REV 5-12-89
REV 5-19-89

FINAL SURVEY PLOTTED
NOTE BOOK TEMPLATE
NO. _____
DATE _____
BY _____
APPROVED _____
DATE _____
BY _____

ORIGINAL SURVEY PLOTTED
NOTE BOOK TEMPLATE
NO. _____
DATE _____
BY _____
APPROVED _____
DATE _____
BY _____



Any sanitary sewer that is placed at any slope less than 0.008'/ft. must have the actual slope verified by the project engineer before placement of any backfill. Any portion that has a slope of less than 0.007'/ft. must be removed and replaced at a minimum slope of 0.007'/ft.