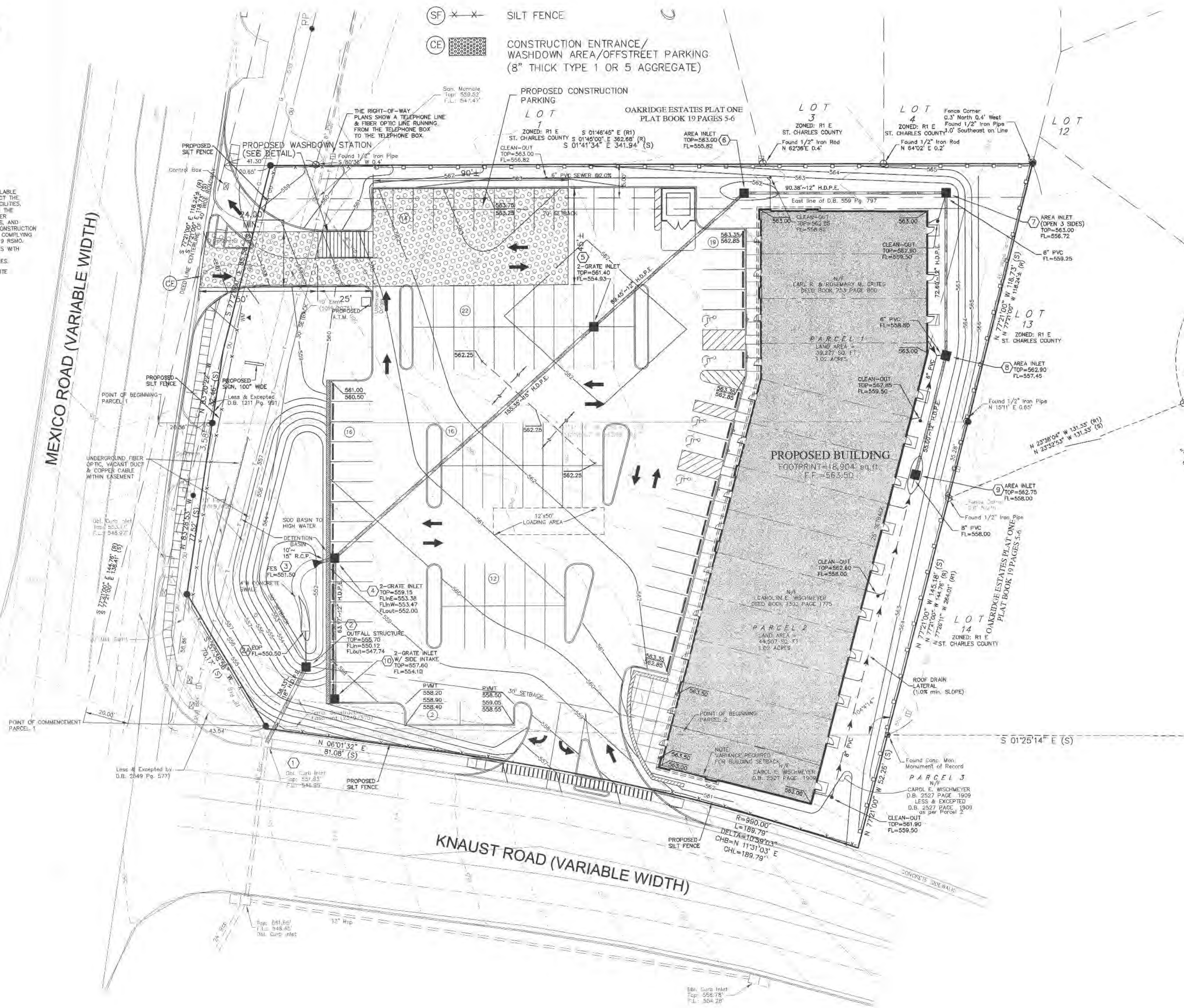


- (SF) SILT FENCE
- (CE) CONSTRUCTION ENTRANCE/
WASHDOWN AREA/OFFSTREET PARKING
(8" THICK TYPE 1 OR 5 AGGREGATE)

GENERAL NOTES

1. UNDERGROUND FACILITIES, STRUCTURES AND UTILITIES HAVE BEEN PLOTTED FROM AVAILABLE SURVEYS, RECORDS AND INFORMATION, AND THEREFORE DO NOT NECESSARILY REFLECT THE ACTUAL EXISTENCE, NON-EXISTENCE, SIZE, TYPE, NUMBER, OR LOCATION OF THESE FACILITIES, STRUCTURES AND UTILITIES. THE CONTRACTOR SHALL BE RESPONSIBLE FOR VERIFYING THE ACTUAL LOCATION OF ALL UNDERGROUND FACILITIES, STRUCTURES, AND UTILITIES, EITHER SHOWN OR NOT SHOWN ON THESE PLANS. THE UNDERGROUND FACILITIES, STRUCTURES, AND UTILITIES SHALL BE LOCATED IN THE FIELD PRIOR TO ANY GRADING, EXCAVATION OR CONSTRUCTION OF IMPROVEMENTS. THESE PROVISIONS SHALL IN NO WAY ABSOLVE ANY PARTY FROM COMPLYING WITH THE UNDERGROUND FACILITY SAFETY AND DAMAGE PREVENTION ACT, CHAPTER 319 RSMO.
2. THE CONTRACTOR SHALL BE RESPONSIBLE FOR COORDINATING CONSTRUCTION ACTIVITIES WITH POTENTIAL CONFLICTS AND/OR DISRUPTION OF SERVICE WITH THE RESPECTIVE UTILITY COMPANIES, FOR SEWER AND UTILITY INSTALLATIONS AND ALL OTHER ON-SITE ACTIVITIES.
3. CONTRACTOR IS RESPONSIBLE FOR SILTATION AND EROSION CONTROL MEASURES ON-SITE UNTIL SITE IS COMPLETELY STABILIZED AND VEGETATION IS WELL ESTABLISHED.

TOTAL AREA DISTURBED = 2.08 ACRES



ISSUE FOR PERMIT
& BIDDING