

BASIS OF BEARING:
DEED BOOK 1302 PAGE 1775
 ● - DENOTES SET 1/2" x 18" REBAR WITH CAP STAMPED "MARLER L.S. -347-D"
 ○ - DENOTES FOUND 1/2" IRON PIPE

GENERAL NOTES

UNDERGROUND FACILITIES, STRUCTURES AND UTILITIES HAVE BEEN PLOTTED FROM AVAILABLE SURVEYS, RECORDS AND INFORMATION, AND THERE DO NOT NECESSARILY REFLECT THE ACTUAL EXISTENCE, NON-EXISTENCE, SIZE, TYPE, NUMBER OR LOCATION OF THESE FACILITIES, STRUCTURES AND UTILITIES. THE CONTRACTOR SHALL BE RESPONSIBLE FOR VERIFYING THE ACTUAL LOCATION OF ALL UNDERGROUND FACILITIES, STRUCTURES, AND UTILITIES, EITHER SHOWN OR NOT SHOWN ON THESE PLANS. THE UNDERGROUND FACILITIES, STRUCTURES, AND UTILITIES SHALL BE LOCATED IN THE FIELD PRIOR TO ANY GRADING, EXCAVATION OR CONSTRUCTION IMPROVEMENTS. THESE PROVISIONS SHALL IN NO WAY ABSOLVE ANY PARTY FROM COMPLYING WITH THE UNDERGROUND FACILITY SAFETY AND DAMAGE PREVENTION ACT, CHAPTER 319 RSMO.

THE CONTRACTOR SHALL BE RESPONSIBLE FOR COORDINATING CONSTRUCTION ACTIVITIES WITH UTILITY COMPANIES TO AVOID THE CONDITION WHERE NEW PAVEMENT IS SAWCUT OR REMOVED FOR CONSTRUCTION PURPOSES, AND SHALL COORDINATE WITH THE CITY OF ST. PETERS AS NECESSARY.

THE CONTRACTOR IS RESPONSIBLE FOR COORDINATING CONSTRUCTION PARKING WITH THE CITY OF ST. PETERS.

THE CONTRACTOR IS RESPONSIBLE FOR ANY TRAFFIC CONTROL AND/OR LANE CLOSURES REQUIRED DURING THE CONSTRUCTION PROCESS, AND SHALL COORDINATE WITH THE CITY OF ST. PETERS AS NECESSARY.

THE CONTRACTOR SHALL VERIFY EXISTING UTILITY SERVICES ARE CAPPED OR REMOVED AND/OR ABANDONED AS REQUIRED PER THE SPECIFICATIONS OF THE APPROPRIATE GOVERNING AGENCY.

PROVIDE PROTECTIONS NECESSARY TO PREVENT DAMAGE TO EXISTING IMPROVEMENTS AND UTILITIES LOCATED TO REMAIN IN PLACE.

PROTECT IMPROVEMENTS ON ADJOINING PROPERTIES AND ON OWNER'S PROPERTY.

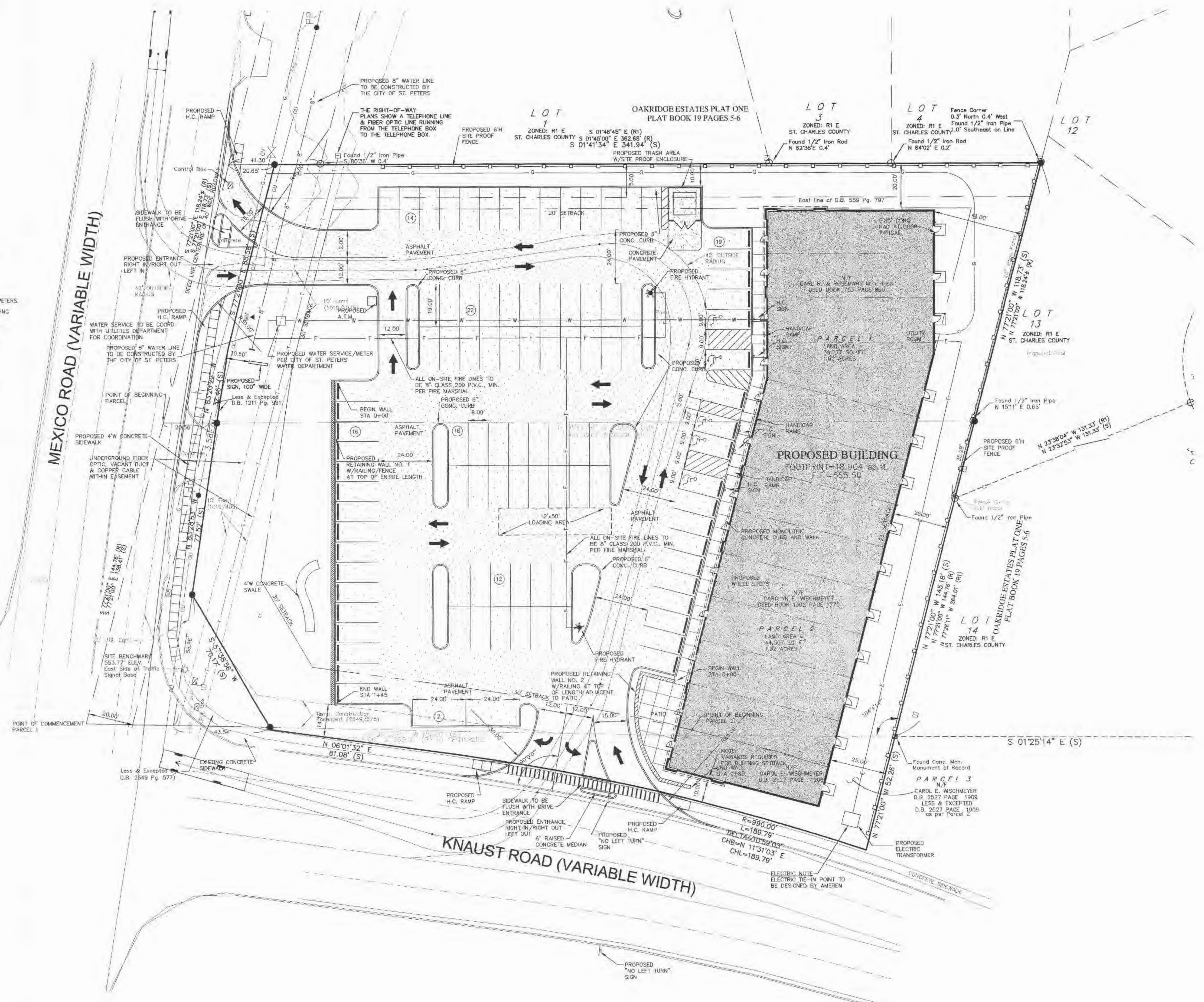
RESTORE DAMAGED IMPROVEMENTS TO THEIR ORIGINAL CONDITION AND GRADES, AS ACCEPTABLE TO PROPERTY OWNERS.

CONTRACTOR SHALL COORDINATE ALL PAVEMENT/HARDSCAPE INSTALLATION WITH PROPOSED UTILITY INSTALLATIONS TO AVOID THE CONDITION WHERE NEW PAVEMENT IS SAWCUT OR REMOVED FOR REQUIRED UTILITY INSTALL. CONDUIT LOCATIONS AND UTILITY SERVICES SHALL BE REVIEWED BY CONTRACTOR, PRIOR TO PAVEMENT/HARDSCAPE INSTALLATIONS.

THE LIGHTING DESIGN SHALL BE BY OTHERS. LIGHTING SHOWN FOR CONCEPT ONLY AND IS SUBJECT TO DESIGN AND CITY ORDINANCE REQUIREMENTS.

LEGEND FOR NEW PAVEMENT

- 6" NON-REINFORCED CONCRETE PAVEMENT ON 4" TYPE 1 AGGREGATE BASE (TRASH ENCLOSURE PAD)
- 3" ASPHALT PAVEMENT ON 8" TYPE 1 AGGREGATE BASE (HEAVY DUTY)
- 3" ASPHALT PAVEMENT ON 10" TYPE 1 AGGREGATE BASE (LIGHT DUTY)



ISSUE FOR PERMIT & BIDDING