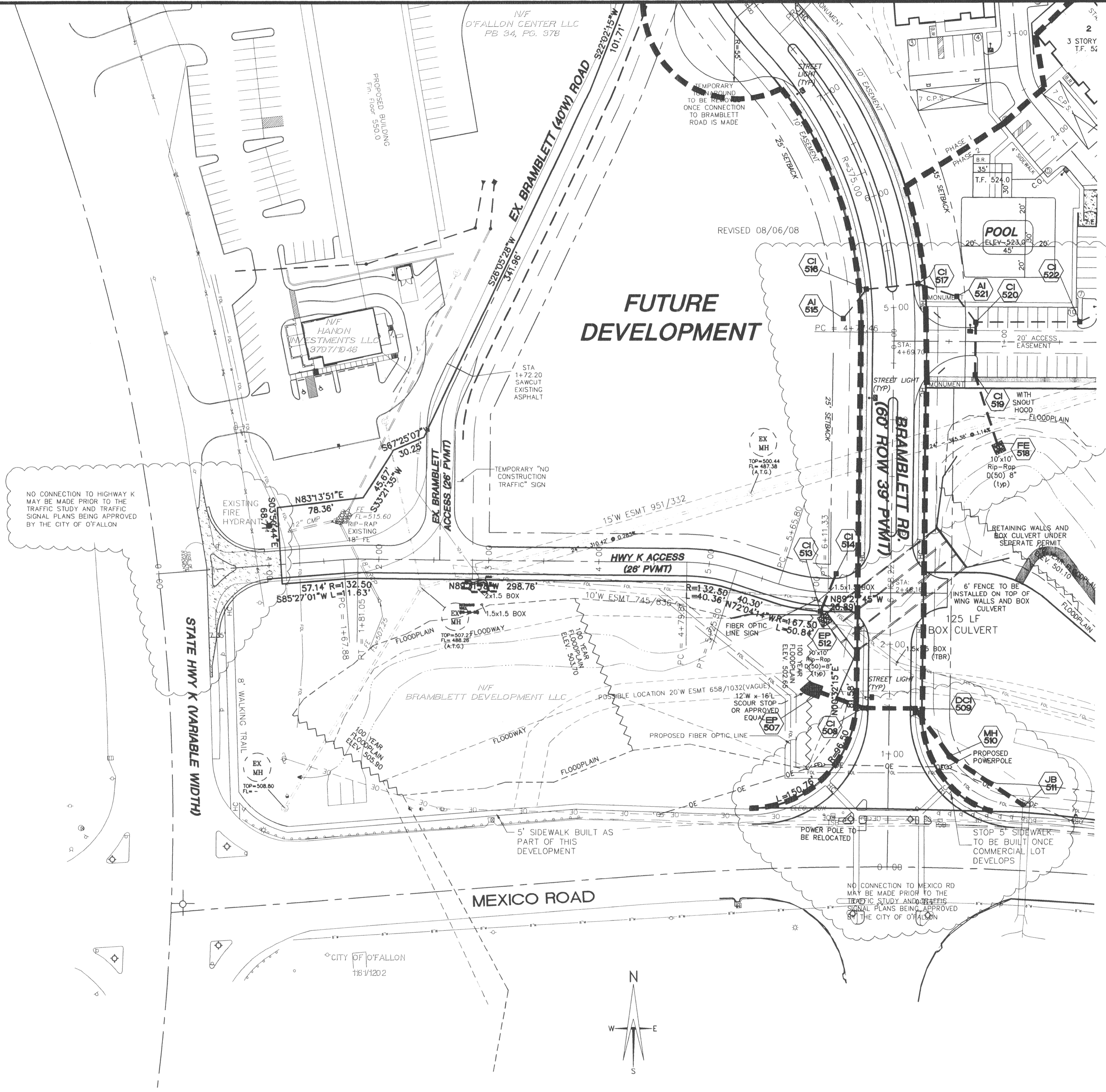


THE UNDERGROUND UTILITIES SHOWN HEREIN WERE PLOTTED FROM AVAILABLE INFORMATION AND DO NOT NECESSARILY REFLECT THE ACTUAL EXISTENCE OR NONEXISTENCE, SIZE, TYPE, NUMBER OR LOCATION OF THESE OR OTHER UTILITIES. THE GENERAL CONTRACTOR SHALL BE RESPONSIBLE FOR VERIFYING THE ACTUAL LOCATION OF ALL UNDERGROUND UTILITIES, SHOWN OR NOT SHOWN, AND SAID UTILITIES SHALL BE LOCATED IN THE FIELD PRIOR TO ANY GRADING, EXCAVATION OR CONSTRUCTION OF IMPROVEMENTS. THESE PROVISIONS SHALL IN NO WAY ABSOLVE ANY PARTY FROM COMPLYING WITH THE UNDERGROUND FACILITY SAFETY AND DAMAGE PREVENTION ACT, CHAPTER 319, RSMO.

NO CONNECTION TO HIGHWAY K MAY BE MADE PRIOR TO THE TRAFFIC STUDY AND TRAFFIC SIGNAL PLANS BEING APPROVED BY THE CITY OF O'FALLON

NO CONNECTION TO MEXICO RD MAY BE MADE PRIOR TO THE TRAFFIC STUDY AND TRAFFIC SIGNAL PLANS BEING APPROVED BY THE CITY OF O'FALLON



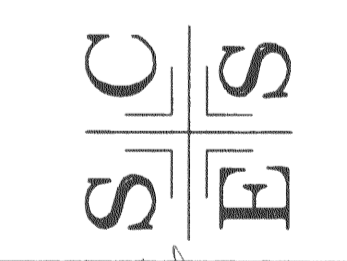
REVISED 08/06/08

FUTURE DEVELOPMENT

01/18/08	REVISED BID SET
02/18/08	REVISED PER CITY COMMENTS
08/06/08	REVISED STORM SEWERS
09/25/08	REVISED PHASE PLAN
10/02/08	REVISED PHASE PLAN

BELLEAU CROSSING FLAT PLAN

ST. CHARLES ENGINEERING & SURVEYING, INC.
 801 S. FIFTH STREET, SUITE 202
 ST. CHARLES, MO 68301
 TEL: (636) 947-0607 FAX: (636) 947-2448



ORDER NO. 04-1419-01
DATE

C-4

O'FALLON P+Z NO. 3805.05
 APPROVED AUGUST 16, 2007
 t:\041419\dwg\041419.dwg 03/05/09-10:01am