

THE UNDERGROUND UTILITIES SHOWN HEREIN WERE PLOTTED FROM AVAILABLE INFORMATION AND DO NOT NECESSARILY REFLECT THE ACTUAL EXISTENCE OR NONEXISTENCE, SIZE, TYPE, NUMBER OR LOCATION OF THESE OR OTHER UTILITIES. THE GENERAL CONTRACTOR SHALL BE RESPONSIBLE FOR VERIFYING THE ACTUAL LOCATION OF ALL UNDERGROUND UTILITIES, SHOWN OR NOT SHOWN, AND SAID UTILITIES SHALL BE LOCATED IN THE FIELD PRIOR TO ANY GRADING, EXCAVATION OR CONSTRUCTION OF IMPROVEMENTS. THESE PROVISIONS SHALL IN NO WAY ABSOLVE ANY PARTY FROM COMPLYING WITH THE UNDERGROUND FACILITY SAFETY AND DAMAGE PREVENTION ACT, CHAPTER 319, RSMO.

T-TOP OF WALL  
B-BOTTOM OF WALL

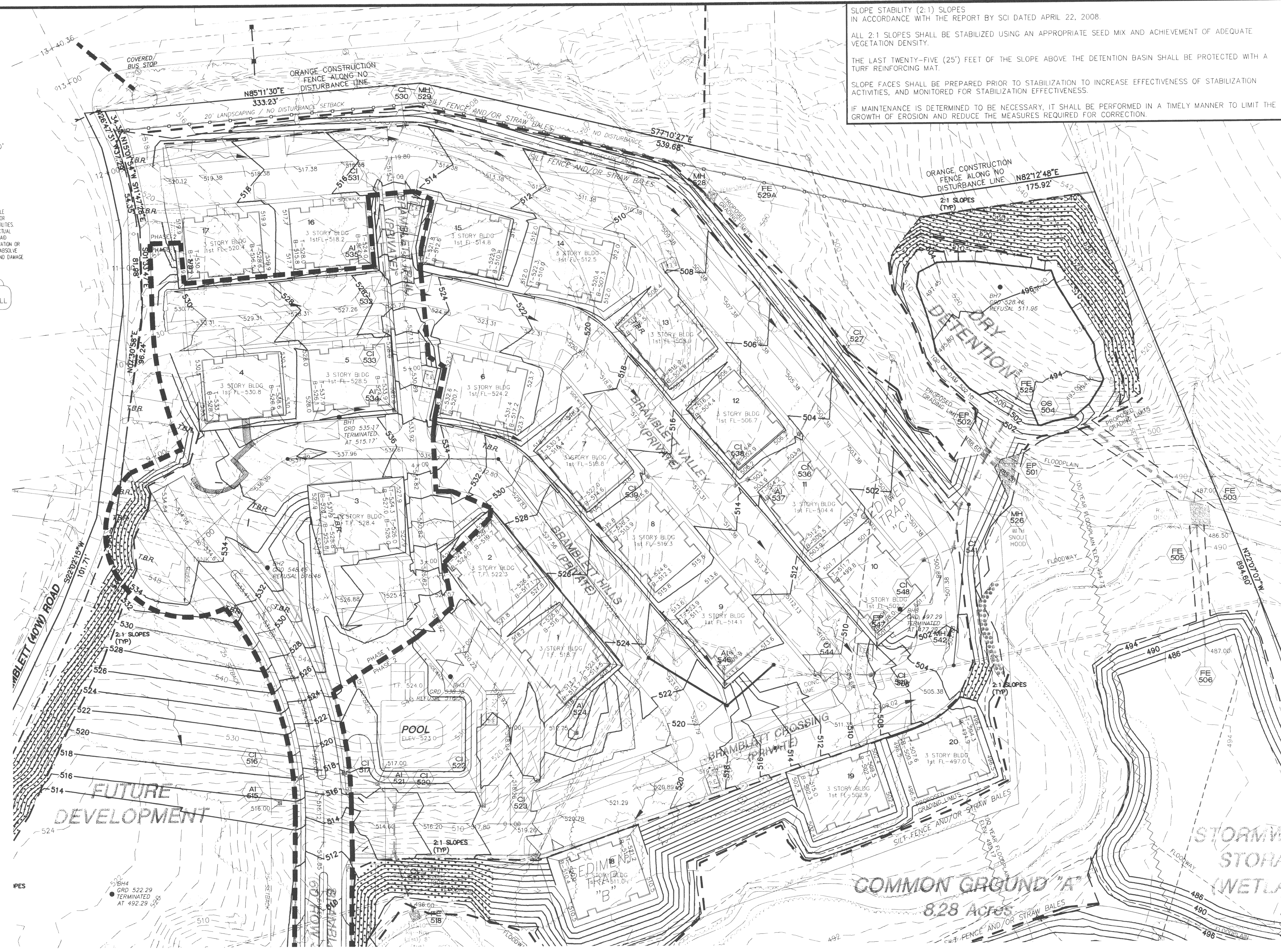
SLOPE STABILITY (2:1) SLOPES IN ACCORDANCE WITH THE REPORT BY SCI DATED APRIL 22, 2008.

ALL 2:1 SLOPES SHALL BE STABILIZED USING AN APPROPRIATE SEED MIX AND ACHIEVEMENT OF ADEQUATE VEGETATION DENSITY.

THE LAST TWENTY-FIVE (25') FEET OF THE SLOPE ABOVE THE DETENTION BASIN SHALL BE PROTECTED WITH A TURF REINFORCING MAT.

SLOPE FACES SHALL BE PREPARED PRIOR TO STABILIZATION TO INCREASE EFFECTIVENESS OF STABILIZATION ACTIVITIES, AND MONITORED FOR STABILIZATION EFFECTIVENESS.

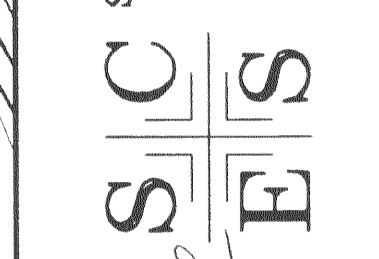
IF MAINTENANCE IS DETERMINED TO BE NECESSARY, IT SHALL BE PERFORMED IN A TIMELY MANNER TO LIMIT THE GROWTH OF EROSION AND REDUCE THE MEASURES REQUIRED FOR CORRECTION.



REVISION	DATE	BY	DESCRIPTION
02/18/08			REVISED PER CITY COMMENTS
05/28/08			REVISED PER CITY COMMENTS
08/06/08			REVISED STORM SEWERS
09/25/08			REVISED PHASE PLAN
10/02/08			REVISED PHASE PLAN

# BELLEAU CROSSING GRADING

ST. CHARLES ENGINEERING & SURVEYING, INC.  
 801 S. FIFTH STREET, SUITE 202  
 ST. CHARLES, MO 63301  
 TEL: (636) 947-0607 FAX: (636) 947-2448



10-2-08  
 ORDER NO. 04-1419-01  
 DATE