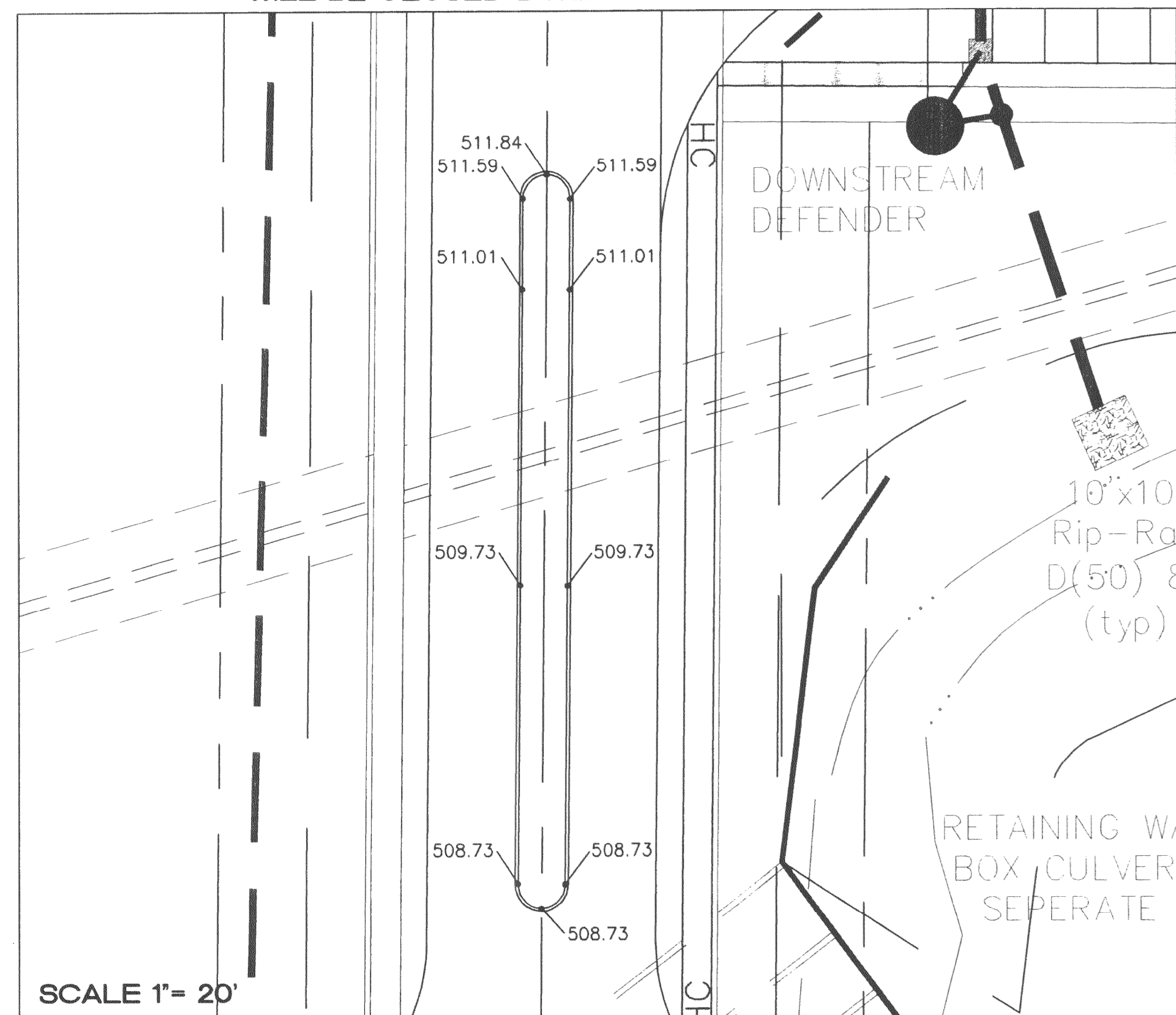
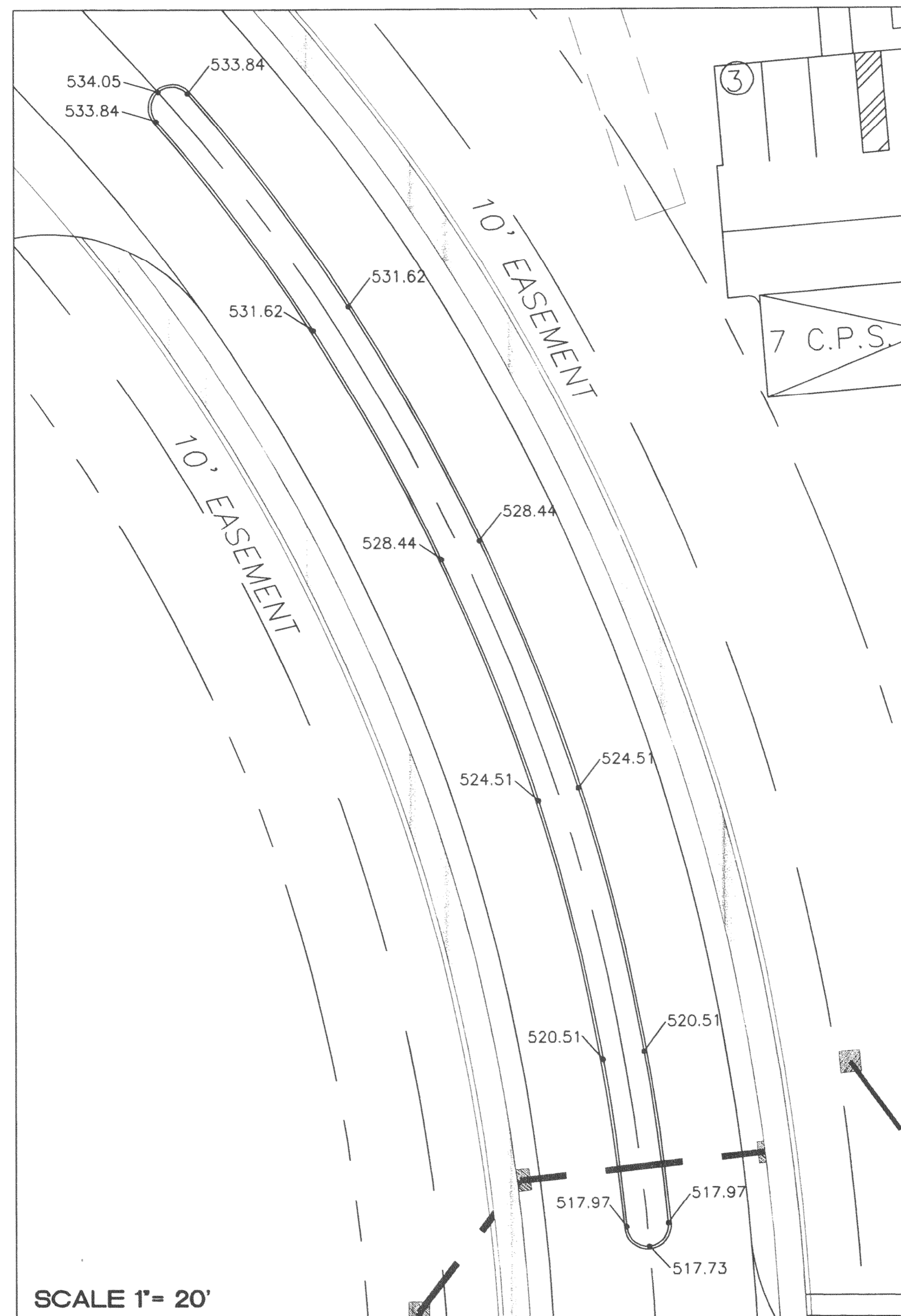
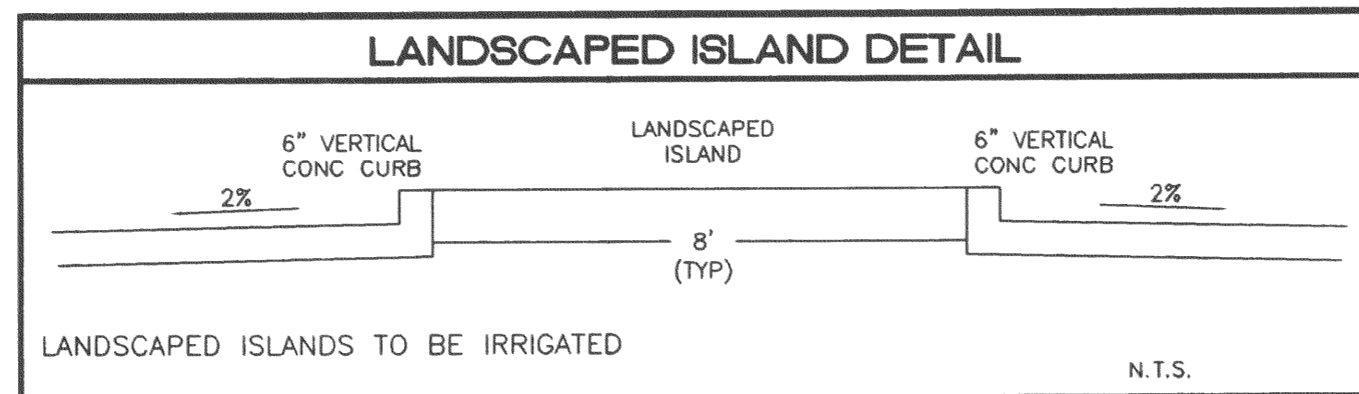
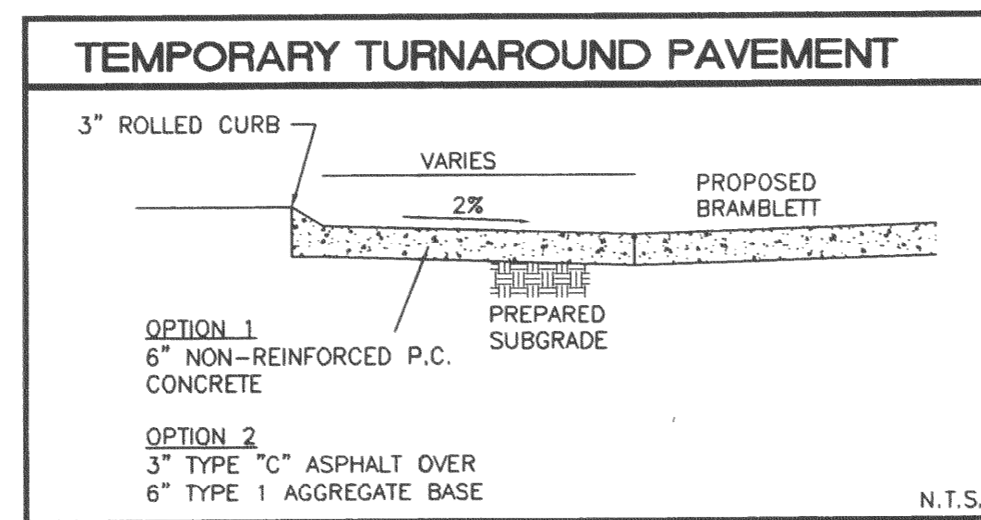
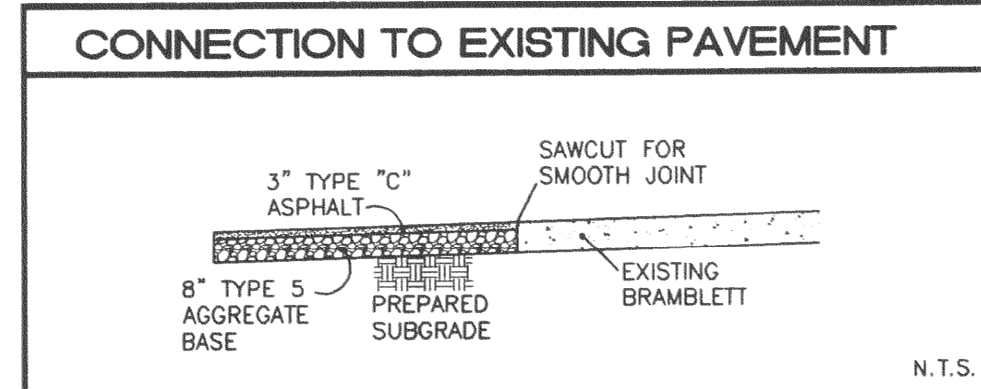


SCALE 1" = 20'

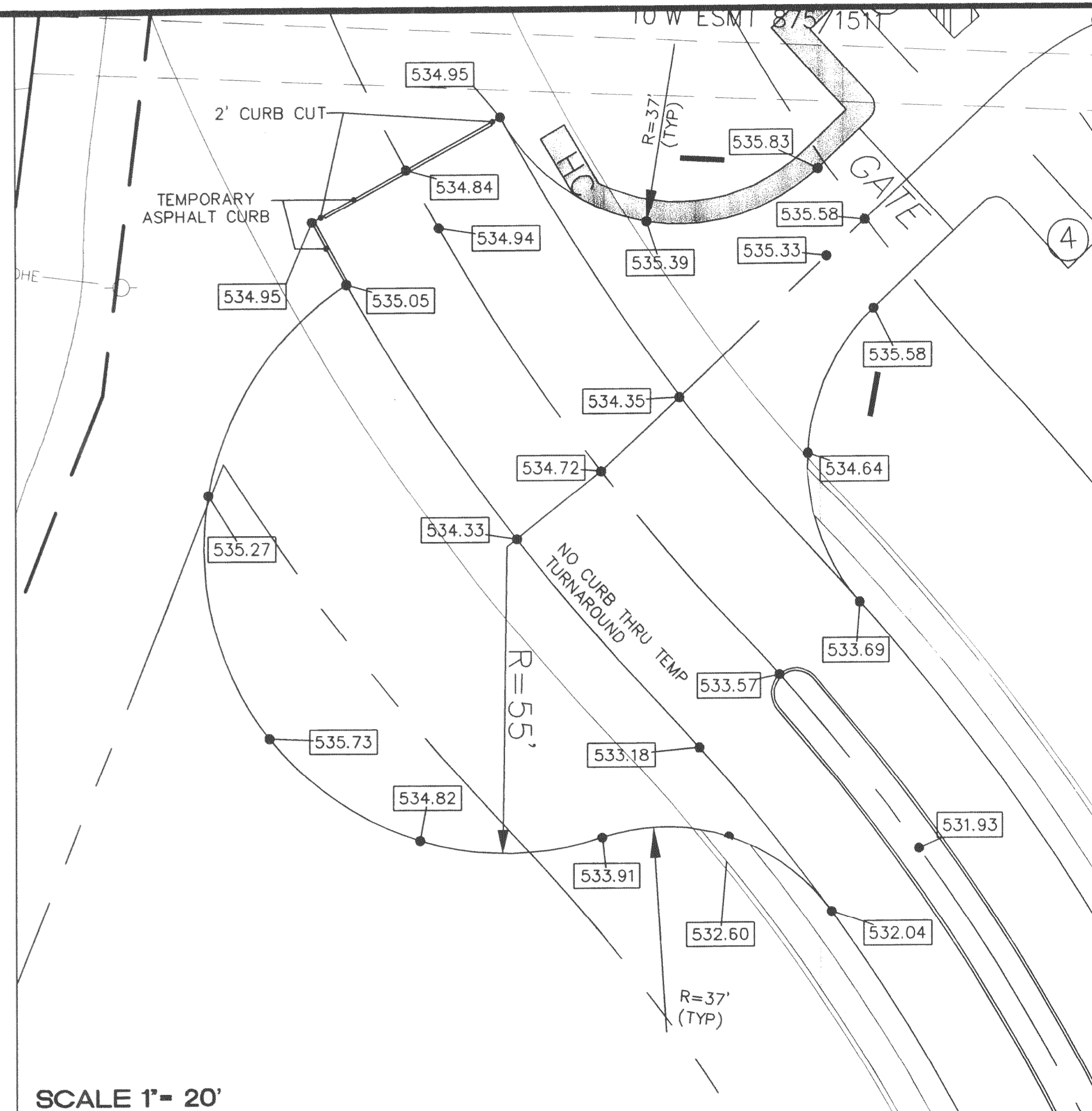
BRAMBLETT ROAD SOUTH CONNECTION TO HWY K  
WILL BE CLOSED DURING PAVEMENT CONSTRUCTION



SCALE 1" = 20'

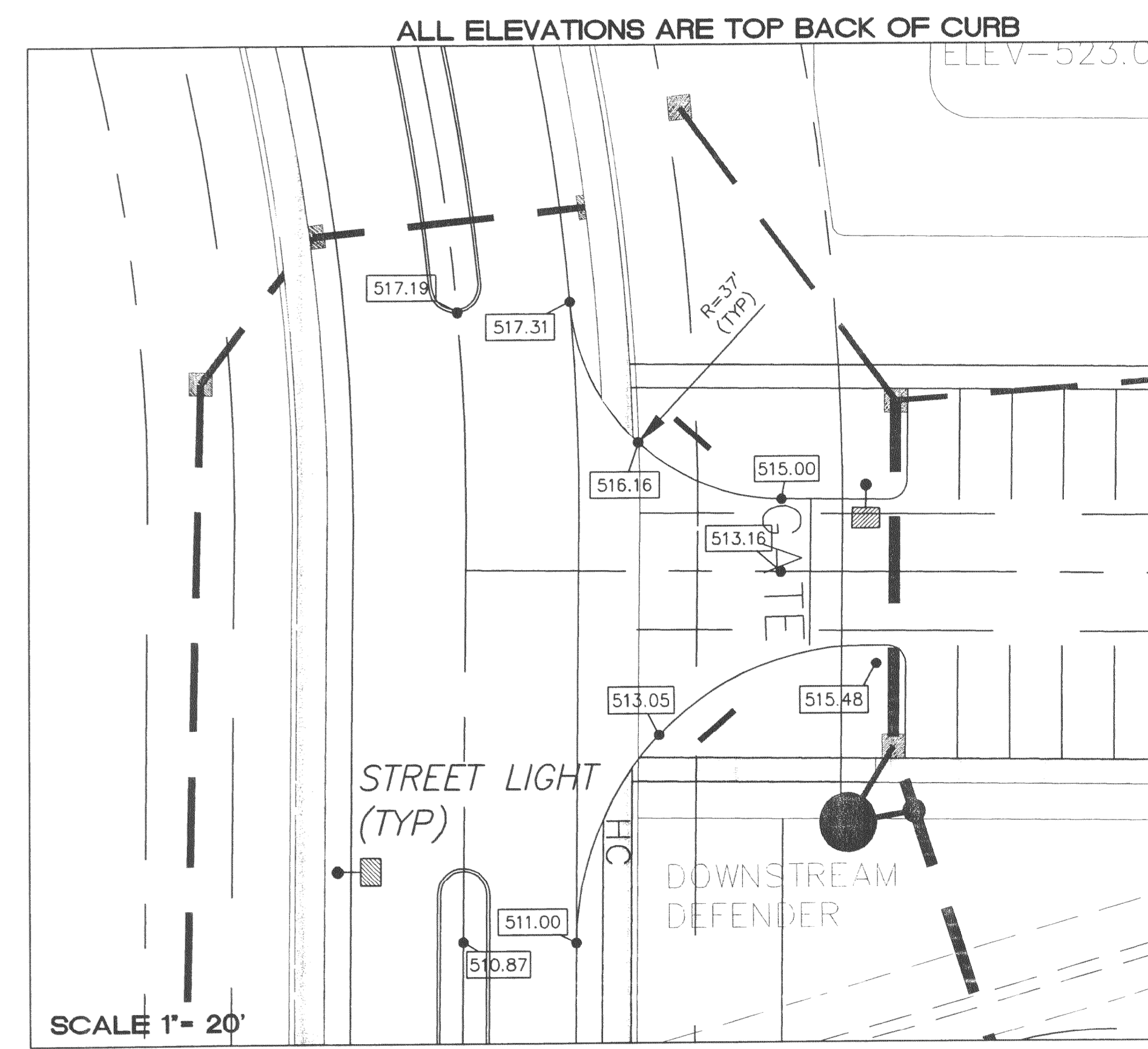


SCALE 1" = 20'



SCALE 1" = 20'

PROPOSED BRAMBLETT AND BRAMBLETT HILLS



SCALE 1" = 20'

PROPOSED BRAMBLETT AND BRAMBLETT CROSSING

O'FALLON P+Z NO. 3805.05  
APPROVED AUGUST 16, 2007  
I:\041419\dwg\041419.dwg 05/01/08-2:41pm

02/18/08	REVISED PER CITY COMMENTS
02/28/08	REVISED PER CITY MEETING

**BRAMBLETT  
CROSSING  
WARPINGS**

ST. CHARLES ENGINEERING & SURVEYING, INC.  
801 S. FIFTH STREET, SUITE 202  
ST. CHARLES, MO. 63301  
TEL: (636) 947-0607 FAX: (636) 947-2448

**S E S**

KARL ANTHONY SCHUBERT  
REGISTERED PROFESSIONAL ENGINEER  
PE-2003915039

5-208

ORDER NO.	04-1419-01
DATE	
C-13	