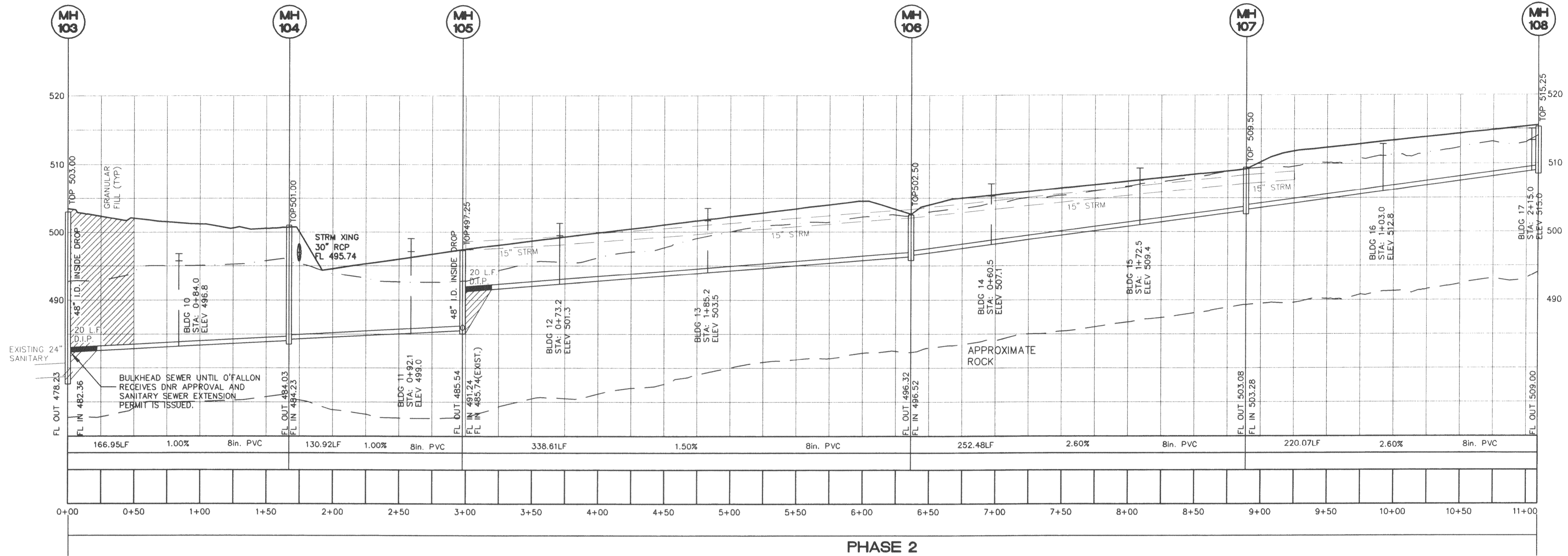
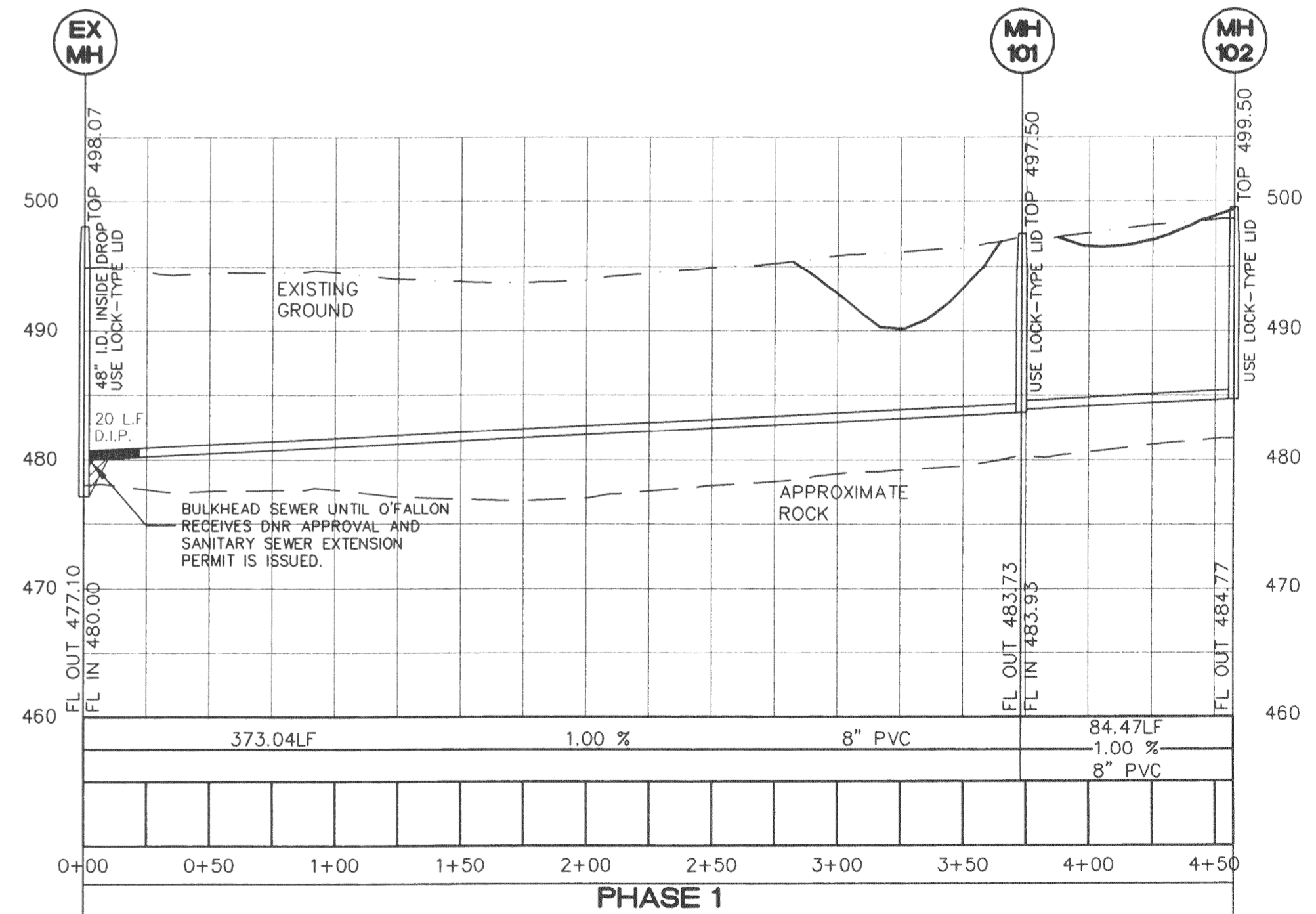
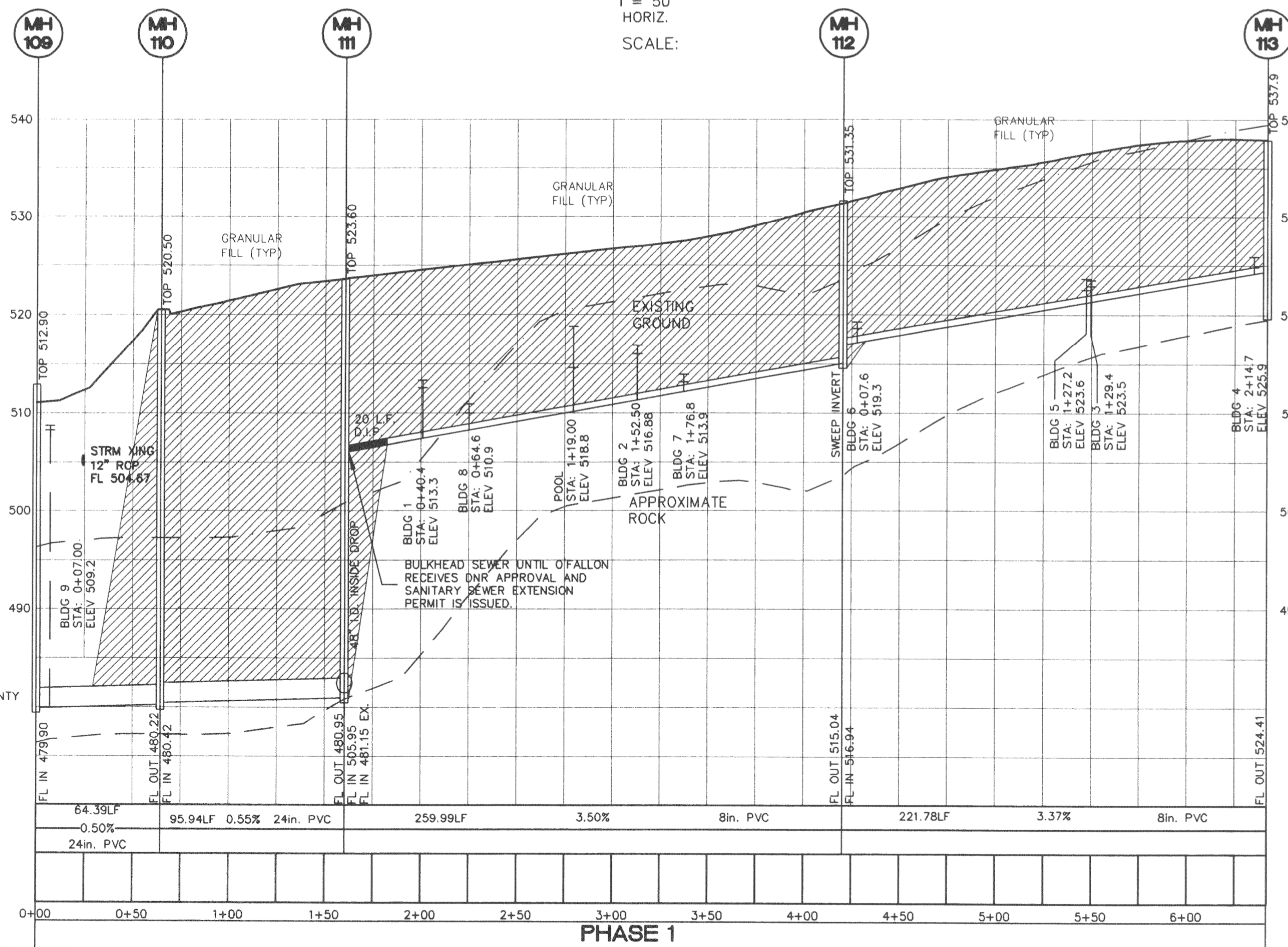


**SANITARY NOTES:**

1. A minimum of 6" diameter pipe shall be used for sanitary laterals.
2. A minimum of 8" diameter pipe shall be used for sanitary sewers.
3. Sewer grease traps and cleanouts required on sanitary laterals as shown.
4. Inside drop manholes must be a minimum of 48" in diameter.
5. Sanitary sewer line placement shall be a minimum of 10' from any proposed structures.
6. All manholes are to have a minimum 0.20' drop across the structure.
7. For drop structures, compacted rock backfill is required in the disturbed ground around the structure.
8. A concrete cradle for RCP and encasement for HDPE will be required for all storm sewer lines when crossing less than 18" above the sanitary lines.



VERT. 1" = 10'  
 1" = 50' HORIZ.  
 SCALE:

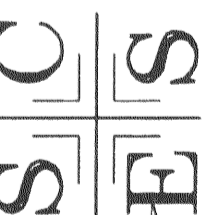


SANITARY SEWERS OVER TWENTY (20) FEET DEEP ARE TO BE SCHEDULE 25 PVC OR HEAVY DUTY PVC.

REVISED BID SET  
 01/18/08  
 REVISED PER CITY COMMENTS  
 02/18/08

**BELLEAU  
 CROSSING  
 SANITARY**

ST. CHARLES ENGINEERING & SURVEYING, INC.  
 801 S. FIFTH STREET, SUITE 202  
 ST. CHARLES, MO 63301  
 TEL: (636) 947-0607 FAX: (636) 947-2448



6-20-08

ORDER NO.  
 04-1419-01  
 DATE

C-14