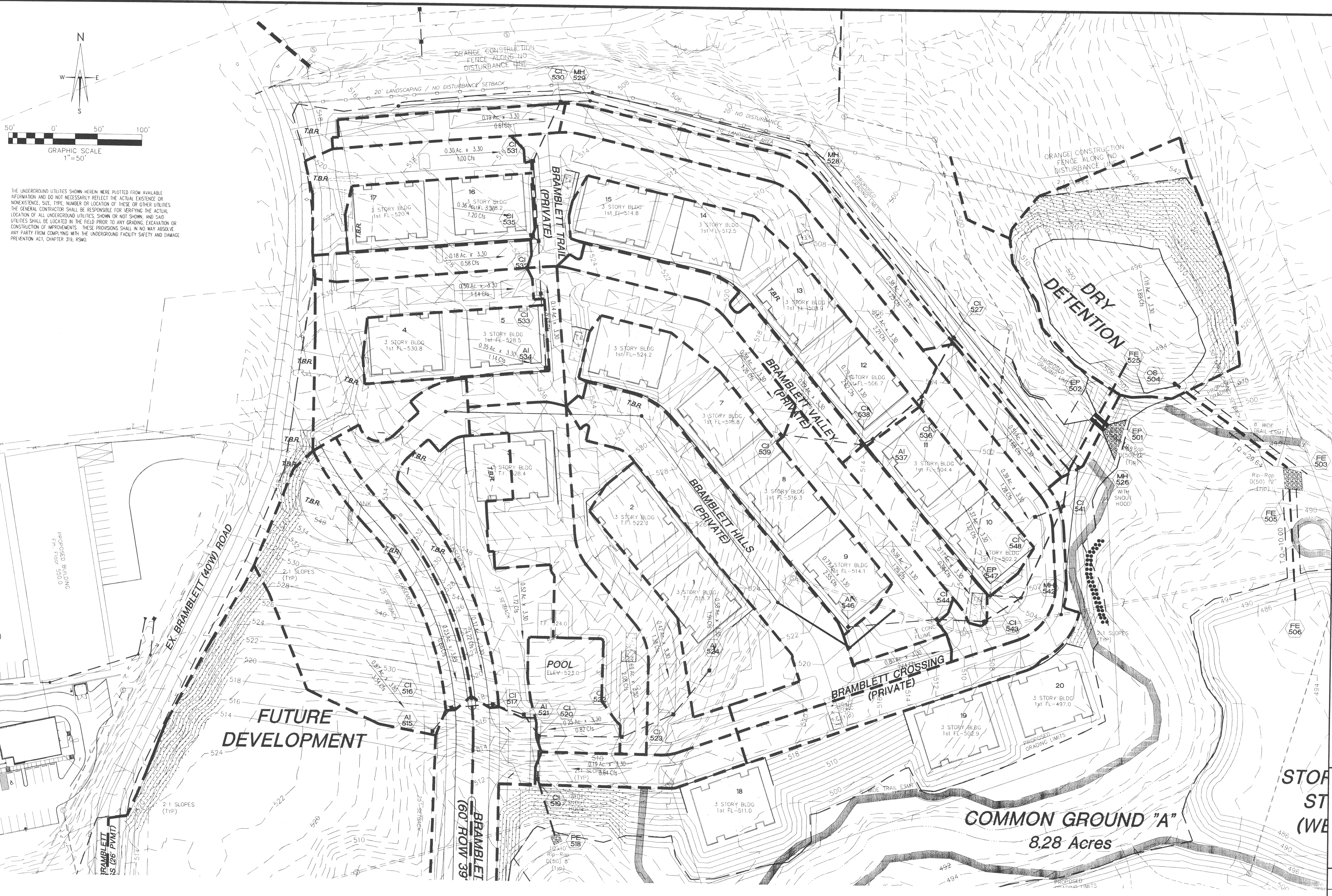


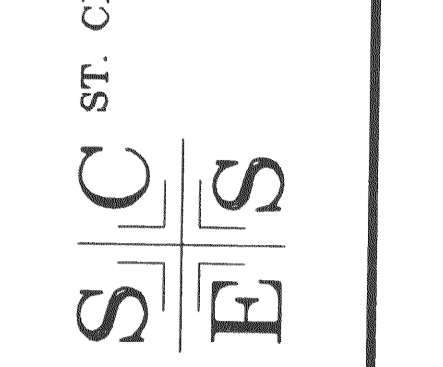
THE UNDERGROUND UTILITIES SHOWN HEREIN WERE PLOTTED FROM AVAILABLE INFORMATION AND DO NOT NECESSARILY REFLECT THE ACTUAL EXISTENCE OR NONEXISTENCE, SIZE, TYPE, NUMBER OR LOCATION OF THESE OR OTHER UTILITIES. THE GENERAL CONTRACTOR SHALL BE RESPONSIBLE FOR VERIFYING THE ACTUAL LOCATION OF ALL UNDERGROUND UTILITIES, SHOWN OR NOT SHOWN, AND SAID UTILITIES SHALL BE LOCATED IN THE FIELD PRIOR TO ANY GRADING, EXCAVATION OR CONSTRUCTION OF IMPROVEMENTS. THESE PROVISIONS SHALL IN NO WAY ABSOLVE ANY PARTY FROM COMPLYING WITH THE UNDERGROUND FACILITY SAFETY AND DAMAGE PREVENTION ACT, CHAPTER 319, RSMO.



02/18/08
09/06/08
REVISED PER CITY COMMENTS
REVISED STORM SEWERS

BELLEAU CROSSING CROSSING DRAINAGE AREA

ST. CHARLES ENGINEERING & SURVEYING, INC.
801 S. FIFTH STREET, SUITE 202
ST. CHARLES, MO 63301
TEL: (636) 947-0607 FAX: (636) 947-2448



8-20-08
ORDER NO. 04-1419-01
DATE

C-22

- NOT FOR CONSTRUCTION -

O'FALLON P+Z NO. 3805.05
APPROVED AUGUST 16, 2007
I:\041419\dwg\041419.dwg 08/20/08-2:21pm