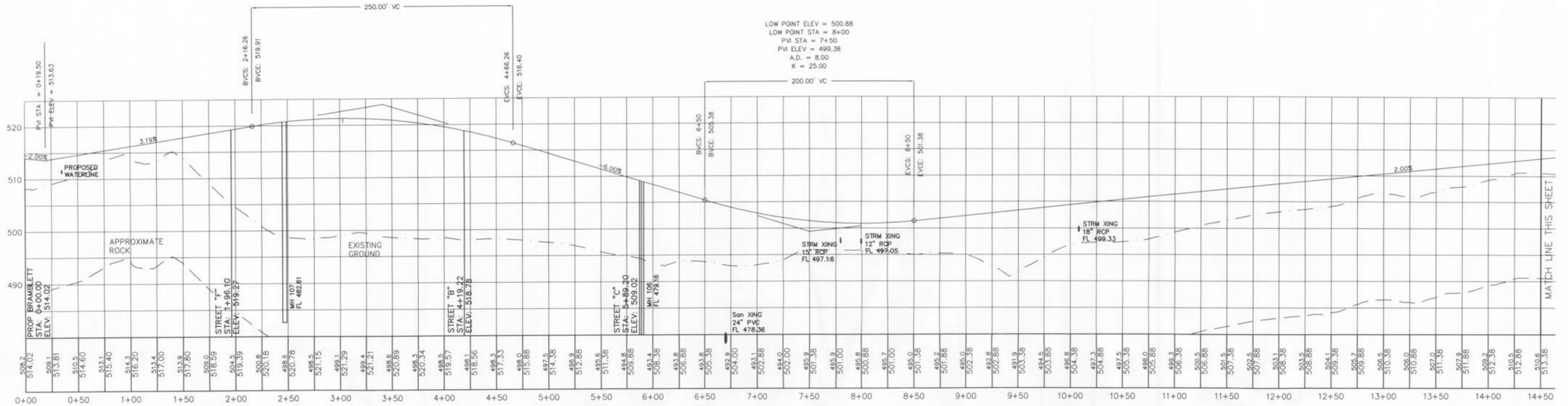


HIGH POINT ELEV = 521.30  
 HIGH POINT STA = 3+03.07  
 PVI STA = 3+41.26  
 PVI ELEV = 523.90  
 A.D. = -9.19  
 K = 27.20

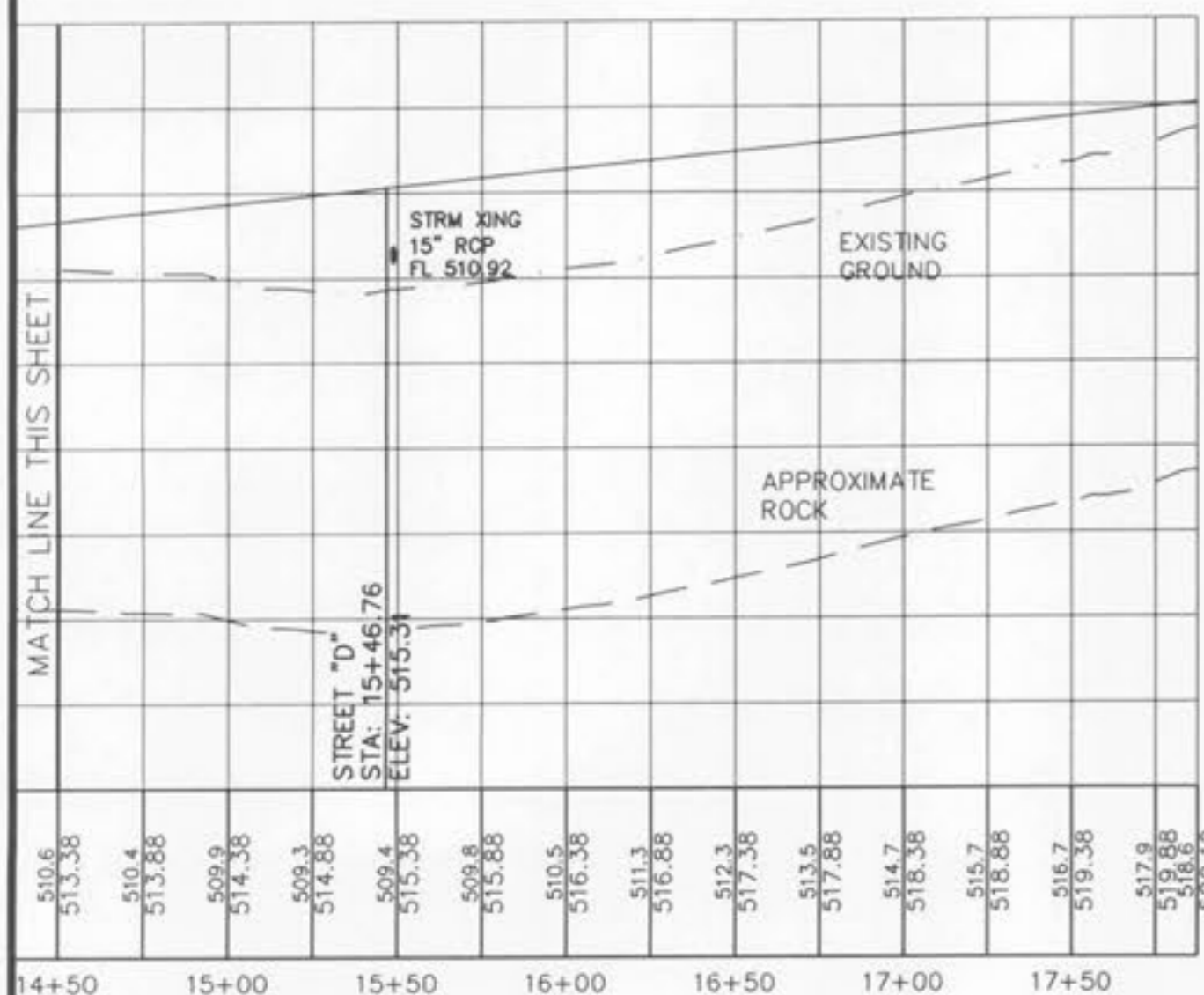
LOW POINT ELEV = 500.88  
 LOW POINT STA = 8+00  
 PVI STA = 7+50  
 PVI ELEV = 499.38  
 A.D. = 8.00  
 K = 25.00



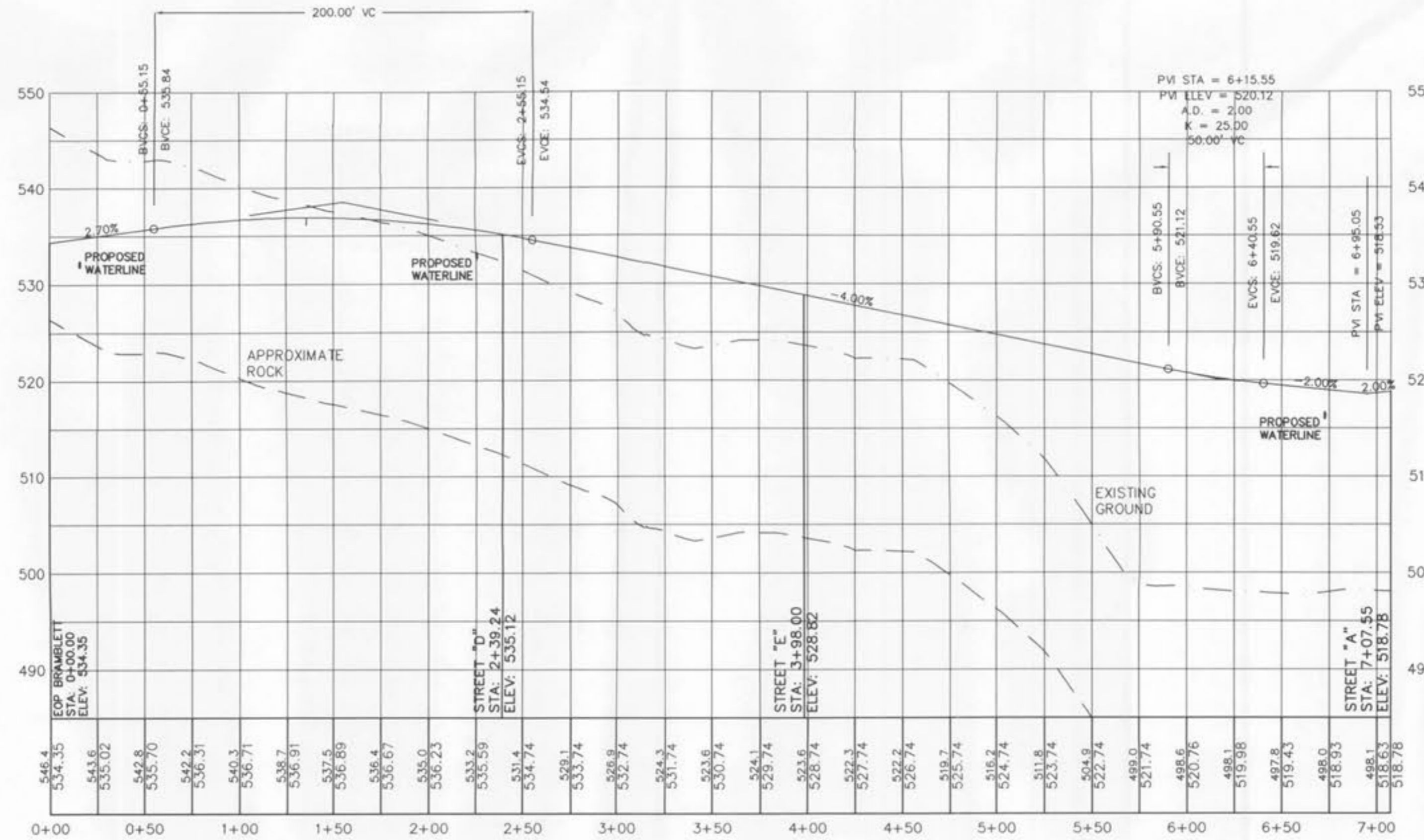
STREET "A"

HIGH POINT ELEV = 536.92  
 HIGH POINT STA = 1+55.71  
 PVI STA = 1+55.15  
 PVI ELEV = 538.54  
 A.D. = -6.70  
 K = 29.86

VERT. 1" = 10'  
 HORIZ. 1" = 50'  
 SCALE:



STREET "A"



STREET "B"

O'FALLON P+Z NO. 3805.05

BELLEAU  
 CROSSING  
 STREET

ST. CHARLES ENGINEERING & SURVEYING, INC.  
 801 S. FIFTH STREET, SUITE 202  
 ST. CHARLES, MO 63301  
 TEL: (636) 947-0607 FAX: (636) 947-2448



ORDER NO.

04-1419-01

DATE

12/05/07

C-10