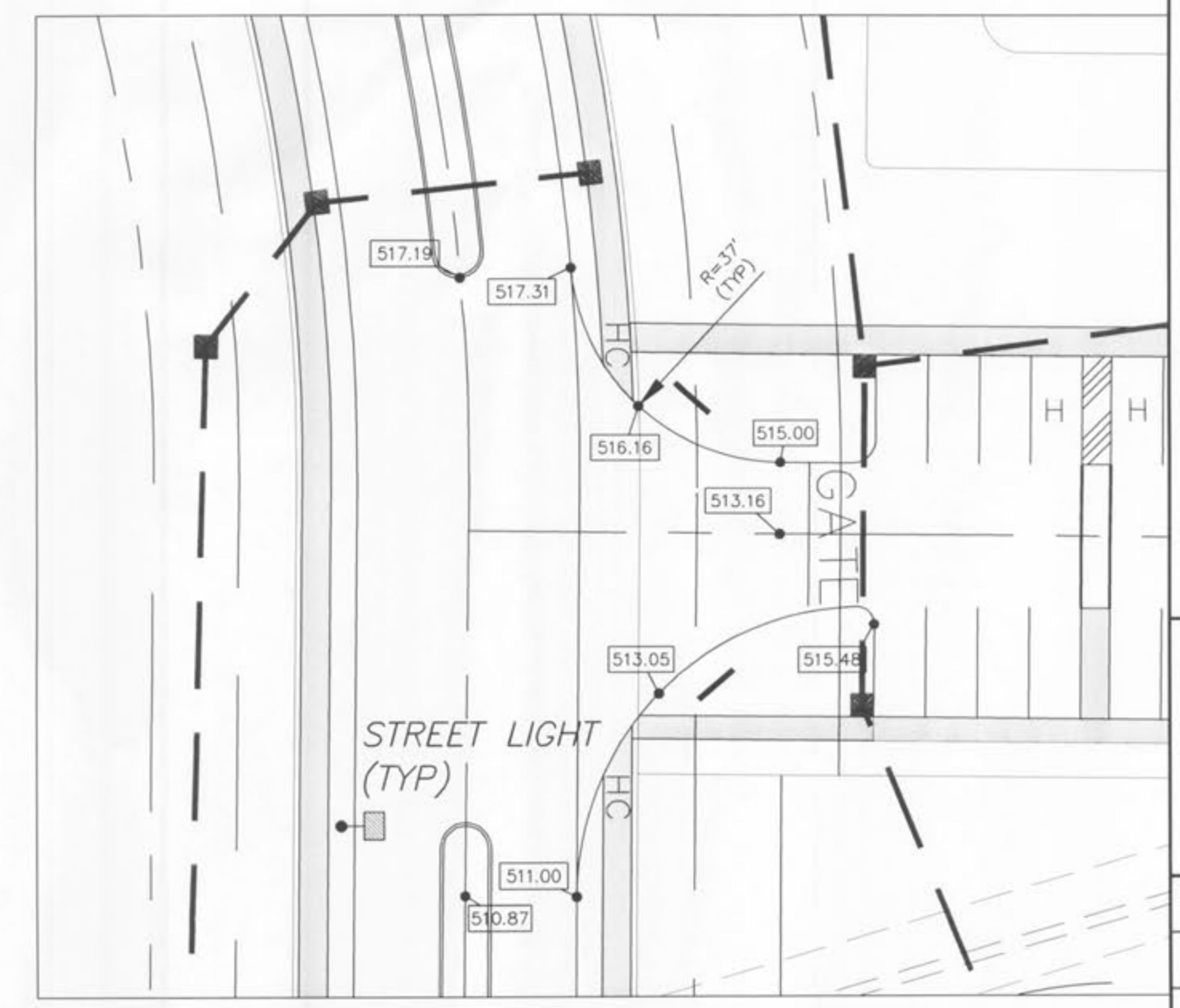
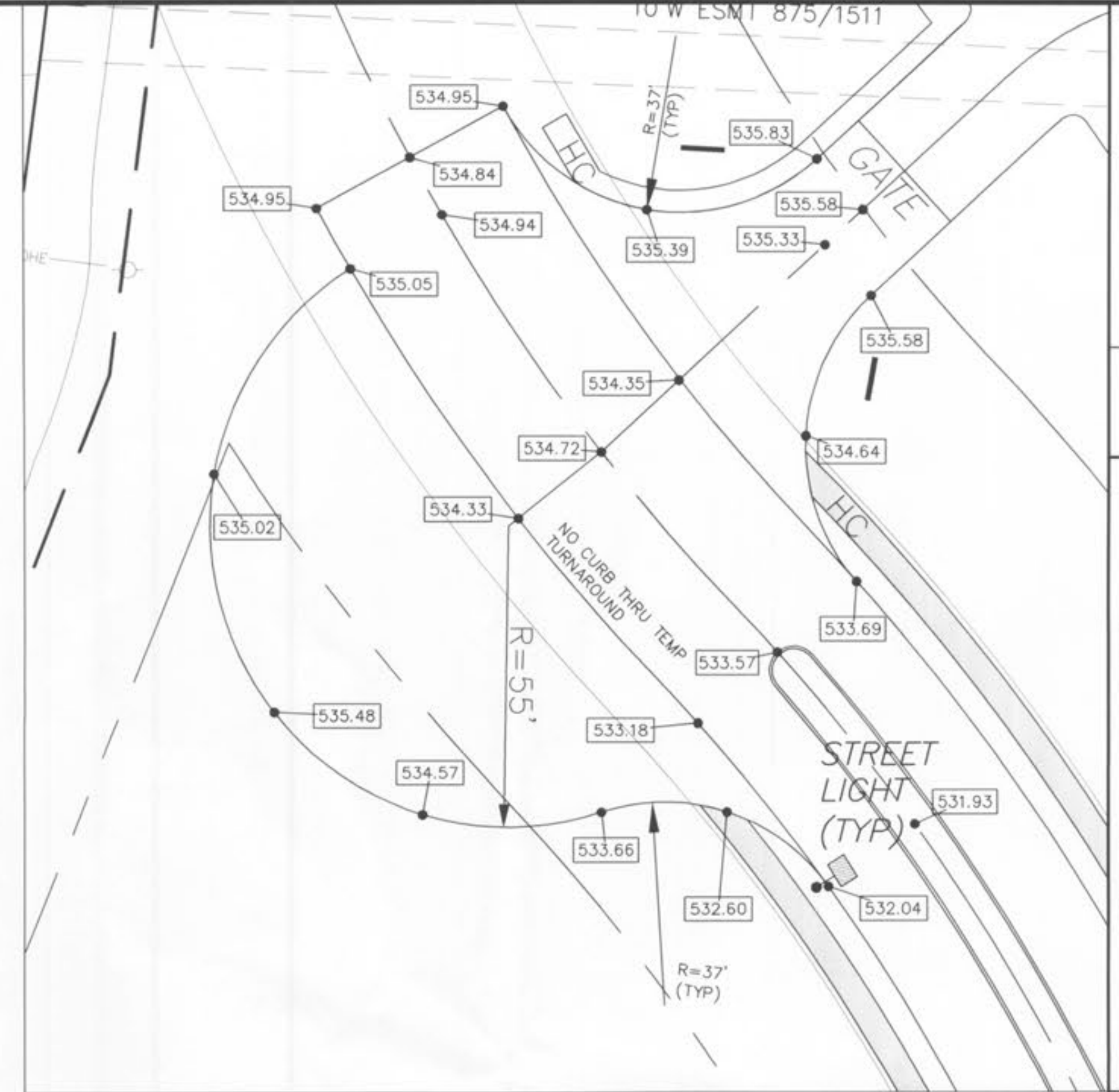


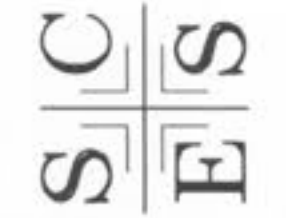
BRAMBLETT ROAD SOUTH CONNECTION TO HWY K  
WILL BE CLOSED DURING PAVEMENT CONSTRUCTION

ALL ELEVATIONS ARE TOP BACK OF CURB



**BELLEAU  
CROSSING  
WARPINGS**

ST. CHARLES ENGINEERING & SURVEYING, INC.  
801 S. FIFTH STREET, SUITE 202  
ST. CHARLES, MO 63301  
TEL: (636) 947-0607 FAX: (636) 947-2448



ORDER NO.  
04-1419-01  
DATE  
12/05/07