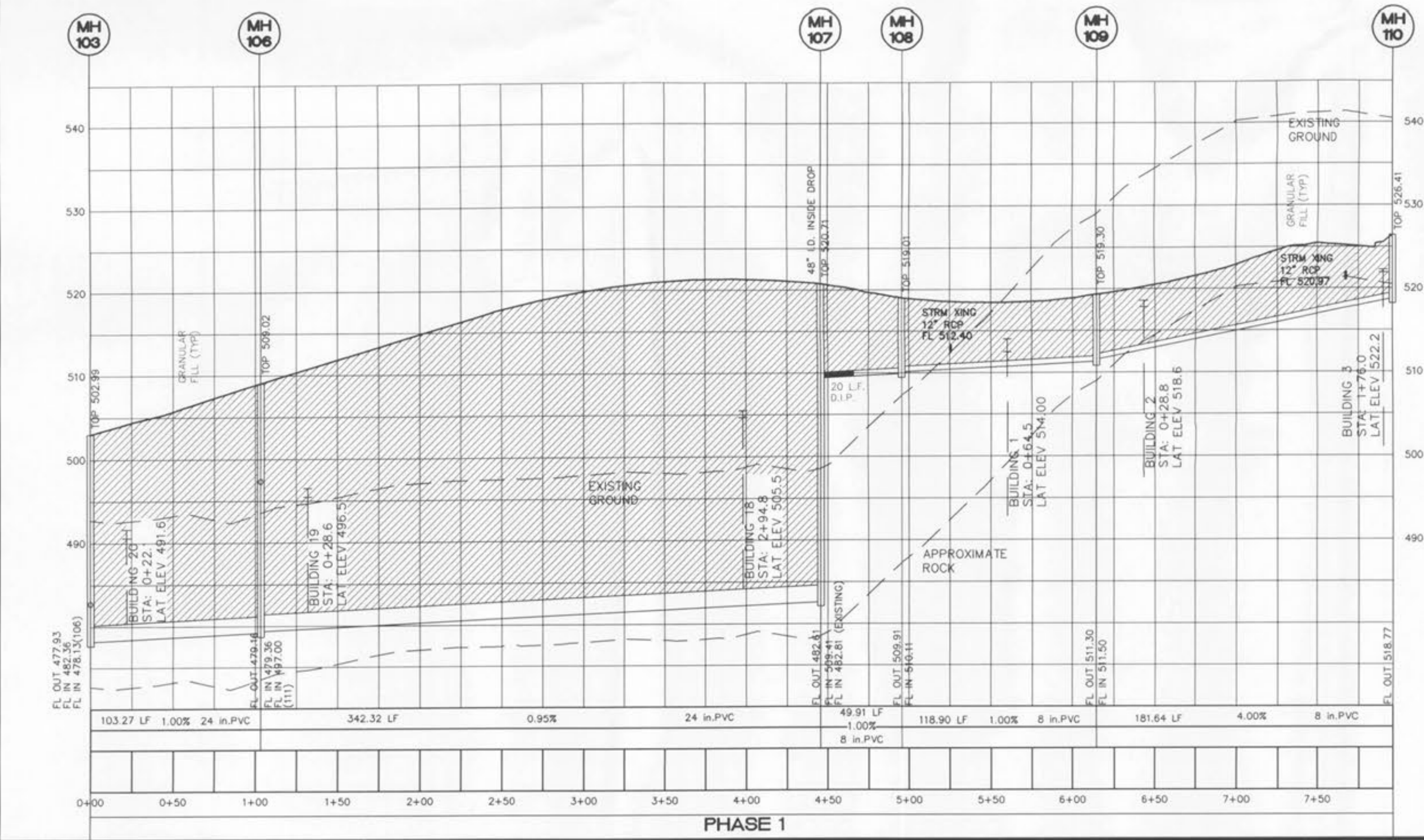
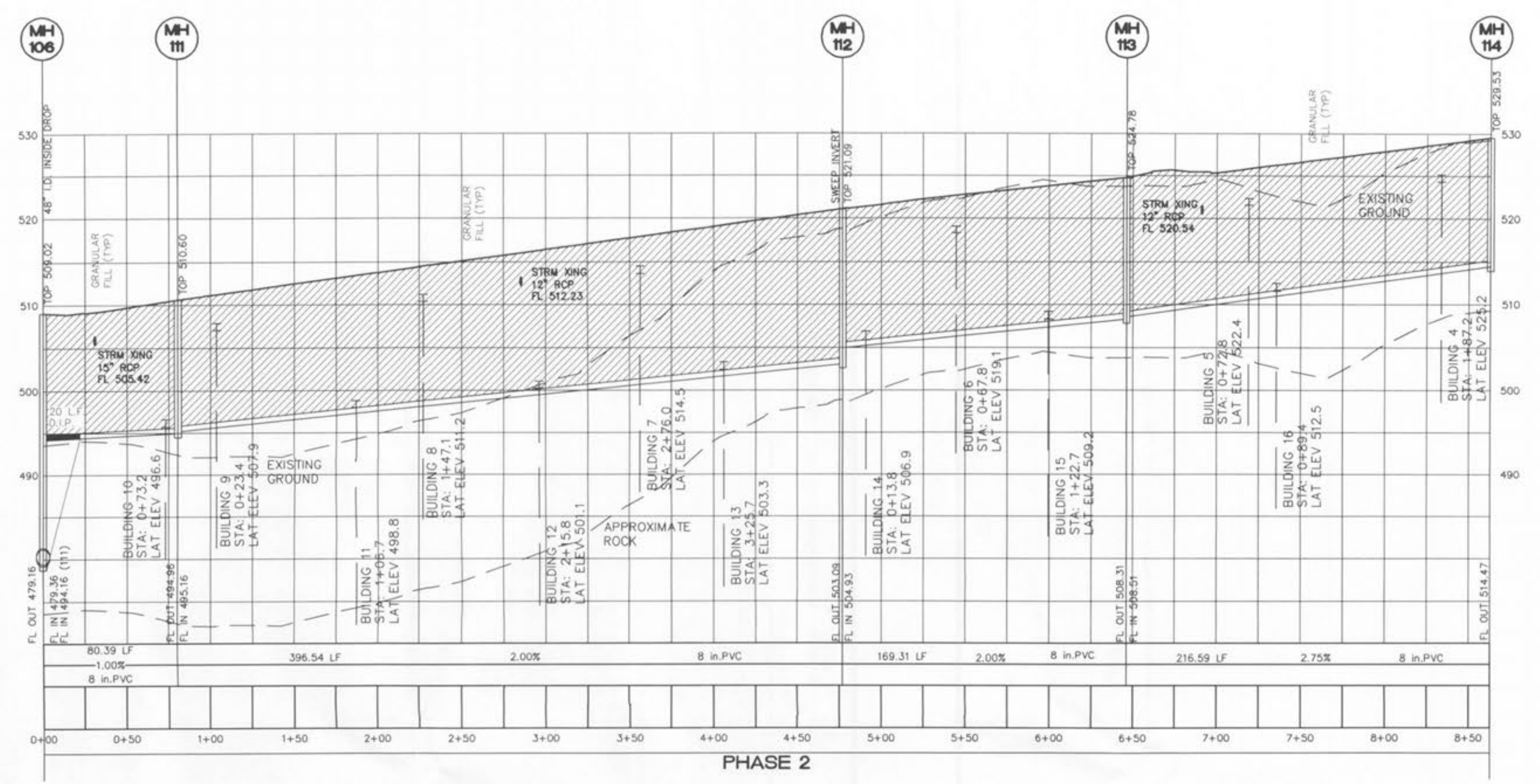
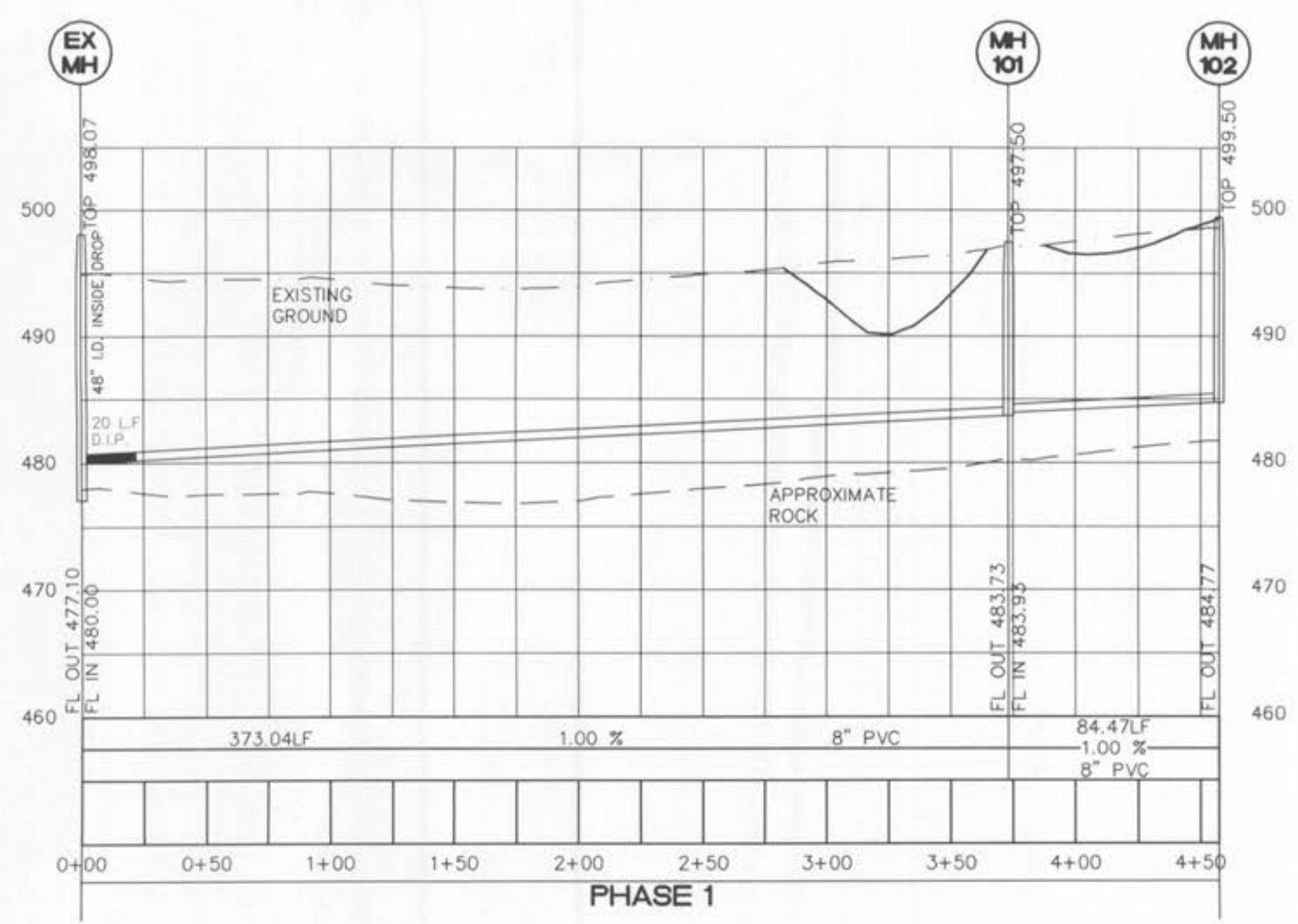


- SANITARY NOTES:
1. A minimum of 6" diameter pipe shall be used for sanitary laterals.
 2. A minimum of 8" diameter pipe shall be used for sanitary sewers.
 3. Sewer grease traps and cleanouts required on sanitary laterals as shown.
 4. Inside drop manholes must be a minimum of 48" in diameter.
 5. Sanitary sewer line placement shall be a minimum of 10' from any proposed structures.
 6. All manholes are to have a minimum 0.20' drop across the structure.
 7. For drop structures, compacted rock backfill is required in the disturbed ground around the structure.
 8. A concrete cradle for RCP and encasement for HDPE will be required for all storm sewer lines when crossing less than 18" above the sanitary lines.

VERT. 1" = 10'
HORIZ. 1" = 50'
SCALE:



- NOTES:
- SANITARY PIPE FROM MH106 TO MH111 NOT TO BE INSTALLED PER THE CITY OF O'FALLON REQUIREMENTS UNTIL CITY OF O'FALLON TREATMENT PLANT RECEIVED DNR APPROVAL.
 - SANITARY PIPE FROM MH107 TO MH108 NOT TO BE INSTALLED PER THE CITY OF O'FALLON REQUIREMENTS UNTIL CITY OF O'FALLON TREATMENT PLANT RECEIVED DNR APPROVAL.
 - MANHOLES 101, 108, AND 111 WILL BE USED TO STORE SEWAGE AND WILL BE PUMPED OUT PER CITY OF O'FALLON REQUIREMENTS UNTIL CITY OF O'FALLON TREATMENT PLANT RECEIVES DNR APPROVAL.



**BELLEAU
CROSSING
SANITARY**

SIC EIS
ST. CHARLES ENGINEERING & SURVEYING, INC.
801 S. FIFTH STREET, SUITE 202
ST. CHARLES, MO 63301
TEL: (636) 947-0607 FAX: (636) 947-2448

ORDER NO. 04-1419-01
DATE 12/05/07
C-14