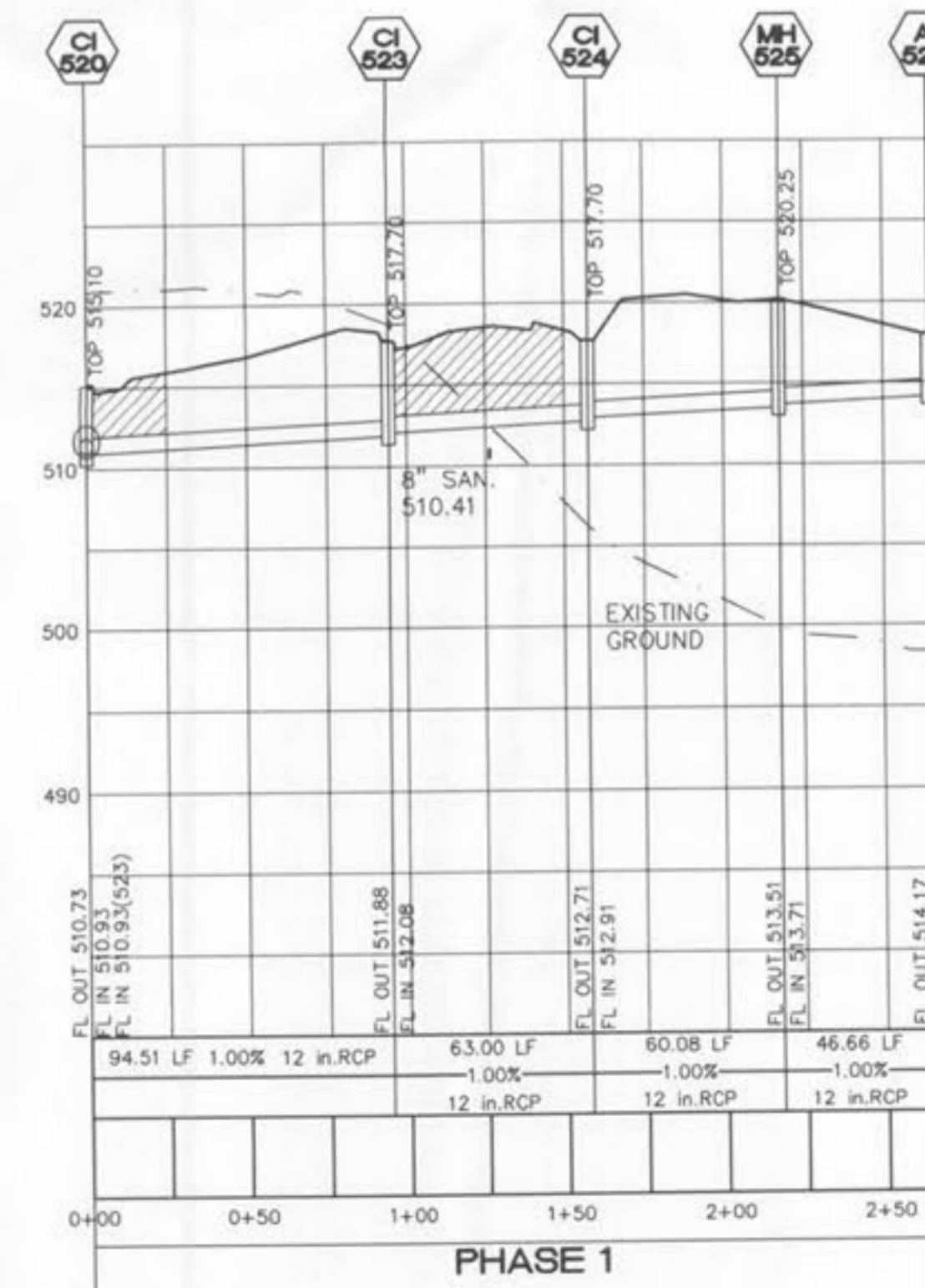
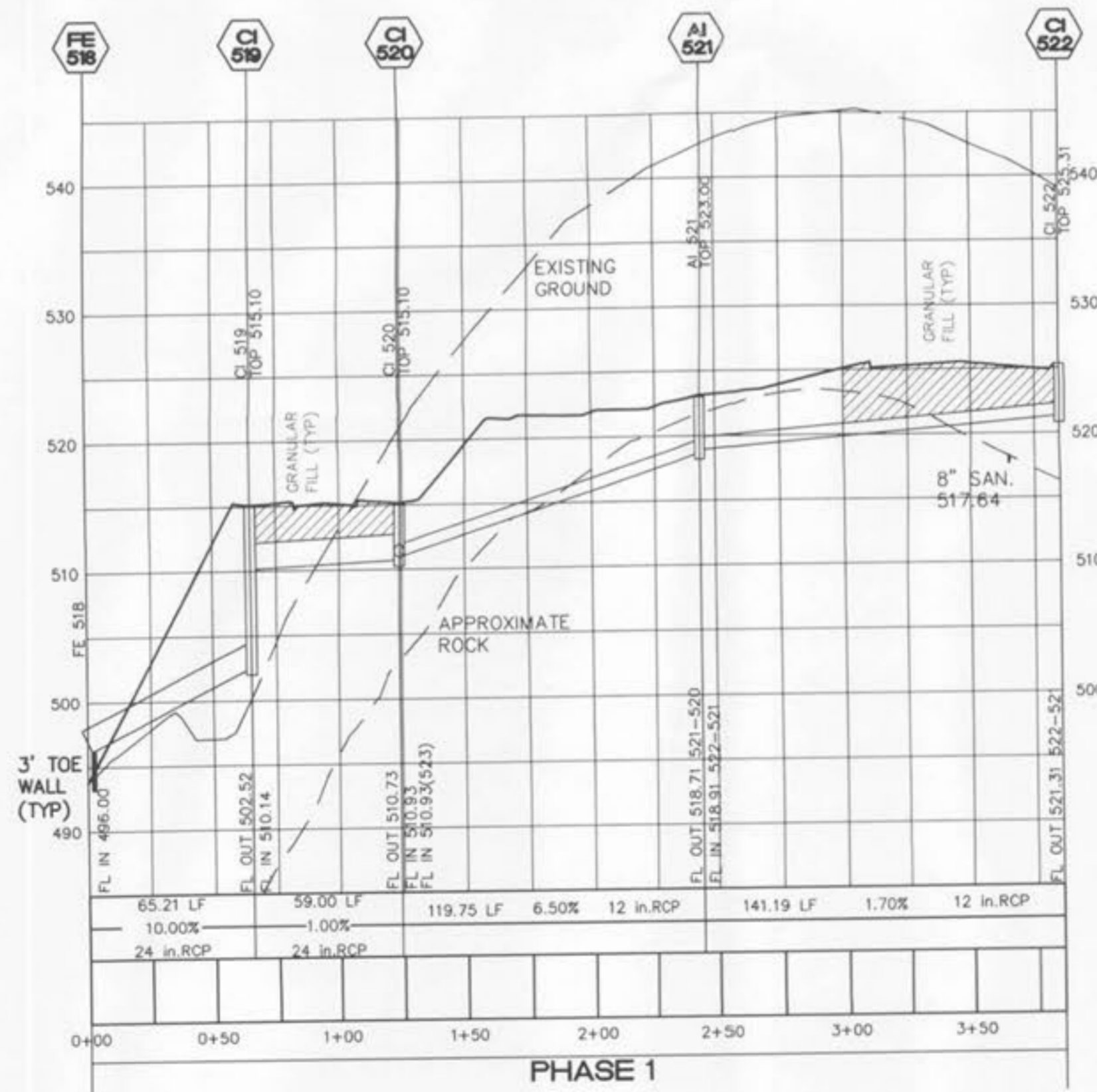
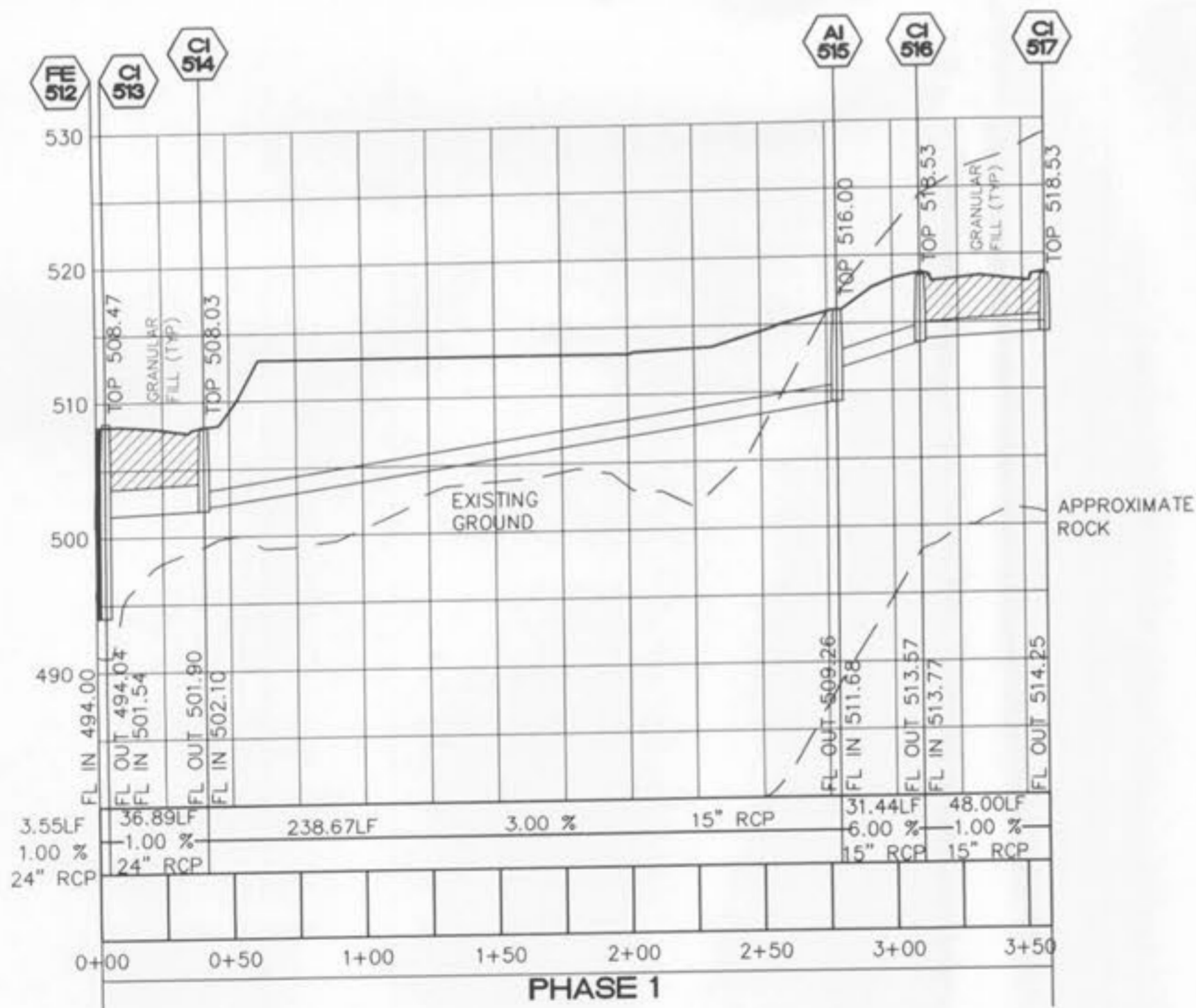
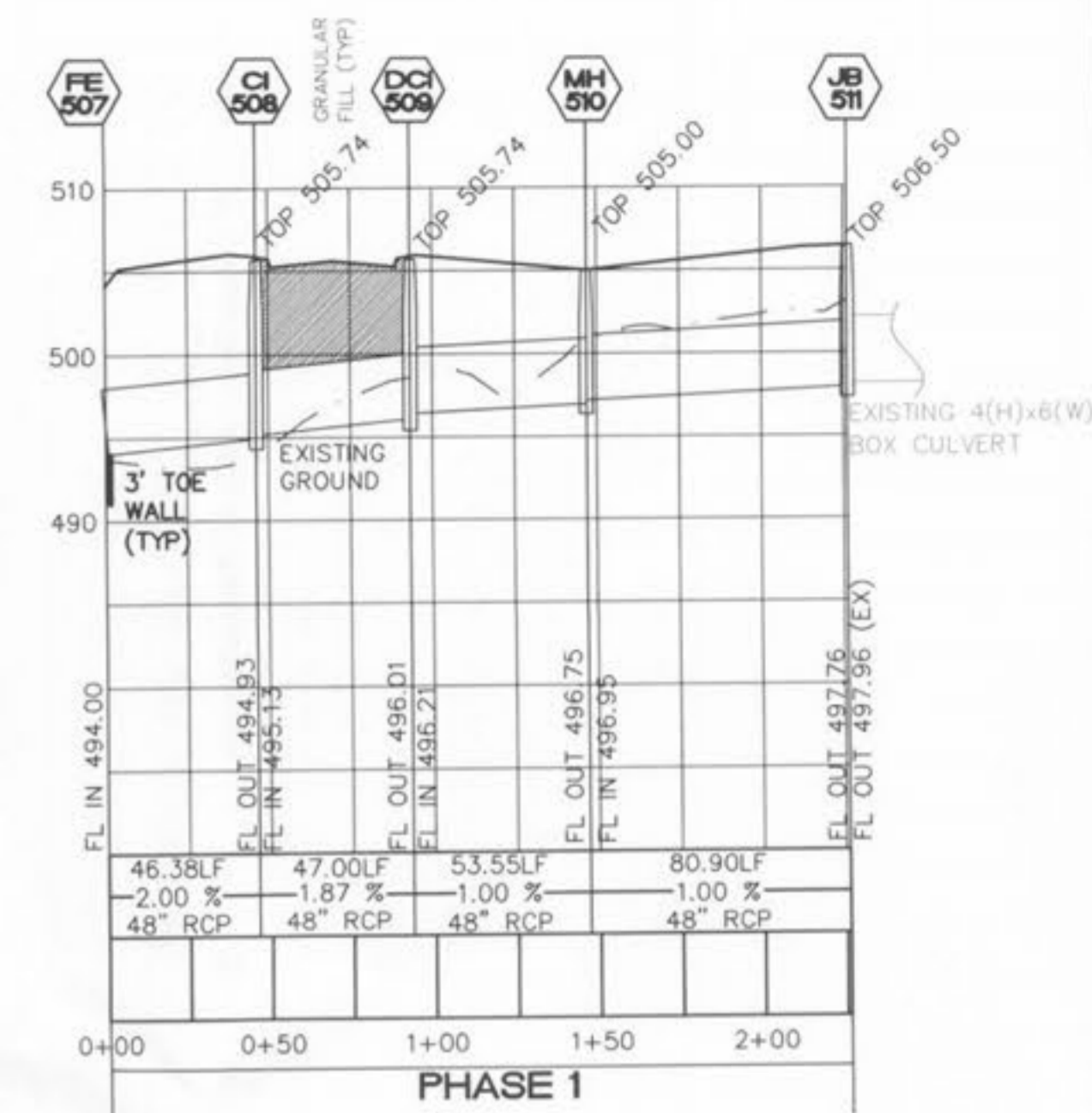
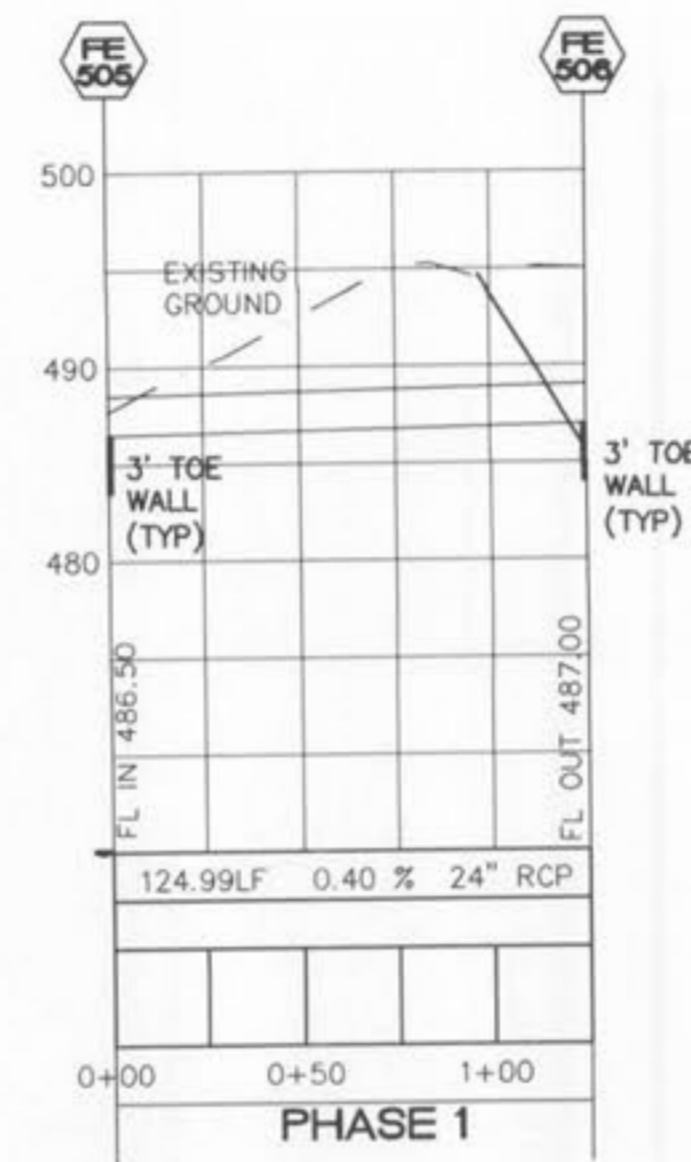
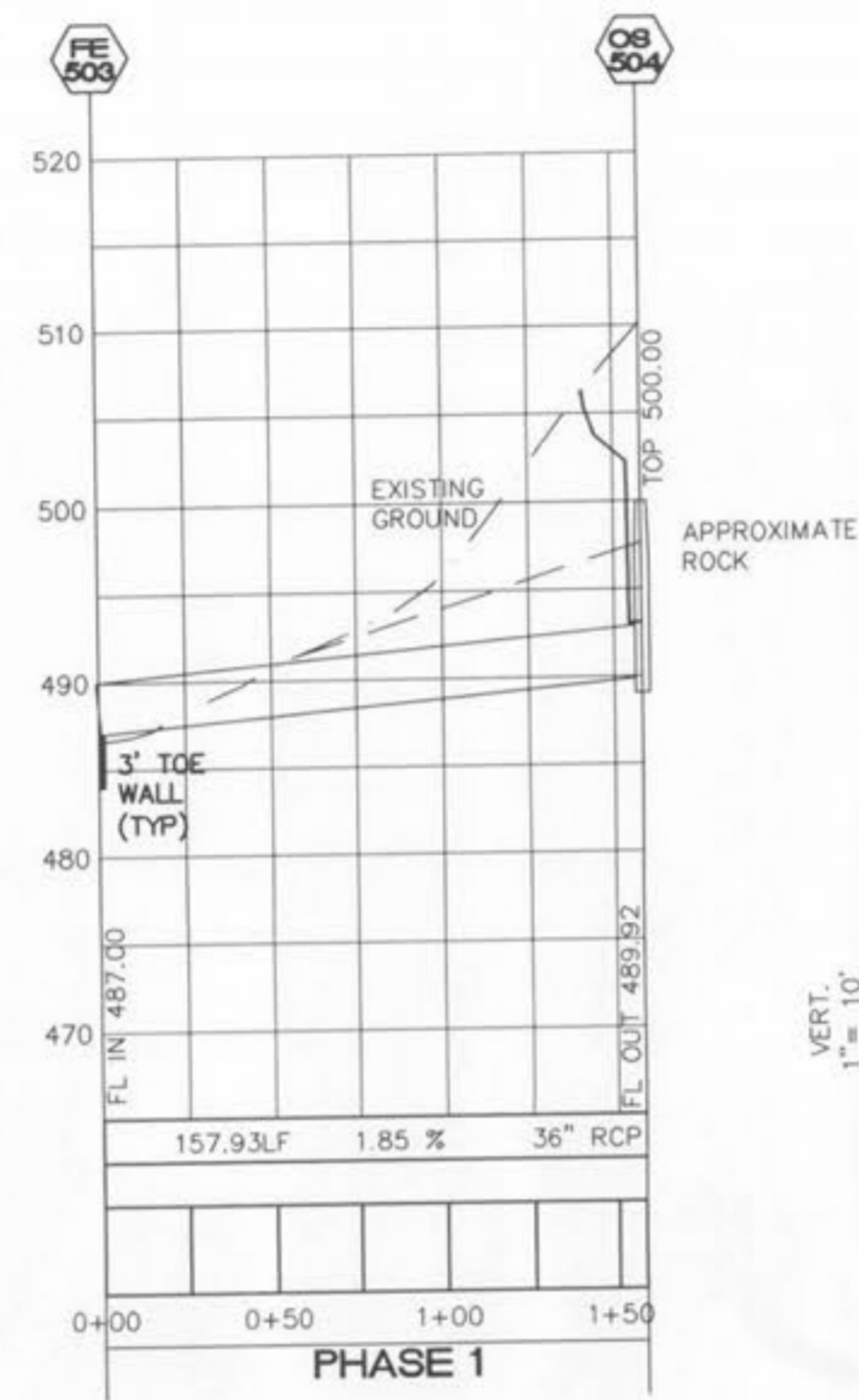
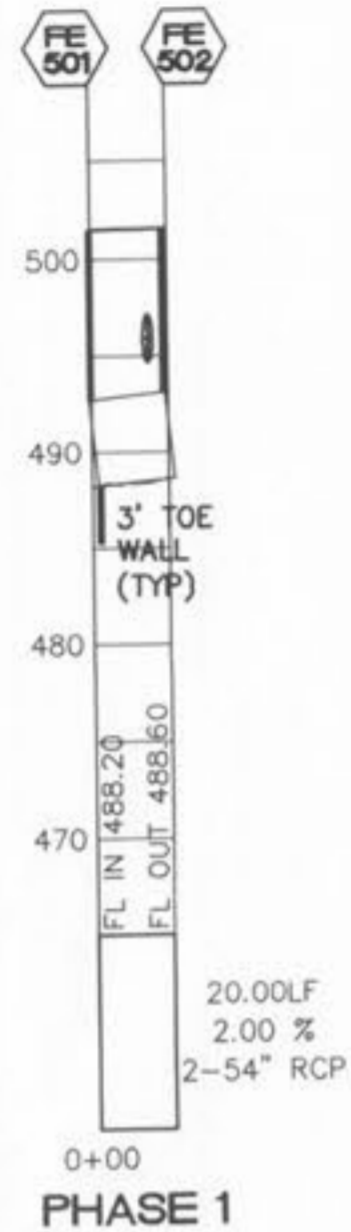


STORM NOTES:

- All structures are to have a minimum 0.20' drop across the structure
- All flored ends shall be concrete.
- For drop structures, compacted rock backfill is required in the disturbed ground around the structure.
- Concrete encase both storm and sanitary sewers if crossing is less than 18" of separation. A concrete cradle for RCP and encasement for HDPE will be required for all storm sewer lines when crossing more than 18" above the sanitary lines.
- Structures shall be sized to handle incoming and outgoing pipes.
 - 42" Structure - 12"-18" Pipe with A-Lock
 - 48" Structure - 21"-24" Pipe with A-Lock
 - 60" Structure - 27"-30" Pipe with A-Lock
 - 72" Structure - 36" Pipe with A-Lock
 Angle of incoming and outgoing pipe may require a larger structure. (see Shop Drawings)



**BELLEAU
CROSSING
STORM**

ST. CHARLES ENGINEERING & SURVEYING, INC.
801 S. FIFTH STREET, SUITE 202
ST. CHARLES, MO 63301
TEL: (636) 947-0607 FAX: (636) 947-2448



ORDER NO.
04-1419-01
DATE
12/05/07

C-15