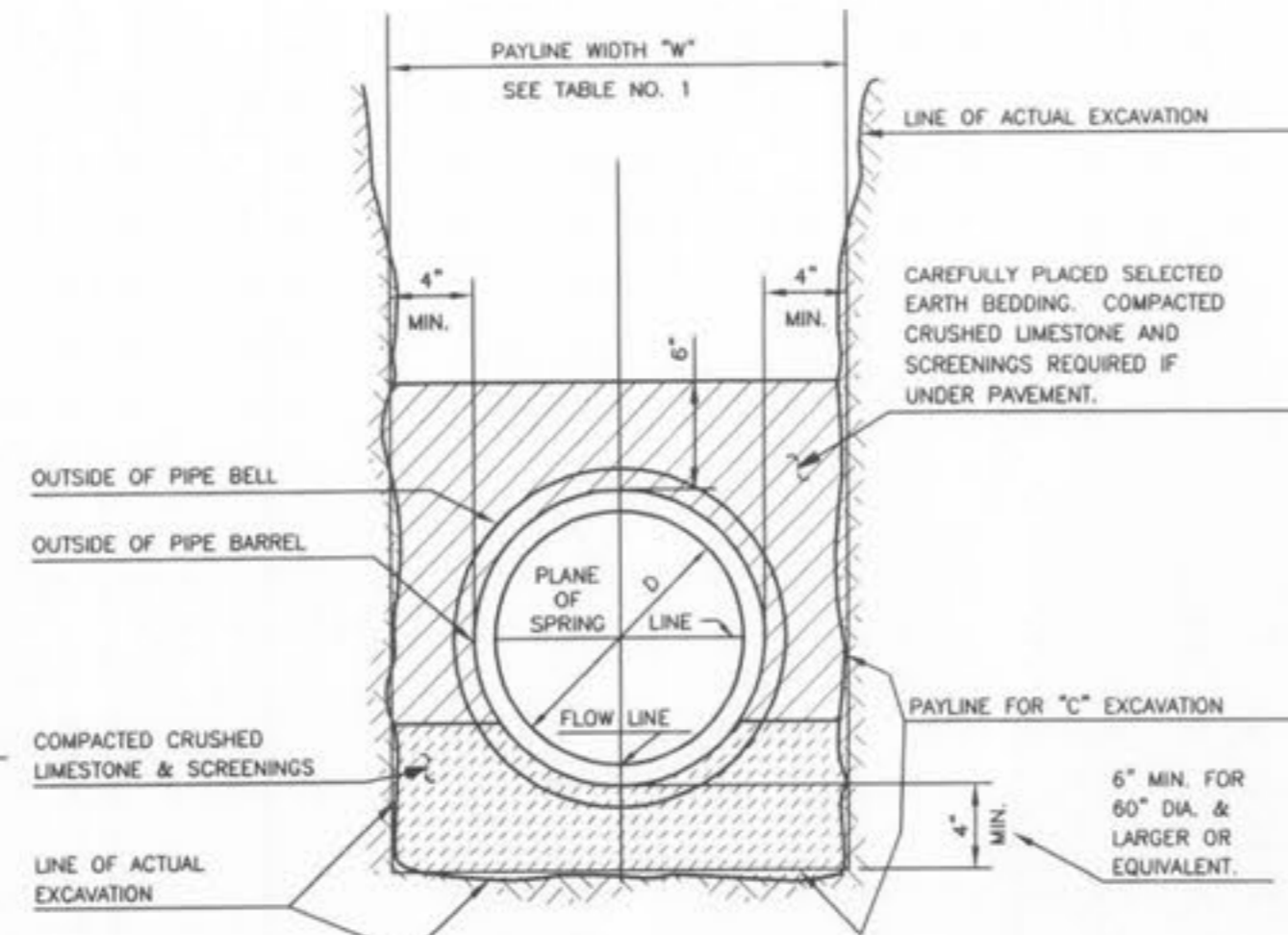
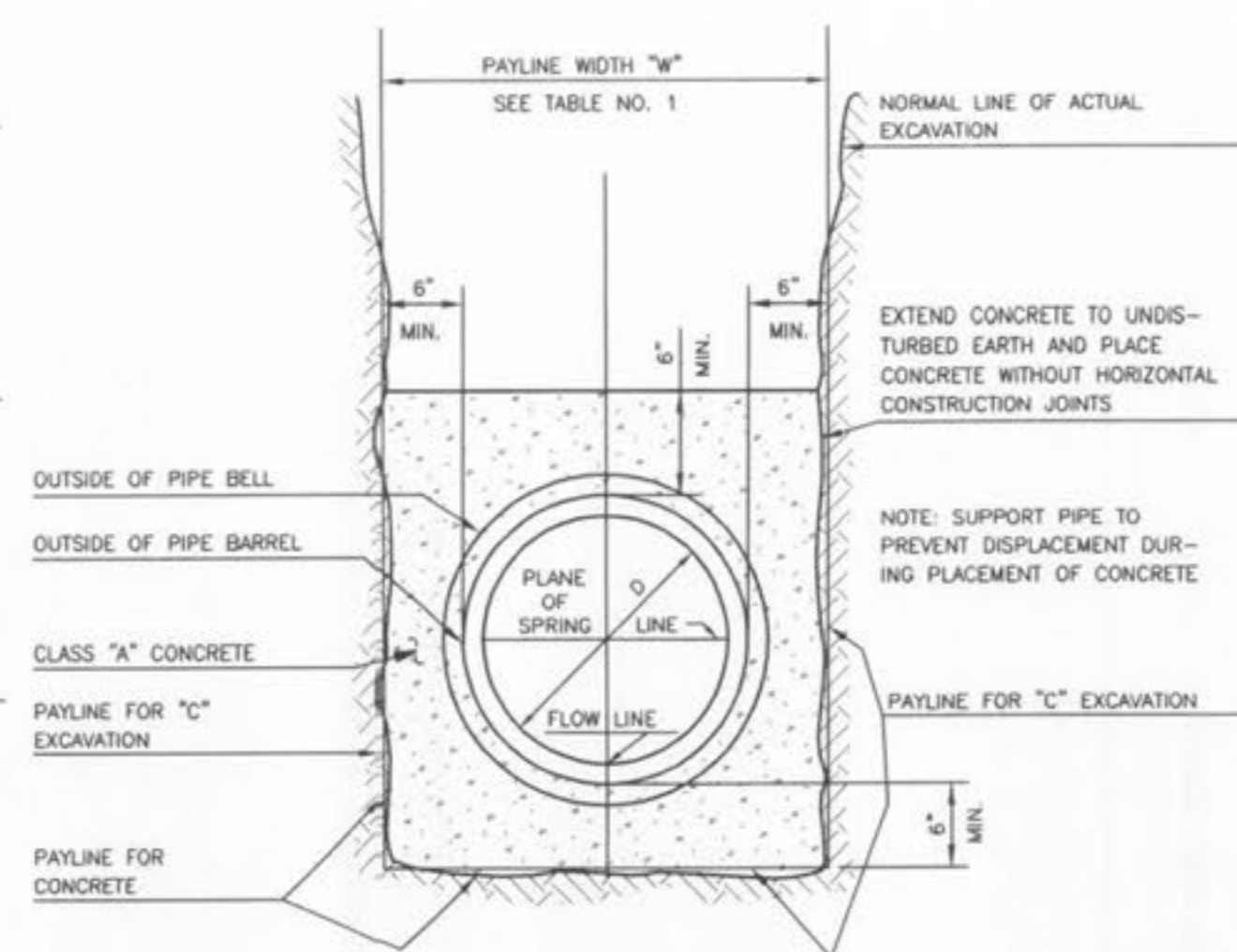


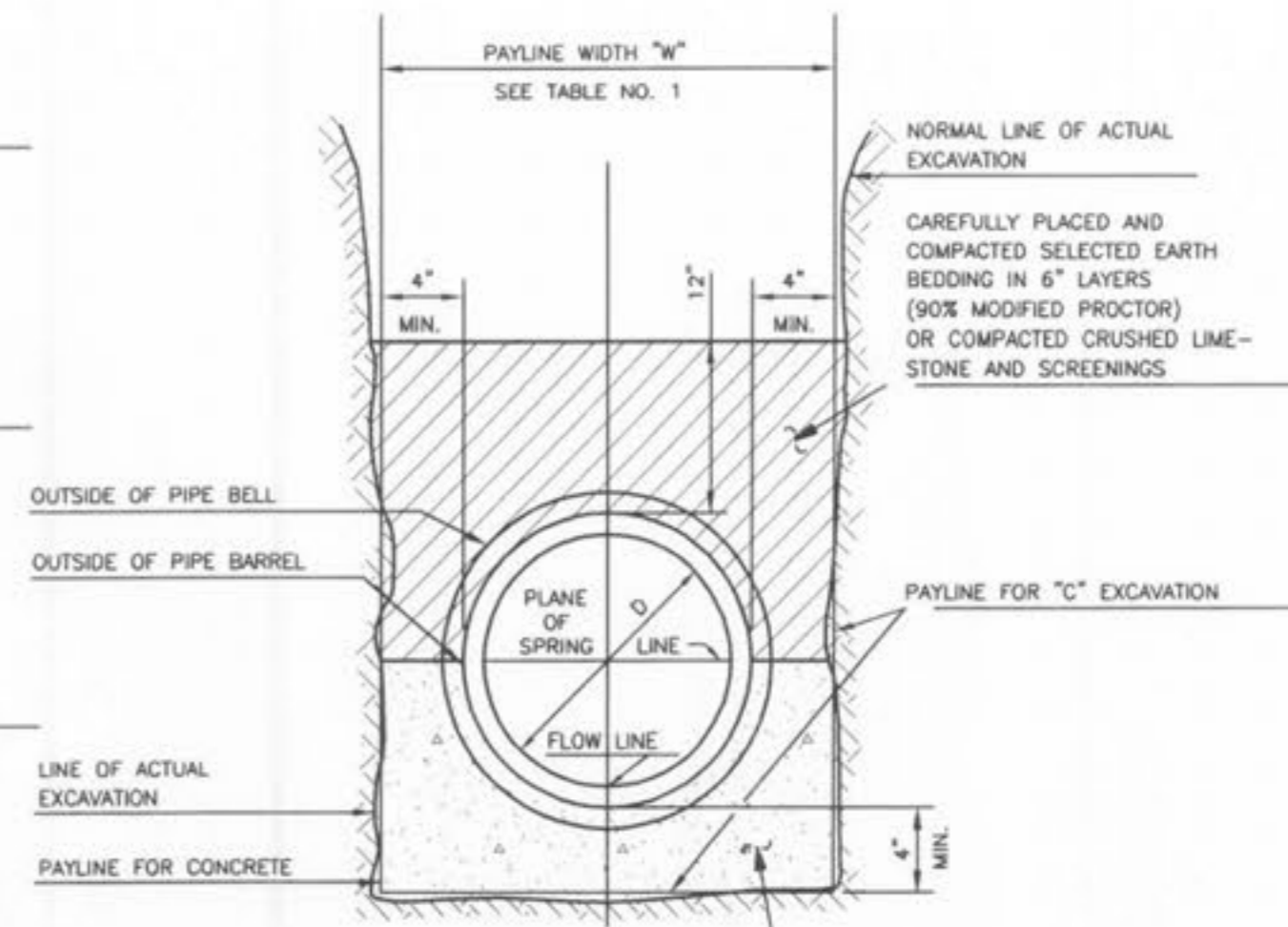
PIPE BEDDING CLASS "C"
(FOR ALL PIPE EXCEPT
REINFORCED CONCRETE PIPE)



PIPE BEDDING CLASS "C"
(MODIFIED FOR REINFORCED
CONCRETE PIPE)



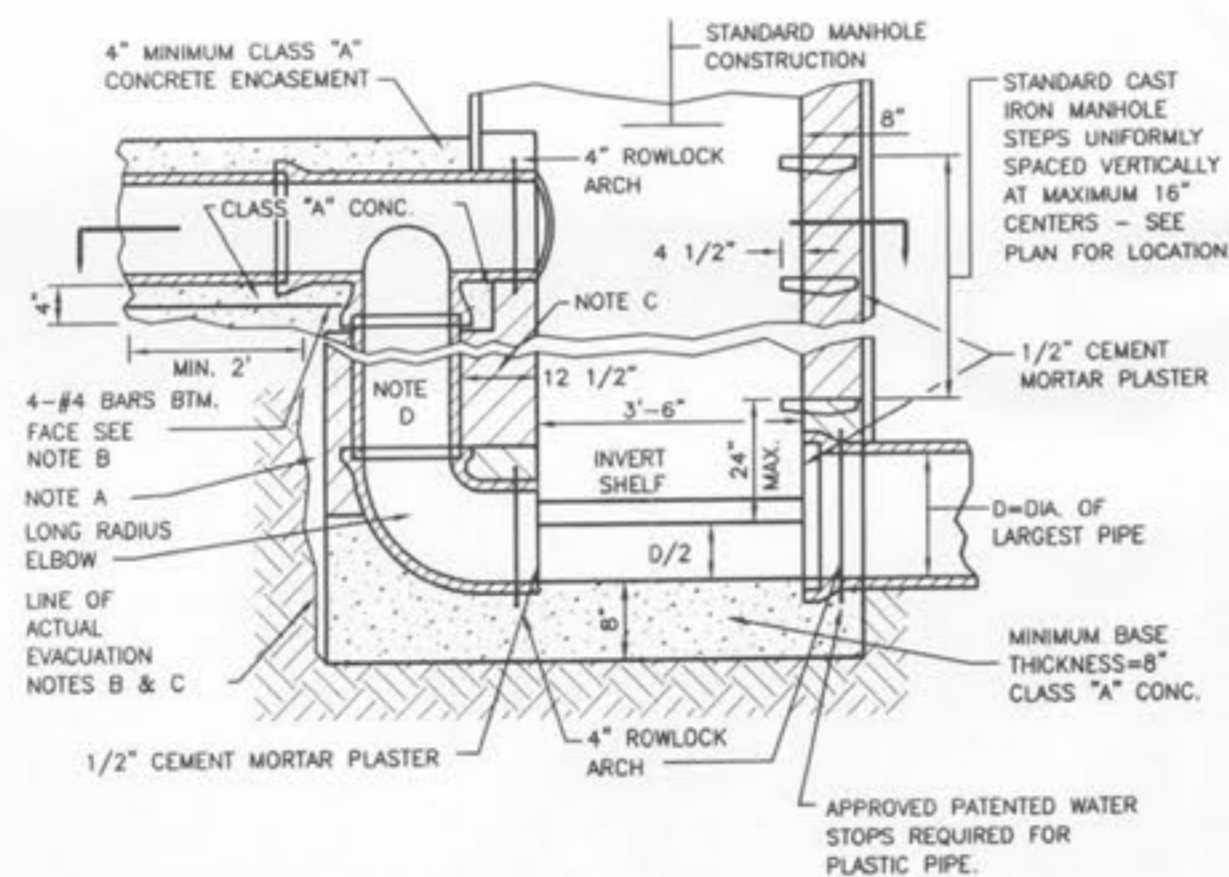
CONCRETE ENCASEMENT



(CLASS "A" BEDDING)
CONCRETE CRADLE

ALSO FOR PIPE SEWERS ON GRADES
25% TO 50% INCLUSIVE.
FOR GRADES EXCEEDING 50% SEE
PROJECT SPECIFICATIONS.

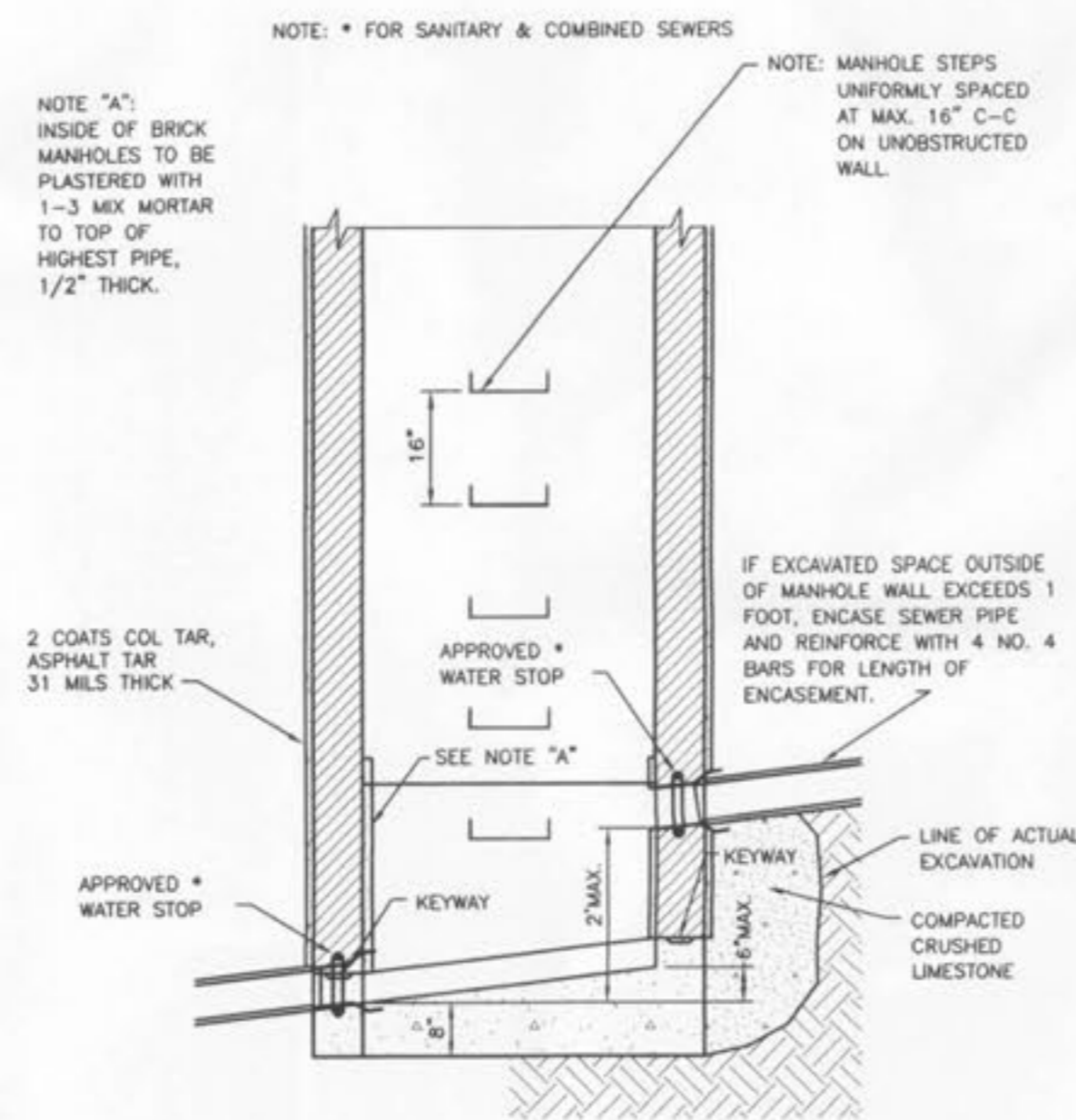
CLASS "A" CONCRETE. FOR
PLASTIC PIPE USE CONCRETE
COLLARS TWO FEET LONG AND
SIX INCHES THICK EVERY
TWELVE FEET ADJACENT TO
AND DOWN STREAM OF BELLS.
(IN LIEU OF CONC. CRADLE)



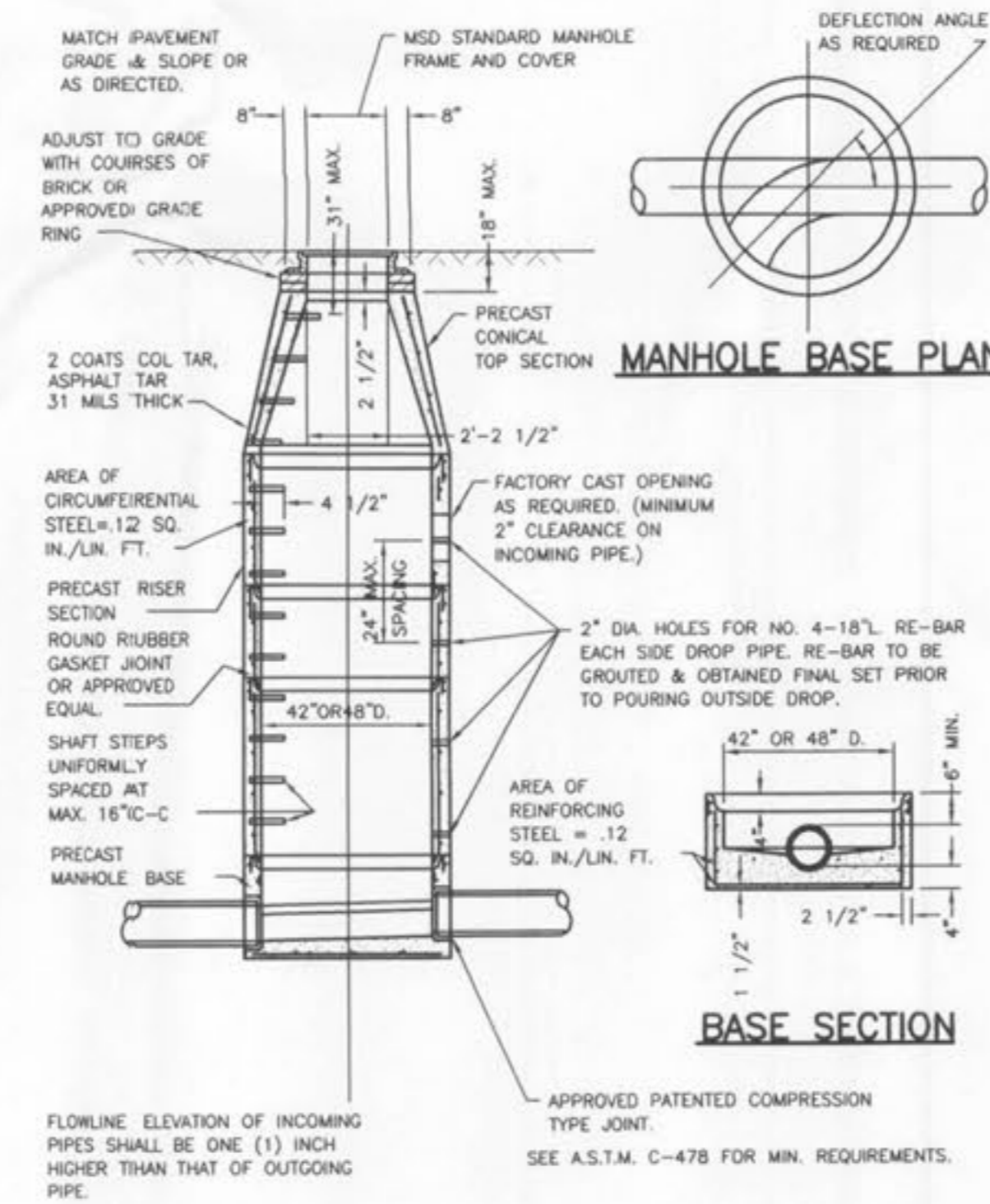
PLAN SECTION

SEE ACCOMPANYING SHEET FOR NOTES.

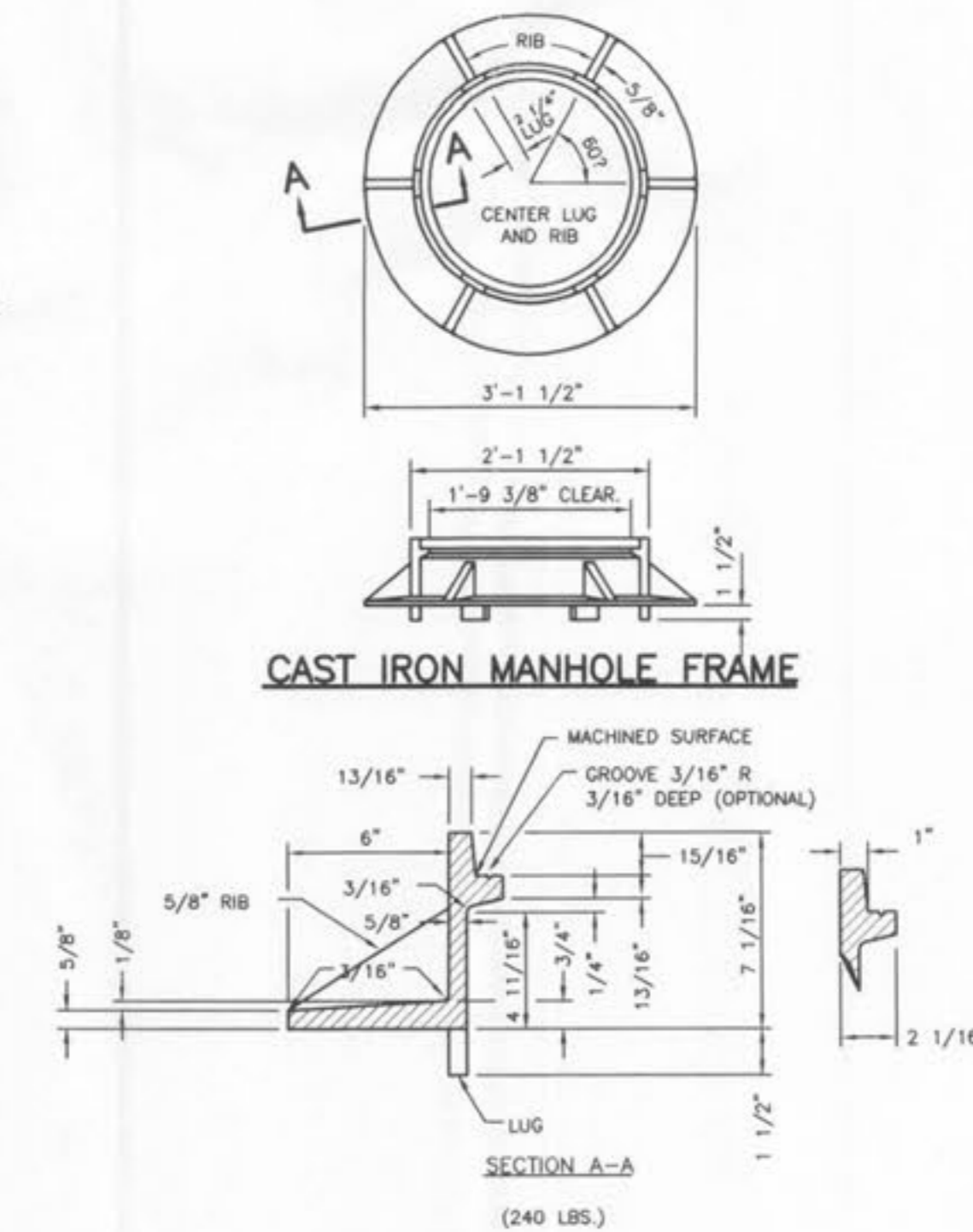
**OUTSIDE FOULWATER
DROP MANHOLE**



**INSIDE DROP
(8" THRU 24" DIA. PIPE)**



**PRE-CAST CONCRETE MANHOLE
FOR SEWERS
8" THROUGH 12"**



**CAST IRON
MANHOLE FRAME**



DISCLAIMER OF RESPONSIBILITY
I HEREBY CERTIFY THAT THE DOCUMENTS PREPARED
BY ME OR UNDER MY SUPERVISION AND TO THE BEST OF MY KNOWLEDGE AND BELIEF
DO NOT VIOLATE ANY APPLICABLE LAWS, REGULATIONS, ORDINANCES, ORDERS OR OTHER
REQUIREMENTS OR INSTRUMENTS RELATING TO THE
PROVISIONS TO BE USED FOR ANY PART OF THE
OF THE ARCHITECTURE OR ENGINEERING PROJECT
OR PLAN.

DESIGNED: GDD
CHECKED: _____
DATE: _____
PROJECT NO.: _____
SHEET OF _____

STANDARD SANITARY DETAILS

CITY OF FALLON
DEPARTMENT OF PUBLIC
WORKS DESIGN GROUP
O'FALLON, MISSOURI

IMPROVEMENT PLANS
BELLEAU CROSSING
SANITARY DETAILS 1

ST. CHARLES ENGINEERING & SURVEYING, INC.
801 S. FIFTH STREET, SUITE 202
ST. CHARLES, MO 63301
TEL: (636) 947-0607 FAX: (636) 947-2448



ORDER NO. 04-1419-01
DATE 12/05/07
D-2