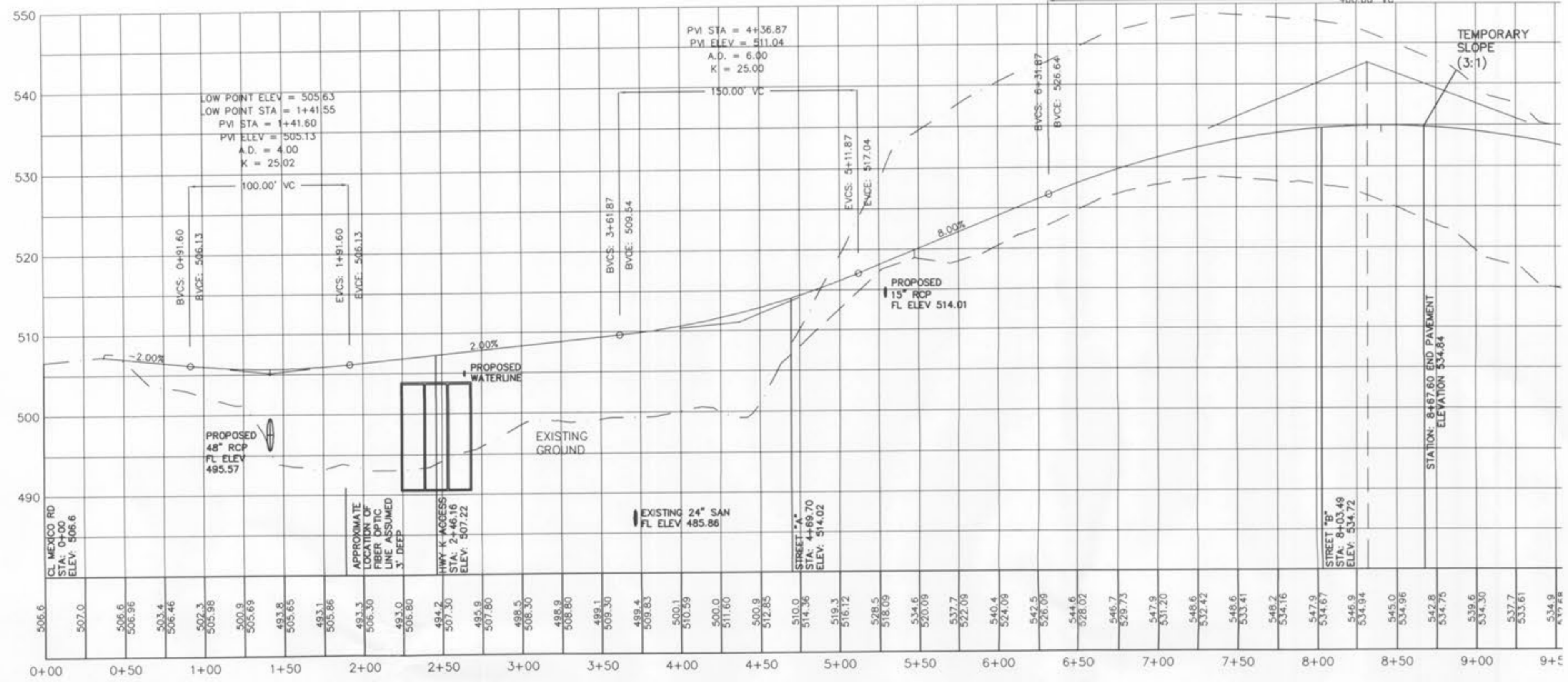
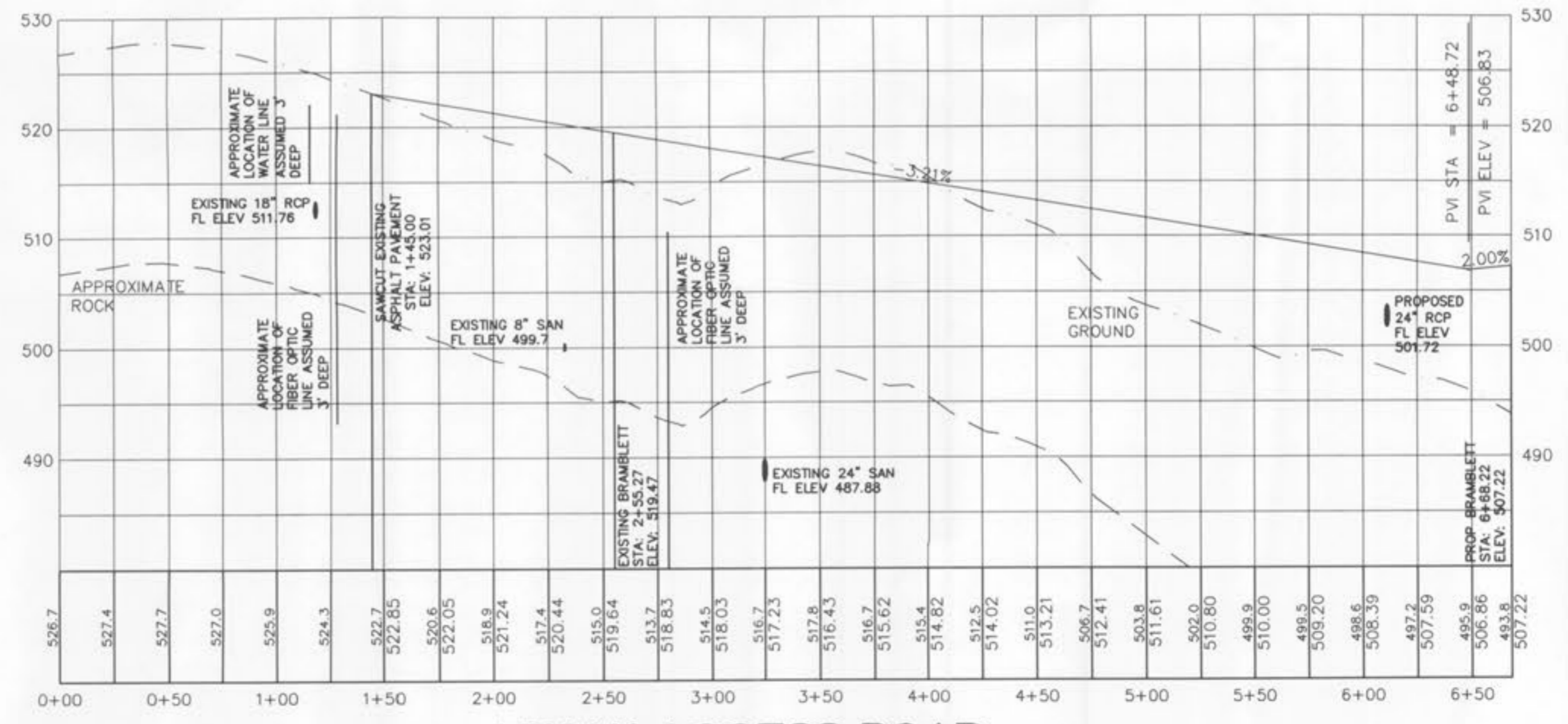


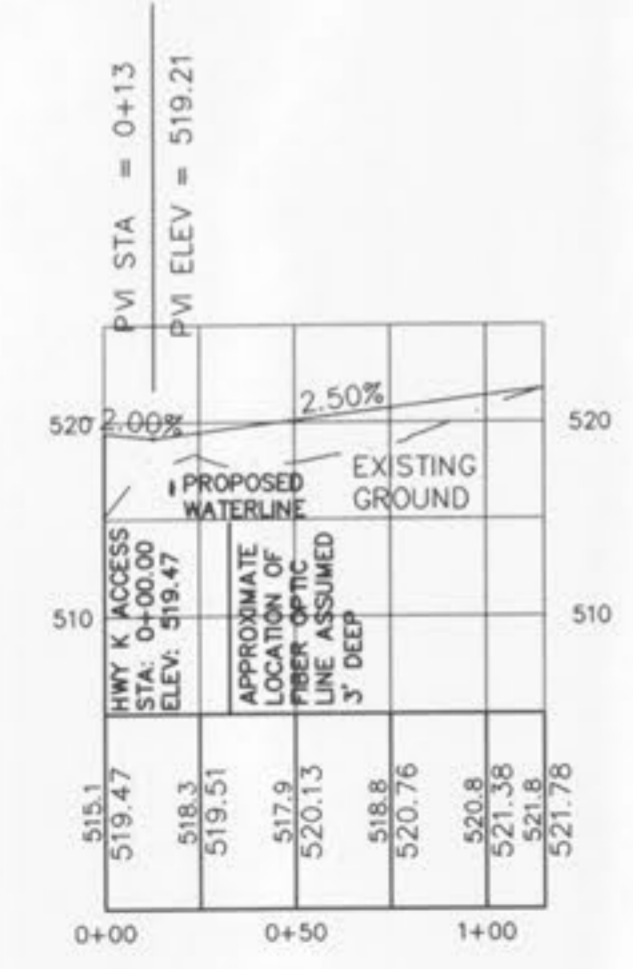
HIGH POINT ELEV = 534.98
 HIGH POINT STA = 8+40.47
 PVI STA = 8+31.87
 PVI ELEV = 542.64
 A.D. = -15.34
 K = 26.08



**BRAMBLETT ROAD
(PUBLIC)**



HWY K ACCESS ROAD

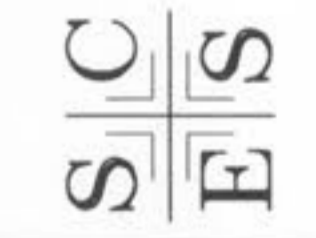


Ex. BRAMBLETT ACCESS ROAD

VERT.
1" = 10'
HORIZ.
1" = 50'
SCALE:

**BELLEAU
CROSSING
STREET**

ST. CHARLES ENGINEERING & SURVEYING, INC.
 801 S. FIFTH STREET, SUITE 202
 ST. CHARLES, MO 63301
 TEL: (636) 947-0607 FAX: (636) 947-2448



ORDER NO.
04-1419-01
 DATE
12/05/07
C-9