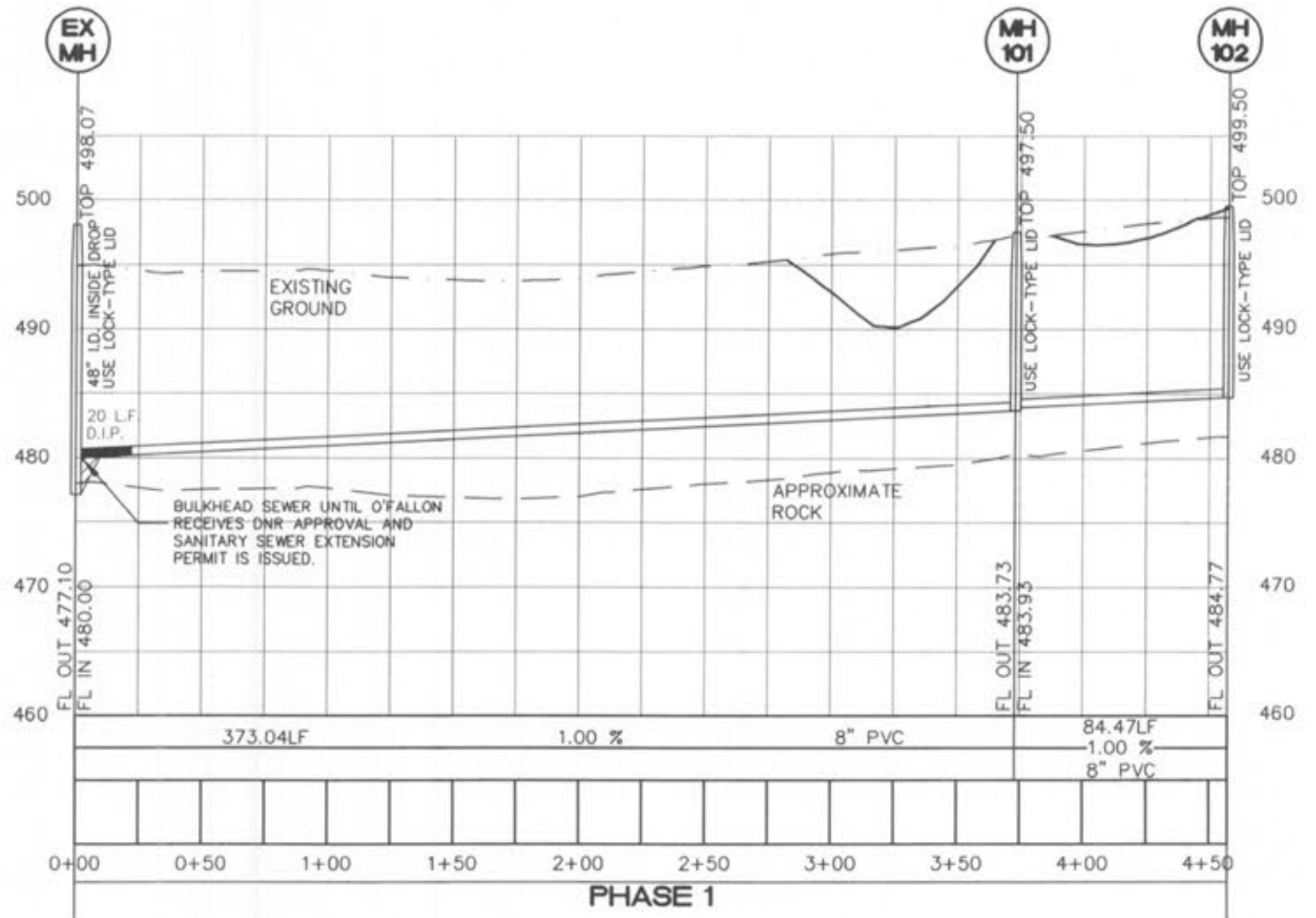
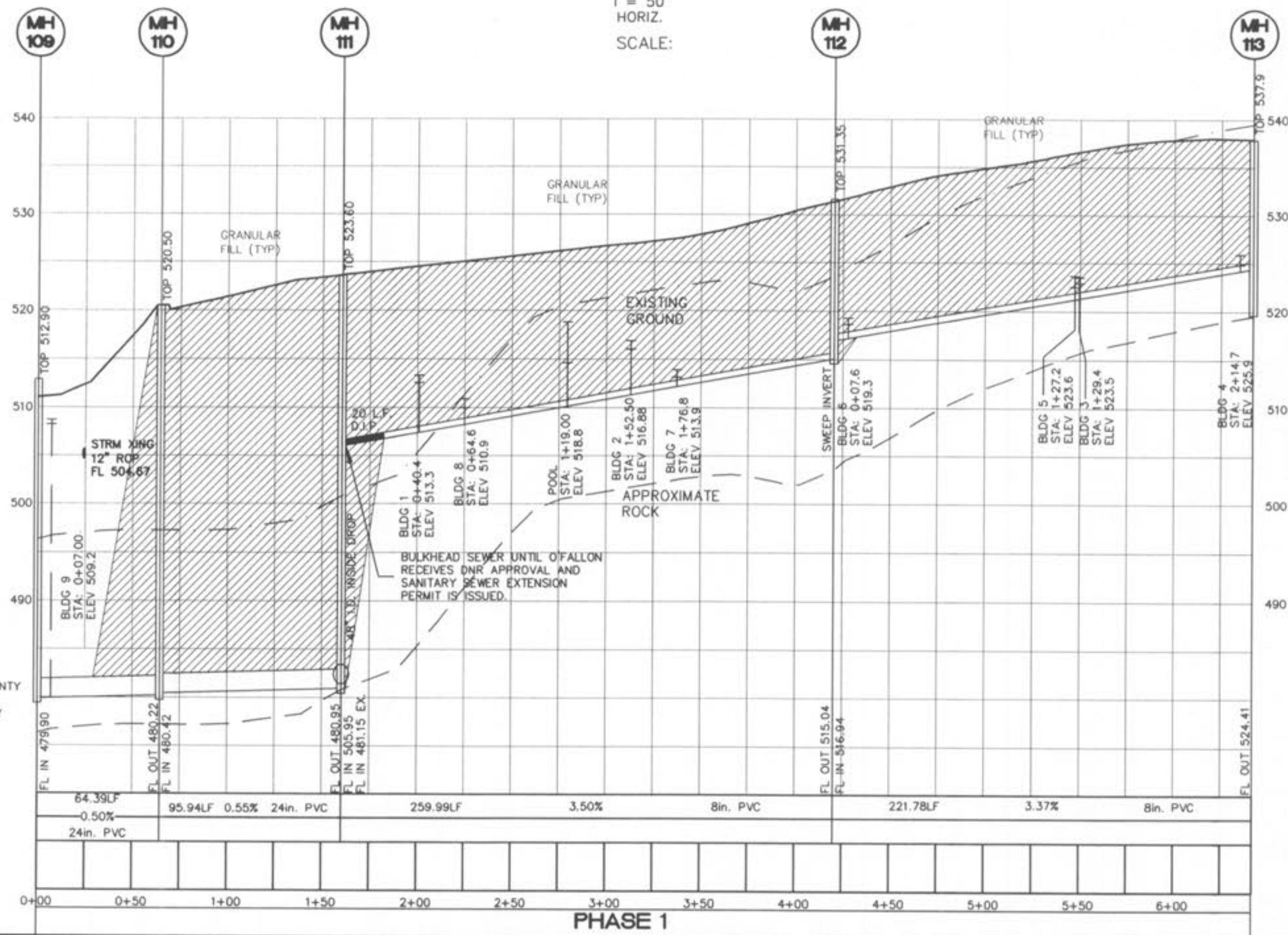
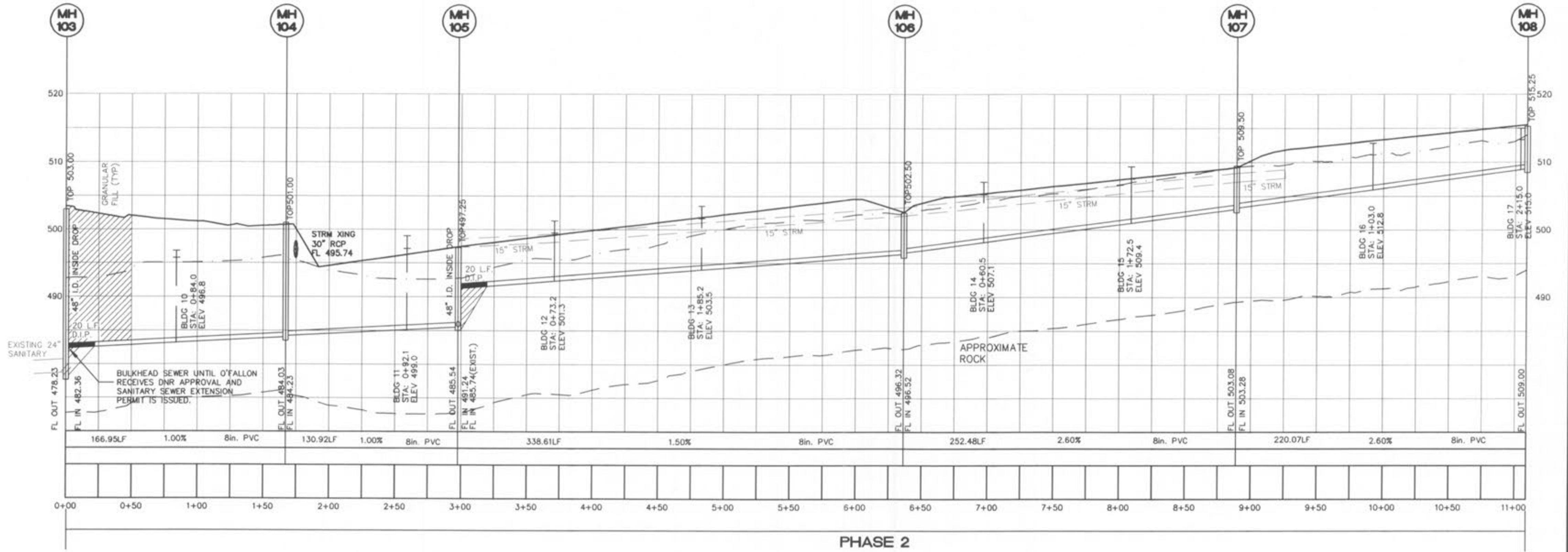


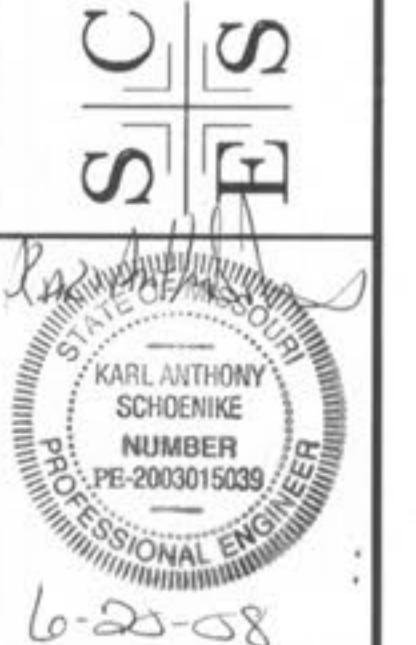
**SANITARY NOTES:**

1. A minimum of 6" diameter pipe shall be used for sanitary laterals.
2. A minimum of 8" diameter pipe shall be used for sanitary sewers.
3. Sewer grease traps and cleanouts required on sanitary laterals as shown.
4. Inside drop manholes must be a minimum of 48" in diameter.
5. Sanitary sewer line placement shall be a minimum of 10' from any proposed structures.
6. All manholes are to have a minimum 0.20' drop across the structure.
7. For drop structures, compacted rock backfill is required in the disturbed ground around the structure.
8. A concrete cradle for RCP and encasement for HDPE will be required for all storm sewer lines when crossing less than 18" above the sanitary lines.



**BELLEAU  
CROSSING  
SANITARY**

ST. CHARLES ENGINEERING & SURVEYING, INC.  
801 S. FIFTH STREET, SUITE 202  
ST. CHARLES, MO 63301  
TEL: (636) 947-0607 FAX: (636) 947-2448



6-22-08  
ORDER NO.  
04-1419-01  
DATE

C-14

O'FALLON P+Z NO. 3805.05  
APPROVED AUGUST 16, 2007

I:\041419\dwg\041419.dwg 06/20/08-4:14pm

07/18/08 REVISED BID SET  
02/19/08 REVISED PER CITY COMMENTS