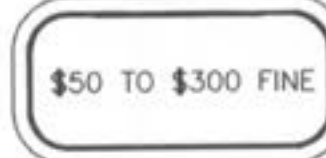


**HANDICAP SIGN**



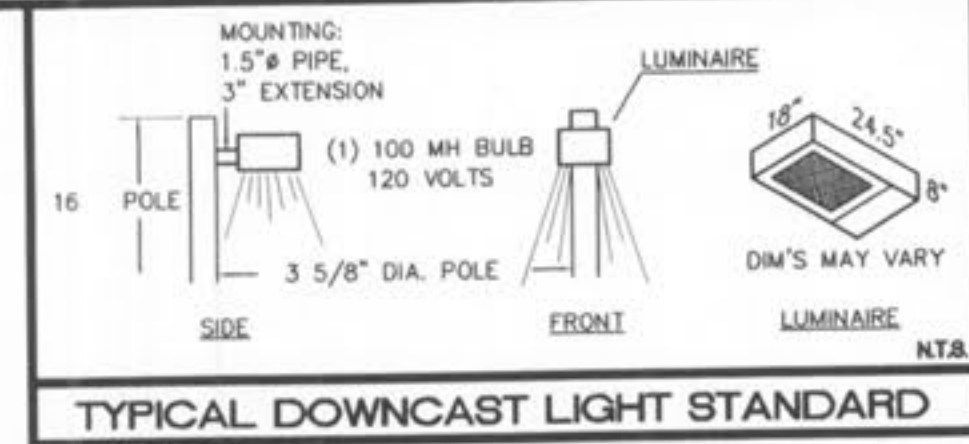
12" X 18" SIGN



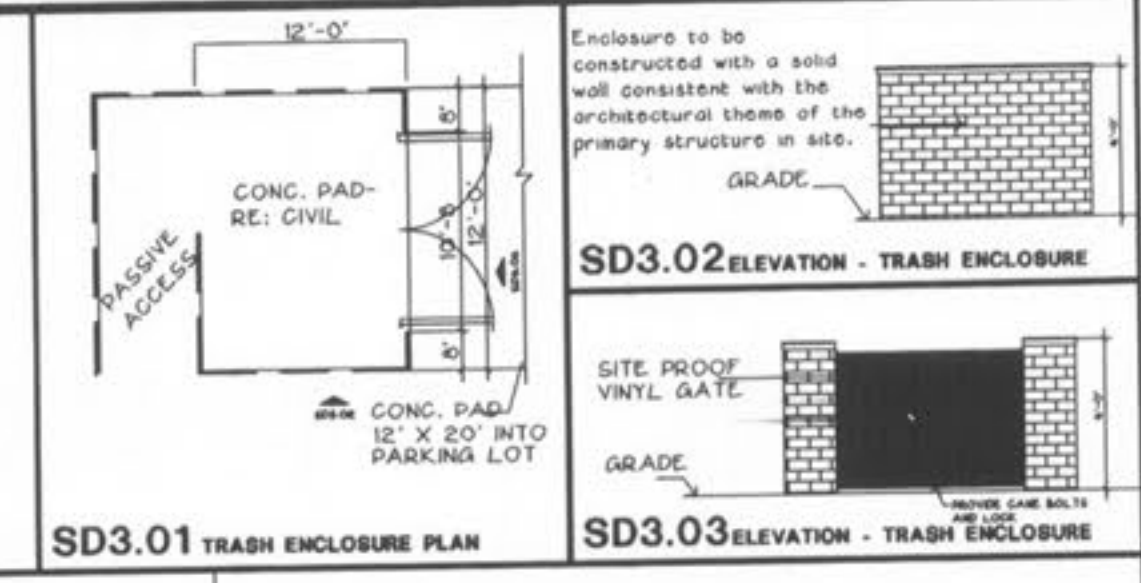
12" X 6" SIGN

STANDARD SIGN FACE, STANDARD HIGHWAY DEPARTMENT, OR CITY STREET DEPARTMENT GAUGE, BLACK OR BLUE LETTERING, GALVANIZED U CHANNEL POST 7'-0" LONG, SET 3'-0" INTO GRADE, SET BOTTOM OF SIGN 4'-0" ABOVE FINISHED GRADE

**HANDICAP PARKING SIGN**



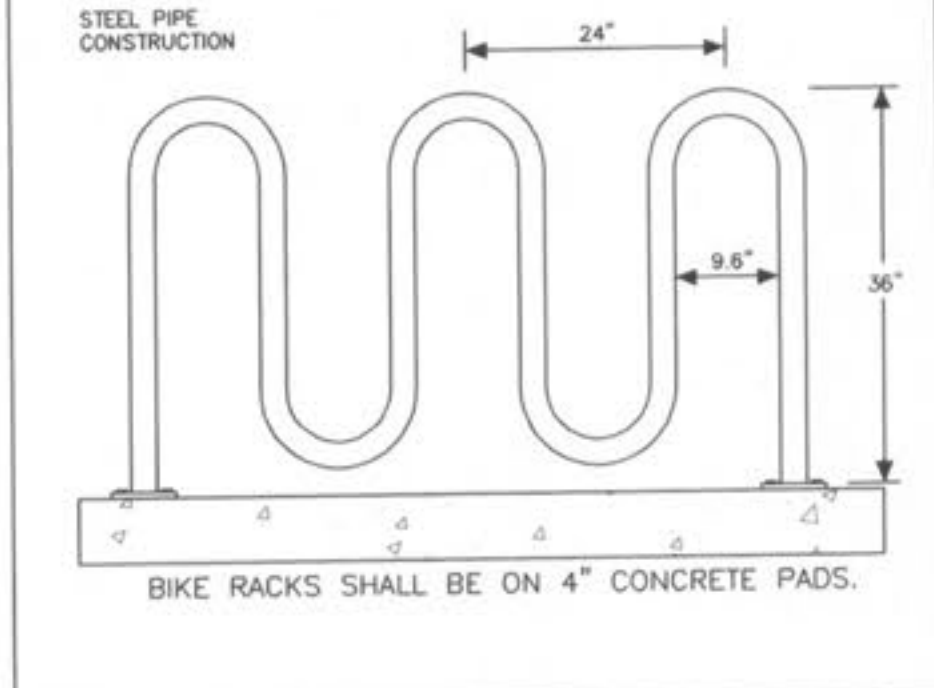
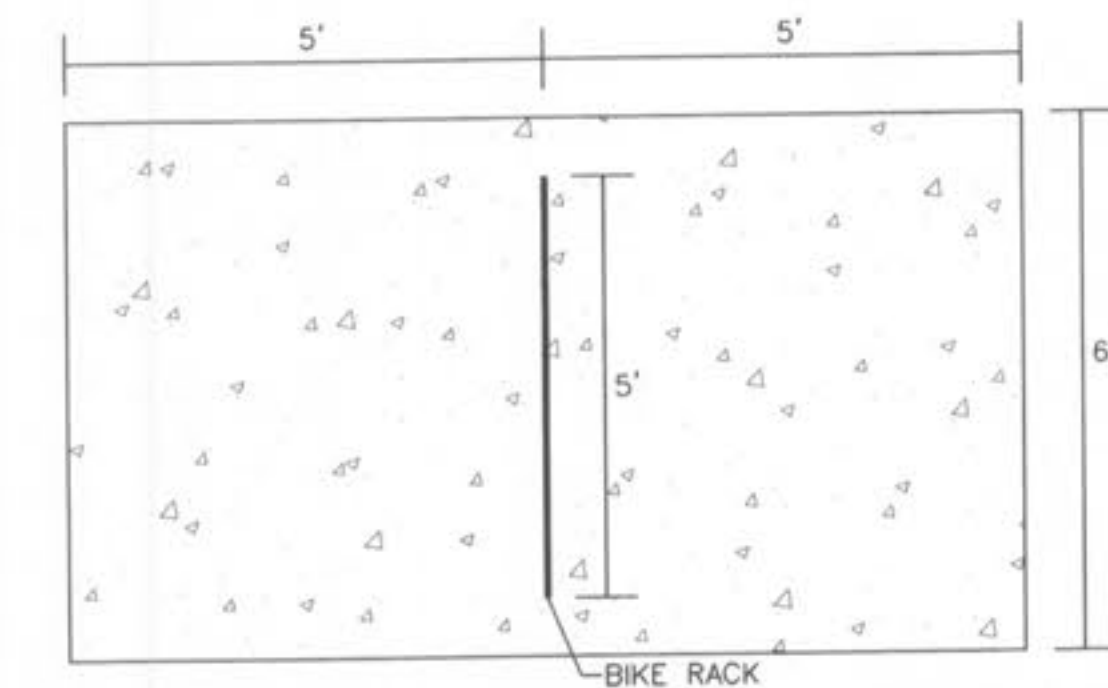
**TYPICAL DOWNCAST LIGHT STANDARD**



**SD3.01 TRASH ENCLOSURE PLAN**

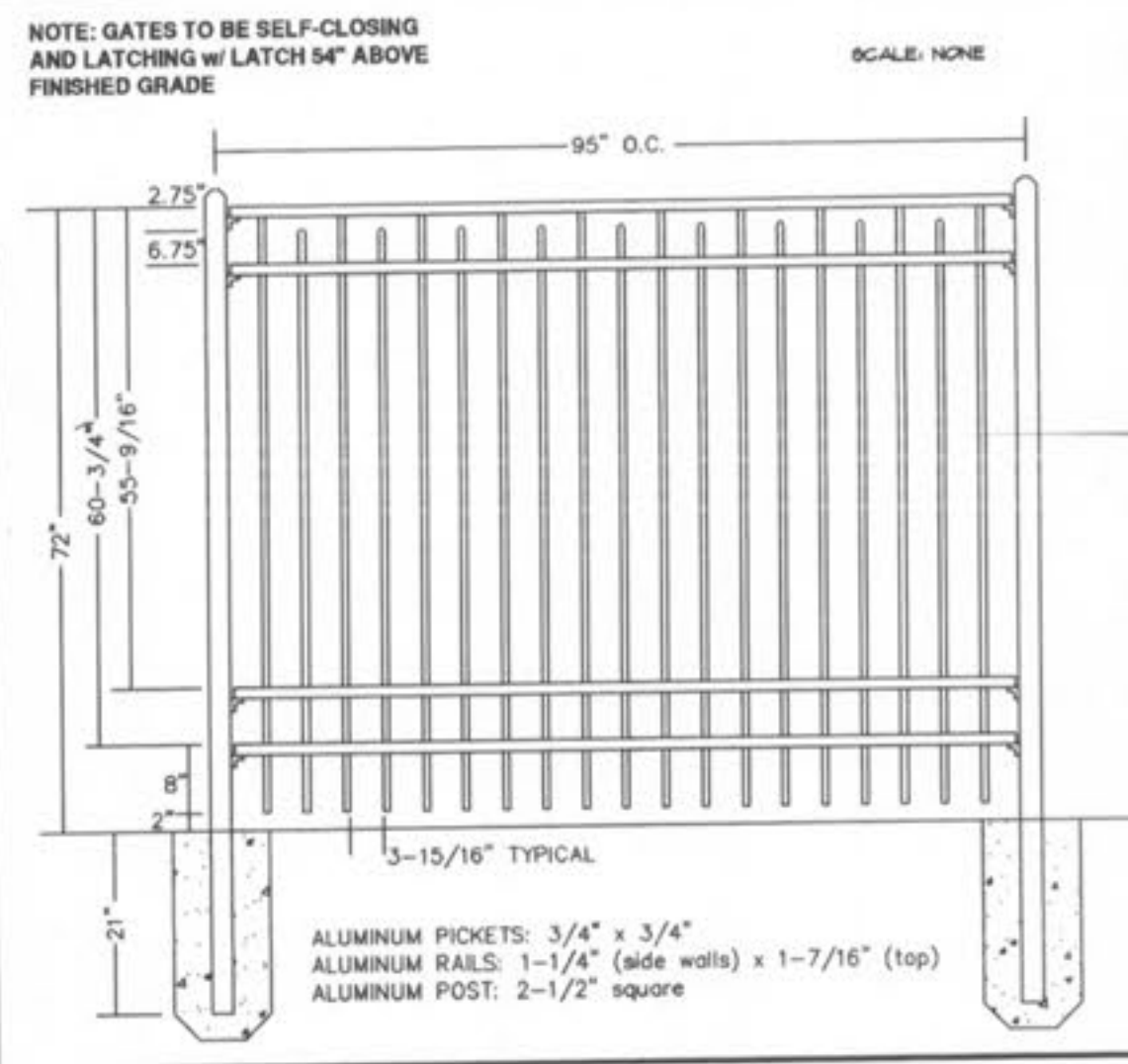
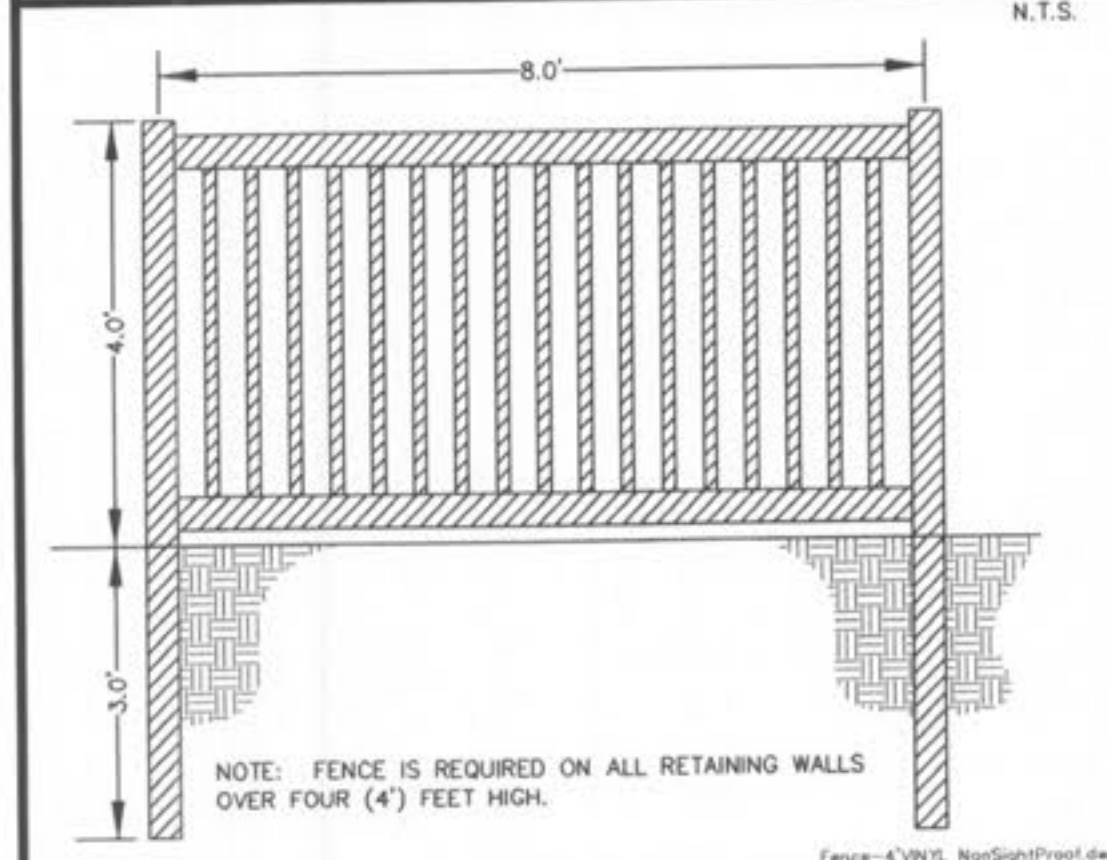
**SD3.02 ELEVATION - TRASH ENCLOSURE**

**SD3.03 ELEVATION - TRASH ENCLOSURE**



**BICYCLE RACK DETAIL**

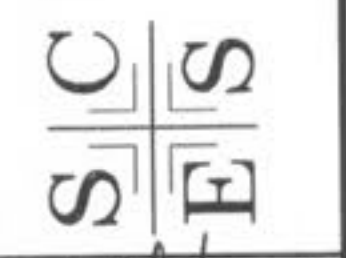
**TYPICAL 4' HIGH NON SIGHT-PROOF WHITE VINYL FENCE**



**CONQUEROR 4-RAIL POOL FENCE DETAIL**

**SITE DETAILS  
BELLEAU CROSSING**

ST. CHARLES ENGINEERING & SURVEYING, INC.  
801 S. FIFTH STREET, SUITE 202  
ST. CHARLES, MO 63301  
TEL: (636) 947-0607 FAX: (636) 947-2448



8-20-08

ORDER NO.

04-1419-01

DATE

11/15/07

D-7