

GENERAL NOTES

1. Do not scale drawing. Follow dimensions.
2. Sidewalk and sidewalk curb ramps shall be constructed in accordance with these details and the current approved Americans with Disabilities Act Accessibility Guidelines (ADAAG).
3. Provide a landing at the top of each straight ramp when the Grade Along Curb (G.A.C.) is greater than +2.01 and less than +3.01. For other values of G.A.C., including all negative (-) values, no landing is required.
4. Minimum sidewalk width along 6\"/>

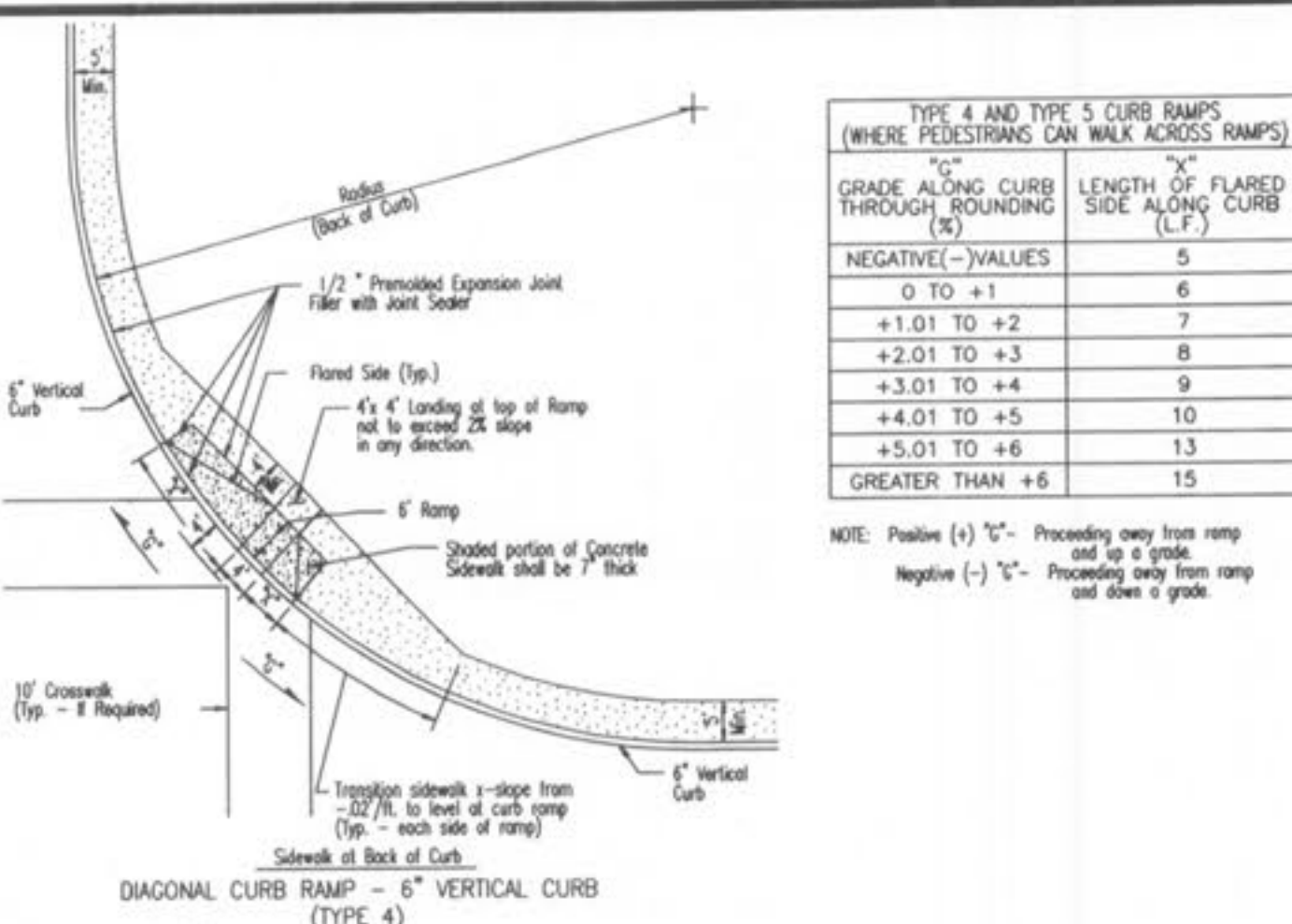
TYPE 1 AND TYPE 2 CURB RAMPS

G.A.C. ALONG CURB (%)	MIN. LENGTH OF RAMP SLOPE (L.F.)
NEGATIVE (-) VALUES	6
0 TO +1	7
+1.01 TO +2	8
+2.01 TO +3	10
+3.01 TO +4	12
GREATER THAN +4	15

TYPE 3 CURB RAMP

G.A.C. ALONG CURB (%)	MIN. LENGTH OF RAMP SLOPE (L.F.)
NEGATIVE (-) VALUES	3
0 TO +2	4
+2.01 TO +3	5
+3.01 TO +4	6
+4.01 TO +5	8
+5.01 TO +6	11
GREATER THAN +6	15

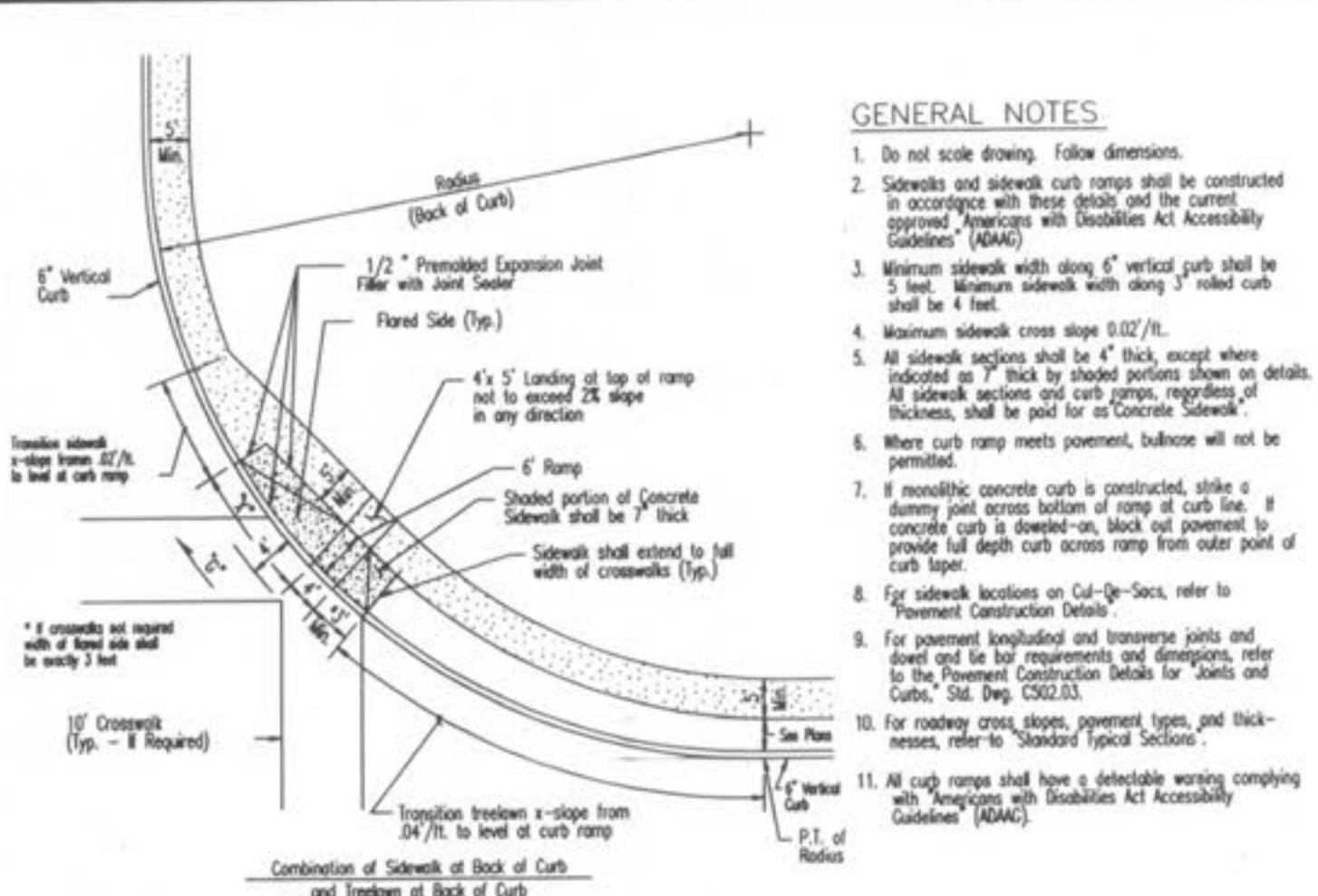
SAINT CHARLES COUNTY
HIGHWAY DEPARTMENT
ST. CHARLES, MISSOURI
PAVEMENT CONSTRUCTION DETAILS
CONCRETE SIDEWALK AND CURB RAMPS
DATE: June, 2002 DRAWING C608.10



TYPE 4 AND TYPE 5 CURB RAMPS (WHERE PEDESTRIANS CAN WALK ACROSS RAMPS)

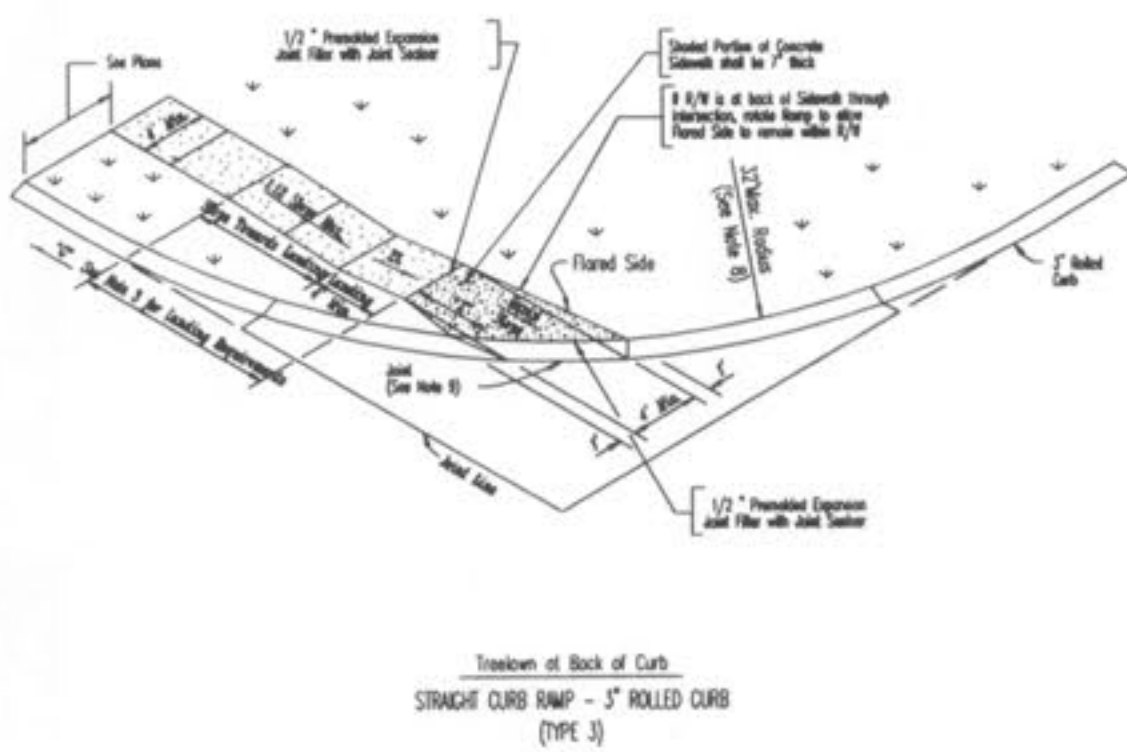
GRADE ALONG CURB THROUGH ROUNDING (%)	LENGTH OF FLARED SIDE ALONG CURB (L.F.)
NEGATIVE (-) VALUES	6
0 TO +1	7
+1.01 TO +2	8
+2.01 TO +3	9
+3.01 TO +4	10
+4.01 TO +5	13
GREATER THAN +6	15

NOTE: Positive (+) "G" - Proceeding away from ramp and up a grade.
Negative (-) "G" - Proceeding away from ramp and down a grade.

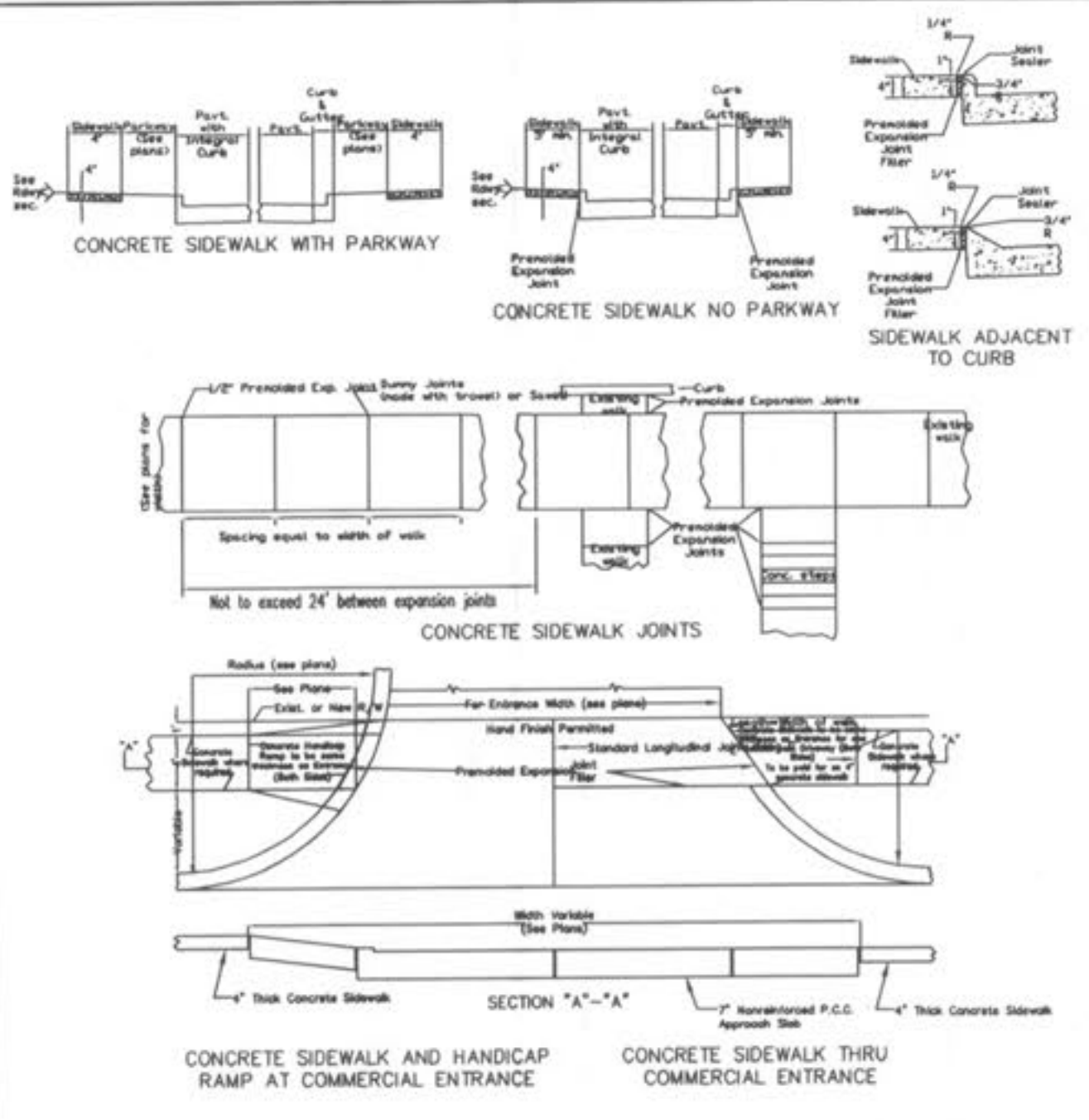


GENERAL NOTES

1. Do not scale drawing. Follow dimensions.
2. Sidewalk and sidewalk curb ramps shall be constructed in accordance with these details and the current approved Americans with Disabilities Act Accessibility Guidelines (ADAAG).
3. Minimum sidewalk width along 6\"/>



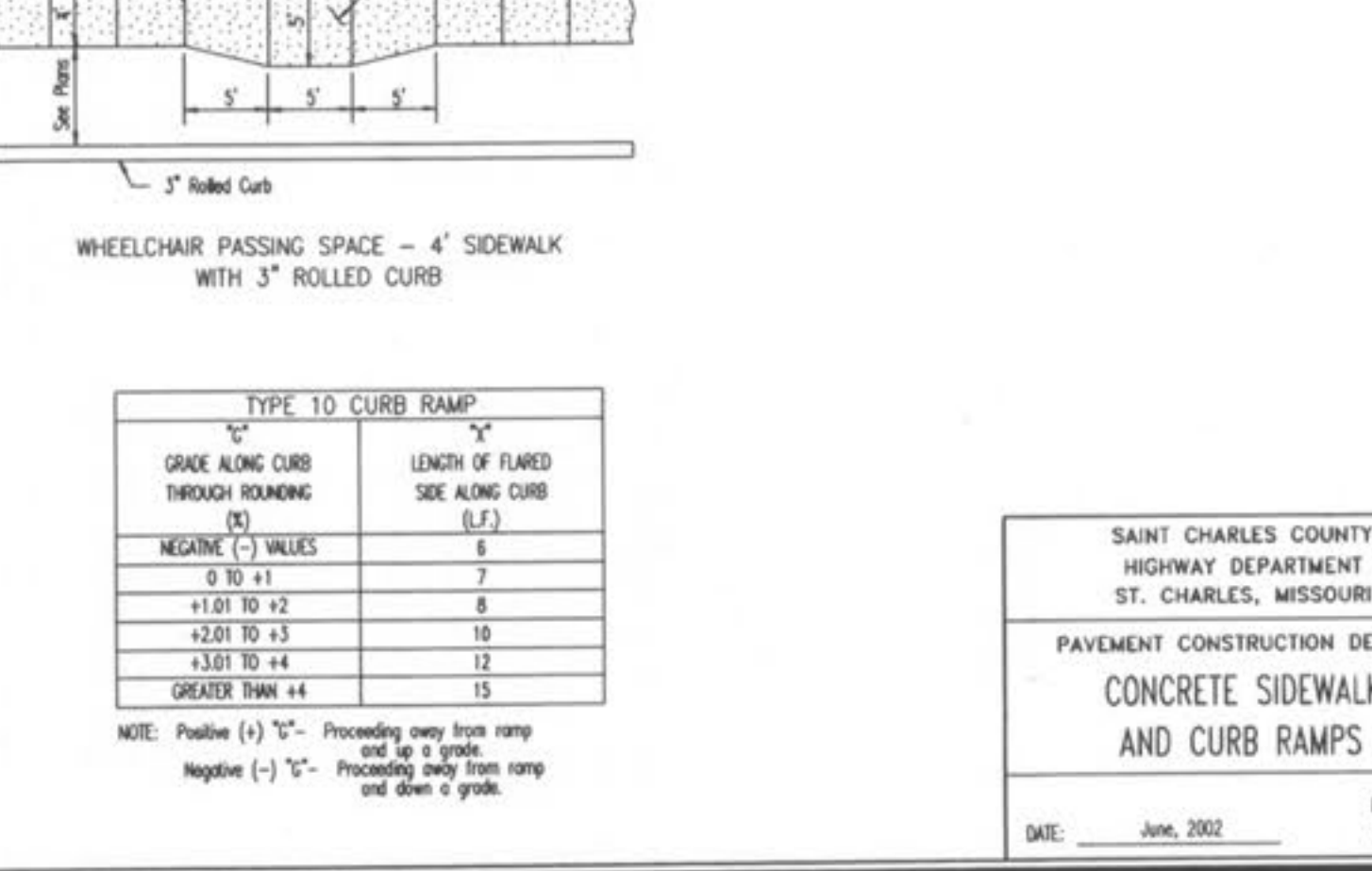
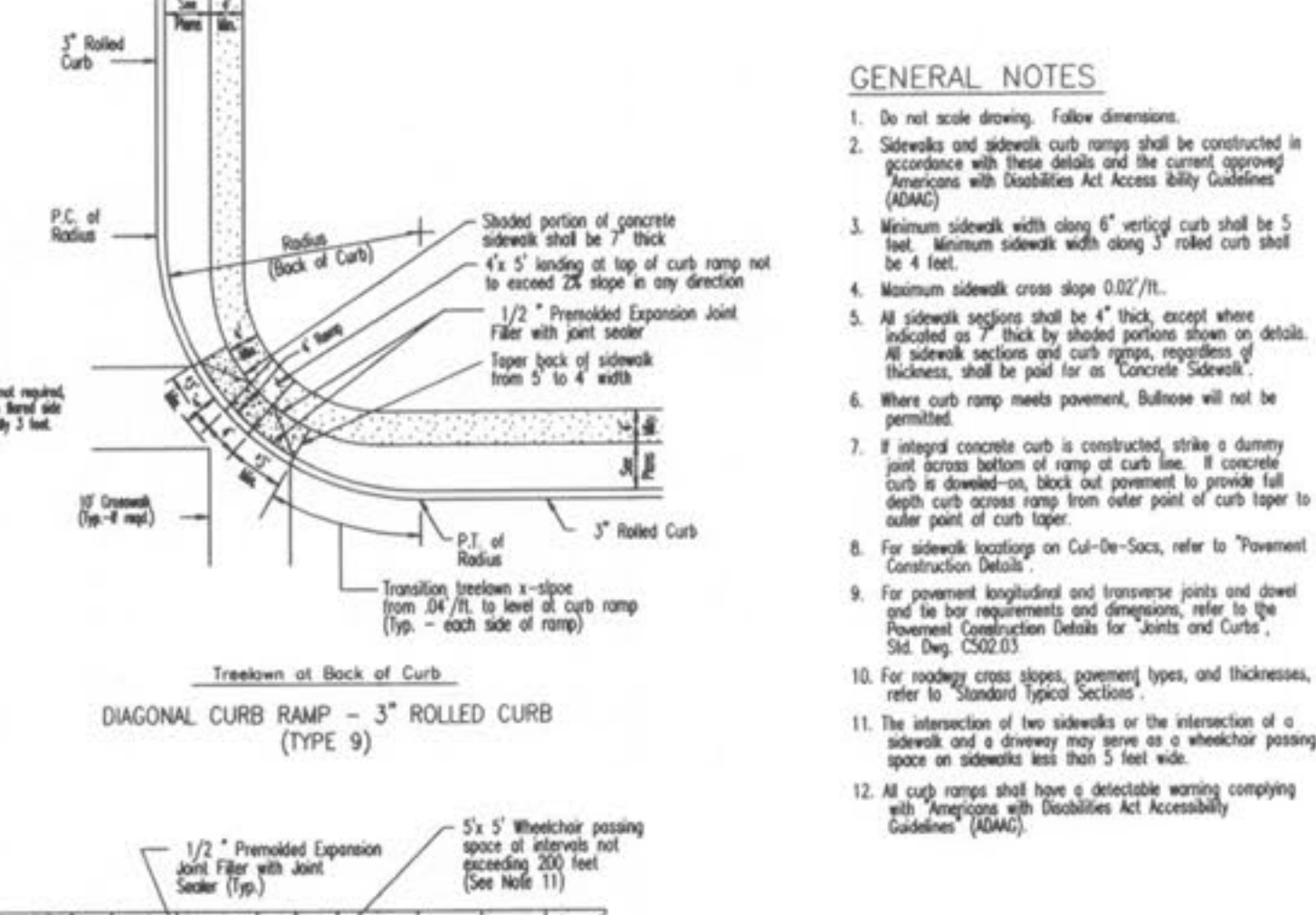
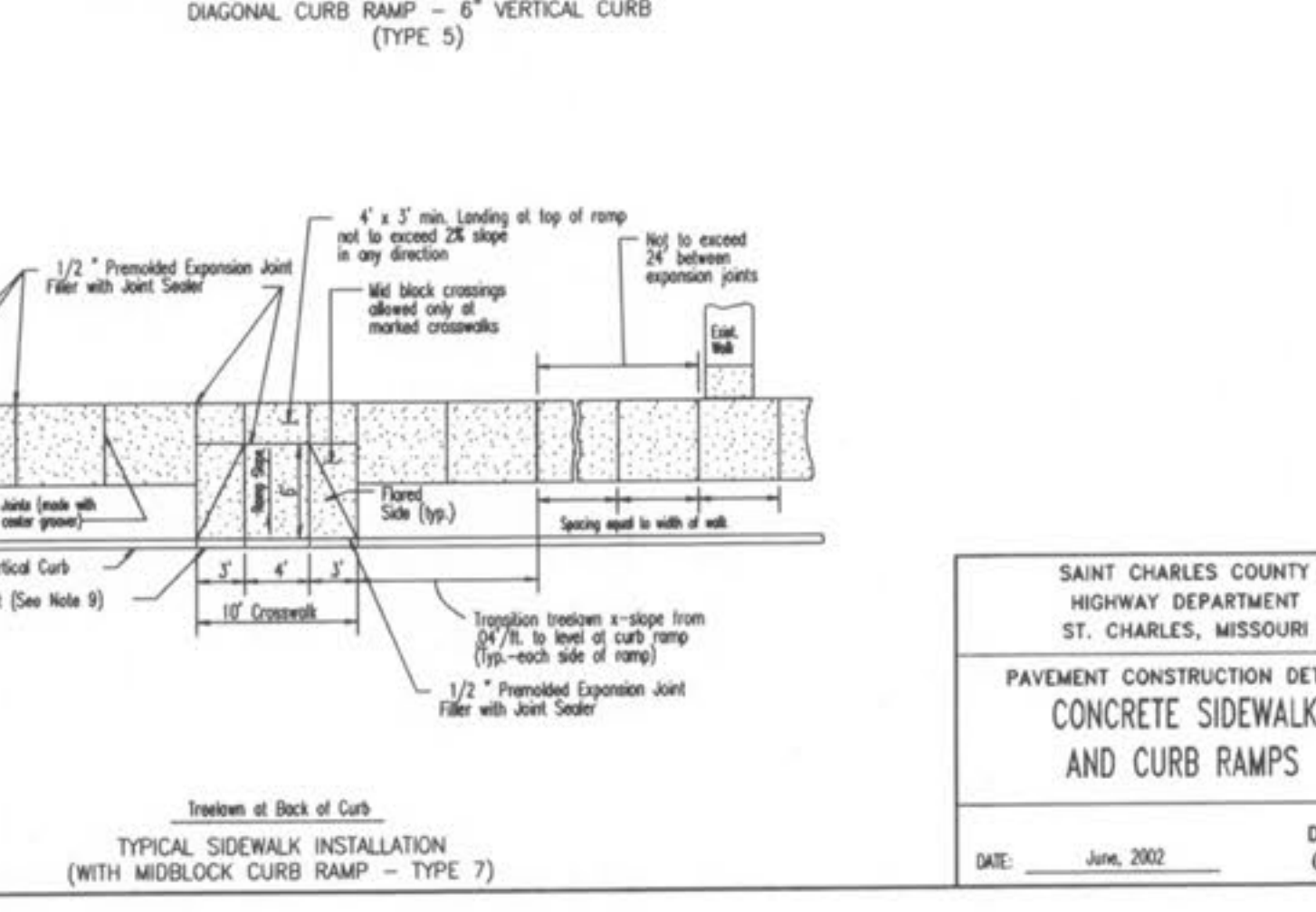
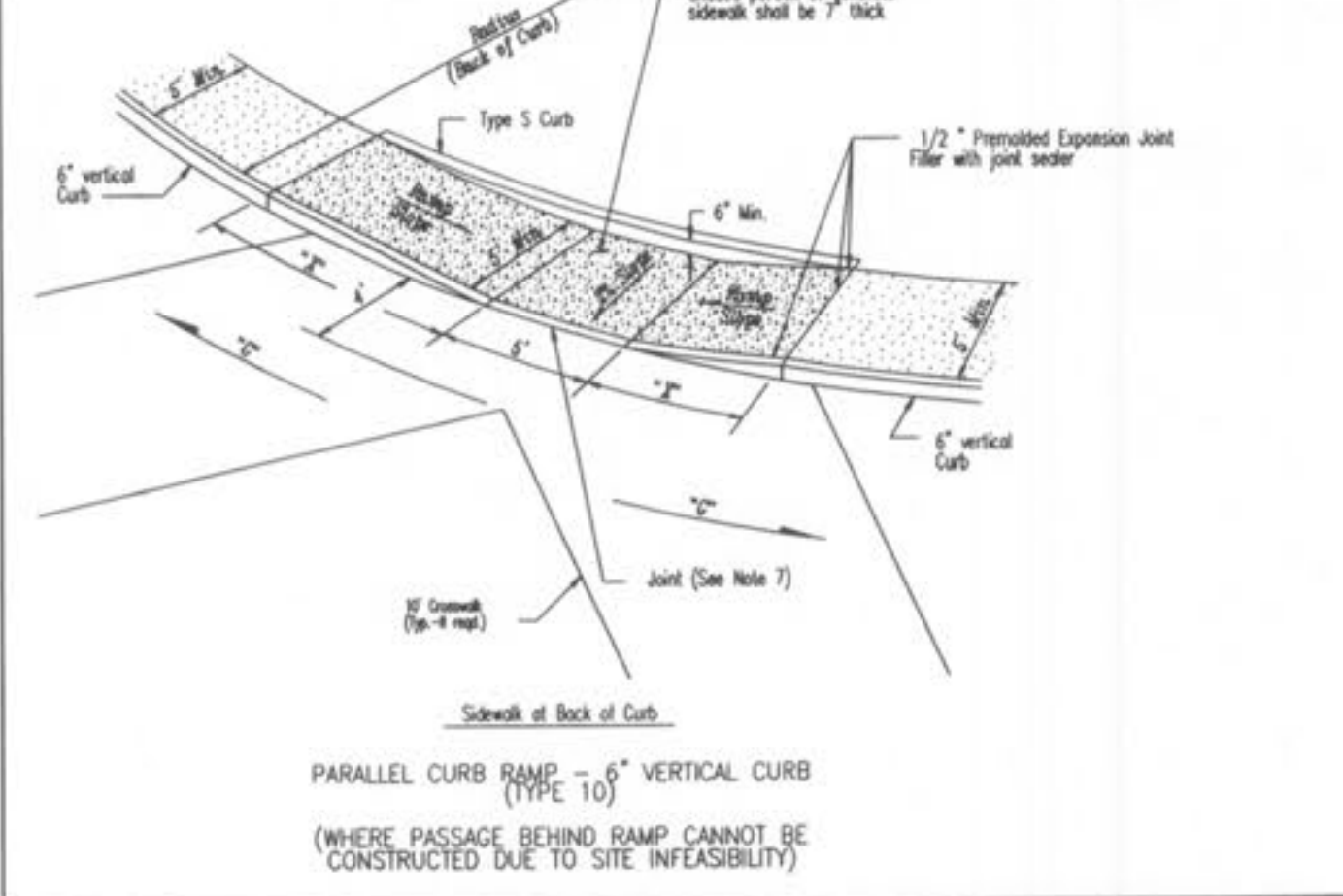
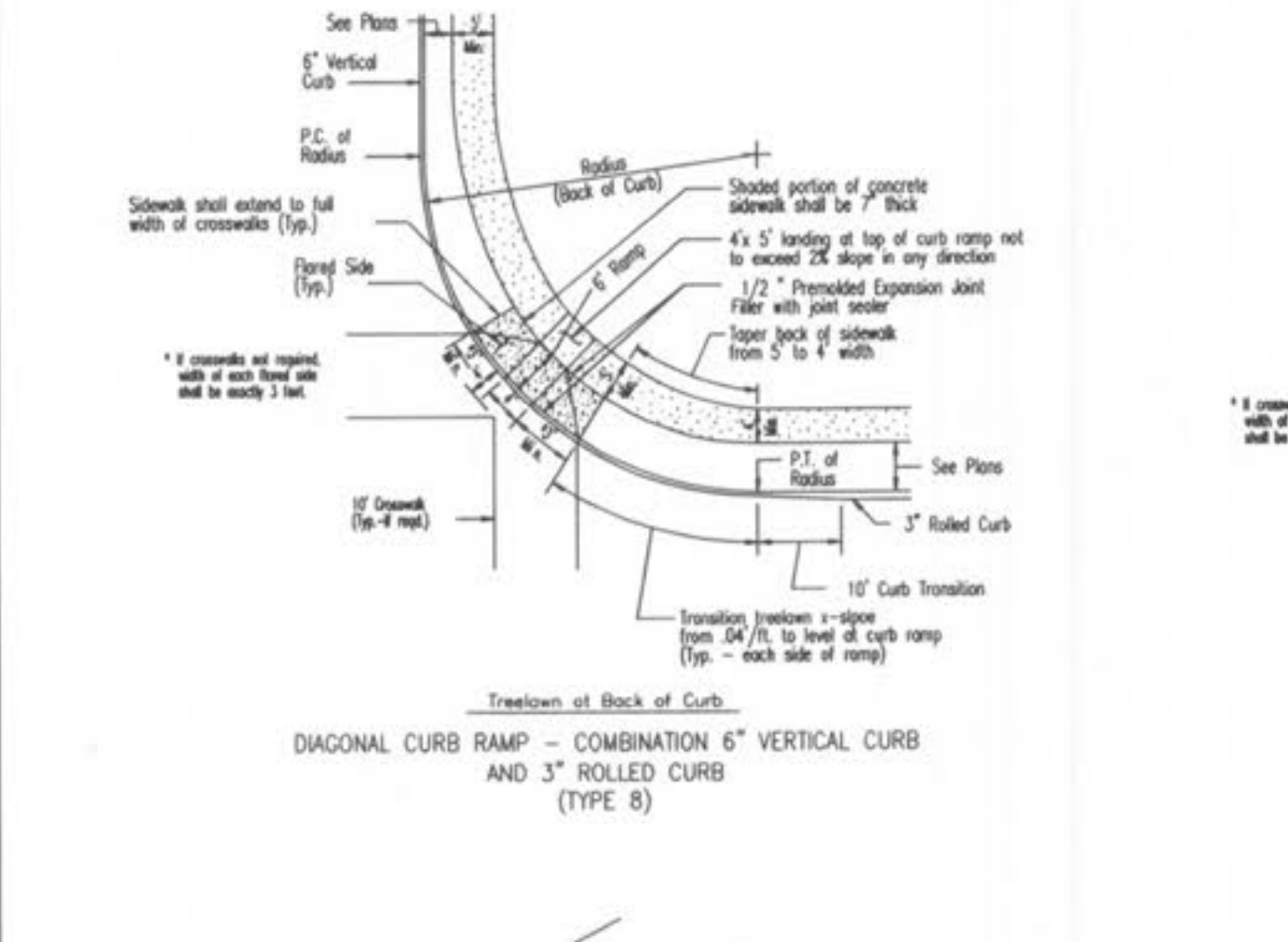
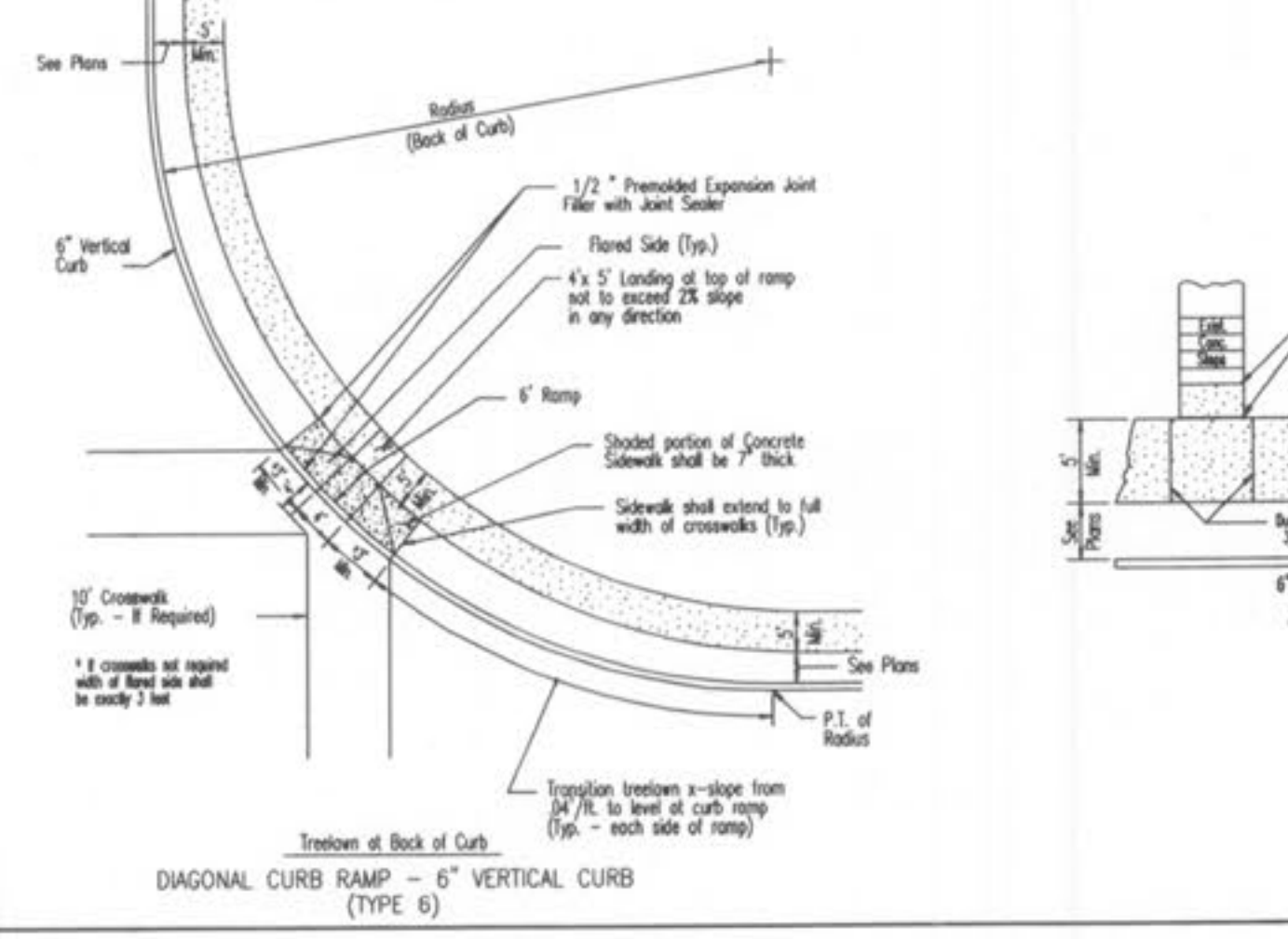
TRUNCATED DOMES
ALL CURB RAMPS SHALL HAVE TRUNCATED DOMES IN ACCORDANCE WITH ADAAG.



GENERAL NOTES

1. Do not scale drawing. Follow dimensions.
2. Sidewalk cross slope 0.02%/ft.
3. Sidewalk thickness increases to 6\"/>

SAINT CHARLES COUNTY
HIGHWAY DEPARTMENT
ST. CHARLES, MISSOURI
CONCRETE SIDEWALK
DATE: October, 2002 DRAWING C608.14



TYPE 10 CURB RAMP

GRADE ALONG CURB THROUGH ROUNDING (%)	LENGTH OF FLARED SIDE ALONG CURB (L.F.)
NEGATIVE (-) VALUES	6
0 TO +1	7
+1.01 TO +2	8
+2.01 TO +3	10
+3.01 TO +4	12
GREATER THAN +4	15

NOTE: Positive (+) "G" - Proceeding away from ramp and up a grade.
Negative (-) "G" - Proceeding away from ramp and down a grade.

GENERAL NOTES

1. Do not scale drawing. Follow dimensions.
2. Sidewalk and sidewalk curb ramps shall be constructed in accordance with these details and the current approved Americans with Disabilities Act Accessibility Guidelines (ADAAG).
3. Minimum sidewalk width along 6\"/>

SAINT CHARLES COUNTY
HIGHWAY DEPARTMENT
ST. CHARLES, MISSOURI
PAVEMENT CONSTRUCTION DETAILS
CONCRETE SIDEWALK AND CURB RAMPS
DATE: June, 2002 DRAWING C608.11

SAINT CHARLES COUNTY
HIGHWAY DEPARTMENT
ST. CHARLES, MISSOURI
PAVEMENT CONSTRUCTION DETAILS
CONCRETE SIDEWALK AND CURB RAMPS
DATE: June, 2002 DRAWING C608.12

**IMPROVEMENT PLANS
BELLEAU CROSSING
SIDEWALK DETAILS**

ST. CHARLES ENGINEERING & SURVEYING, INC.
801 S. FIFTH STREET, SUITE 202
ST. CHARLES, MO 63301
TEL: (636) 947-0607 FAX: (636) 947-2448



2-18-08
ORDER NO. 04-1419-01
DATE 10/26/07
D-9