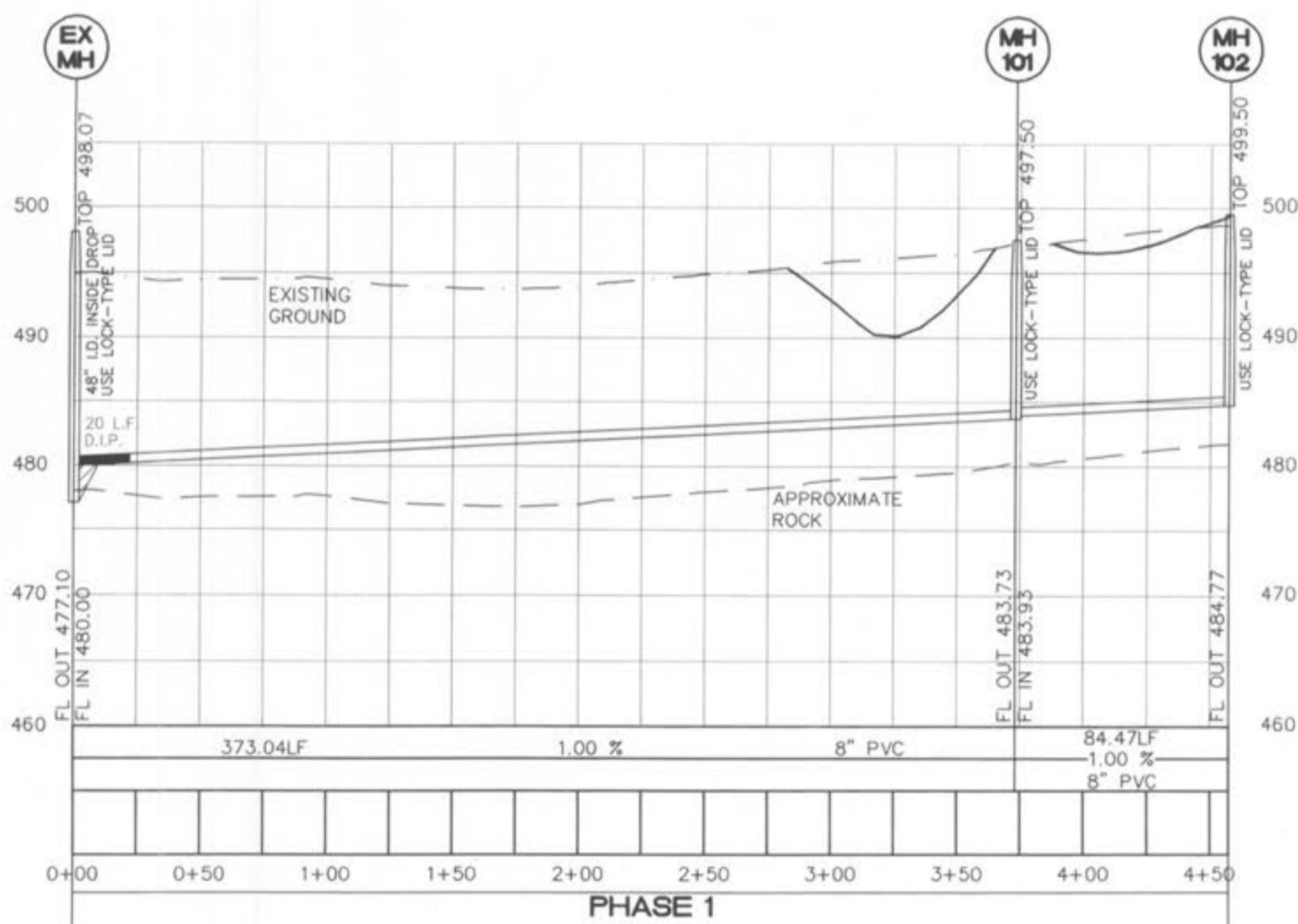
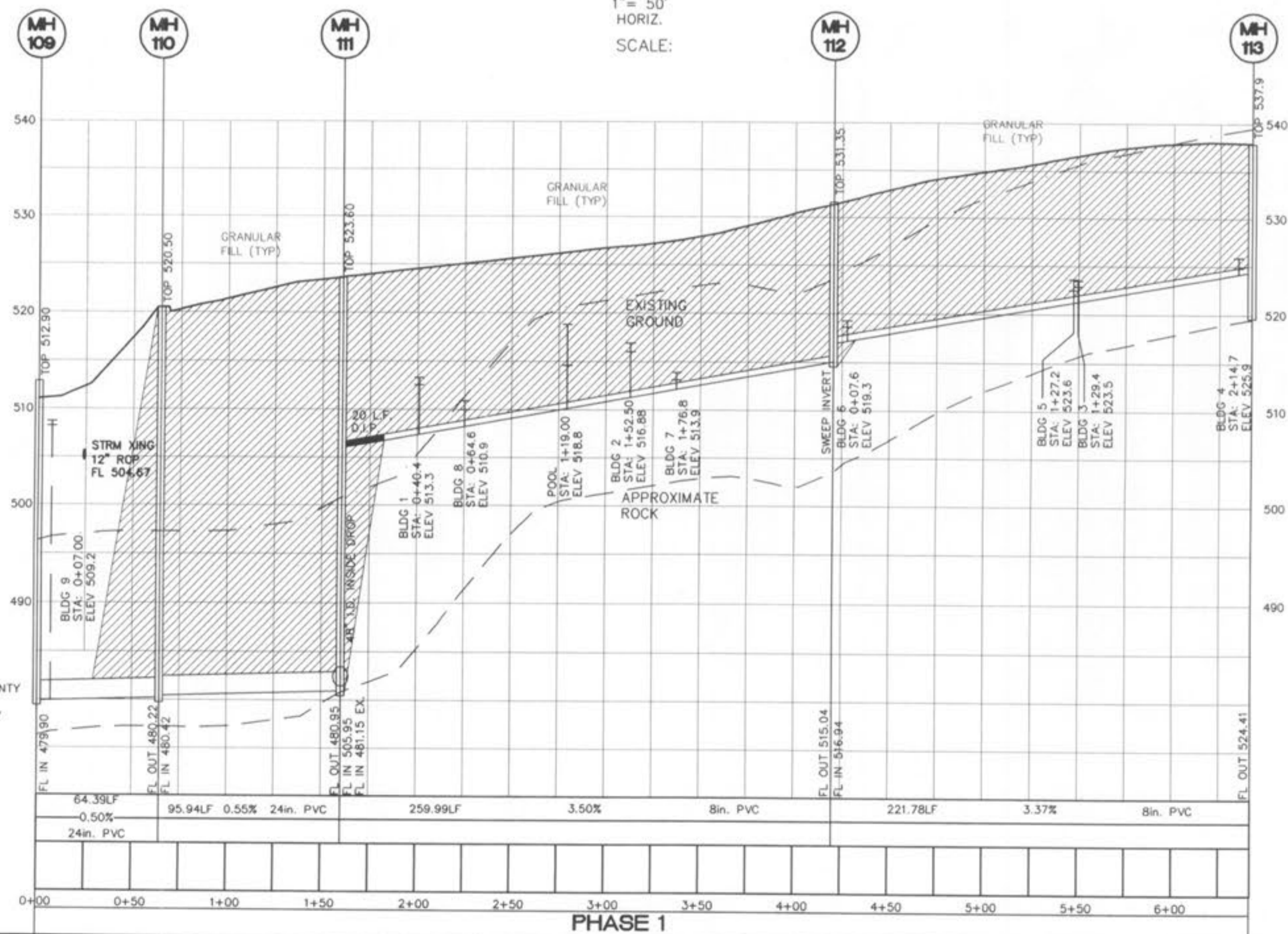
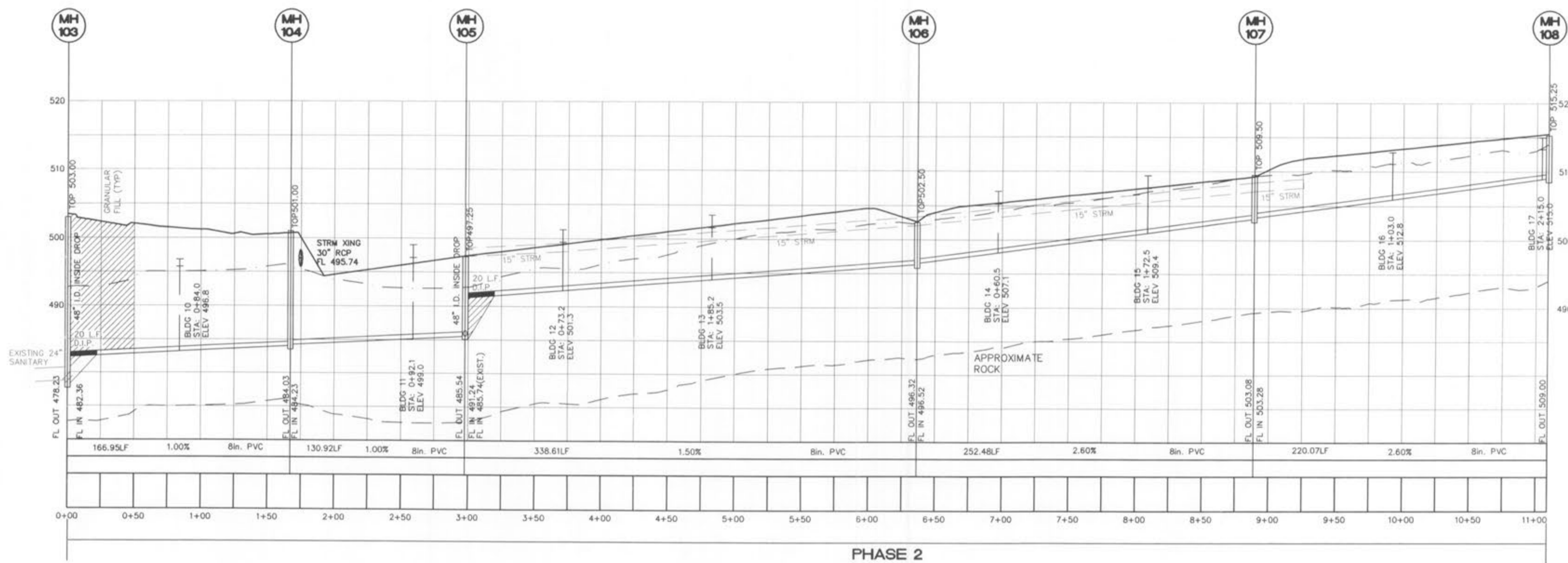


SANITARY NOTES:

1. A minimum of 6" diameter pipe shall be used for sanitary laterals.
2. A minimum of 8" diameter pipe shall be used for sanitary sewers.
3. Sewer grease traps and cleanouts required on sanitary laterals as shown.
4. Inside drop manholes must be a minimum of 48" in diameter.
5. Sanitary sewer line placement shall be a minimum of 10' from any proposed structures.
6. All manholes are to have a minimum 0.20' drop across the structure.
7. For drop structures, compacted rock backfill is required in the disturbed ground around the structure.
8. A concrete cradle for RCP and encasement for HDPE will be required for all storm sewer lines when crossing less than 16" above the sanitary lines.



**BELLEAU
CROSSING
SANITARY**

ST. CHARLES ENGINEERING & SURVEYING, INC.
801 S. FIFTH STREET, SUITE 202
ST. CHARLES, MO 63301
TEL: (636) 947-0607 FAX: (636) 947-2448



ORDER NO.
04-1419-01
DATE

C-4