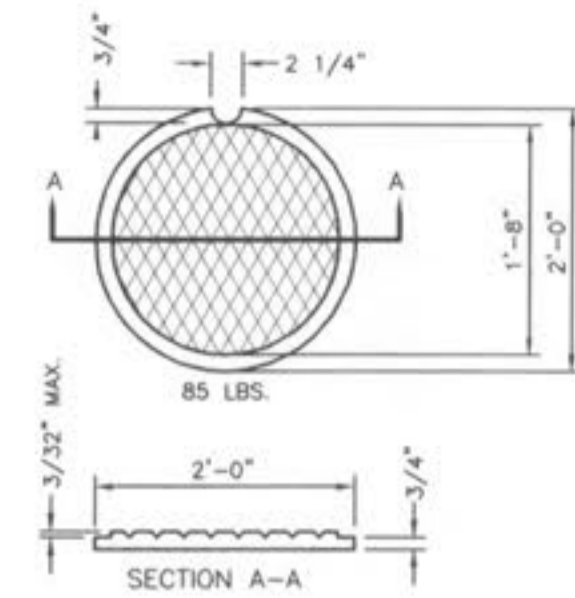
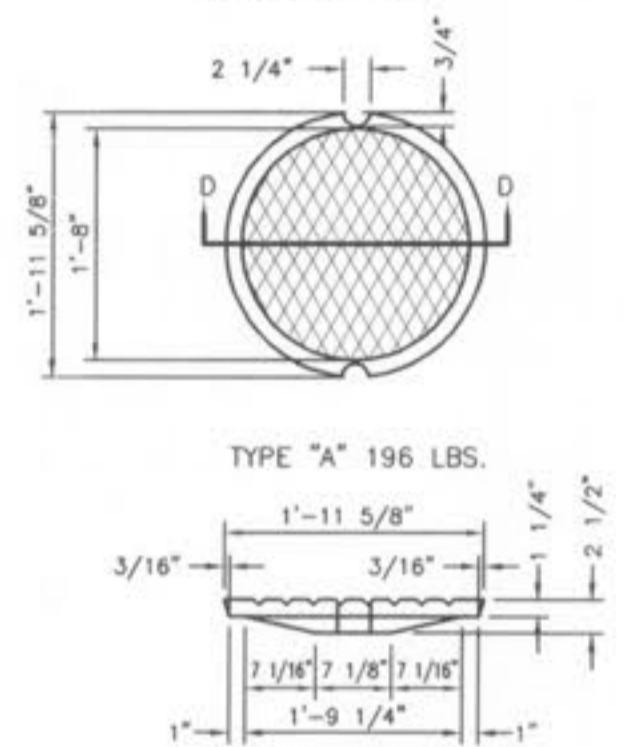


CAST IRON MANHOLE COVERS (LOCK TYPE)

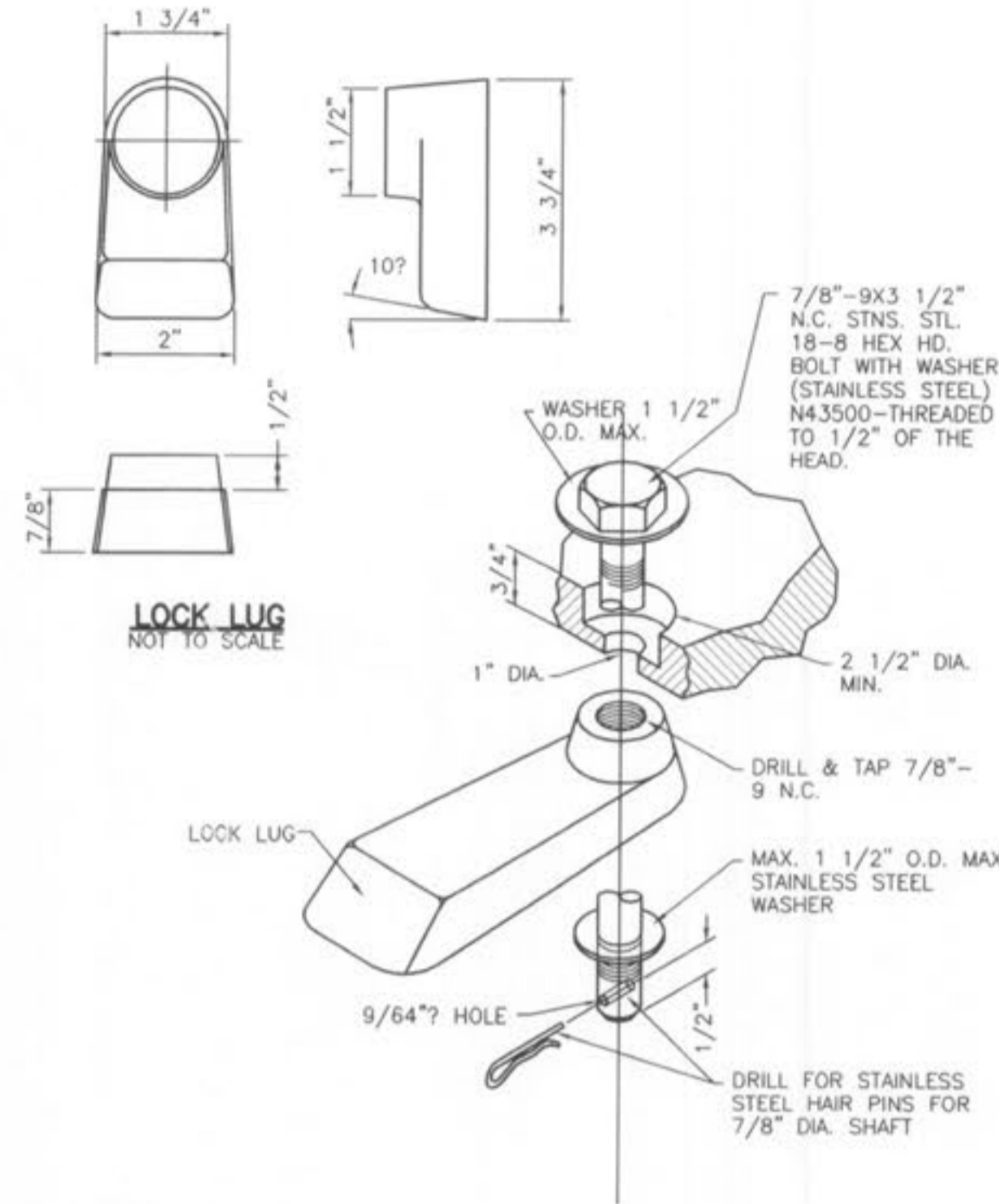


NOTE A: MACHINE CONTACTING SURFACES FOR SEAT OF STANDARD MANHOLE FRAME AND BEARING SURFACE OF COVERS.

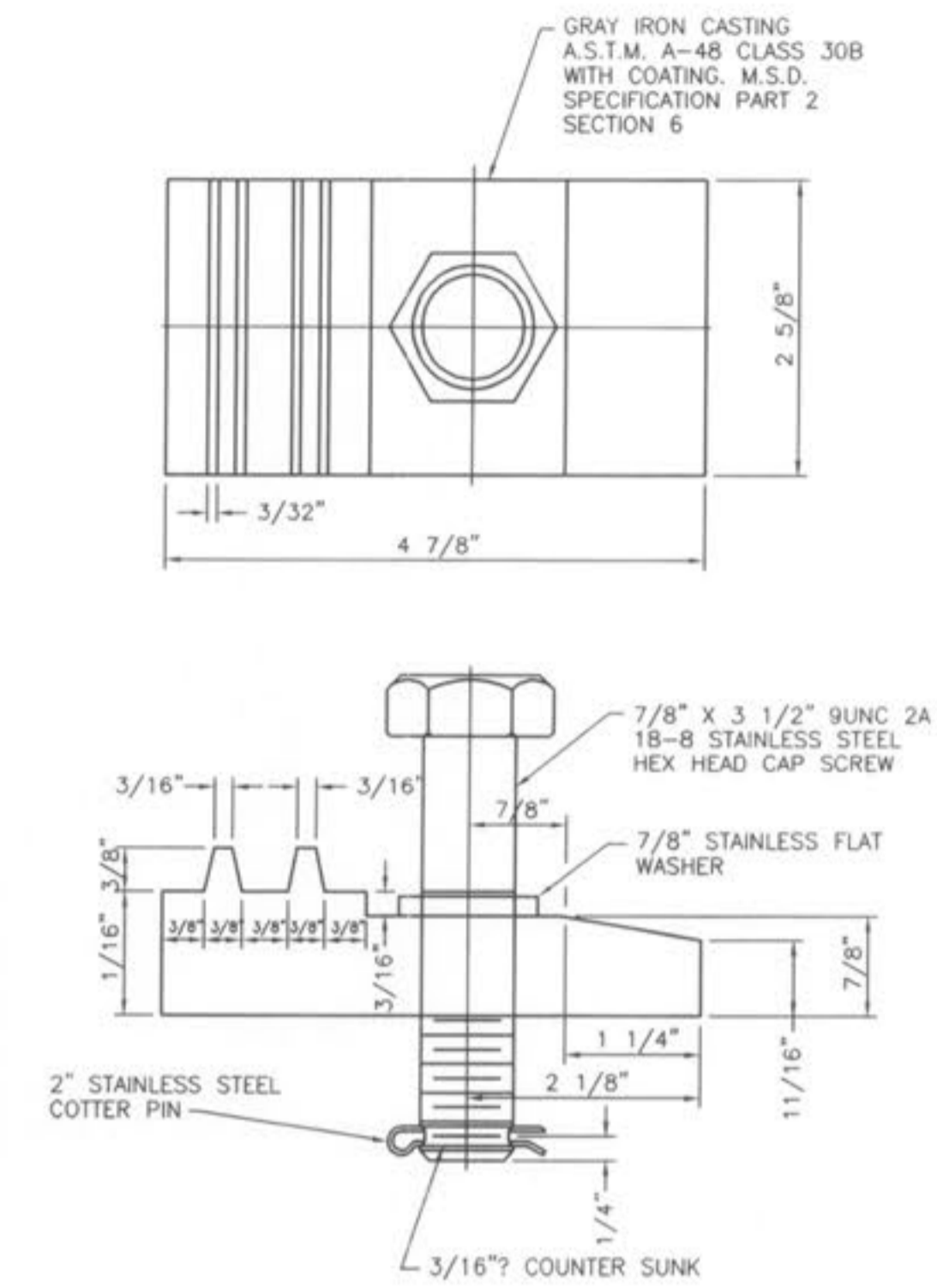
NOTE B: PROVIDE 1/8" RAISED LETTERING APPROXIMATELY 3/4" TO 1" HIGH.



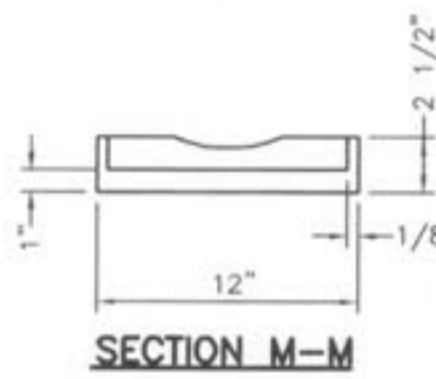
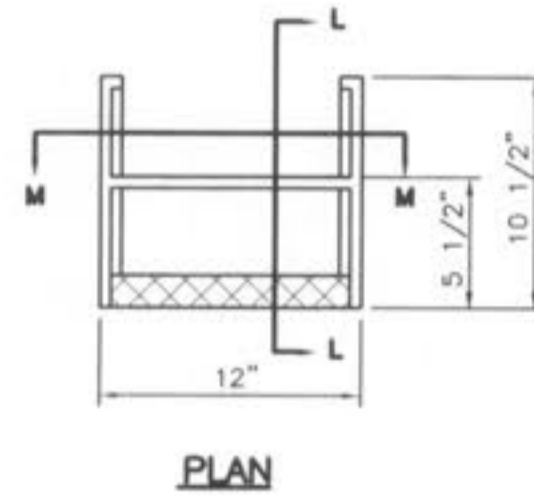
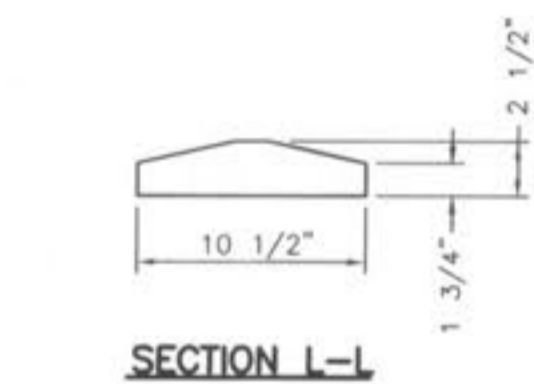
CAST IRON COVERS MANHOLES AND INLETS



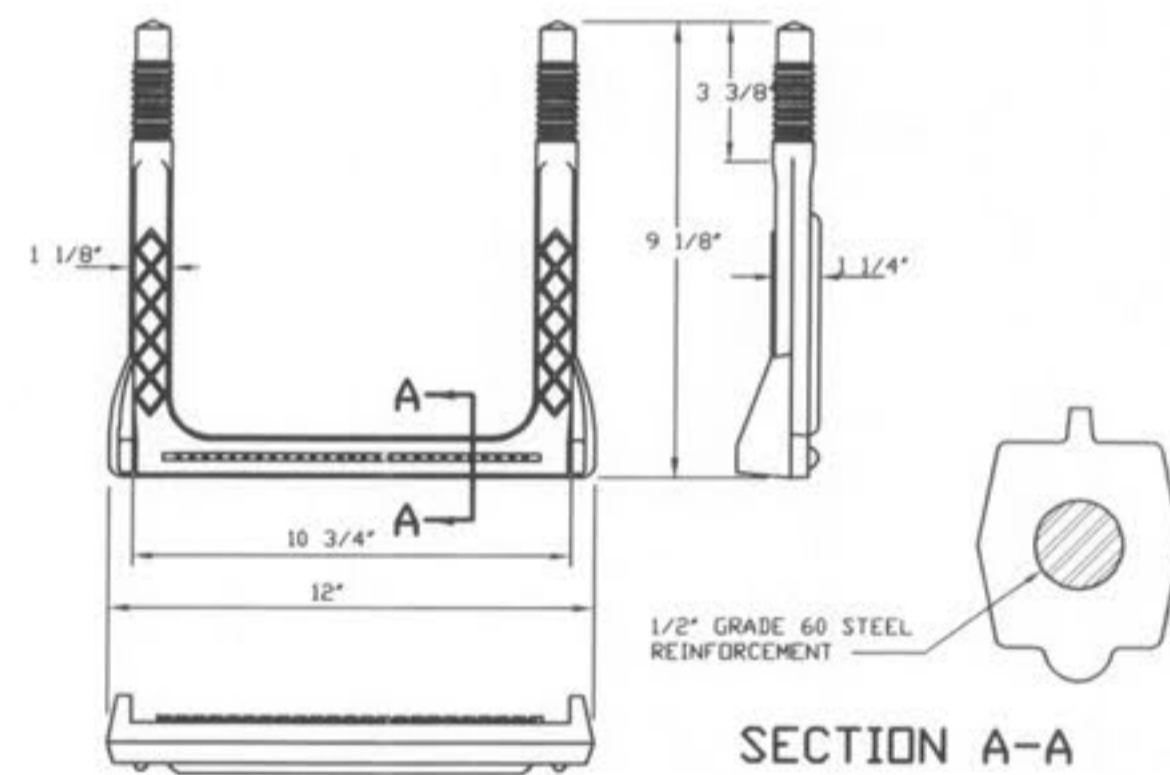
LOCKING DEVICE FOR TYPE 'N' LOCK TYPE MANHOLE COVER



LOCKING DEVICE FOR TYPE 'T' LOCK TYPE MANHOLE COVER



CAST IRON MANHOLE STEPS



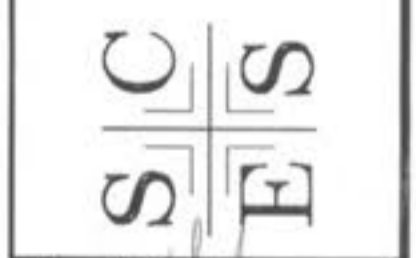
COPOLYMER POLYPROPYLENE PLASTIC MANHOLE STEP FOR PRECAST MANHOLE



DISCLAIMER OF RESPONSIBILITY
I HEREBY CERTIFY THAT THE DRAWINGS PREPARED BY ME OR UNDER MY SUPERVISION TO BE AUTHORIZED BY MY SEAL AND SIGNATURE TO BE USED FOR THE PROJECT DESCRIBED HEREIN. I AM NOT RESPONSIBLE FOR ANY OTHER DRAWINGS, REVISIONS, ESTIMATES, REPORTS OR OTHER DOCUMENTS OR INSTRUMENTS RELATING TO OR PERTAINING TO BE USED FOR ANY PART OR PARTS OF THE PROJECT DESCRIBED HEREIN.

DESIGNED: GDO
CHECKED: _____
DATE: _____
PROJECT NO.: _____
SHEET OF

ST. CHARLES ENGINEERING & SURVEYING, INC.
801 S. FIFTH STREET, SUITE 202
ST. CHARLES, MO 63301
TEL: (636) 947-0607 FAX: (636) 947-2448



ORDER NO. 041419
DATE

STANDARD SANITARY DETAILS

IMPROVEMENT PLANS
BELLEAU CROSSING
SANITARY DETAILS 2

CITY OF O'FALLON
DEPARTMENT OF PUBLIC WORKS DESIGN GROUP
O'FALLON, MISSOURI