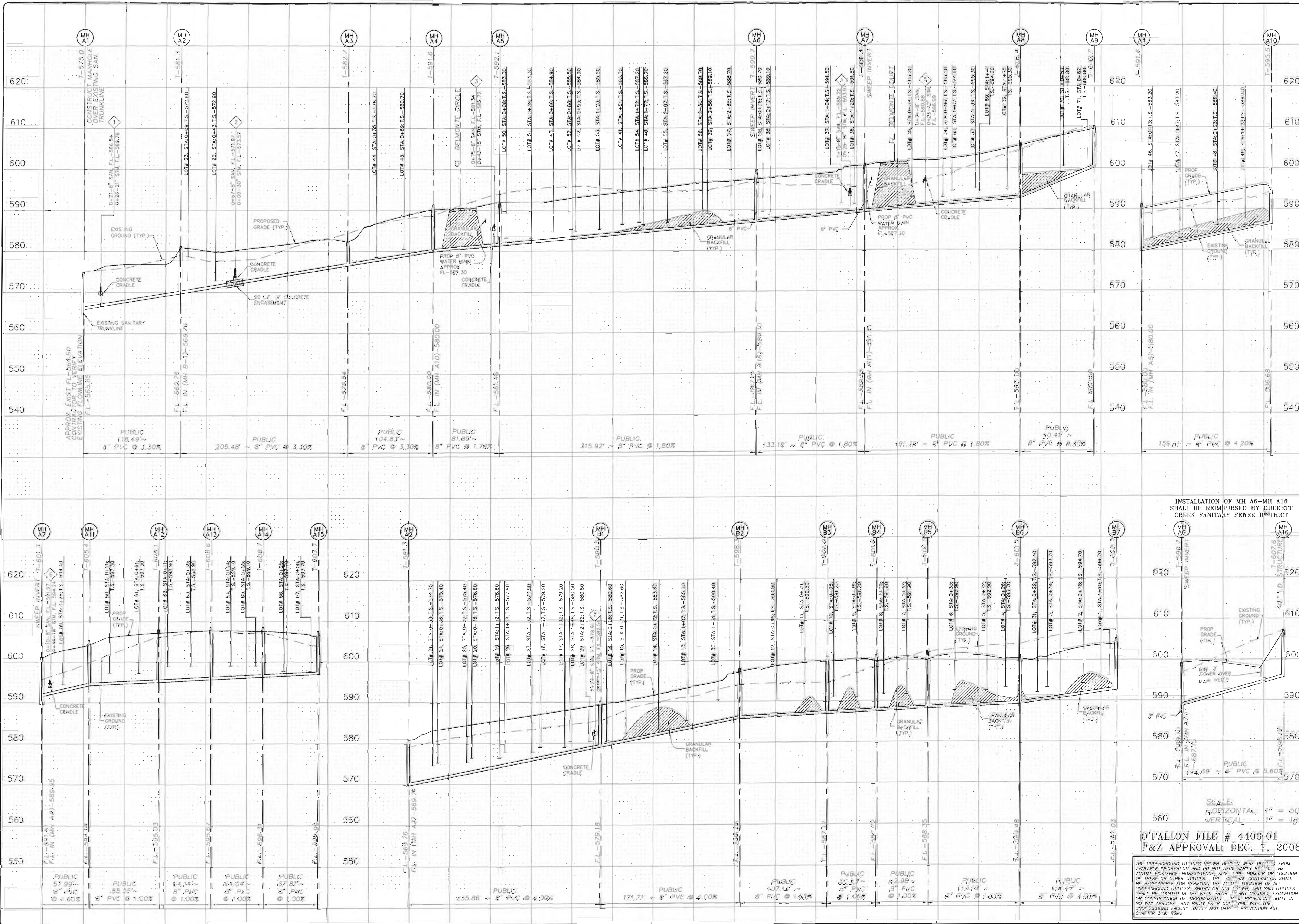


Drawing name: K:\plans\63 Belmonte Landing\63\Improvements\63\63.sdw Plotted on Apr 16, 2007 - 10:27am Plotted by: jbonvent



O'FALLON FILE # 4106.01  
 P&Z APPROVAL DEC. 7, 2006

SCALE  
 HORIZONTAL 1" = 60'  
 VERTICAL 1" = 10'

THE UNDERGROUND UTILITIES SHOWN HEREIN WERE PULLED FROM AVAILABLE INFORMATION AND DO NOT NECESSARILY REFLECT THE ACTUAL EXISTENCE, NONEXISTENCE, SIZE, TYPE, NUMBER OR LOCATION OF THESE OR OTHER UTILITIES. THE CONTRACTOR SHALL BE RESPONSIBLE FOR VERIFYING THE ACTUAL LOCATION OF ALL UNDERGROUND UTILITIES, SHOWN OR NOT SHOWN, AND SAID UTILITIES SHALL BE LOCATED IN THE FIELD PRIOR TO ANY GRADING, EXCAVATION OR CONSTRUCTION OF IMPROVEMENTS. THE CONTRACTOR SHALL IN NO WAY ABSOLVE ANY PARTY FROM COMPLYING WITH THE UNDERGROUND FACILITY SAFETY AND DAMAGE PREVENTION ACT, CHAPTER 315, RSMo.

ISSUE REMARKS/DATE:

1	FIRST SUBMITTAL 01-26-07
2	REVISED PER DUKETT CREEK SANITARY DISTRICT
3	REVISED PER CITY OF O'FALLON APPROVED 02-23-07
4	REVISED PER CITY OF O'FALLON APPROVED 02-23-07
5	REVISED PER CITY OF O'FALLON APPROVED 03-28-07
6	REVISED PER O'FALLON APPROVED 04-16-07

PREPARED FOR:  
**McBride and Son Homes**  
 Land Development, Inc.  
 #1 McBride and Son Center Drive  
 Chesterfield, Missouri 63005  
 (636) 537-2000



THE **STERLING** CO.  
 ENGINEERS & SURVEYORS  
 5055 NEW BALMARTINE ROAD  
 ST. LOUIS, MISSOURI 63129  
 (314) 487-0440 FAX 487-8944  
 E-MAIL: Sterling\_engineering@sir-sur.com

PROJECT: BELMONTE LANDING  
 SHEET TITLE: SANITARY SEWER PROFILES

NO.	05 11 363
M.S.D.	SHEET
P#	6.1
DATE FILED	
DATE	
OF	

BASE MAP N/A