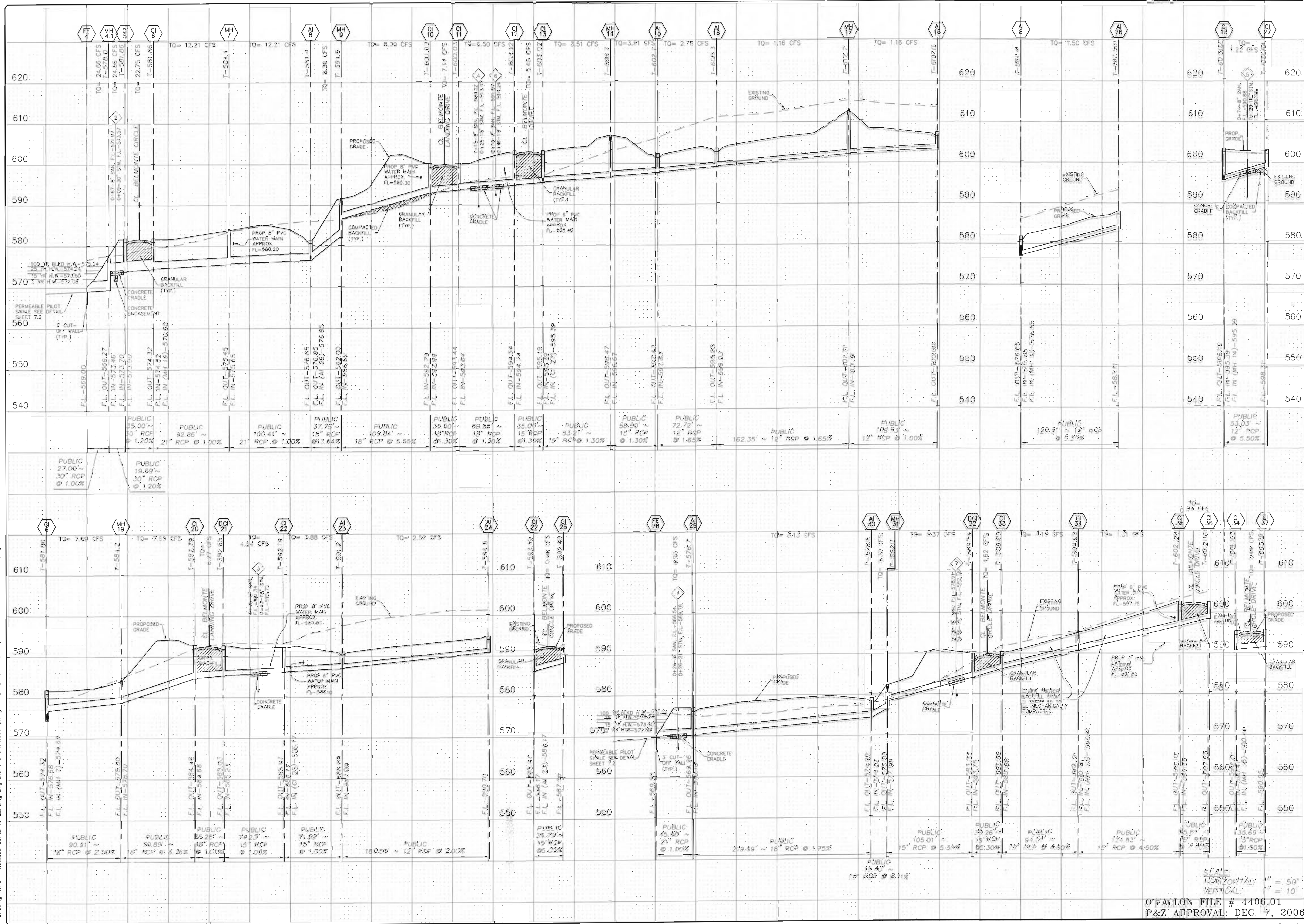
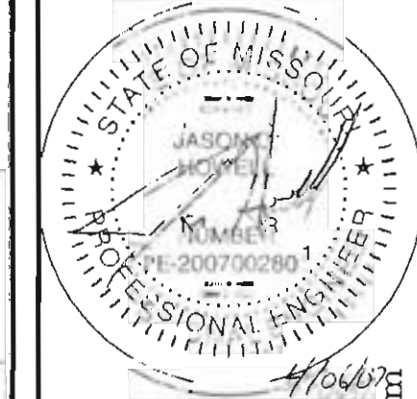


Drawing name: K:\S11363 Belmonte Landing\Map\Improvement\1363Map.dwg Plotted on: Apr 06, 2007 - 9:25am Plotted by: jhewell



ISSUE	REMARKS/DATE
1	FIRST SUBMITTAL 01-12-07
2	REVISED PER DUCKETT CHECK MIN 12-24-07
3	REVISED PER CITY OF O'FALLON PWS 2-3-07
4	REVISED PER CITY OF O'FALLON PWS #2 8-23-07
5	REVISED PER CITY OF O'FALLON PWS #2 8-23-07
6	REVISED PER CITY OF O'FALLON PWS #2 8-23-07
7	REVISED PER CITY OF O'FALLON PWS #2 8-23-07

PREPARED FOR:
McBride and Son Homes
 Land Development, Inc.
 #1 McBride and Son Center Drive
 Chesterfield, Missouri 63005
 (636) 537-2000



THE **STERLING** CO.
 ENGINEERS & SURVEYORS
 5055 NEW BRUNSWICK ROAD
 ST. LOUIS, MISSOURI 63129
 (314) 497-0440 FAX 487-8944
 E-Mail: Sterling@sterling-eng-sur.com

PROJECT: BELMONTE LANDING
 SHEET TITLE: STORM SEWER PROFILES

PROJECT: BELMONTE LANDING
 SHEET TITLE: STORM SEWER PROFILES

NO. 05 11 363
 M.S.D. SHEET 7.1
 P# OF

SCALE:
 HORIZONTAL: 1" = 50'
 VERTICAL: 1" = 10'

O'FALLON FILE # 4406.01
 P&Z APPROVAL: DEC. 7, 2006
 BASE MAP N/A