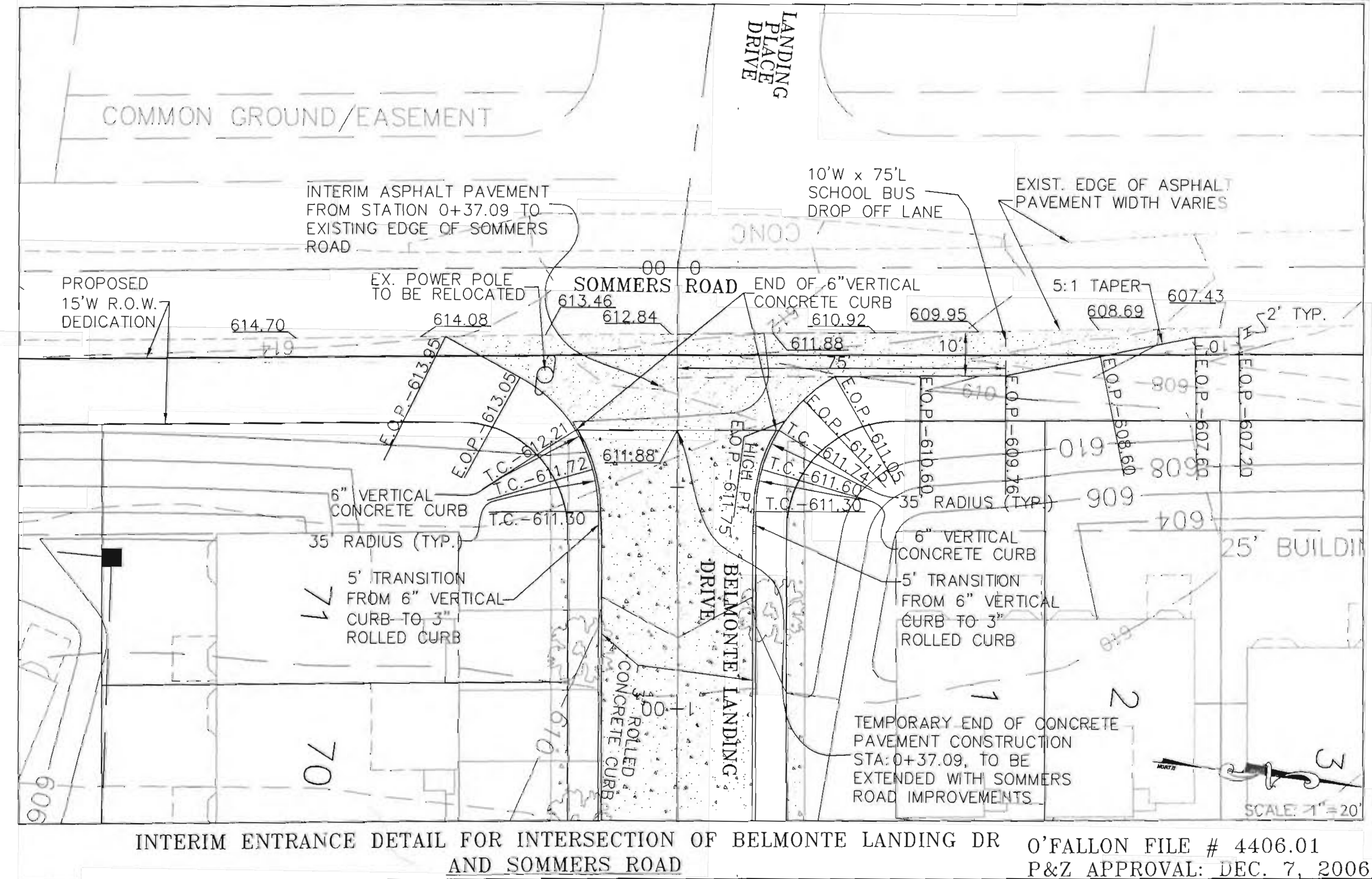
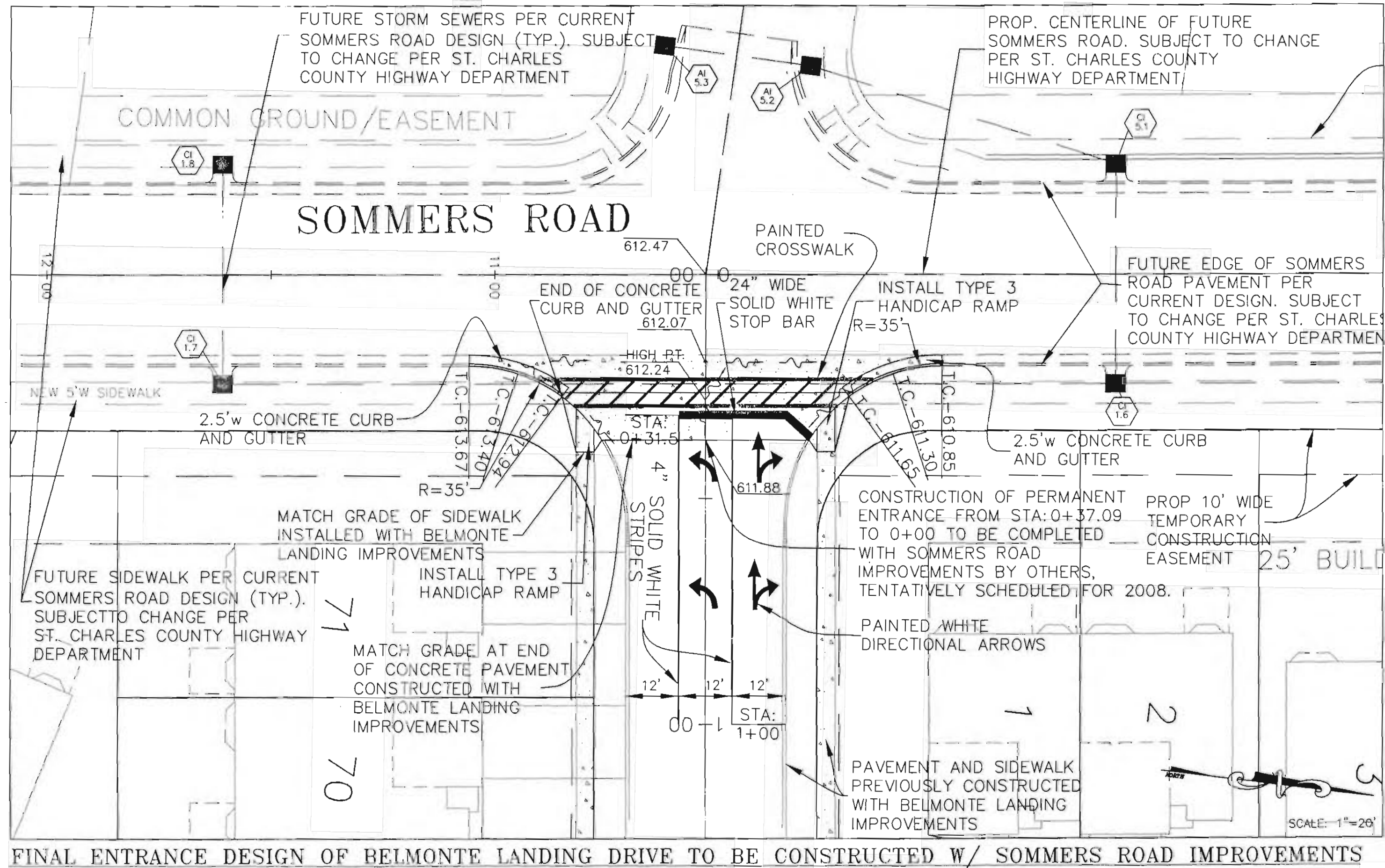
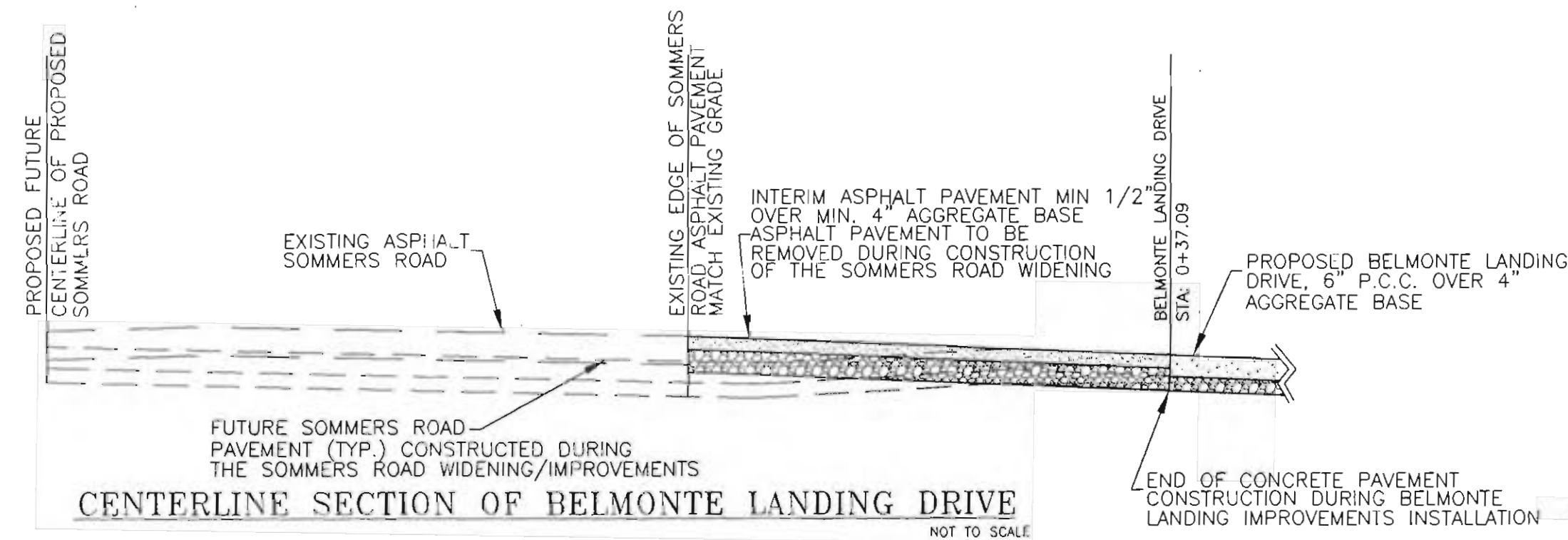
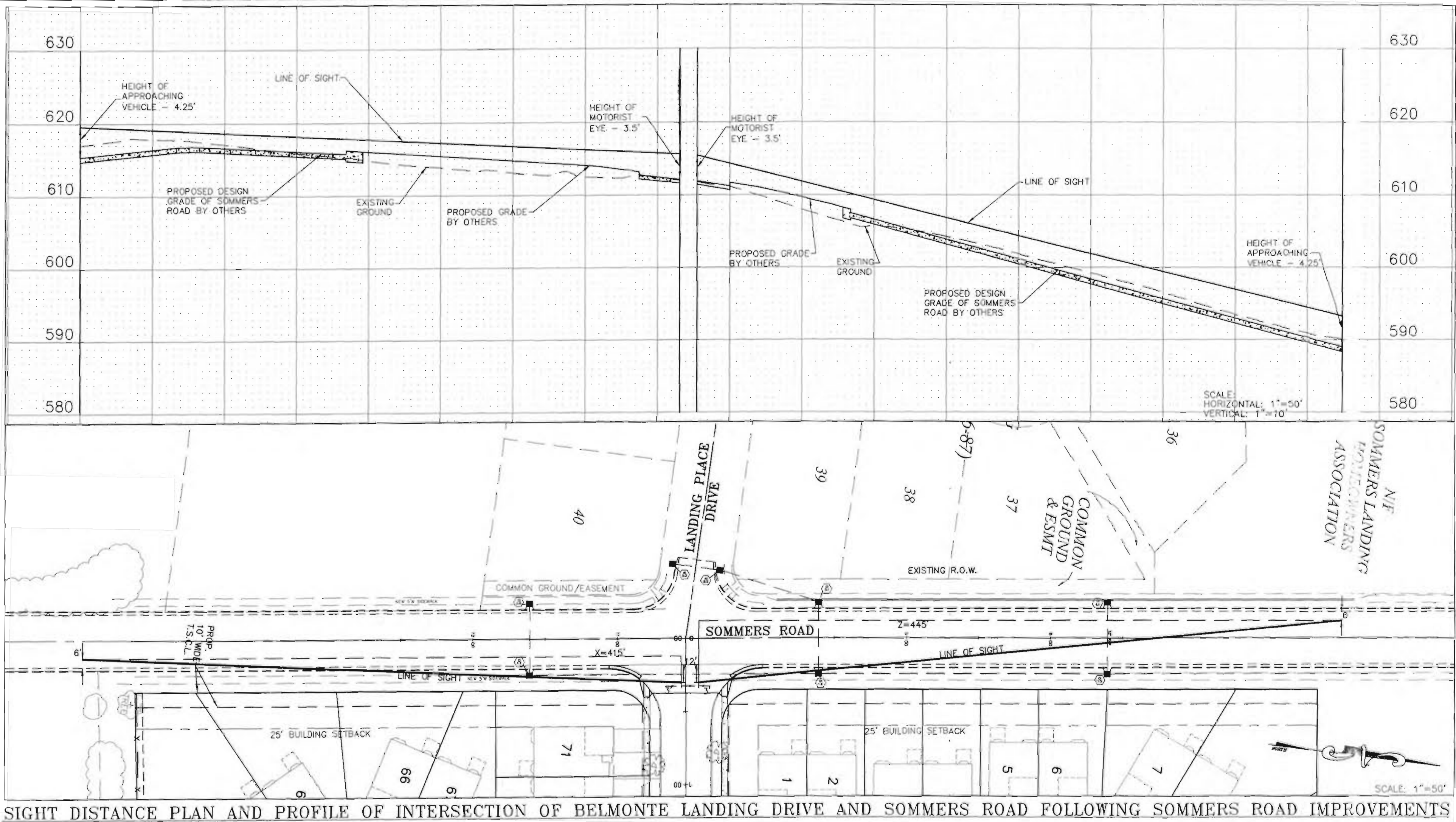
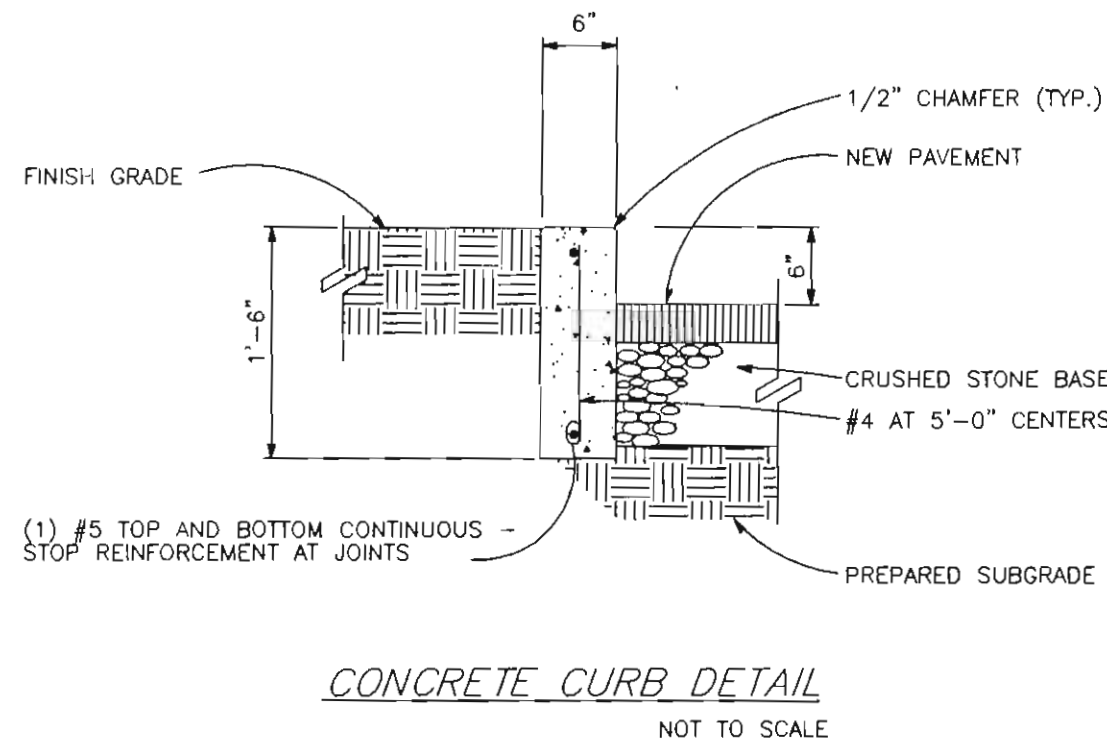


**NOTES:**

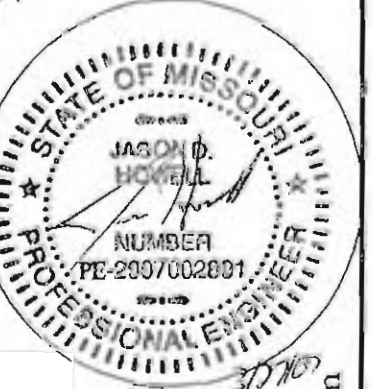
1. A DESIGN SPEED OF 40 MPH WAS ASSUMED FOR THE SIGHT DISTANCE ANALYSIS OF SOMMERS ROAD AND BELMONTE LANDING DRIVE.
2. THE SAINT CHARLES COUNTY HIGHWAY DEPARTMENT CRITERIA WAS USED IN THE SIGHT DISTANCE ANALYSIS. THE CRITERIA CAN BE FOUND ON SHEET 40.25-1 OF THE SAINT CHARLES DESIGN CRITERIA MANUAL.
3. T.C. DESIGNATES TOP OF CURB ELEVATIONS E.O.P. DESIGNATES EDGE OF PAVEMENT ELEVATIONS.
4. THE INTERIM ENTRANCE SHOWN AT THE BOTTOM RIGHT OF THIS SHEET WILL BE CONSTRUCTED BY MCBRIDE AND SON LAND DEVELOPMENT DURING CONSTRUCTION OF THE BELMONTE LANDING IMPROVEMENTS.
5. THE ULTIMATE ENTRANCE DESIGN AT THE BOTTOM RIGHT OF THIS SHEET WILL BE CONSTRUCTED BY OTHERS DURING THE CONSTRUCTION OF THE ROAD IMPROVEMENTS TO SOMMERS ROAD. THE STRIPING SHOWN ON THE ULTIMATE DESIGN WILL BE COMPLETED BY MCBRIDE AND SON LAND DEVELOPMENT ONCE IMPROVEMENTS ON SOMMERS ROAD ARE COMPLETED.
6. A SPECIAL USE PERMIT MUST BE OBTAINED FROM ST. CHARLES COUNTY HIGHWAY DEPARTMENT BEFORE ANY WORK CAN BE PERFORMED ON SOMMERS ROAD RIGHT OF WAY. PLEASE CONTACT DONNA RAY AT ST. CHARLES COUNTY HIGHWAY DEPARTMENT 636-949-7305.
7. ST. CHARLES COUNTY HIGHWAY DEPARTMENT SHALL BE NOTIFIED 24 HOURS PRIOR TO THE START OF CONSTRUCTION WITHIN THE SOMMERS ROAD R.O.W. CONTACT VINCE GRIBBLE AT 636-949-7305.
8. SOMMERS ROAD SHALL BE KEPT CLEAN OF MUD OR OTHER DEBRIS THROUGHOUT THE DAY DURING CONSTRUCTION.



Drawing name: K:\0511363 Belmonte Landing\eng\improvements\1363rpd.dwg Plotted on: Mar 26, 2007 - 3:15pm Plotted by: jghovell

ISSUE	REMARKS/DATE
1	FIRST SUBMITTAL 01-12-07
2	REVISED PER ST. CHARLES COUNTY HIGHWAY DEPT 2-5-07
3	REVISED PER CITY OF O'FALLON AND P&Z 2-1-07
4	REVISED PER CITY OF O'FALLON, P&Z 2-1-07
5	REV. PER CITY OF O'FALLON, P&Z 2-1-07

PREPARED FOR:  
**McBride and Son Homes**  
 Land Development, Inc.  
 #1 McBride and Son Center Drive  
 Chesterfield, Missouri 63005  
 (636) 537-2000



THE **STERLING CO.**  
 ENGINEERS & SURVEYORS  
 5055 NEW BAUMGARTNER ROAD  
 ST. LOUIS, MISSOURI 63129  
 (314) 991-1414  
 (E-Mail: Sterling@sterling-eng-survey.com)

PROJECT:	<b>BELMONTE LANDING</b>	
DRAWN:	DESIGNED:	CHECKED:
NO.	05 11 363	SHEET
M.S.D.		9.2
P#		
SHEET TITLE:	ENTRANCE DETAIL	
DATE:	O'FALLON FILE # 4406.01 P&Z APPROVAL: DEC. 7, 2006	
SCALE:	BASE MAP N/A	