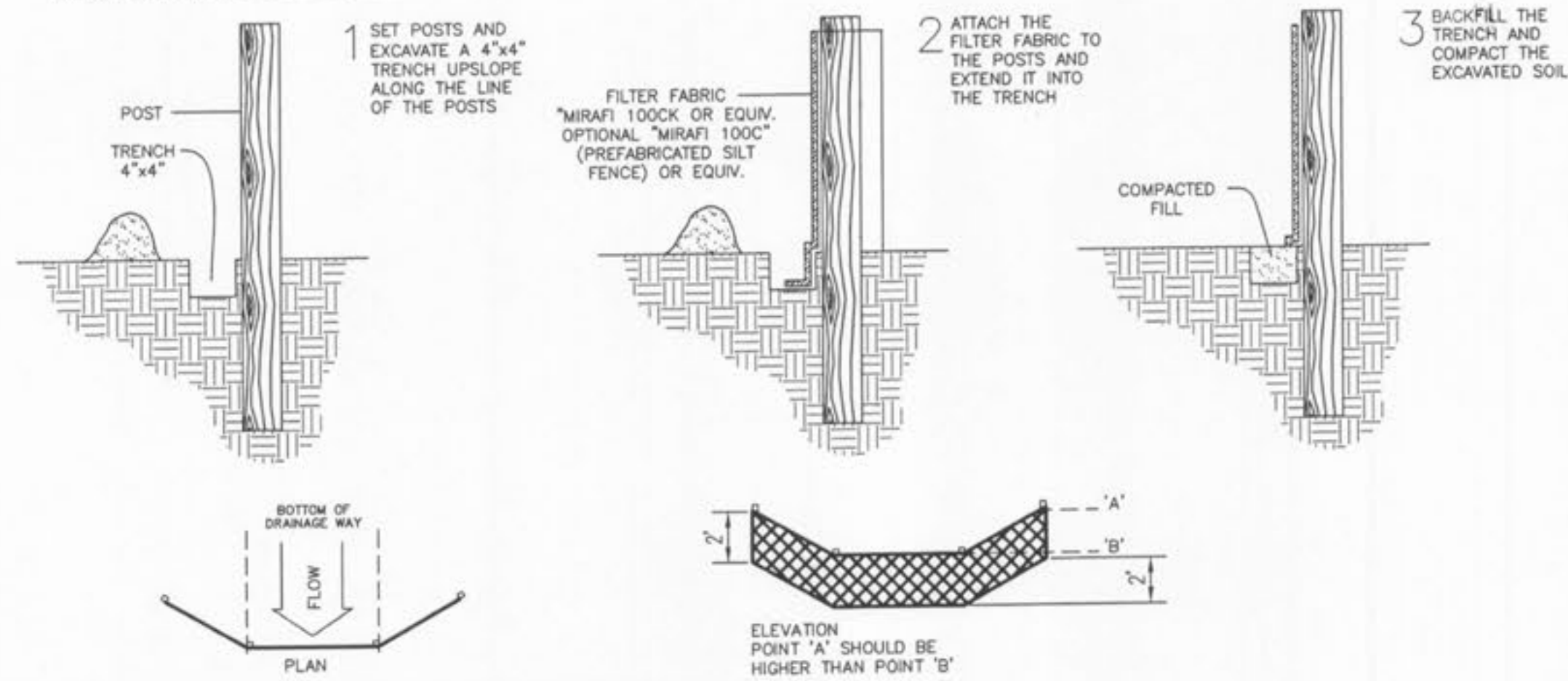
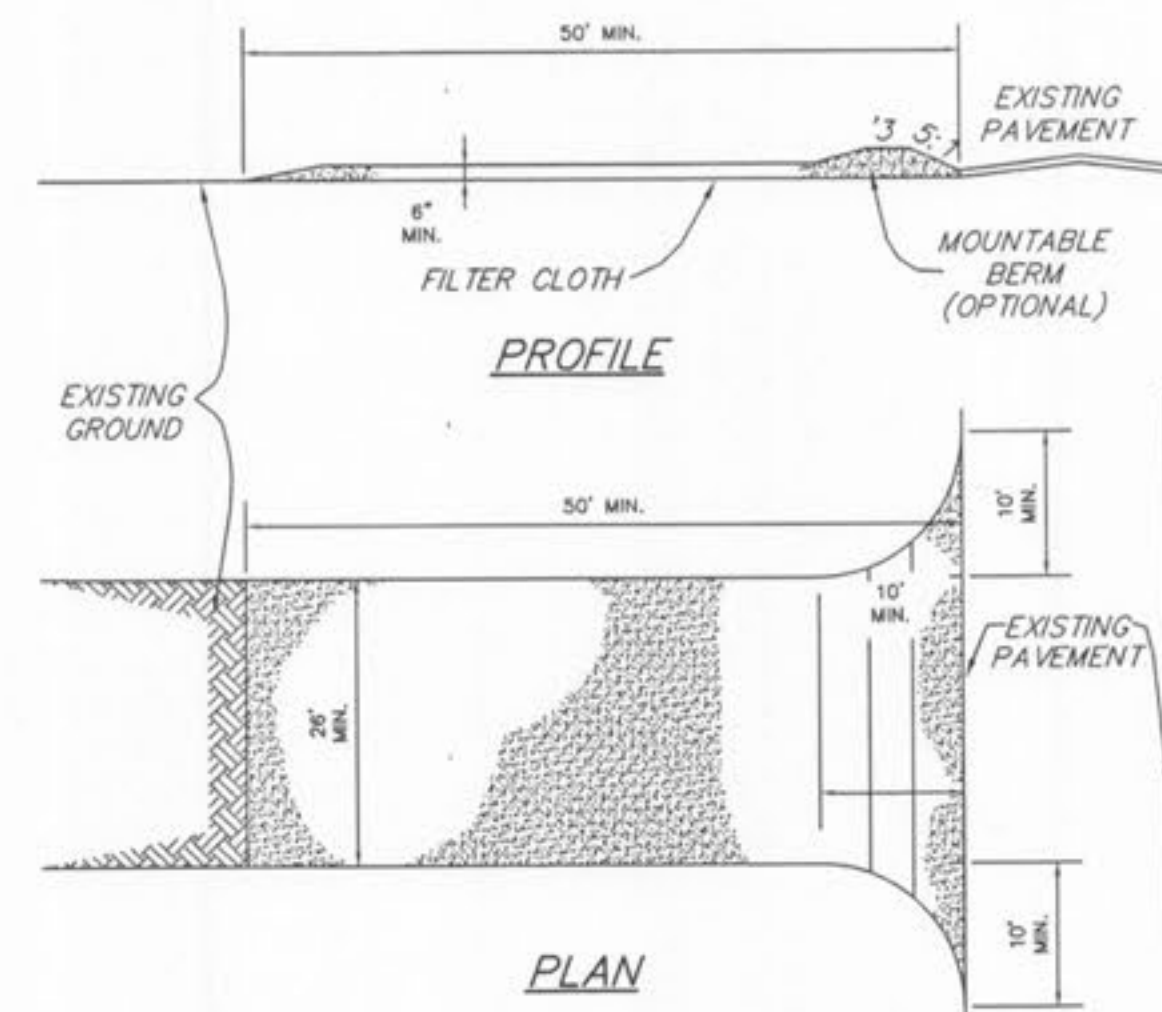


- MAINTENANCE**
1. FILTER BARRIERS SHALL BE INSPECTED IMMEDIATELY AFTER EACH RAINFALL AND AT LEAST DAILY DURING PROLONGED RAINFALL. ANY REQUIRED REPAIRS SHALL BE MADE IMMEDIATELY.
 2. SHOULD THE FABRIC DECOMPOSE OR BECOME INEFFECTIVE PRIOR TO THE END OF THE EXPECTED USABLE LIFE AND THE BARRIER STILL BE NECESSARY, THE FABRIC SHALL BE REPLACED PROMPTLY.
 3. SEDIMENT DEPOSITS SHOULD BE REMOVED AFTER EACH STORM EVENT. THEY MUST BE REMOVED WHEN DEPOSITS REACH APPROXIMATELY HALF THE HEIGHT OF THE BARRIER.
 4. ANY SEDIMENT DEPOSITS REMAINING IN PLACE AFTER THE SILT FENCE OR FILTER BARRIER IS NO LONGER REQUIRED SHALL BE DRESSED TO CONFORM WITH THE EXISTING GRADE, PREPARED AND SEED.



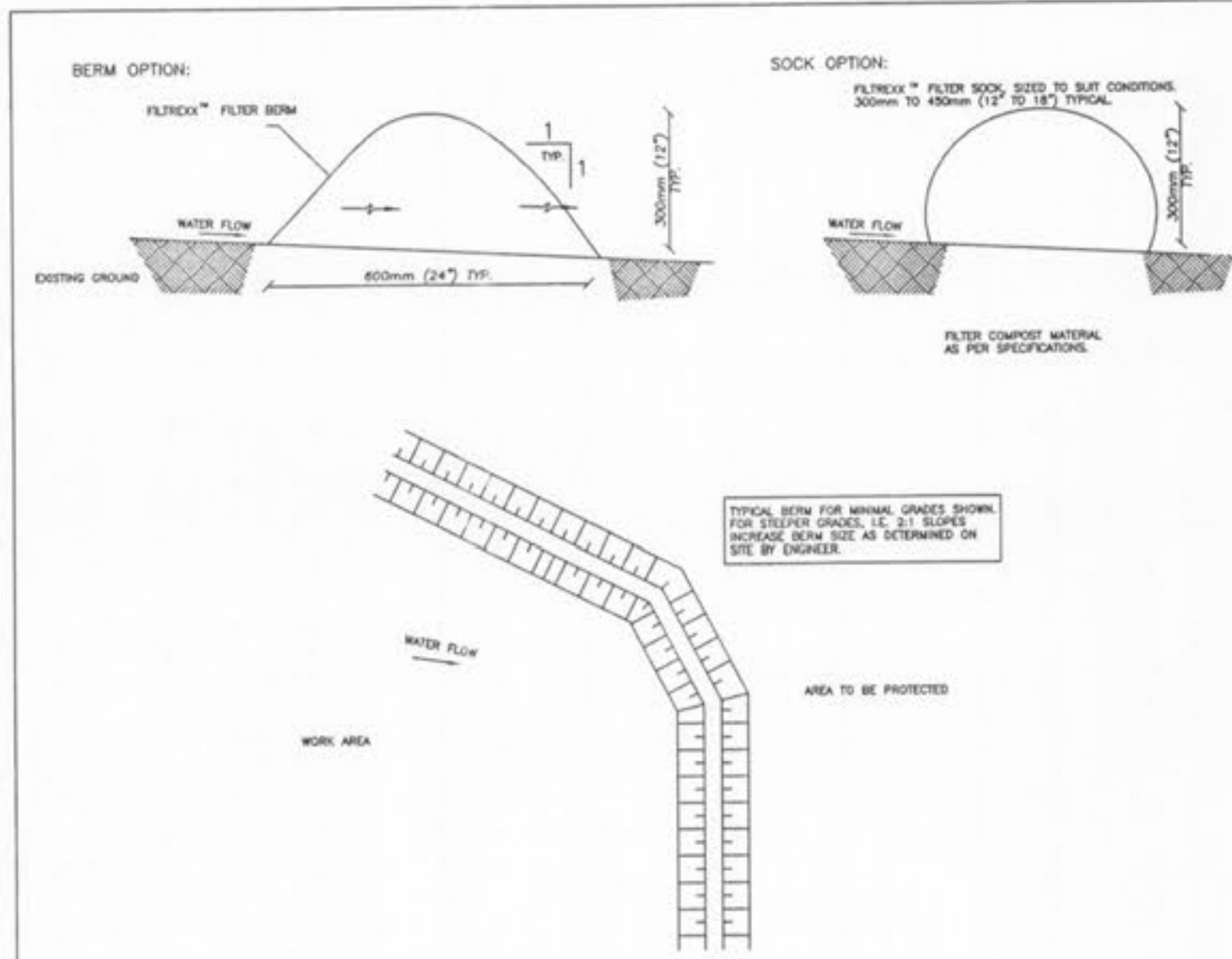
SILTATION FENCE DETAIL

SILTATION CONTROL SWALE:
INTERIM TEMPORARY GRADING:



- CONSTRUCTION SPECIFICATIONS**
1. Stone Size - Use 2" stone, or reclaimed or recycled concrete equivalent.
 2. Length - As required, but not less than 50 feet (except on a single residence lot where a 30 foot minimum length would apply).
 3. Thickness - Not less than six (6) inches.
 4. Width - Twenty (20) foot minimum, but not less than the full width at points where ingress or egress occurs.
 5. Filter Cloth - Will be placed over the entire area prior to placing of stone. Filter will not be required on a single family residence lot.
 6. Surface Water - All surface water flowing or diverted toward construction entrances shall be piped across the entrance. If piping is impractical, a mountable berm with 5:1 slopes will be permitted.
 7. If water is not available, a water truck will be provided.

STABILIZED CONSTRUCTION ENTRANCE/WASHDOWN AREA
NOT TO SCALE



NOTES:

1. ALL MATERIAL TO MEET FILTREXX™ SPECIFICATIONS.
2. THE CONTRACTOR SHALL MAINTAIN THE COMPOST FILTER BERM IN A FUNCTIONAL CONDITION AT ALL TIMES AND IT SHALL BE ROUTINELY INSPECTED.
3. WHERE THE BERM REQUIRES REPAIR, IT WILL BE ROUTINELY REPAIRED.
4. THE CONTRACTOR SHALL REMOVE SEDIMENTS COLLECTED AT THE BASE OF THE BERM WHEN THEY REACH 1/3 OF THE EXPOSED HEIGHT OF THE BERM, OR AS DIRECTED BY THE ENGINEER.
5. THE COMPOST FILTER BERM WILL BE DISPERSED ON SITE WHEN NO LONGER REQUIRED, AS DETERMINED BY THE ENGINEER.

FILTREXX™ CANADA

324 GOVERNORS RD. EAST
PARIS, ONTARIO
CANADA N3L 3E1
519-754-8298

FILTREXX™ INTERNATIONAL

35481 GRAFTON EASTERN RD
GRAFTON, OH
USA 43044
440-925-8041

SITE SEDIMENT CONTROL

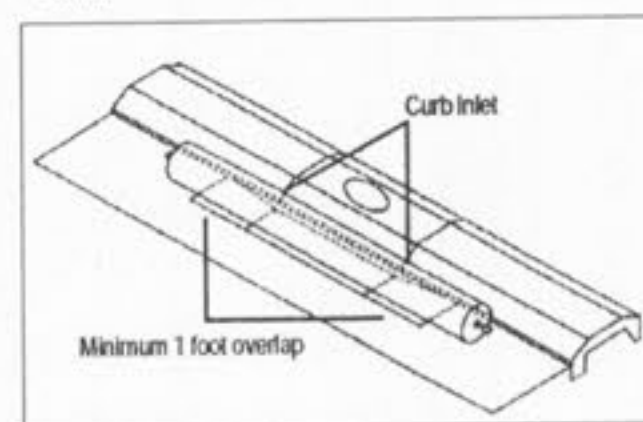
DESIGN:	R.D.B.	SCALE:	NTS
CHECKED:	R.D.B.	DRAWN:	G.W.S.
SHEET:	5 of 7	DWG. NO.:	
DATE:			T5

GutterBuddy™ Specification
For Curb Gutter Storm Drains
1.0 Description

1.1 This work shall consist of furnishing, placing, maintaining and removing the GutterBuddy™ sediment control device as directed by the engineer and as shown on the contract drawings. The GutterBuddy™ sediment control system distributed by:

A2F Environmental, Inc.
2831 Cardwell Road
Richmond, Virginia 23264
Phone: 800-443-3638 ?? Fax: 804-743-7779
www.a2fenvironmental.com

- 2.0 Materials**
- 2.1 **GUTTERBUDDY™**
The GutterBuddy™ shall be synthetic filter manufactured from recycled polyethylene fibers.
- 2.1.1 The GutterBuddy™ will be manufactured to be 6" in diameter and are available in 4', 6', 8', 10', 12', 14' and 16' lengths and a minimum of twenty-four (24) inches longer than the curb inlet opening. This will allow for sufficient length to cover the inlet with twelve (12) inches beyond the inlet on both ends.
- 3.0 Construction Sequence**
- 3.1 General
- 3.1.1 Install the GutterBuddy™ in front of the curb inlet opening. Each end of the GutterBuddy™ should overlap the curb inlet approximately 12".
- 3.1.2 The GutterBuddy™ should be cleaned if a visual inspection shows silt and debris build up around the GutterBuddy™.
- 3.1.3 To remove the GutterBuddy™, lift out of the opening.
- 3.1.4 The GutterBuddy™ is reusable. Once the construction is complete and it is no longer needed for sediment control, remove, clean and store out of the sunlight until needed on the next project.
- 3.1.5 Paving is likely if sediment is not removed regularly. Inspection of GutterBuddy™ should be on a regular basis and immediately after major rain events.



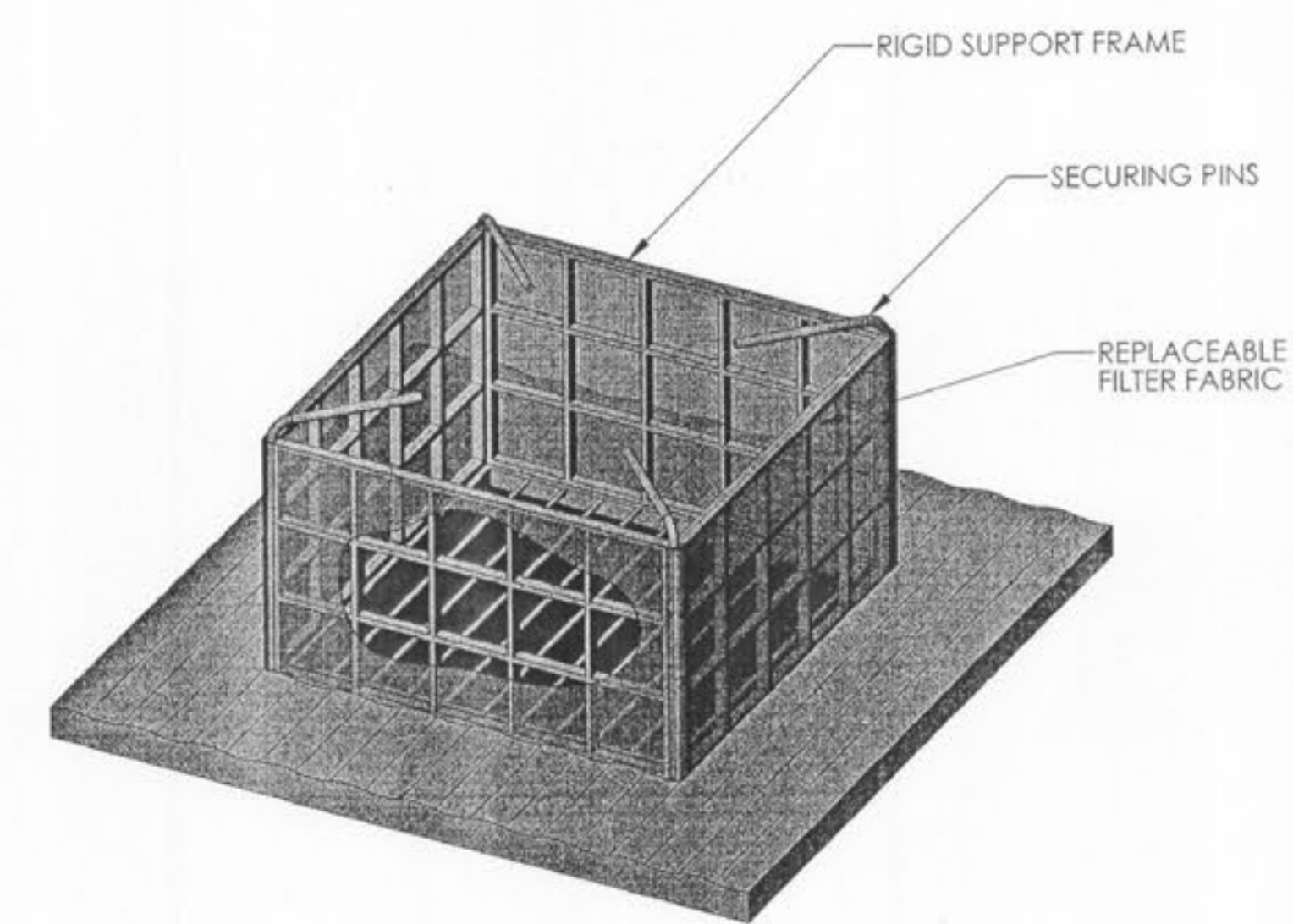
GUTTER BUDDY DETAIL
NOT TO SCALE

FiltR Fence™
Reusable Inlet Protection
FiltR Fence™ Advantages

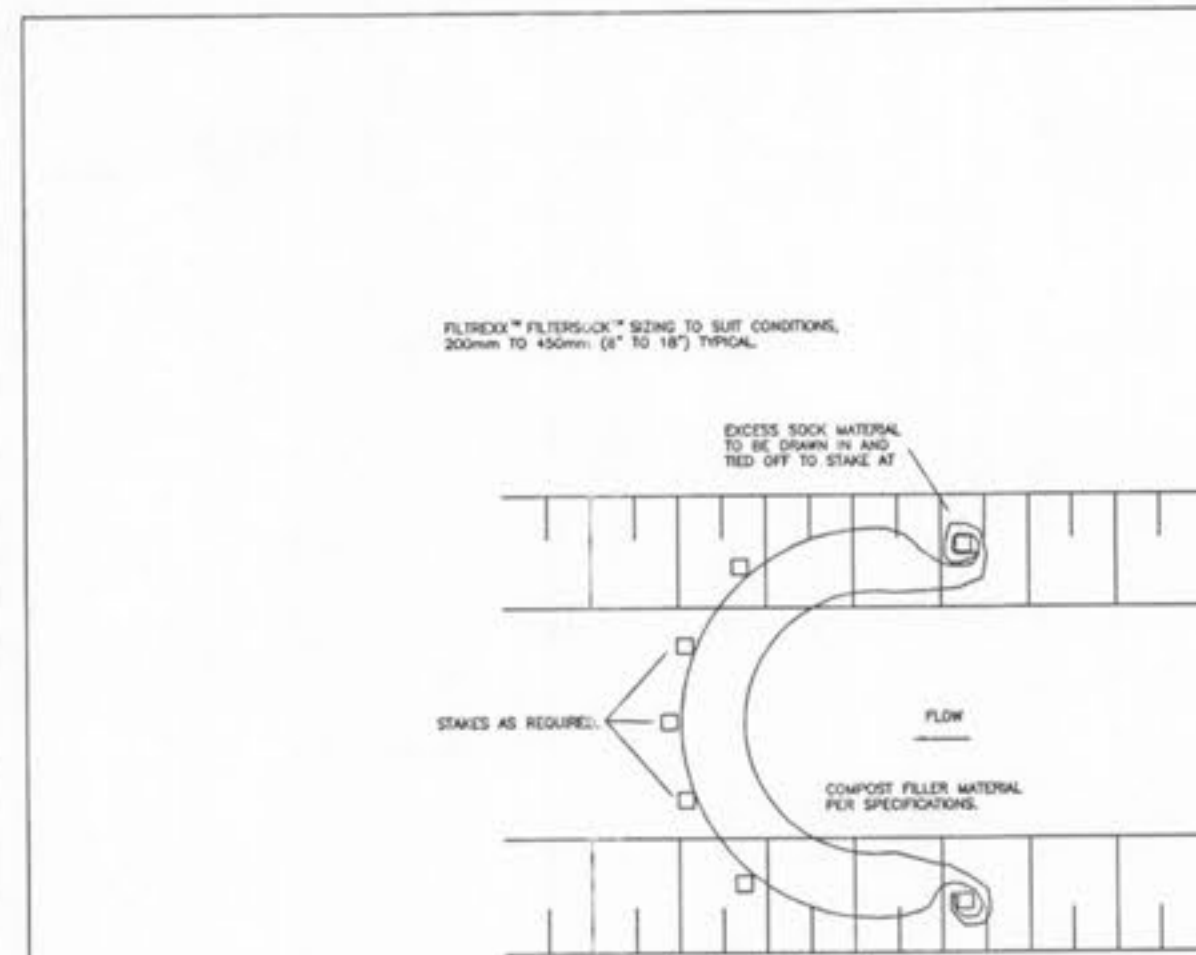
- Strong, light weight, portable
- Quick and easy assembly
- Proven, reliable performance
- Reusable and easy to clean
- Added jobsite safety
- Full 2 Year Warranty

The FiltR Fence™ is a REUSABLE inlet protector that keeps out silt and sediment throughout the entire construction project. The heavy-duty frame forms a sturdy barricade around nearly any size inlet. The frame members are secured to each other using steel pins, which double as ground stakes to secure the assembly to the ground. A geotextile sleeve is then placed around the perimeter to form a barrier for silt, sediment and debris. The simple 2 minute assembly significantly reduces labor costs.

In addition, the optional cover offers built-in safety by guarding against the many unsafe conditions found on most job sites. Once construction is complete, the 6" knockdown design makes this reusable unit easily transported to the next construction site. All of these features and benefits combine to make the FiltR Fence the contractor's choice for all their temporary erosion management needs.



FiltR Fence - Type A



NOTES:

1. ALL MATERIAL TO MEET FILTREXX™ SPECIFICATIONS.
2. COMPOST MATERIAL WILL BE DISPERSED ON SITE WHEN NO LONGER REQUIRED, AS DETERMINED BY THE ENGINEER.

FILTREXX™ CANADA

324 GOVERNORS RD. EAST
PARIS, ONTARIO
CANADA N3L 3E1
519-754-8298

FILTREXX™ INTERNATIONAL

35481 GRAFTON EASTERN RD
GRAFTON, OH
USA 43044
440-925-8041

DITCH CHECKS

DESIGN:	R.D.B.	SCALE:	NTS
CHECKED:	R.D.B.	DRAWN:	G.W.S.
SHEET:	3 of 7	DWG. NO.:	
DATE:			T3

ISSUE REMARKS/DATE

1	FIRST SUBMITTAL 01-12-07
4	REVISED PER CITY OF FALLON AND PWS&D 2.3-1-07

PREPARED FOR:
McBride and Son Homes
Land Development, Inc.
#1 McBride and Son Center Drive
Chesterfield, Missouri 63005
(636) 537-2000



PREPARED BY:
THE STERLING CO.
STERLING ENGINEERS & SURVEYORS
5055 NEW BAUMGARTNER ROAD
ST. LOUIS, MO 63114
(314) 487-0440 FAX 487-8944
E-Mail: Sterling@sterling-eng-surr.com

PROJECT:
BELMONTE LANDING

DRAWN: DESIGNED: CHECKED:

SHEET TITLE: SILTATION CONTROL DETAILS

NO.	05	11	363
M.S.D.			SHEET
P#			10.8
DIGITAL FILE LOCATION	DRAWING=STERLING-2		
DATE			07