

N0158'43"E

N/F
KAPLAN LUMBER COMPANY, INC.
BK 1413, PG. 268

1331.45'(S)

1331.15'(R10)

1331.15'(R10)

1331.15'(R10)

1331.15'(R10)

1331.15'(R10)

1331.15'(R10)

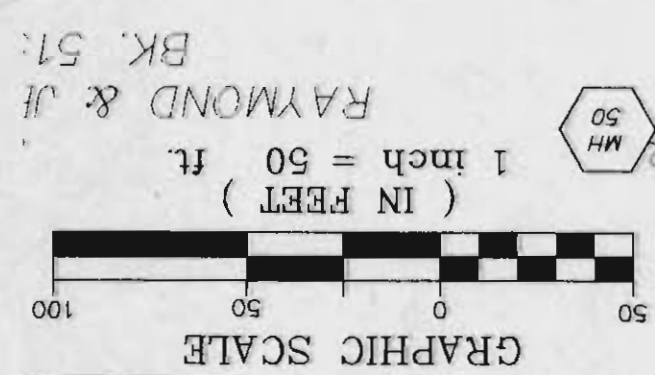
N/F
MICHAEL T. & EILEEN M. DAVIS, H/W
BK 962, PG. 1303

N/F
CHRISTOPHER J. & DELORIS E. BRUCK, H/W
BK 1662, PG. 1869

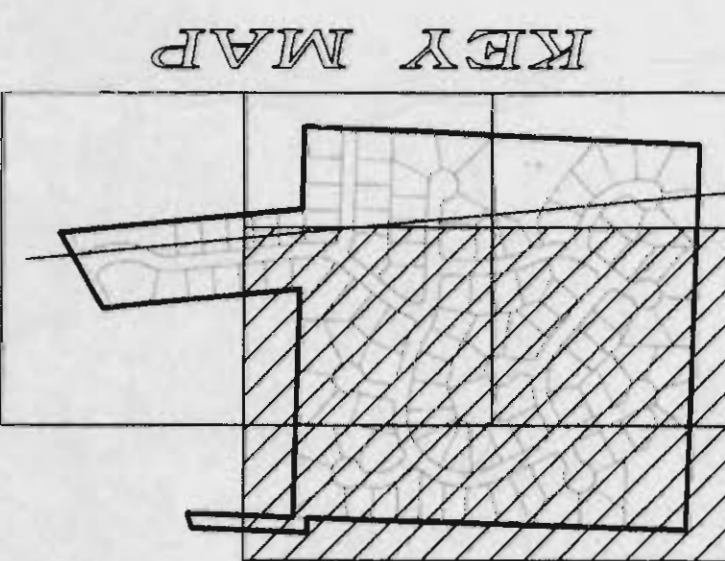
N021'12"E
50.00'(R6)
50.50'(R7)
50.42'(S)

S87°45'40"E

N87°45'40"W



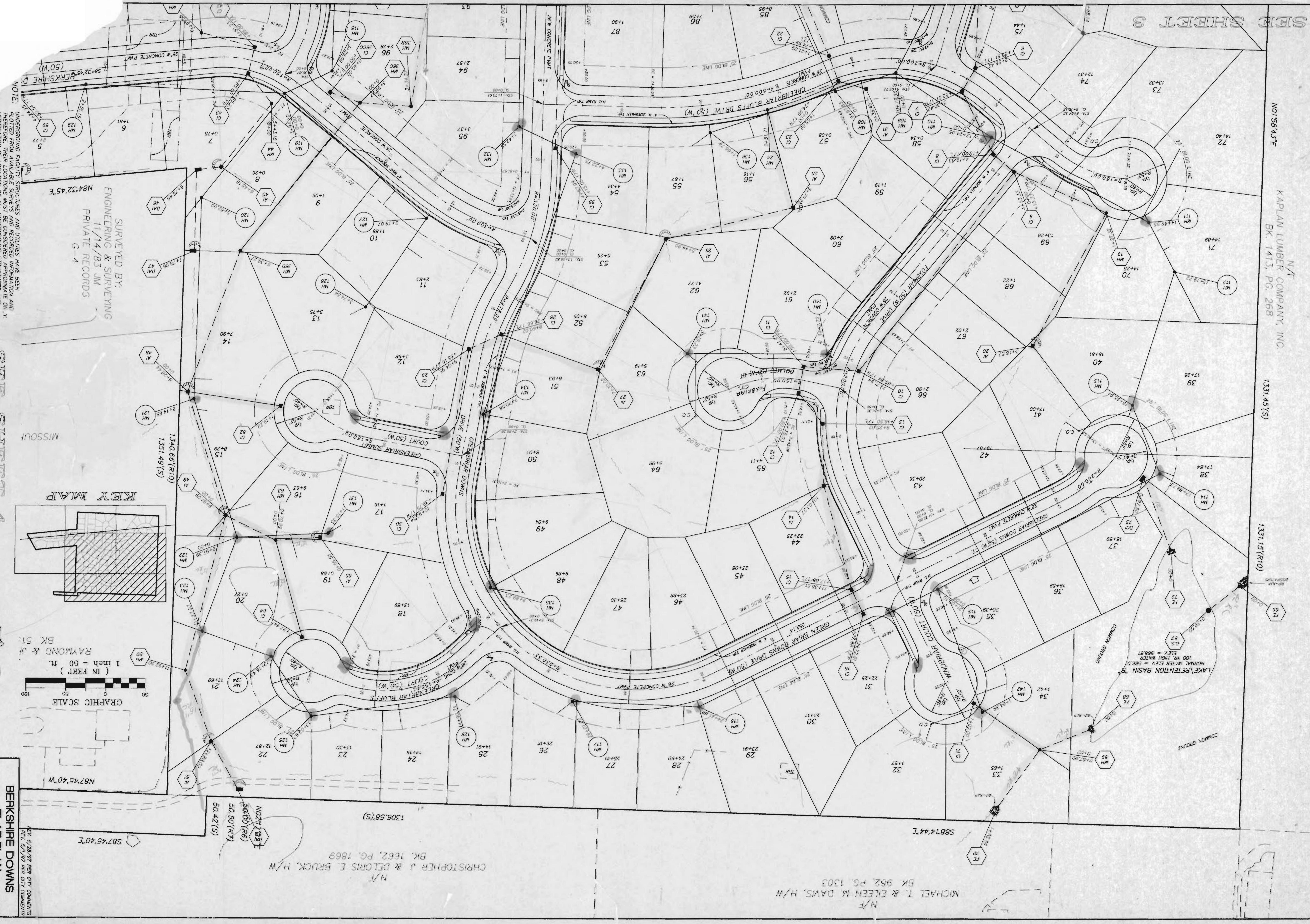
RAYMOND & JH
BK 51



MISSOURI

SURVEYED BY:
ENGINEERING & SURVEYING
11/14/83 JM
PRIVATE RECORDS
G-4

NOTE: UNDERGROUND FACILITY STRUCTURES AND UTILITIES HAVE BEEN PLOTTED FROM AVAILABLE SURVEYS AND RECORDED INFORMATION ON X-Y COORDINATE SYSTEM. THEREFORE, THEIR LOCATIONS MUST BE CONSIDERED APPROXIMATE ON X-Y COORDINATE SYSTEM. THE LOCATION OF ALL UNDERGROUND STRUCTURES AND UTILITIES ARE SHOWN ON THESE PLANS. SHALL E



BERKSHIRE DOWNS
FLAT PLAN