

N/T  
WILLIAM C. & JOAN ANN SCHNEIDER  
BK. 767, PG. 1909

N/T  
MICHAEL T. & EILEEN M. DAVIS, H/W  
BK. 962, PG. 1303

N/T  
CHRISTOPHER J. & DELORES L. BRUCK, H/W  
BK. 1662, PG. 1863

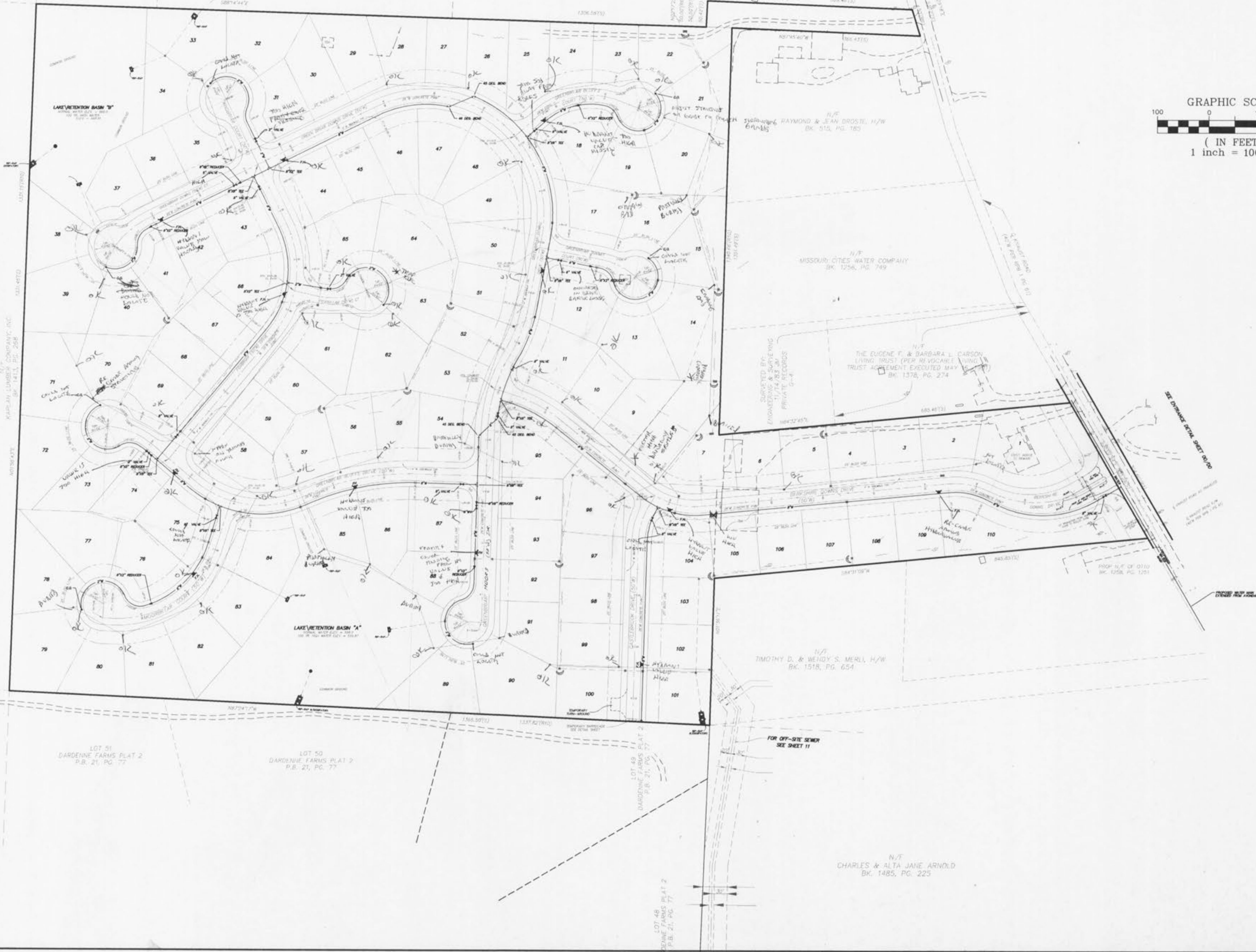
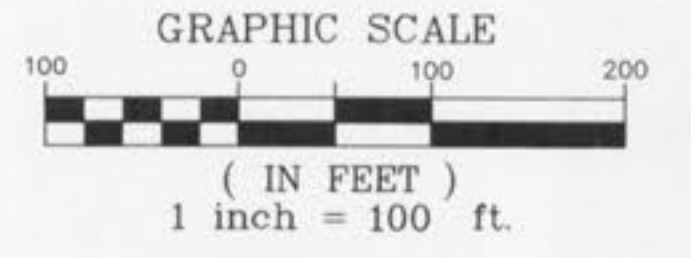
N/T  
RAYMOND & JEAN DROSTE, H/W  
BK. 512, PG. 180

N/T  
MISSOURI CITIES WATER COMPANY  
BK. 1256, PG. 749

N/T  
THE EUGENE F. & BARBARA L. CARSON  
LIVING TRUST (PER REVOCABLE AGREEMENT)  
TRUST AGREEMENT EXECUTED MAY 16, 1971  
BK. 1378, PG. 274

N/T  
TIMOTHY D. & WENDY S. MERILL, H/W  
BK. 1518, PG. 654

N/T  
CHARLES & ALTA JANE ARNOLD  
BK. 1485, PG. 225



UTILITY NOTE:  
UNDERGROUND FACILITY, STRUCTURES AND UTILITIES HAVE BEEN PLOTTED FROM AVAILABLE SURVEY RECORDS, RECORD DRAWINGS AND THEREFORE, THEIR LOCATIONS MUST BE CONSIDERED APPROXIMATE ONLY. VERIFICATION OF LOCATION OF ALL UNDERGROUND STRUCTURES AND FACILITIES EITHER SHOWN OR NOT SHOWN ON THESE PLANS, SHALL BE THE RESPONSIBILITY OF THE CONTRACTOR.