

SEE SHEET 17

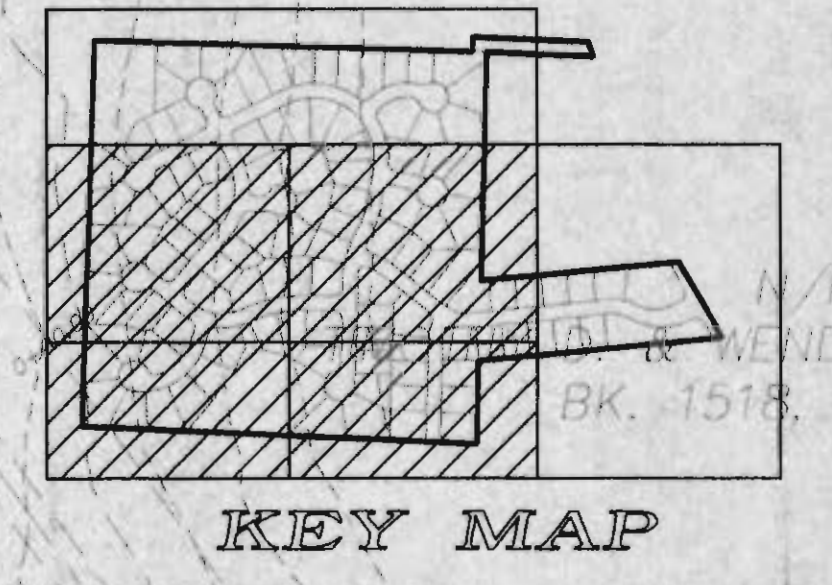
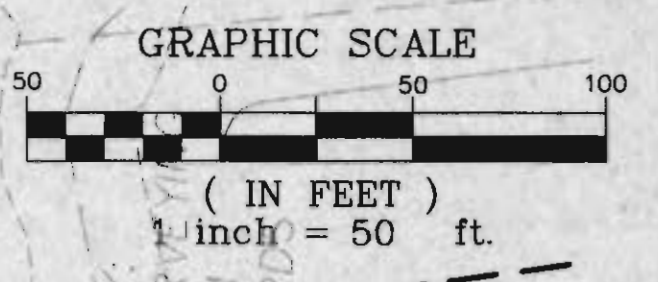
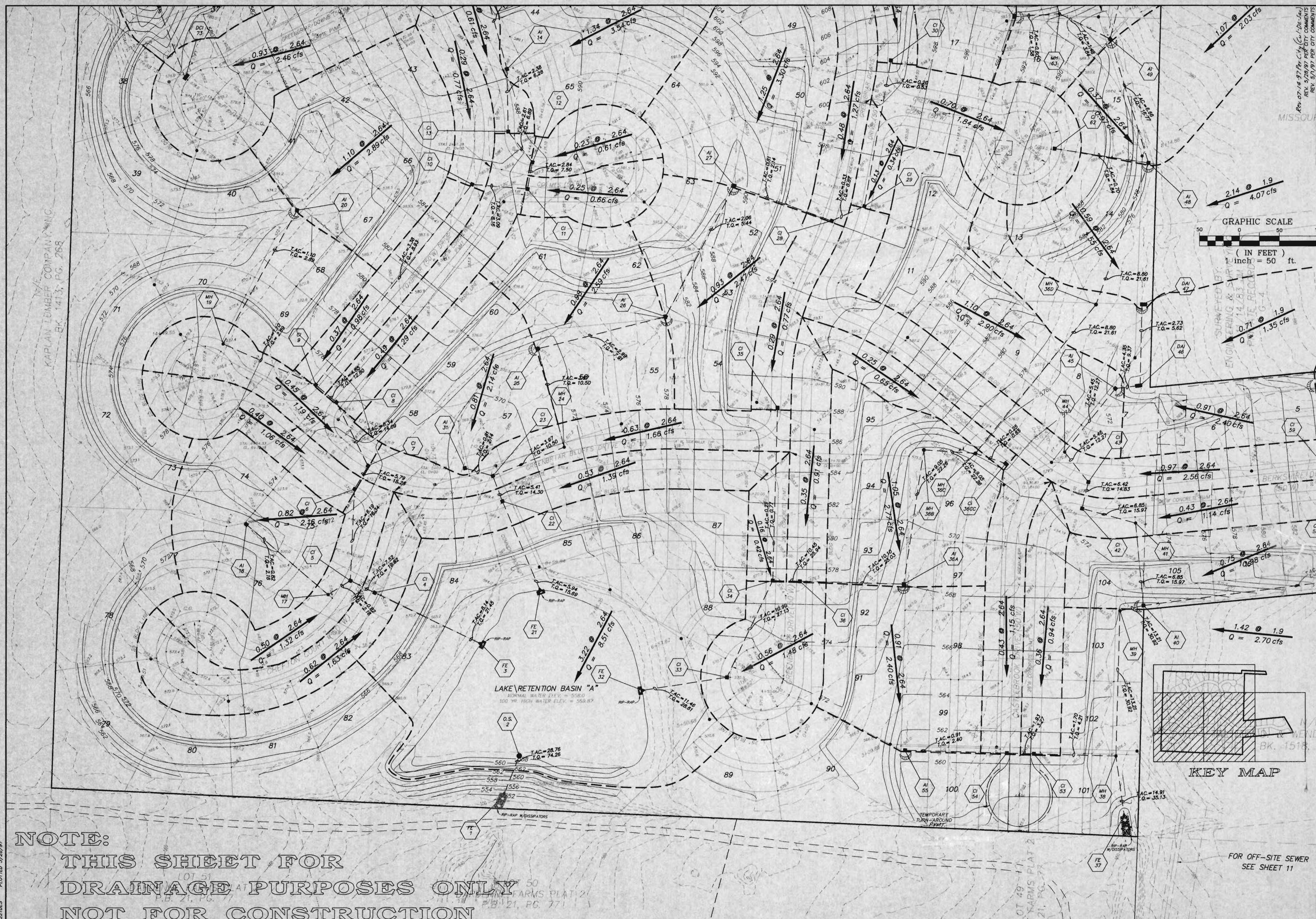
KAPLAN LUMBER COMPANY, INC.  
BK. 1413, PG. 268

BERKSHIRE DOWNS  
DRAINAGE AREA PLAN  
APRIL 1997

SEE SHEET 19

UTILITY NOTE:  
UNDERGROUND FACILITY STRUCTURES AND UTILITIES HAVE BEEN PLOTTED FROM AVAILABLE SURVEYS AND RECORDED INFORMATION AND, THEREFORE, THEIR LOCATIONS MUST BE CONSIDERED APPROXIMATE ONLY. VERIFICATION OF LOCATION OF ALL UNDERGROUND STRUCTURES AND FACILITIES EITHER SHOWN OR NOT SHOWN ON THESE PLANS, SHALL BE THE RESPONSIBILITY OF THE CONTRACTOR.

18  
25



**NOTE:**  
THIS SHEET FOR  
DRAINAGE PURPOSES ONLY  
NOT FOR CONSTRUCTION

FOR OFF-SITE SEWER  
SEE SHEET 11

962210ES PLOTTED 5/28/97

REV. 07.14.97 BY C.S. (C.S. 120-106)  
REV. 07.14.97 BY C.S. (C.S. 120-106)  
REV. 07.14.97 PER CITY COMMENTS

SURVEYED BY:  
ENGINEERING & SURVEYING  
14183 W. STATE ROAD  
P.O. BOX 6-4