

MUSLER ENGINEERING COMPANY
 CIVIL ENGINEERING - PLANNING - LAND SURVEYING
 32 Portwest Court, St. Charles, Missouri 63303
 Telephone: (636) 916-0444
 Fax: (636) 916-3444
 DATE: APRIL 2010
 DRAWN: R.S.M./J.R.S.
 CHECKED: R.S.M./J.R.S.
 PROJECT NO.:
 SHEET NO.: 10-1176

DISCLAIMER OF RESPONSIBILITY
 I hereby specify that the documents intended to be authorized by my seal are limited to this sheet, and I hereby disclaim any responsibility for all other drawings, specifications, estimates, reports or other documents or instruments relating to or intended to be used for any part or parts of the architectural or engineering project or survey.

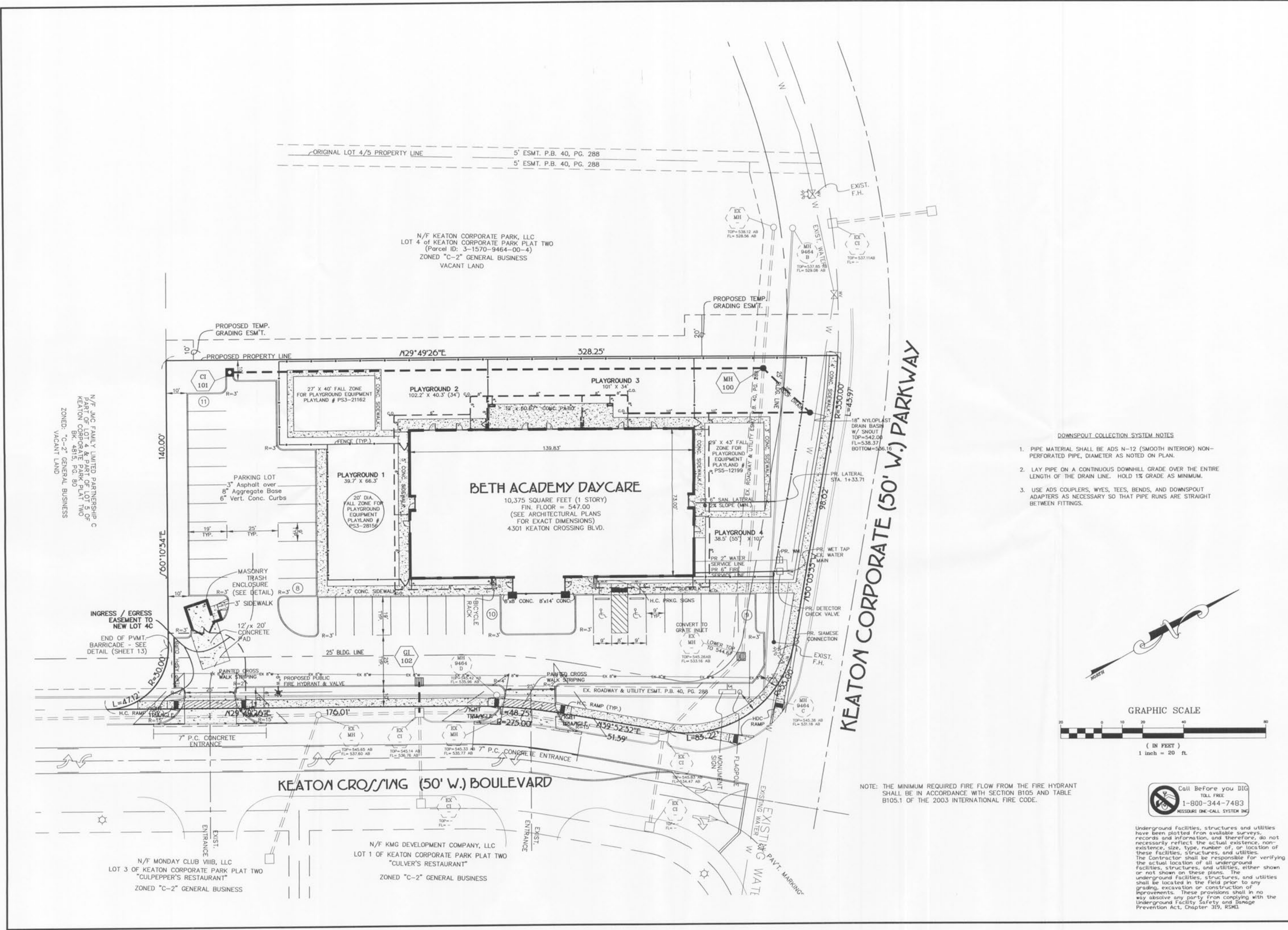


JEFFREY R. SMITH, P.E.
 M.O. P.E. # E-2001004672

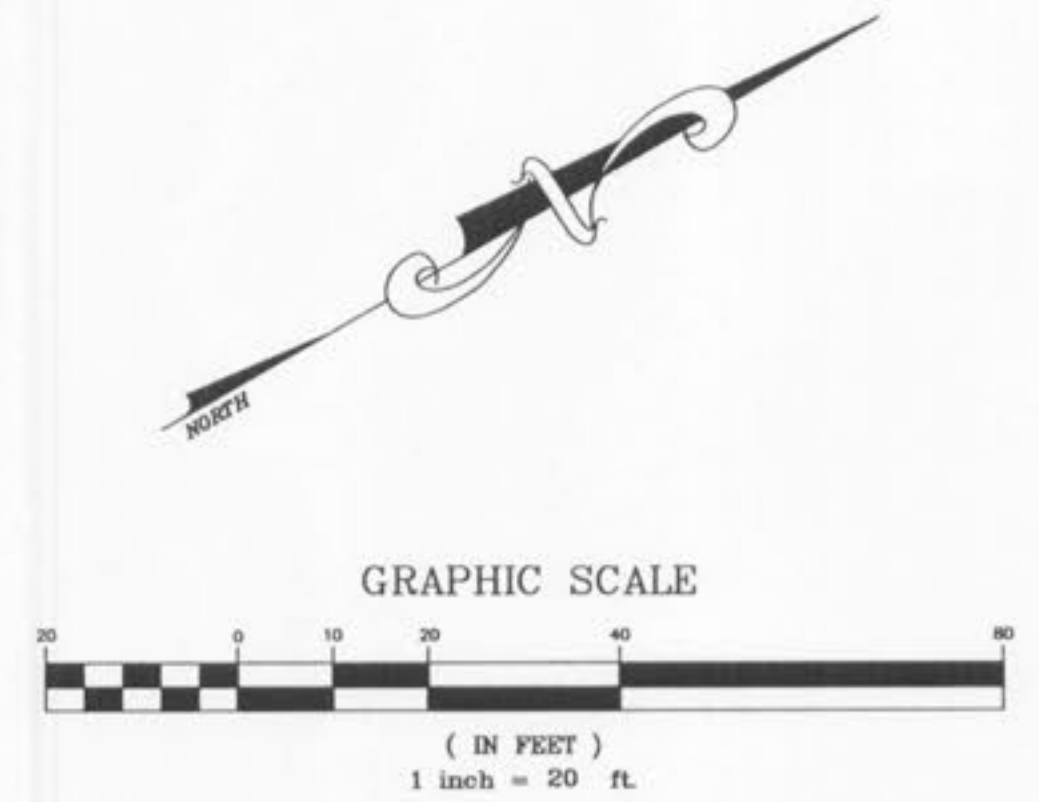
PREPARED FOR:
 BETH HOLDINGS, LLC
 MR. DAVID BETH
 322 COUNTRY MEADOWS DRIVE
 ST. CHARLES, MISSOURI 63303
 TELEPHONE: 314-614-2207
 FAX: 314-553-5078
 E-mail: dbeth01@sbcbglobal.net

P & Z No.
 00-27.17.02 - 4/1/10
 City No.

Page No.
4



- DOWNSPOUT COLLECTION SYSTEM NOTES**
1. PIPE MATERIAL SHALL BE ADS N-12 (SMOOTH INTERIOR) NON-PERFORATED PIPE, DIAMETER AS NOTED ON PLAN.
 2. LAY PIPE ON A CONTINUOUS DOWNHILL GRADE OVER THE ENTIRE LENGTH OF THE DRAIN LINE. HOLD 1% GRADE AS MINIMUM.
 3. USE ADS COUPLERS, WYES, TEES, BENDS, AND DOWNSPOUT ADAPTERS AS NECESSARY SO THAT PIPE RUNS ARE STRAIGHT BETWEEN FITTINGS.



NOTE: THE MINIMUM REQUIRED FIRE FLOW FROM THE FIRE HYDRANT SHALL BE IN ACCORDANCE WITH SECTION B105 AND TABLE B105.1 OF THE 2003 INTERNATIONAL FIRE CODE.



Underground facilities, structures and utilities have been plotted from available surveys, records and information, and therefore, do not necessarily reflect the actual existence, non-existence, size, type, number of, or location of these facilities, structures, and utilities. The Contractor shall be responsible for verifying the actual location of all underground facilities, structures, and utilities, either shown or not shown on these plans. The underground facilities, structures, and utilities shall be located in the field prior to any grading, excavation or construction of improvements. These provisions shall in no way absolve any party from complying with the Underground Facility Safety and Damage Prevention Act, Chapter 319, RSMo.