

A (TO SOUTH)	(0.01Ac)(1.87)	= 0.02 c.f.s.
B (TO WEST)	(0.02Ac)(3.85) + (0.13Ac)(1.87)	= 0.32 c.f.s.
C (ROOF TO MH 100)	(0.29Ac)(4.2)	= 1.22 c.f.s.
D (TO KEATON CORPORATE)	(0.06Ac)(3.85) + (0.09Ac)(1.87)	= 0.40 c.f.s.
E (TO CONVERT GI)	(0.11Ac)(3.85) + (0.03Ac)(1.87)	= 0.48 c.f.s.
F (TO GI 102)	(0.11Ac)(3.85)	= 0.42 c.f.s.
G (TO KEATON CROSSING)	(0.09Ac)(3.85) + (0.05Ac)(1.87)	= 0.44 c.f.s.
H (TO CI 101)	(0.18Ac)(3.85) + (0.07Ac)(1.87)	= 0.82 c.f.s.

NOTE: THERE IS ADEQUATE CAPACITY OF THE OFF-SITE STORM SEWER SYSTEM.

PROJECT TITLE:
BETH ACADEMY
DRAINAGE AREA MAP
PROPOSED

DATE: 7/15/10
ENGINEERING DEPT. COMMENTS:
REVISION:
MUSLER ENGINEERING COMPANY
CIVIL ENGINEERING - PLANNING - LAND SURVEYING
32 Portwest Court, St. Charles, Missouri 63303
Telephone: (636) 916-0444
FAX: (636) 916-0444
CERTIFICATE OF AUTHORITY: 01444-0444
DATE: APRIL 2010
DRAWN: R.S.M./J.R.S.
CHECKED: PROJECT NO.: 10-1170
R.S.M./J.R.S.

DISCLAIMER OF RESPONSIBILITY
I hereby certify that the documents intended to be submitted by my seal are limited to this sheet, and I hereby disclaim any responsibility for all other drawings, specifications, estimates, reports or other documents or instruments relating to or intended to be used for any part or parts of the architectural or engineering project or survey.

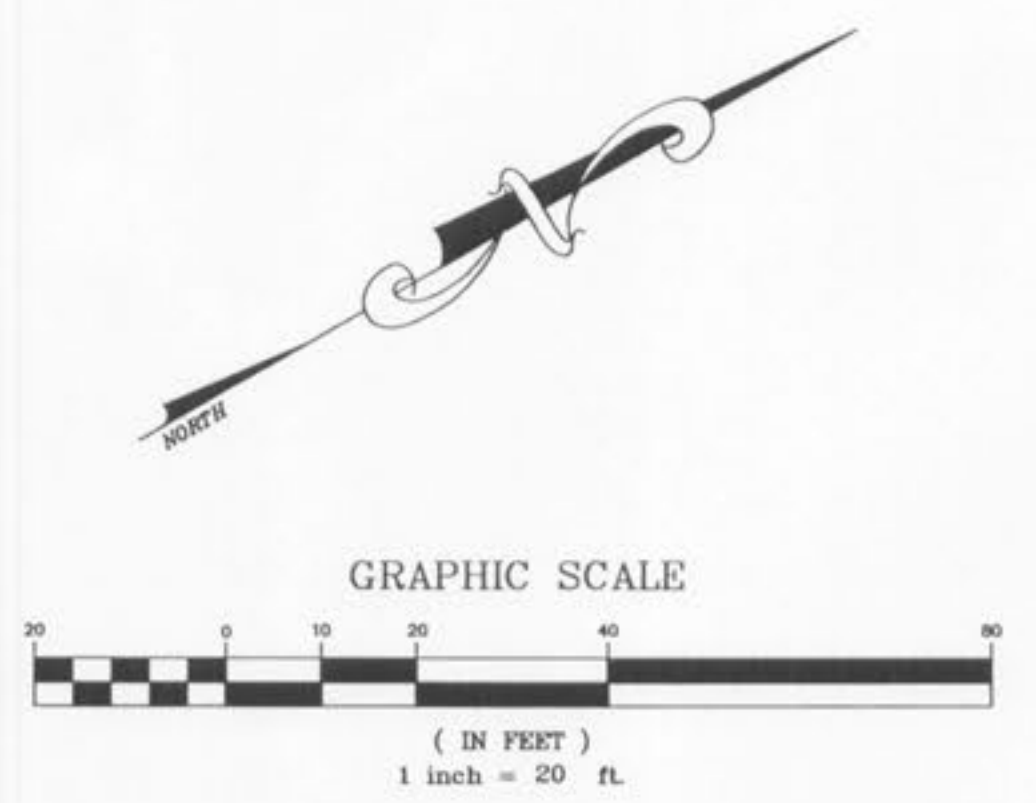
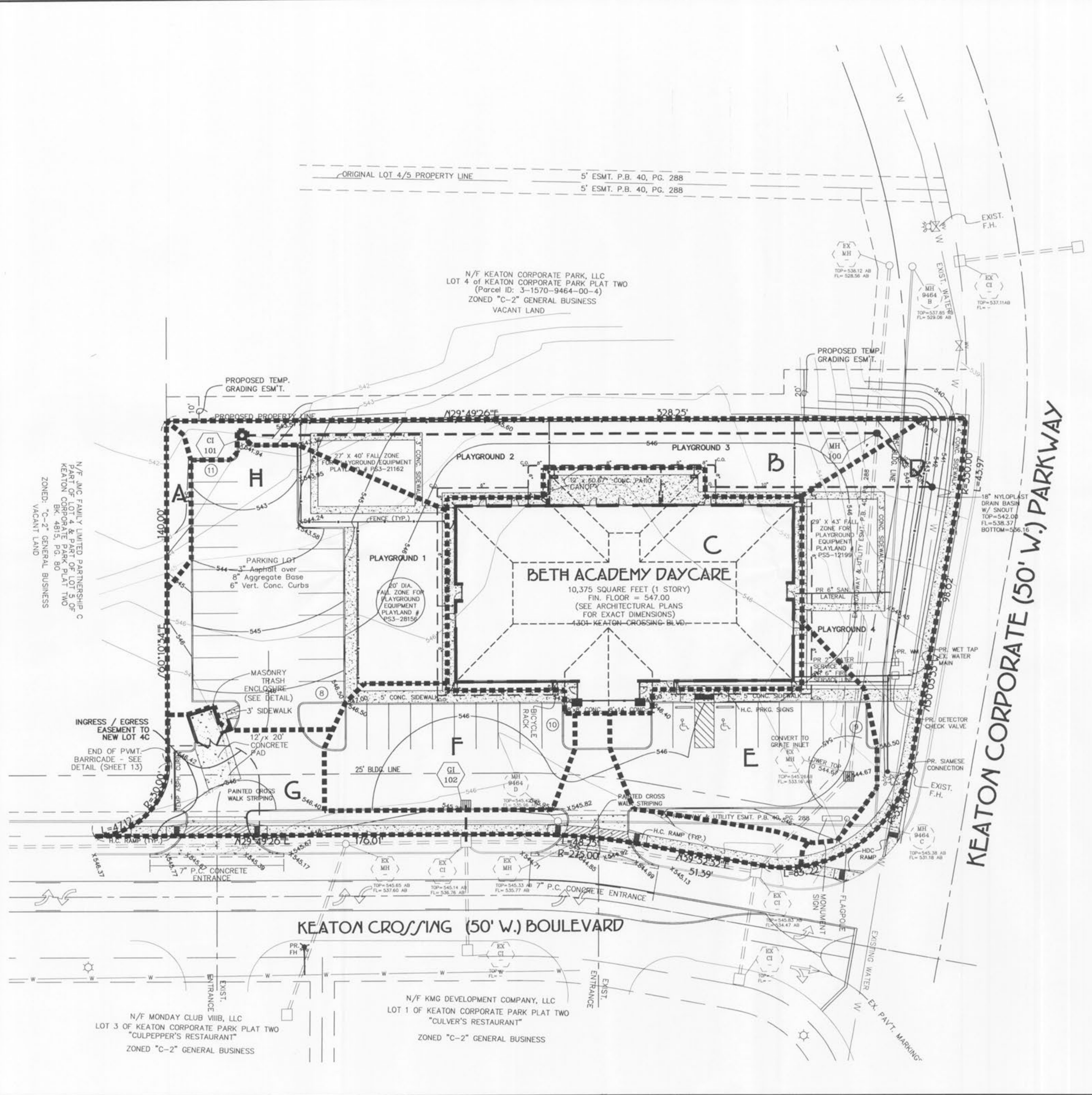


JEFFREY R. SMITH, P.E.
MO. P.E. # E-2001004672

PREPARED FOR:
BETH HOLDINGS, LLC
MR. DAVID BETH
322 COUNTRY MEADOWS DRIVE
ST. CHARLES, MISSOURI 63303
TELEPHONE: 314-614-2207
FAX: 314-553-5078
E-mail: dbeth01@bcgglobal.net

P & Z No.
00-27.17.02 - 4/1/10
City No.

Page No. **7**



Call Before you Dig
TOLL FREE
1-800-344-7483
MISSOURI ONE-CALL SYSTEM INC.

Underground facilities, structures and utilities have been plotted from available surveys, records and information, and therefore, do not necessarily reflect the actual existence, non-existence, size, type, number of, or location of these facilities, structures, and utilities. The Contractor shall be responsible for verifying the actual location of all underground facilities, structures, and utilities, either shown or not shown on these plans. The underground facilities, structures, and utilities shall be located in the field prior to any grading, excavation or construction of improvements. These provisions shall in no way absolve any party from complying with the Underground Facility Safety and Damage Prevention Act, Chapter 319, RSMo.