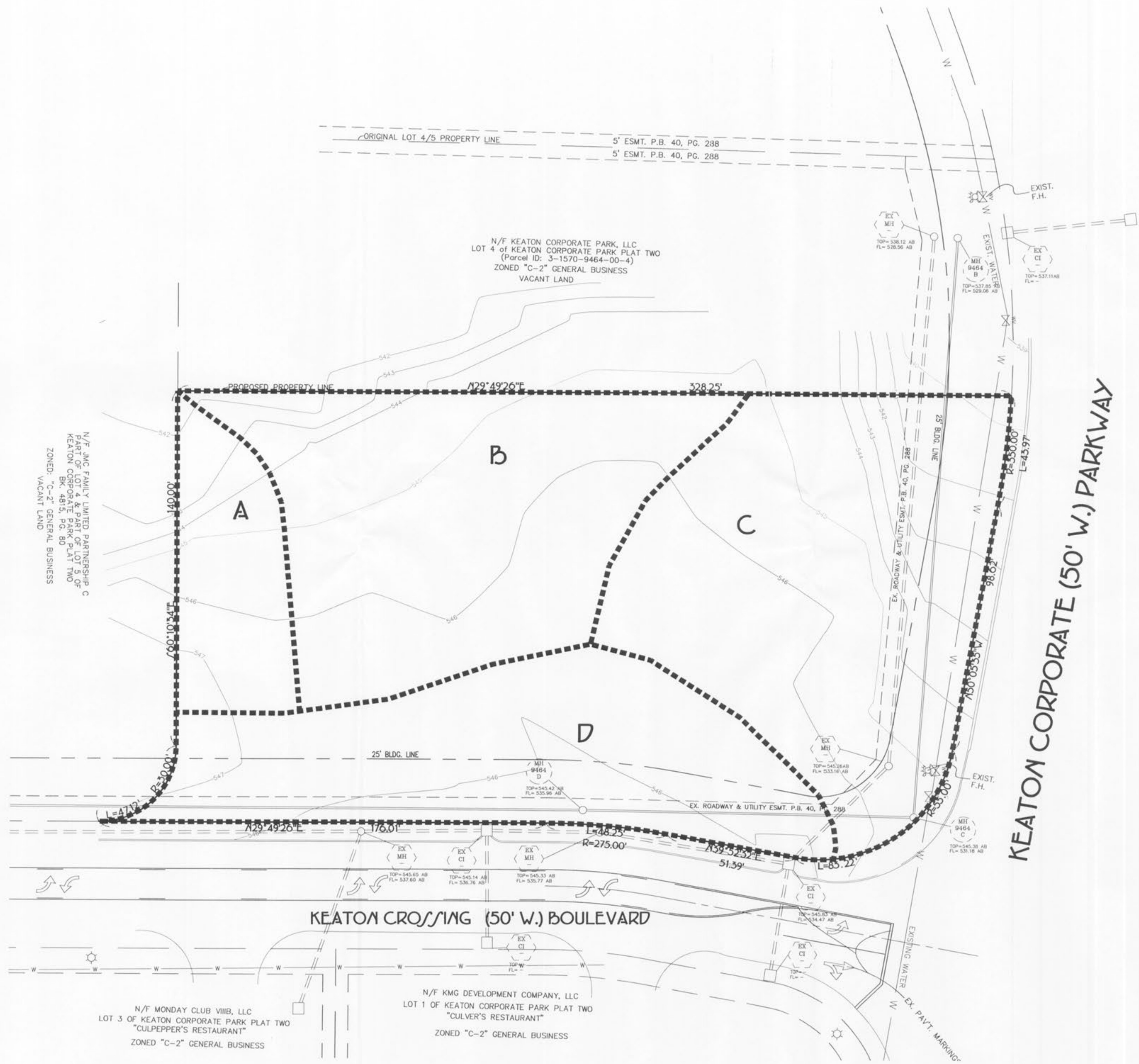


A (TO SOUTH)	(0.11Ac)(1.87)	= 0.21 c.f.s.
B (TO WEST)	(0.38Ac)(1.87)	= 0.71 c.f.s.
C (TO KEATON CORPORATE)	(0.45Ac)(1.87)	= 0.84 c.f.s.
D (TO KEATON CROSSING)	(0.32Ac)(1.87)	= 0.60 c.f.s.



N/F JMC FAMILY LIMITED PARTNERSHIP C
PART OF LOT 4 & PART OF LOT 5 OF
KEATON CORPORATE PARK PLAT TWO
BK. 4815, PG. 80
ZONED: "C-2" GENERAL BUSINESS
VACANT LAND

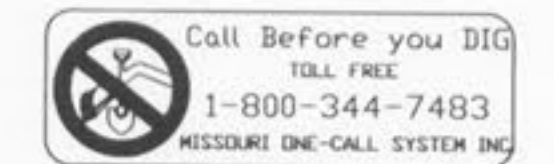
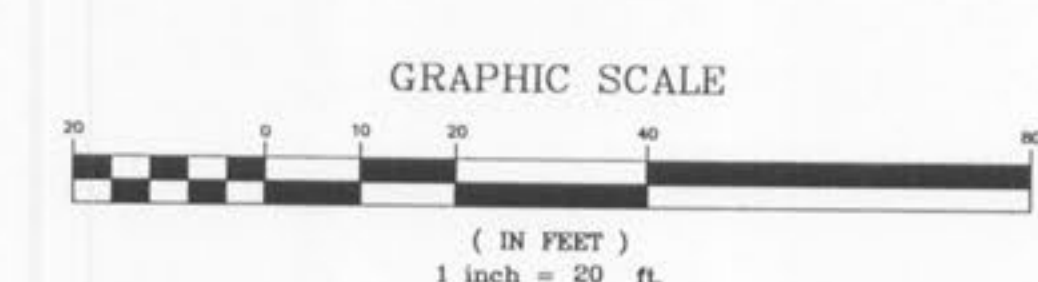
N/F KEATON CORPORATE PARK, LLC
LOT 4 OF KEATON CORPORATE PARK PLAT TWO
(Parcel ID: 3-1570-9464-00-4)
ZONED "C-2" GENERAL BUSINESS
VACANT LAND

N/F MONDAY CLUB VIIIIB, LLC
LOT 3 OF KEATON CORPORATE PARK PLAT TWO
"CULPEPPER'S RESTAURANT"
ZONED "C-2" GENERAL BUSINESS

N/F KMG DEVELOPMENT COMPANY, LLC
LOT 1 OF KEATON CORPORATE PARK PLAT TWO
"CULVER'S RESTAURANT"
ZONED "C-2" GENERAL BUSINESS

KEATON CORPORATE (50' W.) PARKWAY

KEATON CROSSING (50' W.) BOULEVARD



Underground facilities, structures and utilities have been plotted from available surveys, records and information, and therefore, do not necessarily reflect the actual existence, non-existence, size, type, number of, or location of these facilities, structures, and utilities. The Contractor shall be responsible for verifying the actual location of all underground facilities, structures, and utilities, either shown or not shown on these plans. The underground facilities, structures, and utilities shall be located in the field prior to any grading, excavation or construction of improvements. These provisions shall in no way absolve any party from complying with the Underground Facility Safety and Damage Prevention Act, Chapter 319, RSMo.

PROJECT TITLE:
BETH ACADEMY
DRAINAGE AREA MAP
EXISTING

DATE: APRIL 2010
DRAWN: R.S.M./J.R.S.
CHECKED: R.S.M./J.R.S.
PROJECT NO.: 10-1178
SHEET NO.: 8

MUSLER ENGINEERING COMPANY
MUSLER ENGINEERING - PLANNING - LAND SURVEYING
32 Portwest Court, St. Charles, Missouri 63303
Telephone: (636) 916-0444
Fax: (636) 916-9444
CERTIFICATE OF AUTHORITY: ENGINEERING: E-1256-2, LAND SURVEYING: LS-284-0

DISCLAIMER OF RESPONSIBILITY
I hereby specify that the documents intended to be authenticated by my seal are limited to the work, and I hereby disclaim any responsibility for all other Drawings, Specifications, Estimates, Reports or other documents or instruments relating to or intended to be used for any part or parts of the architectural or engineering project or survey.



JEFFREY R. SMITH, P.E.
MO. P.E. # E-2001004672

PREPARED FOR:
BETH HOLDINGS, LLC
MR. DAVID BETH
322 COUNTRY MEADOWS DRIVE
ST. CHARLES, MISSOURI 63303
TELEPHONE: 314-614-2207
FAX: 314-553-5078
E-mail: dbeth01@sbcglobal.net

P & Z No.
00-27.17.02 - 4/1/10
City No.

Page No.
8