

PLANT_SCHEDULE

2010-01-27 16:20

39,38,48,77,176,15,209,72; TREES QTY BOTANICAL/COMMON SIZE
 OGRM 3 Acer rubrum 'October Glory' / 'October Glory' Maple 2.5" Cal
 CRB 2 Betula nigra 'Cully' / Heritage River Birch 10"-12"
 HACK 3 Celtis occidentalis / Common Hackberry 2.5" Cal
 SHL 2 Gleditsia triacanthos 'Skyline' / 'Skyline' Locust 2.5" Cal
 SWO 3 Quercus bicolor / Swamp White Oak 2.5" Cal
 GL 3 Tilia cordata 'Greenspire' / Greenspire Littleleaf Linden 2.5" Cal

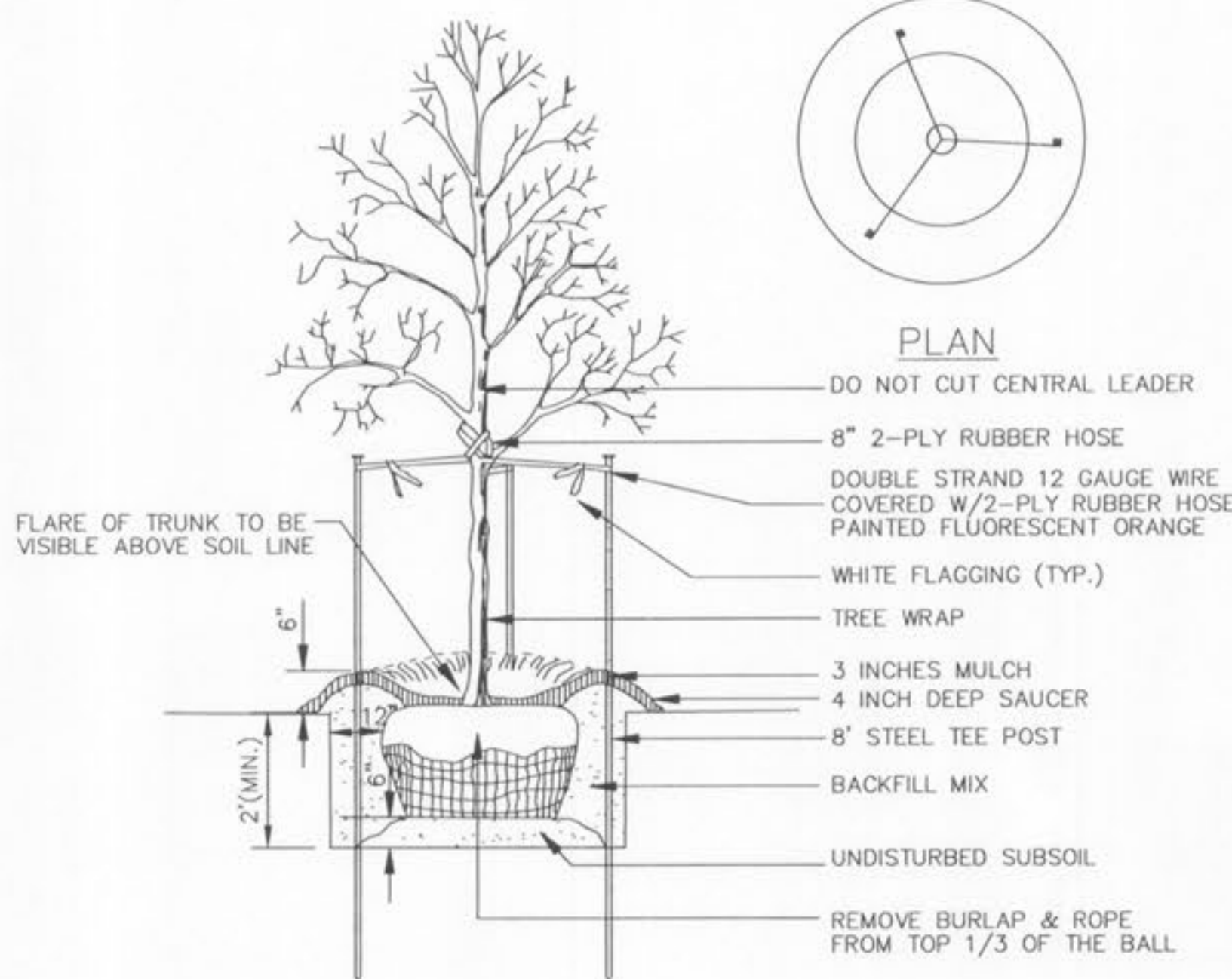
EVERGREEN TREES QTY BOTANICAL/COMMON SIZE
 EMARB 16 Thuja occidentalis 'Emerald' / Emerald Arborvitae 5'-6'

FLOWERING TREES QTY BOTANICAL/COMMON SIZE
 RB 3 Cercis canadensis / Redbud 2" Cal
 SFC 2 Malus 'Snowdrift' / Snowdrift Crabapple 2" Cal

SHRUBS QTY BOTANICAL/COMMON SIZE
 DBB 5 Euonymus alatus 'Compactus' / Compact Burning Bush 18"-24"
 CH 15 Ilex meserveae 'China Boy/Girl' TM / China Boy/Girl Holly 5 gal
 YAJUN 19 Juniperus horizontalis 'Youngstown' / Compact Youngstown Andorra Juniper 5 gal
 BAY 3 Myrica pensylvanica / Northern Bayberry 24"-30"
 DKL 6 Syringa meyeri 'Palibin' / Dwarf Korean Lilac 5 gal
 DY 5 Taxus media 'densiformis' / Dense Yew 18"-24"

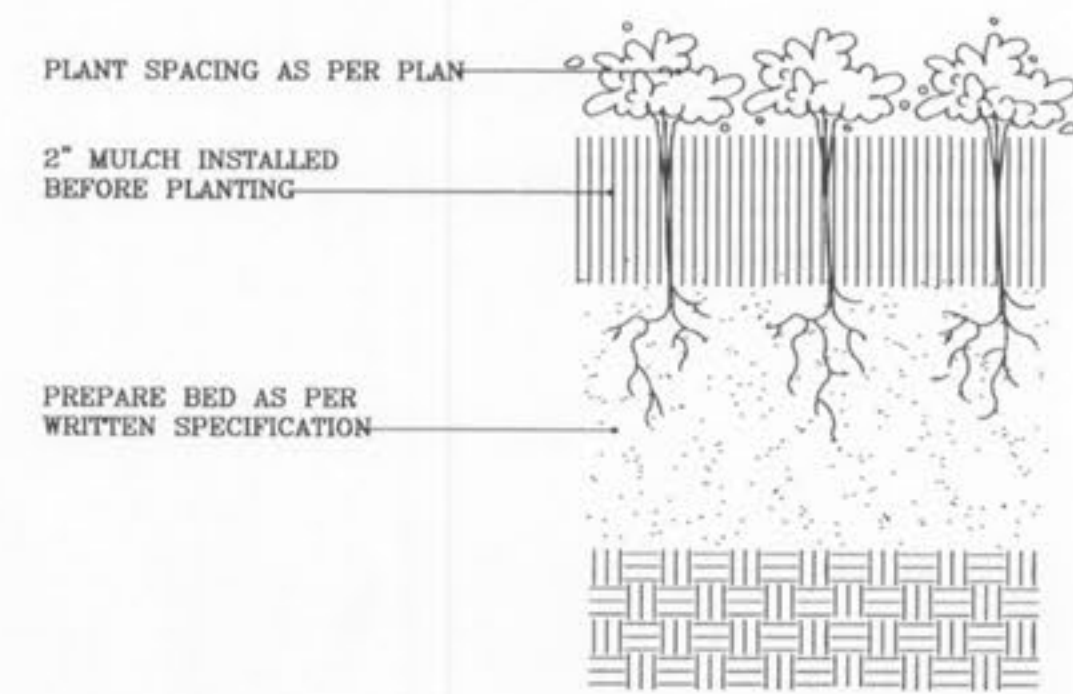
ANNUALS/PERENNIALS QTY BOTANICAL/COMMON SIZE
 HRD 21 Hemerocallis hybrid 'Happy Returns' / Happy Returns Daylily 1 gal
 BBL 16 Liriope muscari 'Big Blue' / Big Blue Liriope 1 gal

GROUND COVERS QTY BOTANICAL/COMMON SIZE
 242 Euonymus fortunei coloratus / Purpleleaf Winter Creeper 2.25" Pot @ 12" oc
 569 Min. of Five Varieties / Mixed Annuals 2.25" Pot @ 12" oc

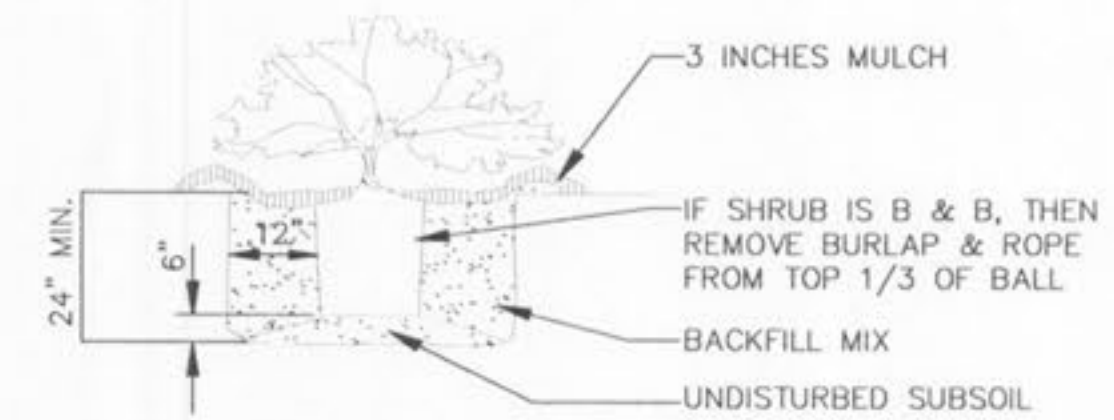


DECIDUOUS TREE PLANTING

N.T.S.



PERENNIAL / ANNUAL PLANTING



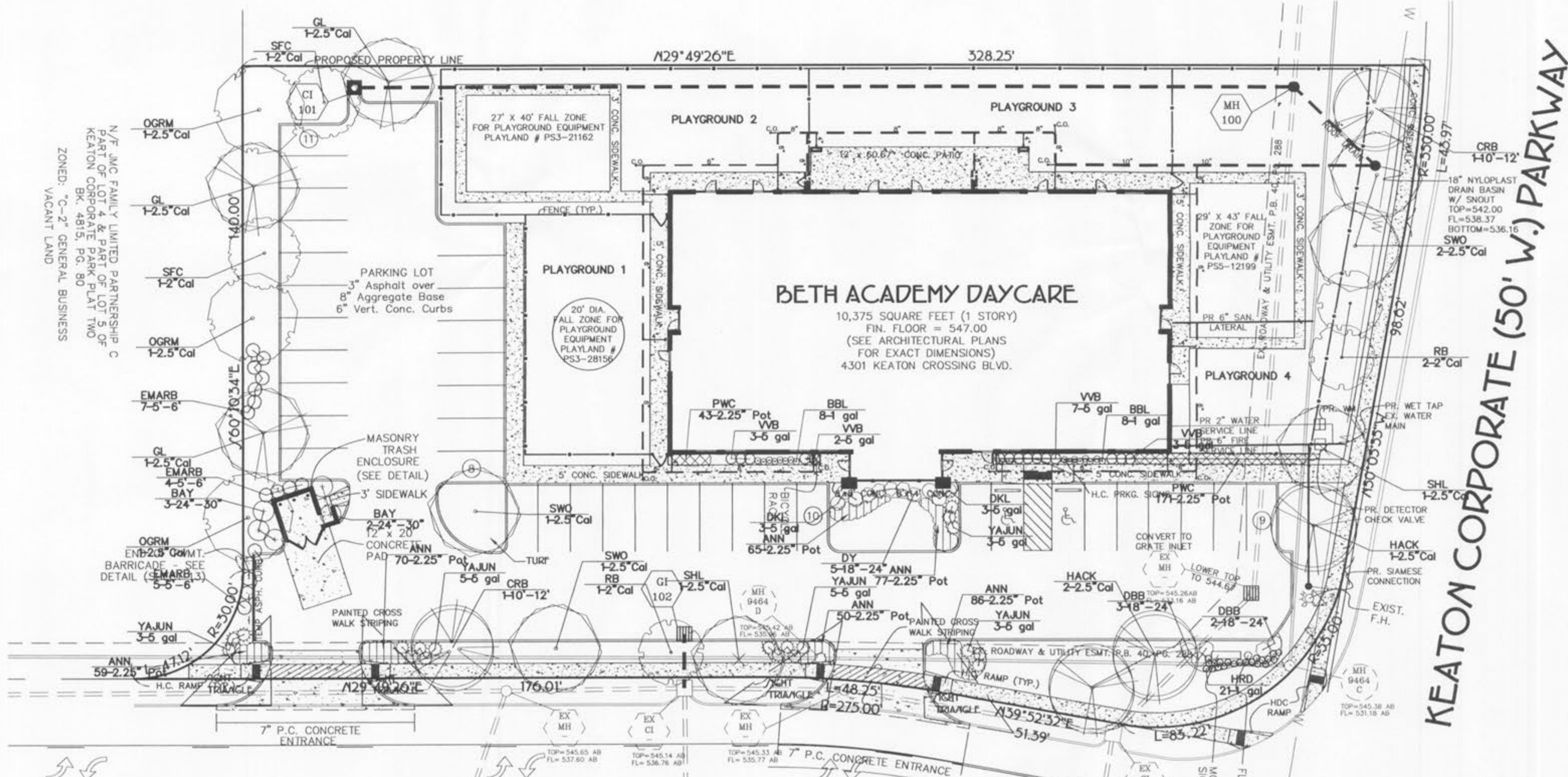
NOTE: USE SHREDDED BARK MULCH ONLY

SHRUB PLANTING

N.T.S.

LANDSCAPE GUIDELINE SPECS:

- GENERAL:
- All natural vegetation shall be maintained where it does not interfere with construction or the permanent plan of operation. Every effort possible shall be made to protect existing structures or vegetation from damage due to equipment usage. Contractor shall at all times protect all materials and work against injury to public. The landscape contractor shall be responsible for any construction work other site related work being performed by other contractors. Refer to architectural drawings for further coordination of work to be done.
 - Underground facilities, structures and utilities must be considered approximately only. There may be others not presently known or shown. It shall be the landscape contractor's responsibility to determine and verify the existence of any and exact location of the above (Call 1-800-DC-811).
 - Plant materials are to be planted in the same relationship to grade as was grown in nursery conditions. All planting beds shall be cultivated to a depth minimum and graded smooth immediately before planting of plants. Plant groundcover to within 12" of trunk of trees or shrubs planted within the area.
 - It shall be the landscape contractor's responsibility to:
 - Verify all existing and proposed features shown on the drawings prior to commencement of work.
 - Report all discrepancies found with regard to existing conditions or proposed design to the landscape architect immediately for a decision.
 - Obtain the approval of the owner's representative or landscape architect prior to installation.
 - Items shown on this drawing take precedence over the material it shall be the contractor's responsibility to provide for inspection of the work. No substitutions of type or size of plant material will be accepted without written approval from the landscape architect.
 - Provide single-stem trees unless otherwise noted in plant schedule.
 - All plant materials shall comply with the recommendations and requirements of ANSI Z601.1 "American Standards for Nursery Stock".
 - It shall be the contractor's responsibility to provide for inspection of the plant material by the Landscape Architect prior to installation. Plants not conforming exactly to the plant list will not be accepted and shall be replaced at the landscape contractor's expense.
 - All bids are to have unit prices listed. The Owner has the option to delete any portion of the contract prior to signing the contract or beginning work. This will be a unit price contract.
 - All plant material to be transported shall be transported according to guidelines set by ANSI standards. Transplanted material will not be guaranteed by the landscape contractor.
- INSURANCE:
- The landscape contractor shall submit certificates of insurance for workmen's compensation and general liability.
- MULCH:
- All mulch to be shredded oak bark mulch at 3" depth (after compaction) unless otherwise noted. Mulch shall be clean and free of all foreign materials, including weeds, mold, deleterious materials, etc. No plastic sheeting or filter fabric shall be placed beneath shredded bark mulch beds. Mylar fabric shall be used beneath all gravel mulch beds. Edge of beds with 3/4" x 1/2" fabric unless otherwise noted.
- MAINTENANCE:
- Landscape Contractor shall provide a separate proposal to maintain all plants, shrubs, groundcover, perennials and annuals for a period of 12 months after acceptance.
 - Contractor shall ensure that only competent and trained personnel shall provide such services and that such services be provided in a timely manner.
- TOPSOIL:
- Topsoil mix for all proposed landscape plantings shall be five (5) parts well-drained screened organic topsoil to one (1) part Canadian sphagnum peat moss as per planting details. Refer to topsoil mix to a depth of 8" minimum and grade smooth.
 - Provide a soil analysis, as requested, made by an independent soil-testing agency outlining the % of organic matter, inorganic matter, deleterious material, pH and mineral content.
 - Any foreign topsoil used shall be free of roots, stumps, weeds, brush, stones (larger than 1"), litter or any other extraneous or toxic material.
 - Landscape contractor to apply pre-emergent herbicide to all planting beds upon completion of planting operations and before application of shredded bark mulch.
- MISC MATERIAL:
- Provide shingles and deckings of sound, new hardwood, free of knots and defects.
 - Tree wrap tape shall be 4" minimum, designed to prevent bark damage and winter freezing. Additionally, only 3-ply tynex material shall be used.
- TURF:
- All disturbed lawn areas to be seeded with a mixture of Turf-Type Fescue (30% per acre) and Stingergrass (10% per acre). Lawn areas shall be immediately watered for a period of 90 days from date of final acceptance. Bare areas more than one square foot per any 50 square feet shall be replaced.
 - Landscape contractor shall offer an alternate price for sod in lieu of seed. Sod shall be cut to a uniform thickness of 3/4". No broken pieces, irregular pieces or torn pieces will be accepted. Any points carrying concentrated water loads and all slopes of 15% or greater shall be sodded.
 - All sod shall be placed a maximum of 24 hours after harvesting.
 - Recondition existing lawn areas damaged by Contractor's operations including equipment/material storage and movement of vehicles.
- WARRANTY:
- All plant material (excluding ground cover, perennials and annuals) are to be warranted for a period of 12 months after installation at 100% of the installed price.
 - Any plant material found to be defective shall be removed and replaced within 30 days of notification or in growth season determined to be best for that plant.
 - Only one replacement per tree or shrub shall be required of the end of the warranty period, unless loss is due to failure to comply with warranty.
 - Lawn establishment period will be in effect once the lawn has been mowed three times. Plant establishment period shall commence on the date of acceptance and 100% completion.



LANDSCAPE REQUIREMENTS:
 STREET TREES: ONE (1) TREE PER FORTY (40) LIN. FT. OF FRONTAGE 501.46 LIN. FT. OF FRONTAGE; THEREFORE, THIRTEEN (13) TREES ARE REQUIRED/PROVIDED
 OPEN SPACE: ONE (1) TREE PER 3,000 SQ. FT. OF OPEN SPACE 23,313.25 SQ. FT. OF OPEN SPACE; THEREFORE, EIGHT (8) TREES ARE REQUIRED/PROVIDED

KEATON CROSSING (50' W.) BOULEVARD



Call Before you DIG
 TOLL FREE
 1-800-344-7483
 MISSOURI ONE-CALL SYSTEM INC.

Underground facilities, structures and utilities have been plotted from available surveys, records and information, and therefore, do not necessarily reflect the actual existence, non-existence, size, type, number of, or location of these facilities, structures, and utilities. The Contractor shall be responsible for verifying the actual location of all underground facilities, structures, and utilities, either shown or not shown on these plans. The underground facilities, structures, and utilities shall be located in the field prior to any grading, excavation or construction of improvements. These provisions shall in no way absolve any party from complying with the Underground Facility Safety and Damage Prevention Act, Chapter 319, RSMo.

PROJECT TITLE:
BETH ACADEMY
 LANDSCAPE PLAN

landscape TECHNOLOGIES
 (636) 928-1250
 (636) 928-4563
 67 Jacobs Creek Drive
 St. Charles, Missouri 63304

DISCLAIMER OF RESPONSIBILITY
 I hereby specify that the documents intended to be authorized by my seal are limited to this sheet, and I hereby disclaim any responsibility for all other Drawings, Specifications, Estimates, Reports or other documents or instruments relating to or intended to be used for any part or parts of the architectural or engineering project or survey.

PREPARED FOR:
 BETH HOLDINGS, LLC
 MR. DAVID BETH
 322 COUNTRY MEADOWS DRIVE
 ST. CHARLES, MISSOURI 63303
 TELEPHONE: 314-614-2207
 FAX: 314-553-5078
 E-mail: dbeth01@sbcbgobal.net

P & Z No.
 00-27.17.02 - 4/1/10
 City No.

Page No.
9