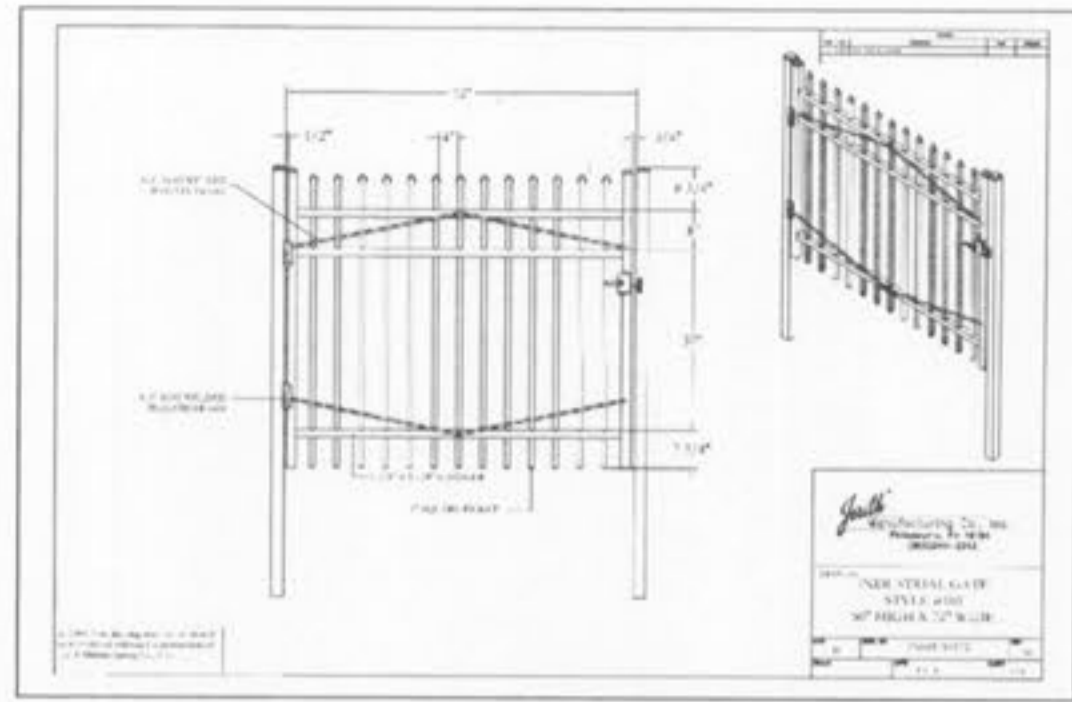


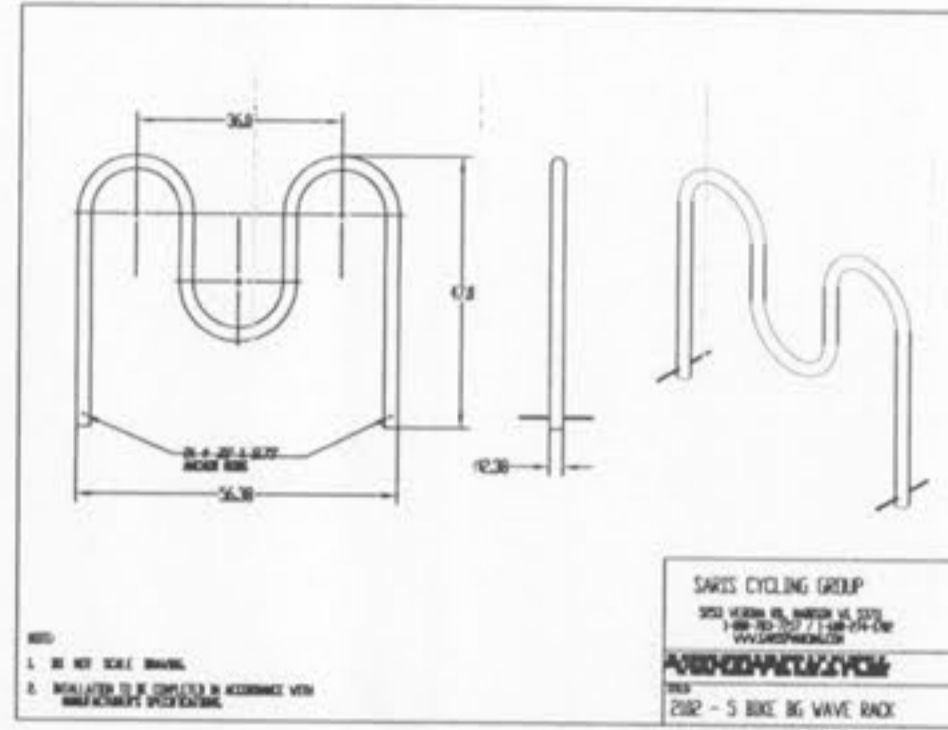
FENCE DETAIL

Not to scale



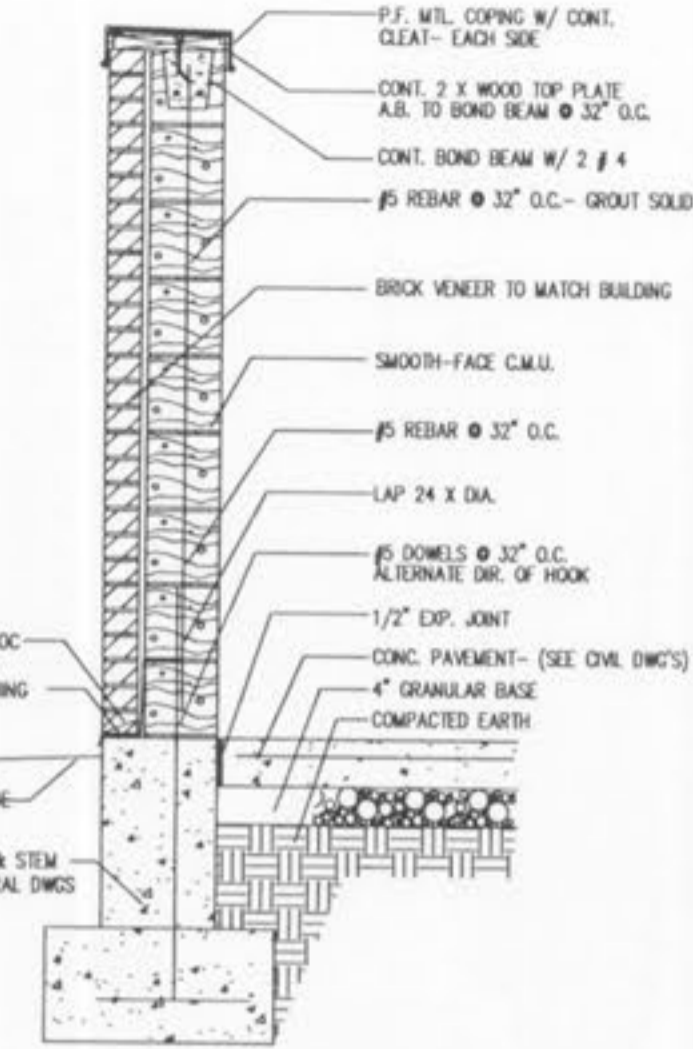
GATE DETAIL

Not to scale

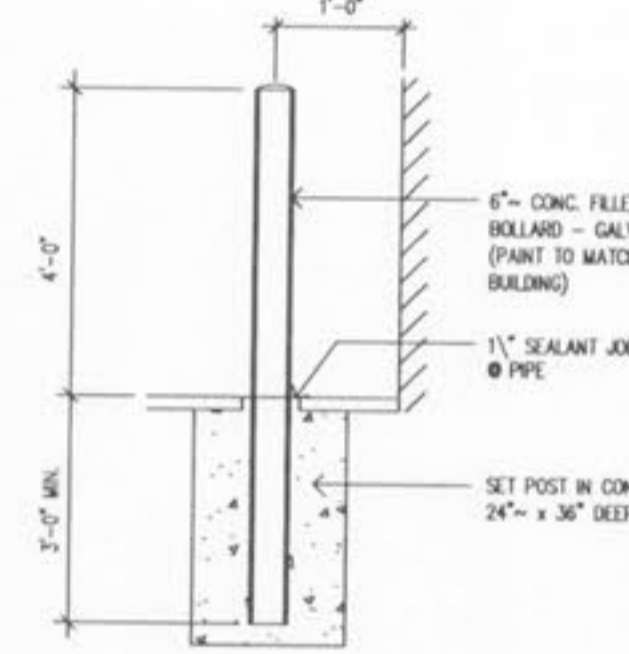


BIKE RACK DETAIL

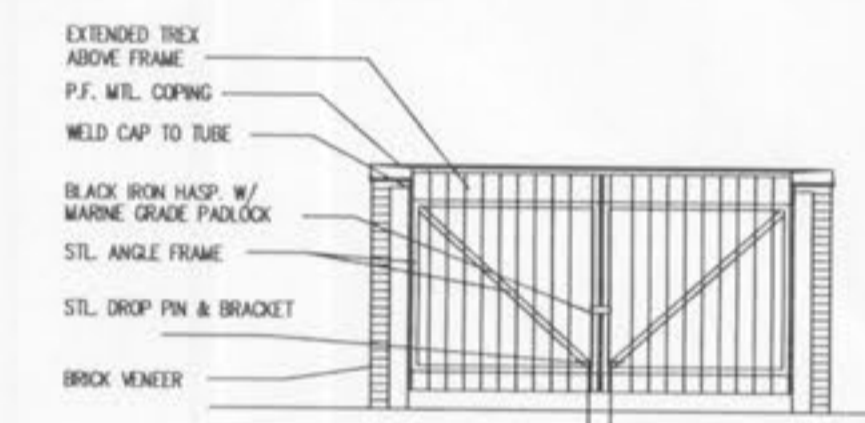
Not to scale



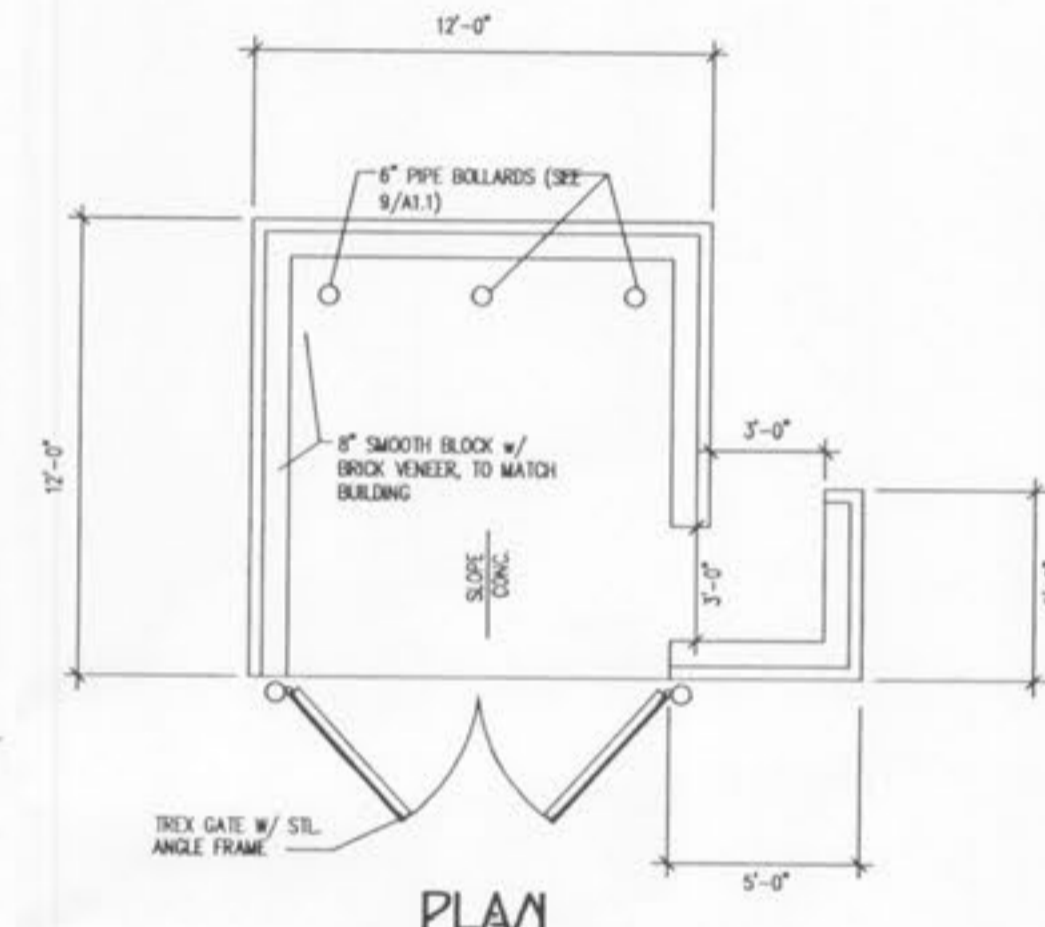
SECTION



PIPE BOLLARD



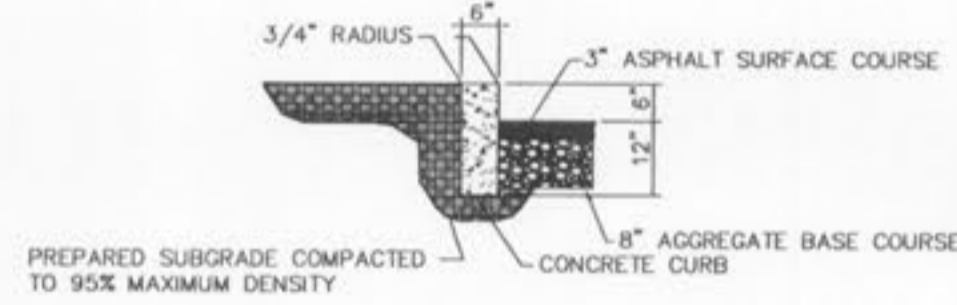
GATE



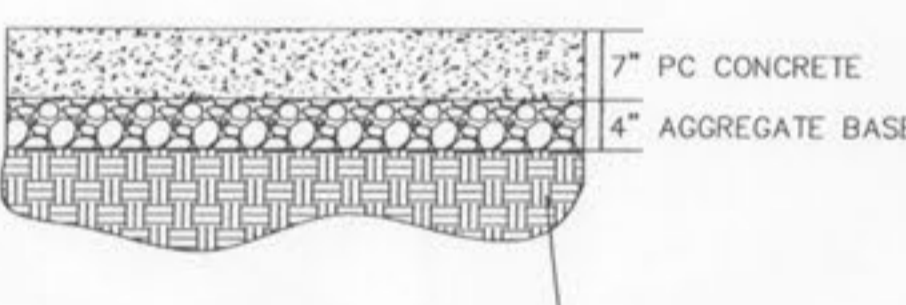
PLAN

TRASH ENCLOSURE DETAILS

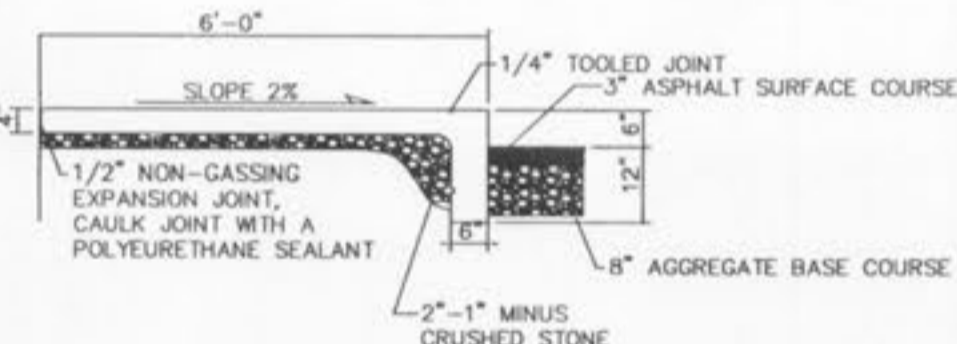
Not to scale



TYPICAL CURB



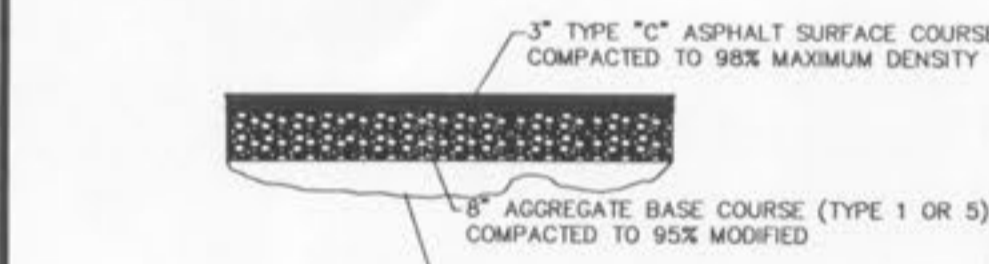
ENTRANCE PAVEMENT DETAIL



TYPICAL SIDEWALK/CURB

CURB & PAVEMENT DETAILS

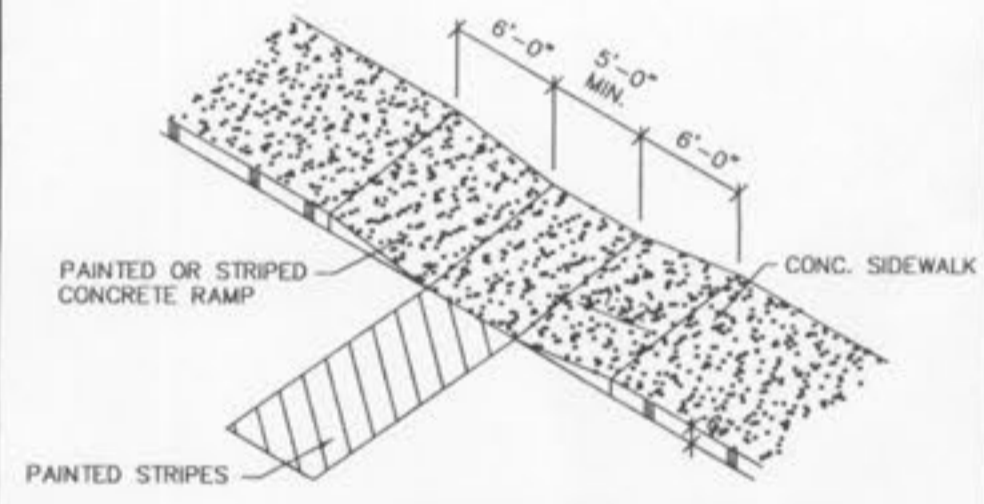
Not to scale



ASPHALT PAVEMENT DETAIL

Not to scale

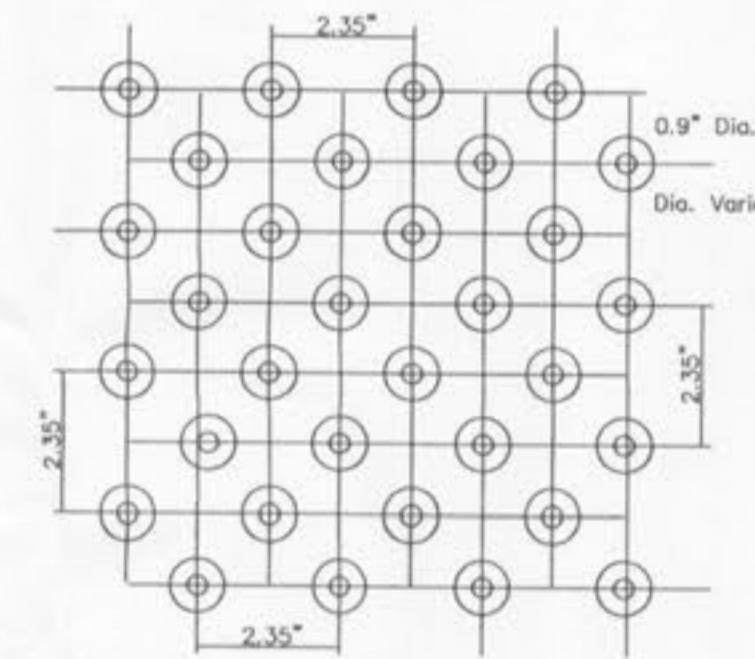
ALL NON-REINFORCED CONCRETE SHALL BE 4,000 PSI AT 28 DAYS



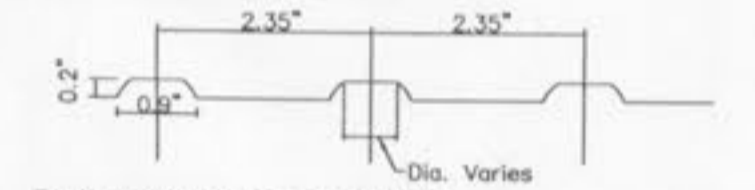
HANDICAPPED RAMP DETAIL

NOT TO SCALE

NOTE: DETECTABLE WARNING TO BE LOCATED 2' BACK FROM FACE OF RAMP, THE WIDTH OF THE RAMP, PER CITY OF O'FALLON.

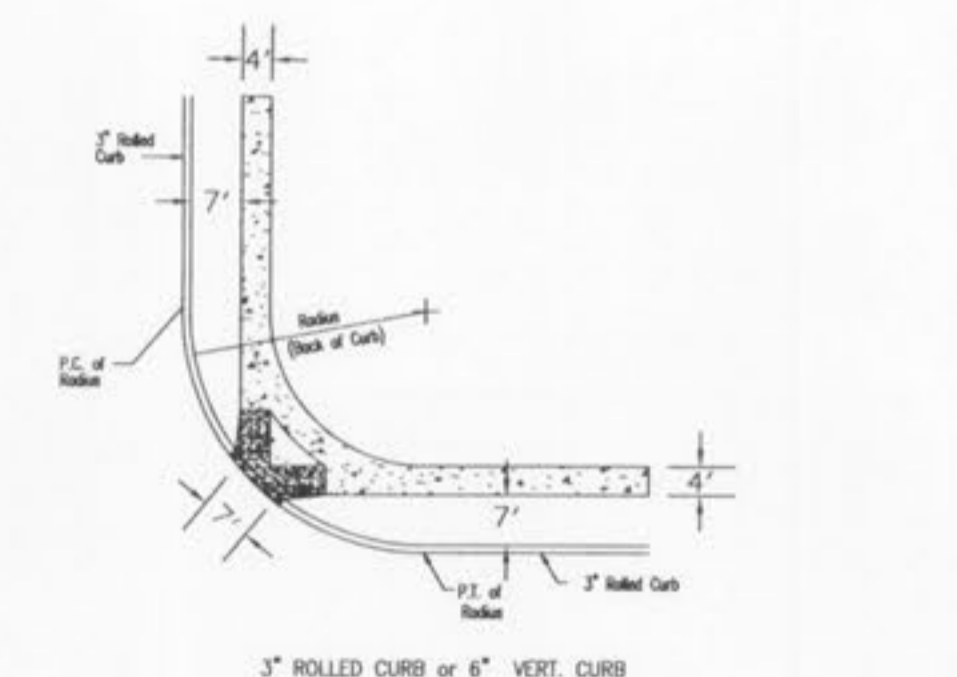


Detectable Warning Pattern



Detectable Warning Section

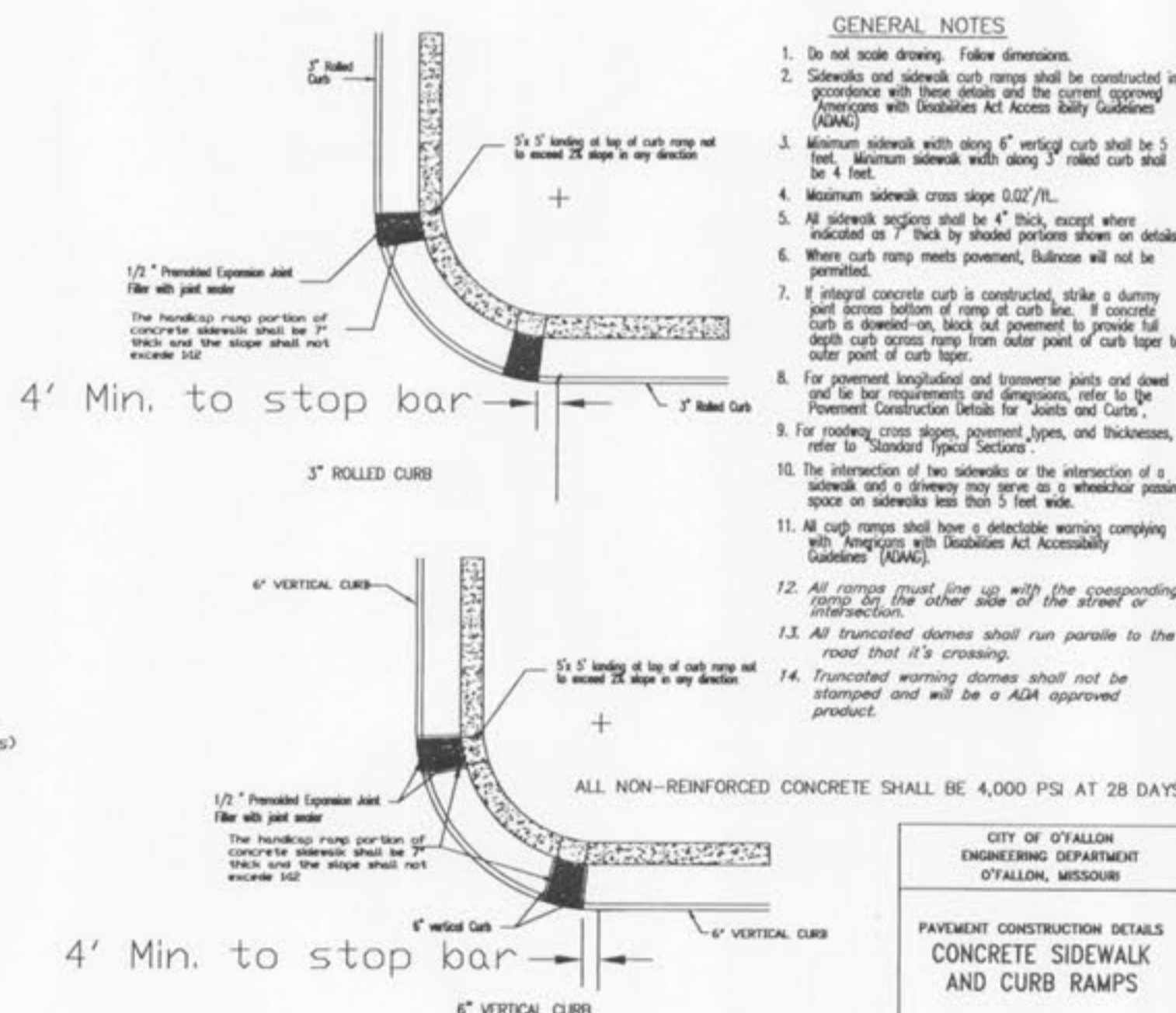
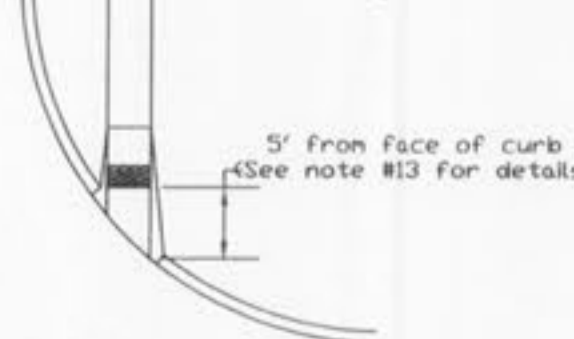
Detectable Warnings to be stamped into concrete using "Symons Color Hardener in Brick Red" or equal.



TYPICAL SIDEWALK INSTALLATION

(WITH MEDLOCK CURB RAMP - TYPE 7)

Placement of Truncated Domes



Handicapped Ramp Detail

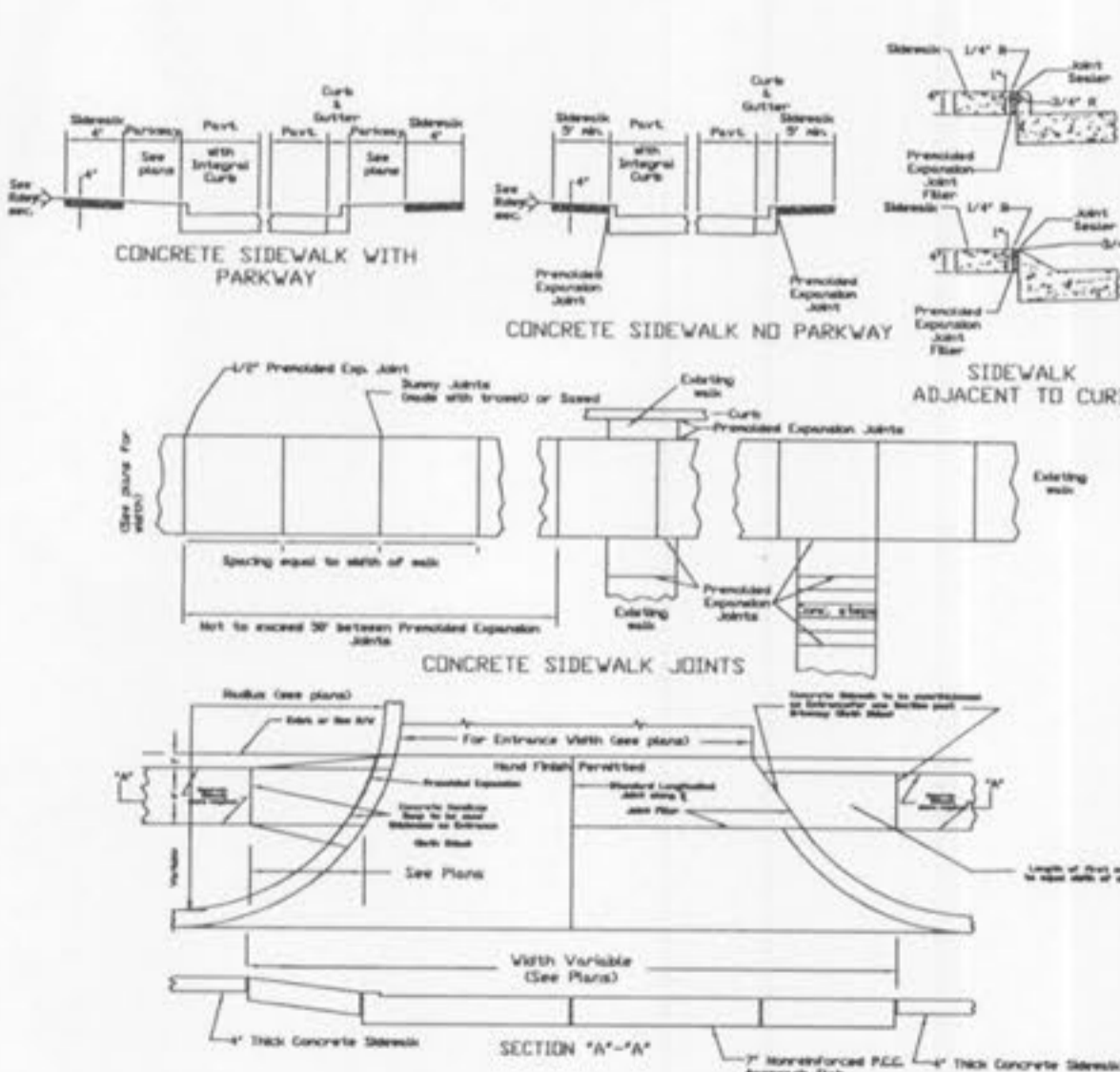
ALL NON-REINFORCED CONCRETE SHALL BE 4,000 PSI AT 28 DAYS

GENERAL NOTES

- Do not scale drawing. Follow dimensions.
- Sidewalks and sidewalk curb ramps shall be constructed in accordance with these details and the current economy (AGM).
- Minimum sidewalk width along 6" vertical curb shall be 5 feet. Minimum sidewalk width along 3" rolled curb shall be 4 feet.
- Maximum sidewalk cross slope 0.02%/ft.
- All sidewalk sections shall be 4" thick, except where indicated as 1" back by shaded portions shows or details.
- Where curb ramp meets pavement, bullnose will not be permitted.
- If sloped concrete curb is constructed, strike a dummy part across bottom of ramp at curb line. If concrete curb is double-sloped, back to pavement to provide full depth curb across ramp from outer point of curb taper to outer point of curb taper.
- For pavement longitudinal and transverse joints and dowel and tie bar requirements and dimensions, refer to the "Pavement Construction Details for Streets and Curb".
- For roadway cross slopes, pavement types, and thicknesses, refer to "Standard Typical Sections".
- The intersection of two sidewalks or the intersection of a sidewalk and a driveway may serve as a structural crossing space on sidewalks less than 5 feet wide.
- All curb ramps shall have a detectable warning complying with Americans with Disabilities Act Accessibility Guidelines (AGM).
- All ramps must line up with the corresponding ramp on the other side of the street or intersection.
- All truncated domes shall run parallel to the road that it's crossing.
- Truncated warning domes shall not be stamped and will be a AGA approved product.

CITY OF O'FALLON
ENGINEERING DEPARTMENT
O'FALLON, MISSOURI

PAVEMENT CONSTRUCTION DETAILS
CONCRETE SIDEWALK
AND CURB RAMP



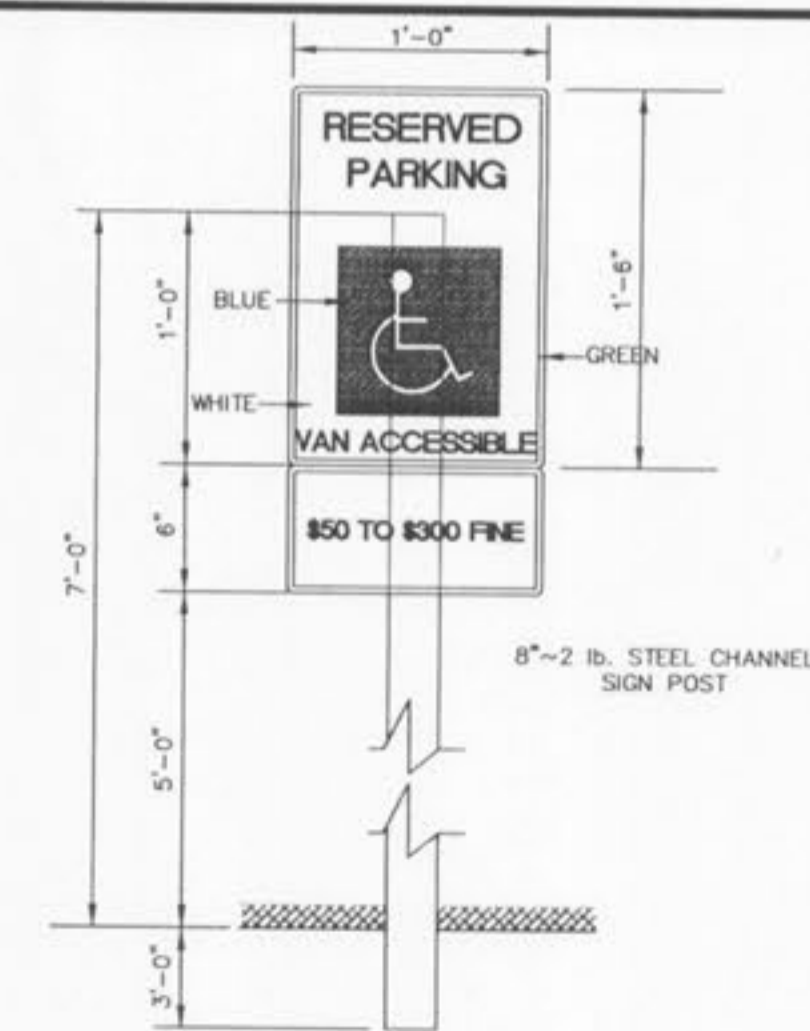
ALL NON-REINFORCED CONCRETE SHALL BE 4,000 PSI AT 28 DAYS

GENERAL NOTES

- Do not scale drawing. Follow dimensions.
- Sidewalk cross slope 0.02%/ft.
- Sidewalk thickness increases to 6" on each side of Private Driveways and 7" on each side of Commercial Driveways for one section of sidewalk equal in length to the width of the sidewalk. See "Entrance Construction Details".
- For sidewalk locations on Cur-De-Solee see "Pavement Construction Details".
- For longitudinal and transverse joints, dowel, and tie bar requirements and dimensions refer to the "Integral Curb Pavement Typical Sections and Details".
- For roadway cross slopes, pavement types, and thickness, refer to "Standard Typical Section".

CITY OF O'FALLON
ENGINEERING DEPARTMENT
O'FALLON, MISSOURI

CONCRETE SIDEWALK
THROUGH
COMMERCIAL ENTRANCES



- ALL LETTERING & BORDERS ARE GREEN
- HANDICAP LOGO SQUARE IS BLUE
- BACKGROUND IS WHITE
- PROVIDE ONE SIGN PER HANDICAPPED SPACE.
- NO STEPS AT BUILDING ENTRANCES.
- PROVIDE RAMP OR DROP CURBS AT HANDICAPPED SPACES.
- PROVIDE 60" X 60" AREA OUTSIDE ENTRANCE FOR WHEELCHAIR MANEUVERABILITY.

HANDICAPPED PARKING SIGN

Not to scale

PROJECT TITLE:
BETH ACADEMY

DETAILS

REVISIONS:
DATE: 1/15/10
ENGINEERING DEPT. COMMENTS:
MUSLER ENGINEERING COMPANY
MUSLER ENGINEERING - PLANNING - LAND SURVEYING
32 Portwest Court, St. Charles, Missouri 63303
Telephone: (636) 916-0444
Fax: (636) 916-8444
CERTIFICATE OF AUTHORITY: ENGINEERING E-1232-C, LAND SURVEYING LS-24-C
DATE: 1/15/10
DRAWN: R.S.M./J.R.S.
CHECKED: R.S.M./J.R.S.
PROJECT NO.: 10-1178
SHEET NO.: 10-1178

DISCLAIMER OF RESPONSIBILITY
I hereby specify that the documents intended to be authorized by my seal are limited to this sheet, and I hereby disclaim any responsibility for all other drawings, specifications, estimates, reports or other documents or instruments relating to or intended to be used for any part or parts of the architectural or engineering project or survey.



JEFFREY R. SMITH, P.E.
MO. P.E. # E-2001004672

PREPARED FOR:
BETH HOLDINGS, LLC
MR. DAVID BETH
322 COUNTRY MEADOWS DRIVE
ST. CHARLES, MISSOURI 63303
TELEPHONE: 314-614-2207
FAX: 314-553-5078
E-mail: dbeth01@bscglobal.net

P & Z No.
00-27.17.02 - 4/1/10
City No.

Page No. **11**