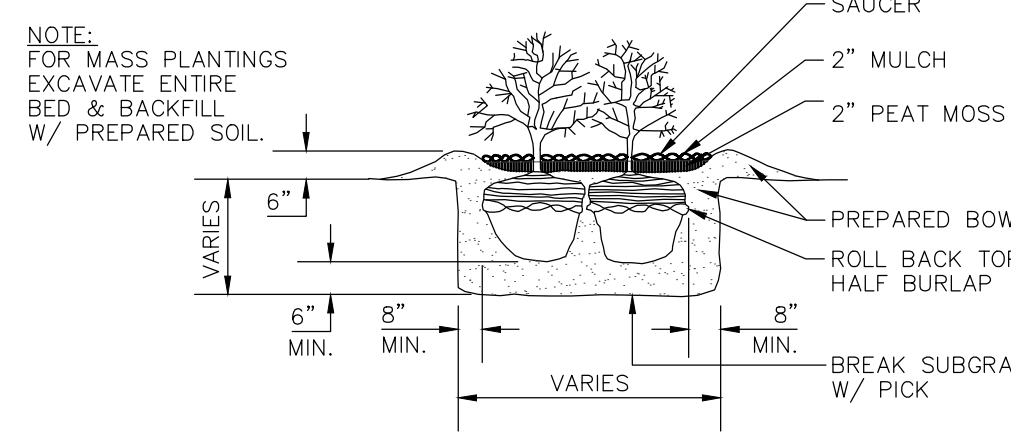
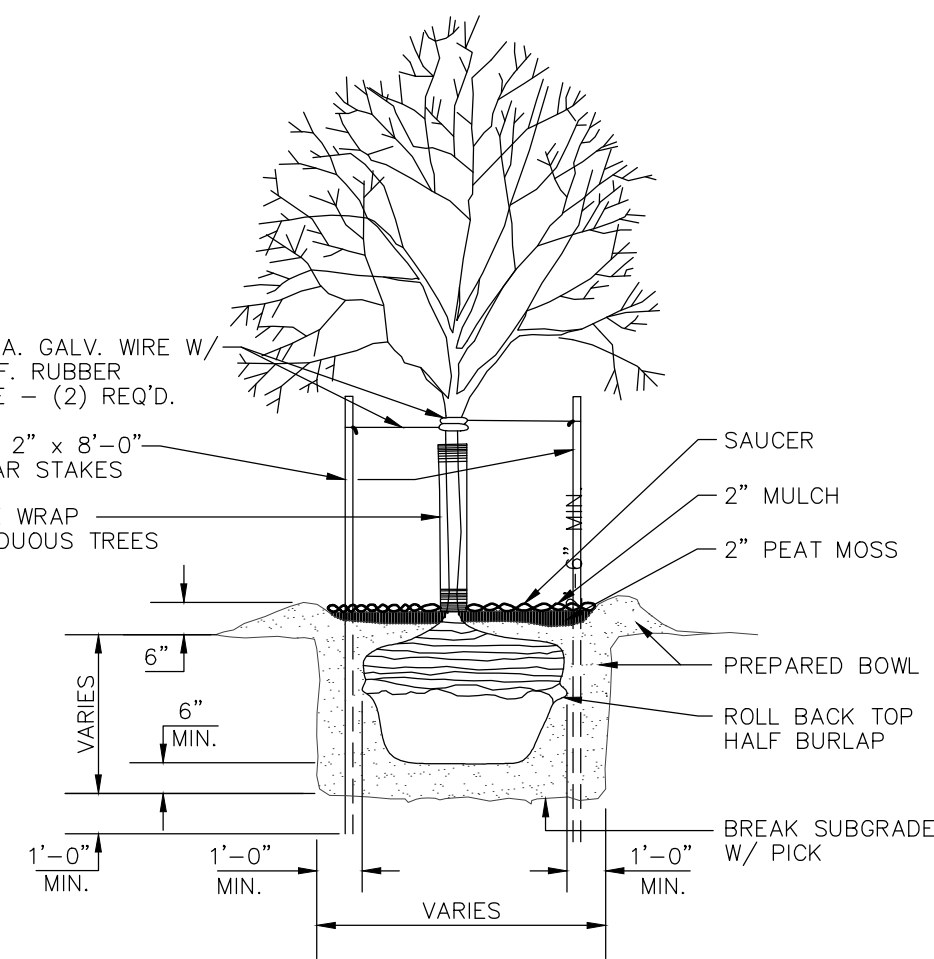


LANDSCAPING NOTES					
SYMBOL	COMMON NAME	BOTANICAL NAME	PLANTED SIZE	QUANTITY	MATURE SIZE
DECIDUOUS TREES					
⊙	Redmond Linden	Tilia americana	2"	4	25'-30'
⊙	Skyline Honeylocust	Gleditsia triacanthos 'Skyline'	2"	3	35'
⊙	Japanese Tree Lilac	Syringa reticulata	2"	7	15'
⊙	Freeman Maple	Acer freemanii 'Marmo'	2"	3	30-45'
⊙	Autumn Brilliance Serviceberry	Amelanchier grandiflora 'Autumn Brilliance'	2"	4	10'
DECIDUOUS SHRUBS					
⊙	Pipsqueak Burning Bush	Euonymus alatus 'Pipzam'	24"-36"	8	4'-6'
EVERGREEN SHRUBS					
⊙	Techny Arborvitae	Thuja occidentalis	42"-48"	3	4'-6'
⊙	Sherwood Compact Mugo Pine	Pinus mugo 'Sherwood Compact'	12"-18"	18	3'-4'
⊙	Sargent's Juniper	Juniperus chinensis 'Sargentii'	24"-36"	32	2'-3'
⊙	Dwarf Globe Blue Spruce	Picea pungens 'Globosa'	36"	18	3'-5'
⊙	Sea Green Juniper	Juniperus chinensis 'Sea Green'	36"	6	4'-6'
⊙	Wintergreen Boxwood	Buxus microphylla 'Wintergreen'	24"-36"	27	3'
PERENNIALS					
⊙	Prairie Dropseed	Sporobolus heterolepis	6"-12"	34	2'-3'
⊙	Autumn Fire Stonecrop	Sedum x 'Autumn Fire'	12"	24	2'
⊙	Karl Foerster Reed Grass	Calamagrostis x acutiflora 'Karl Foerster'	24"	33	4'-5'

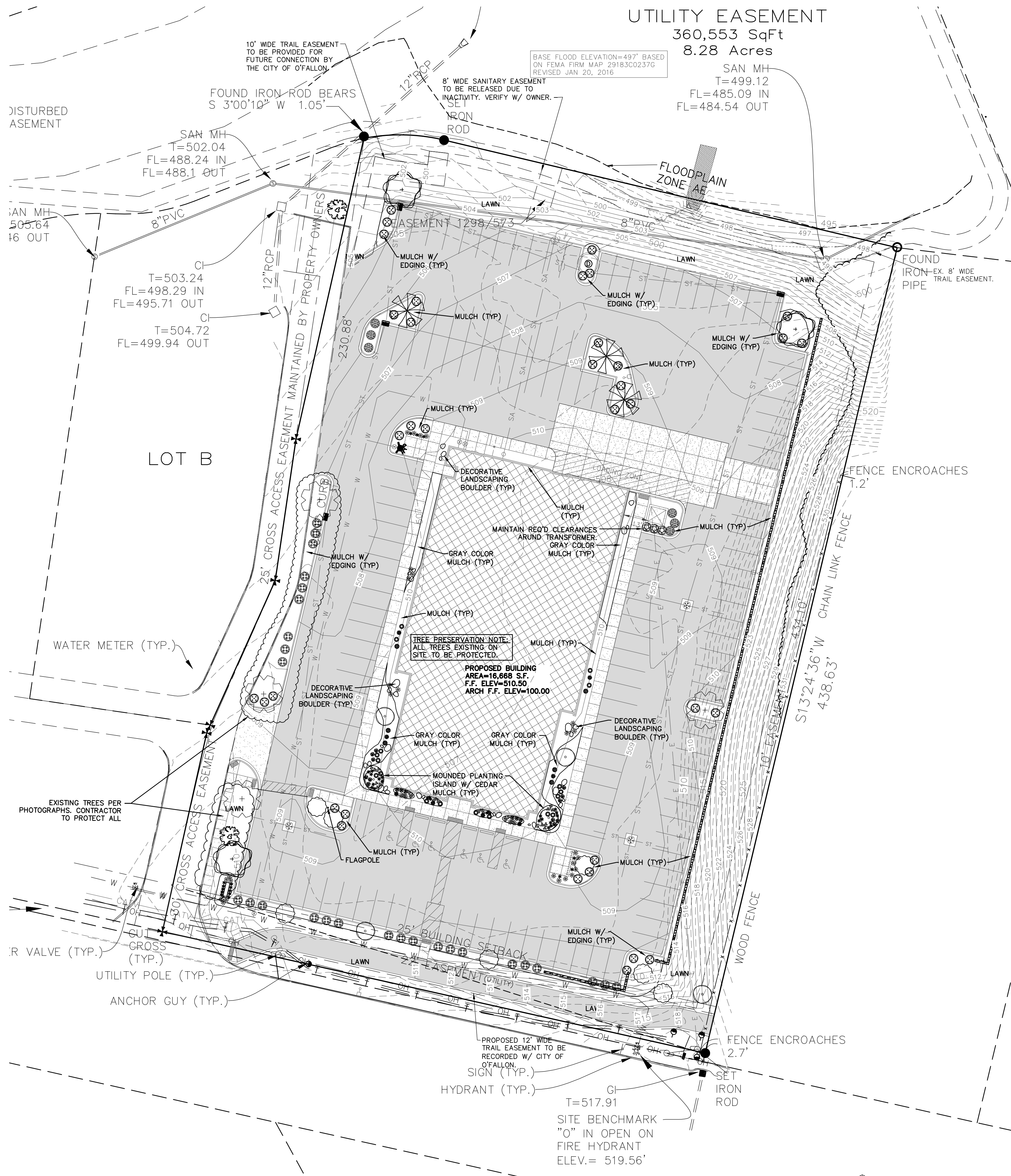
LANDSCAPING CALCULATION:
 REQUIRED: 6% * 56,882 SF = 3413 SF
 PROVIDED: 4,890 SF (8.6%)
 FRONTAGE TREES: $\frac{1}{2}LF = 280LF$ (7 REQ'D / 6 PROVIDED)
 ONSITE TREES: $\frac{1}{3}SF = 39,450 / 3000 = 13$ REQ'D / 15 PROVIDED
 ** 1 TREE ONSITE TO BE USED TO MEET FRONTAGE TREE REQUIREMENT.
TREE PRESERVATION CALCULATION (BASED ON GOOGLE DRIVE-BY):
 8 TREES ONSITE ALONG ENTRANCE ROAD, MIN. 6 TREES TO REMAIN=75% RETAINED > 20% MIN.



SHRUB PLANTING DETAIL
NO SCALE

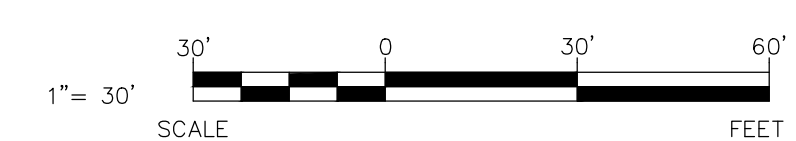


TREE PLANTING DETAIL
NO SCALE



P+Z No. 16-000086
 Approval Date: Jan 7, 2016
 City No.: CSP-16-0000001

NORTH LANDSCAPE PLAN



PRELIMINARY DRAWING - NOT FOR CONSTRUCTION

Always a Better Plan

OWNER:
 W.D.S. CONSTRUCTION, INC.
 111 ROWELL STREET
 BEAVER DAM, WI 53916

PROJECT:
 BIOLIFE PLASMA CENTER
 BRAMBLET CROSSING (LOT A)
 O'FALLON, MO 63368

PRELIMINARY SHEET DATES:
 DECEMBER 4, 2015
 DECEMBER 23, 2015
 JANUARY 29, 2016
 FEBRUARY 16, 2016
 MARCH 1, 2016

JOB NUMBER:
 1514400
SHEET

C1.5

2015 © EXCEL ENGINEERING, INC.