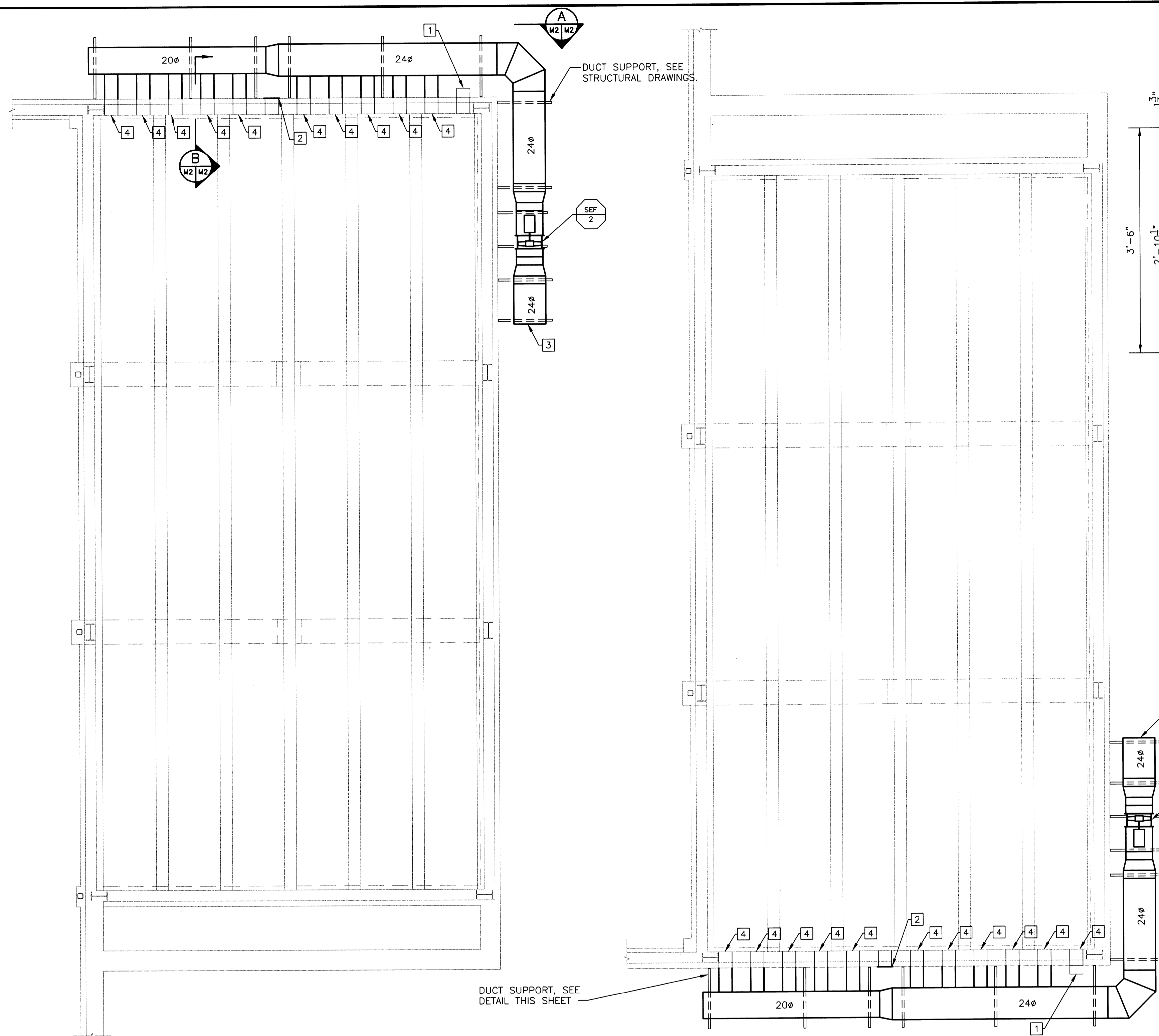


DWG: N:\07083\07083.dwg  
 PAGE SETUP NAME: ---  
 SAVE DATE: 1/14/2008 7:48:18 AM  
 OPERATOR: BUSINTE



**BIOFILTER #2 LAYOUT**  
SCALE: 1/4"=1'-0"

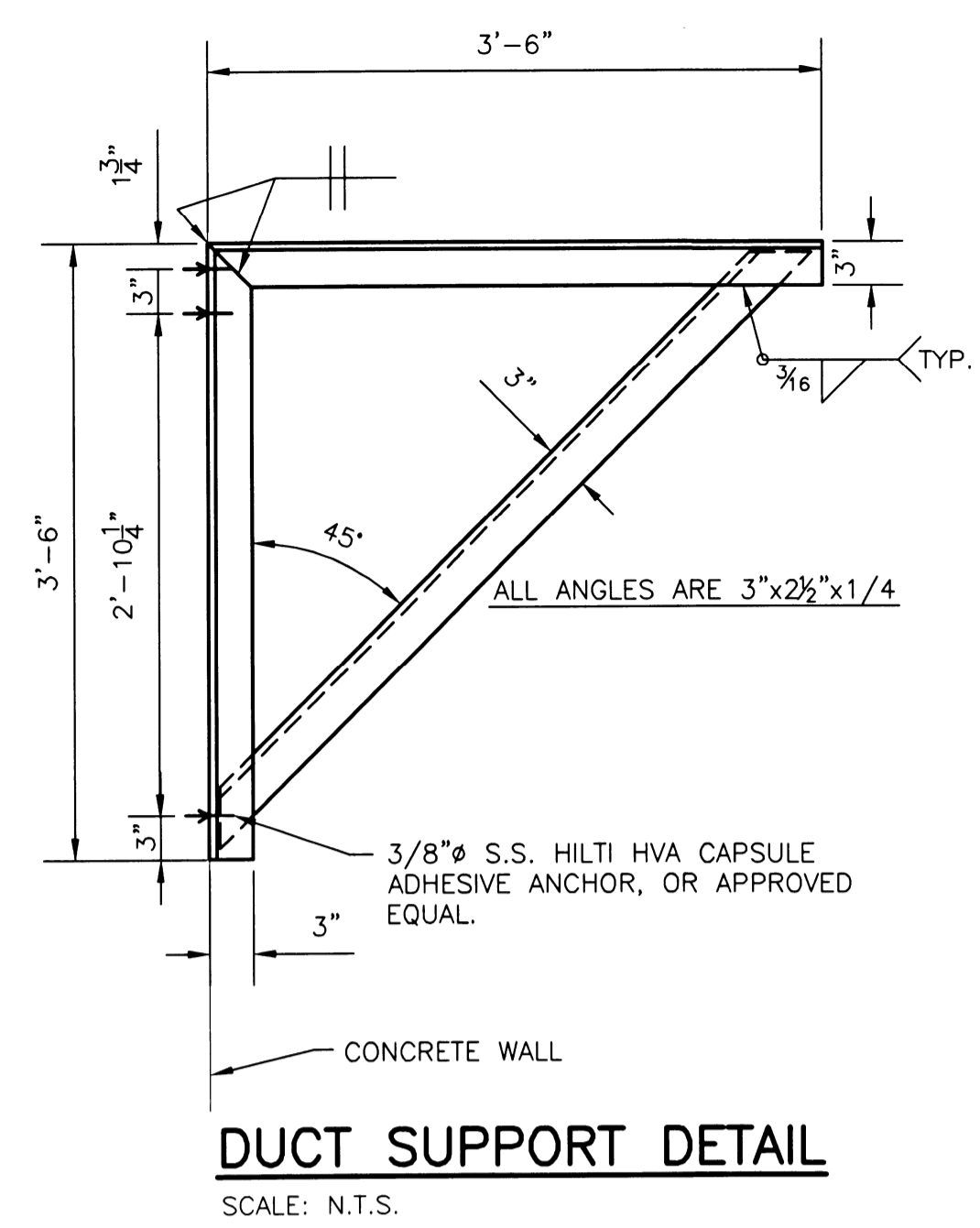
**BIOFILTER #3 LAYOUT**  
SCALE: 1/4"=1'-0"

FAN SCHEDULE												
PLAN MARK	MANUFACTURER	MODEL	LOCATION	CFM	SP	FAN RPM	TIP SPEED	DRIVE	HP	ELEC DATA	ACCESSORIES	NOTES
SEF-01	GREENHECK	AX-47-190-0418-M5	BIOFILTER NO.1	5000	1.25	3500	16842	DIRECT	5	460/60/3		1
SEF-02	GREENHECK	AX-47-190-0418-M5	BIOFILTER NO.2	5000	1.25	3500	16842	DIRECT	5	460/60/3		1
SEF-03	GREENHECK	AX-47-190-0418-M5	BIOFILTER NO.3	5000	1.25	3500	16842	DIRECT	5	460/60/3		1

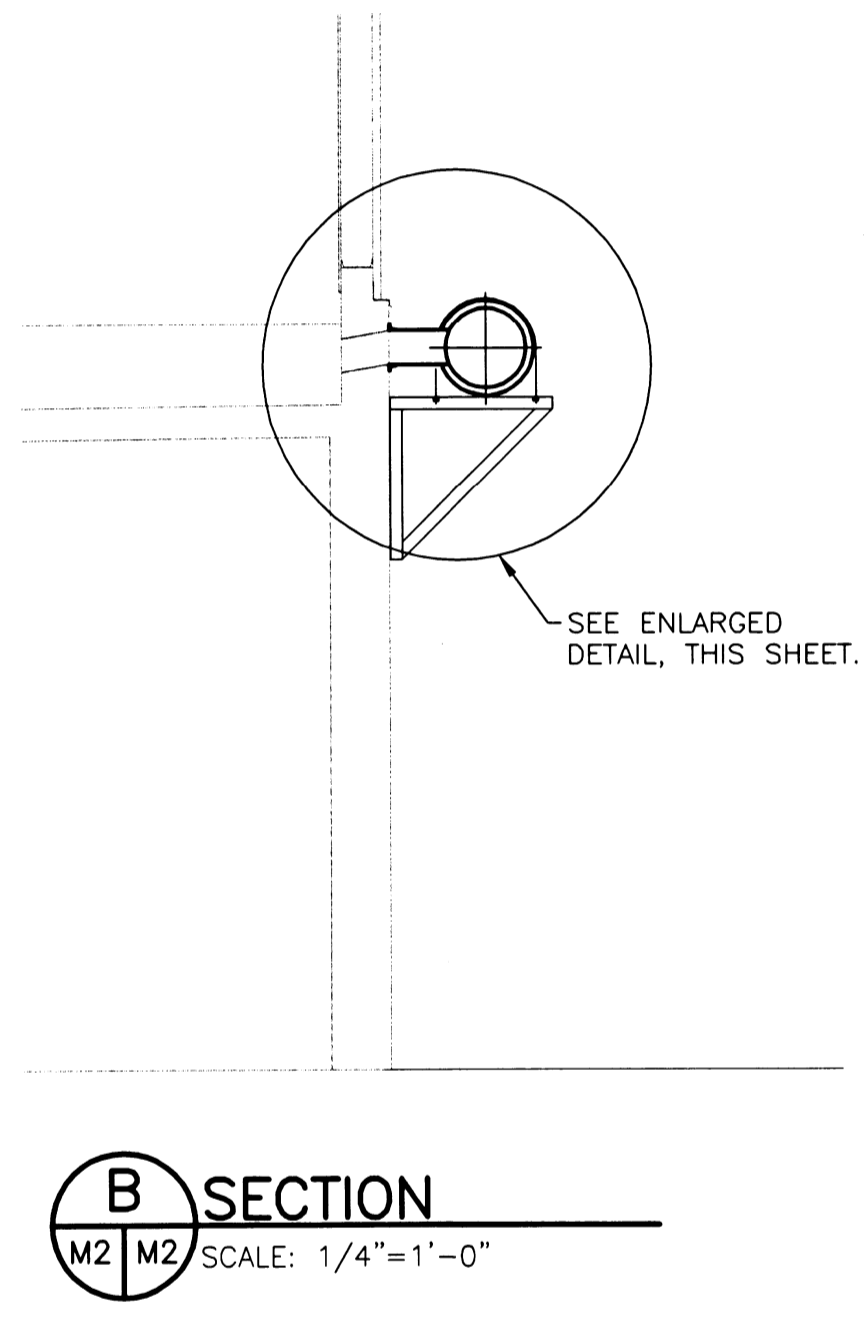
NOTES:  
 1. FAN SHALL BE REVERSIBLE AND CAPABLE OF PROVIDING SPECIFIED AIRFLOW OPERATING TO SUPPLY OR EXHAUST THE BIOFILTER.

ACCESSORIES:  
 DS - DISCONNECT SWITCH    BD - BACKDRAFT DAMPER    AP - ADJUSTABLE PULLEY  
 PC - PREFAB CURB            BS - BIRDSCREEN            OSC - OUTLET SUPPLY GUARD  
 BG - BELT GUARD            VI - VIBRATION ISOLATOR    WS - WALL SWITCH  
 IG - INLET GRILLE            DC - DISCHARGE ROOFCAP

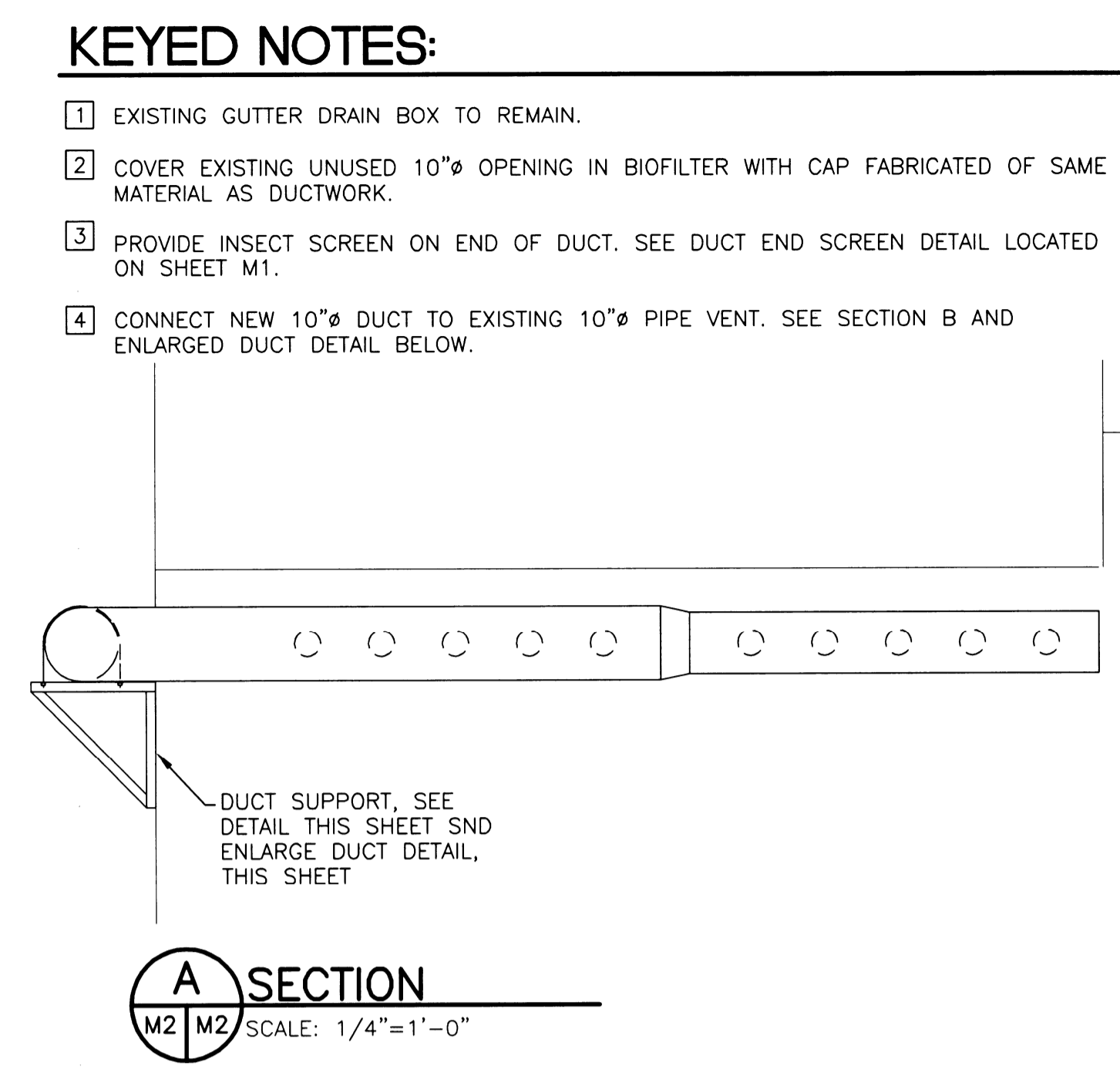
**\*ALL WORK ON THIS DRAWING PART OF ALTERNATE NO. 2, SEE BID FORM PARAGRAPH 4.C.**



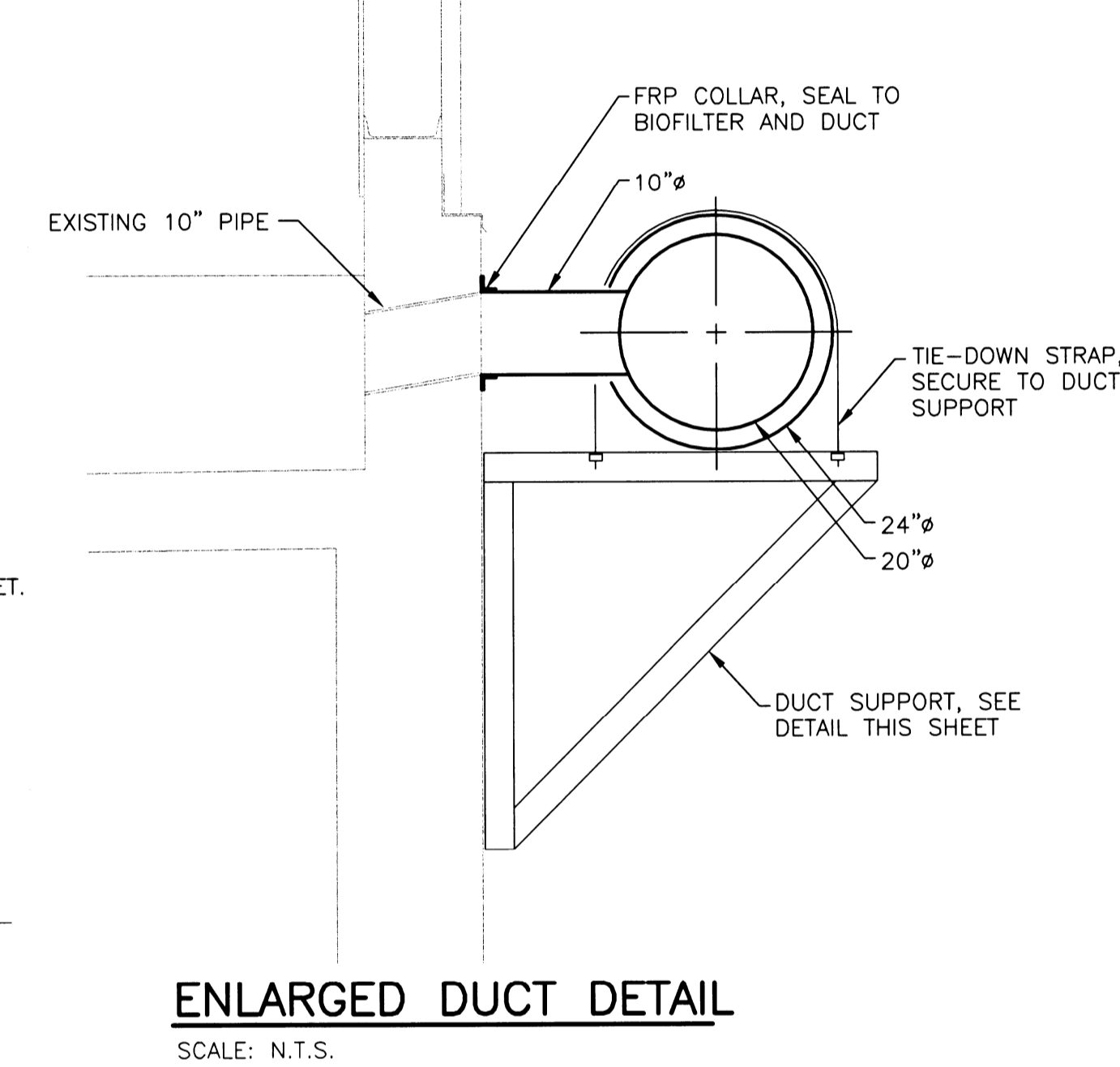
**DUCT SUPPORT DETAIL**  
SCALE: N.T.S.



**SECTION B**  
SCALE: 1/4"=1'-0"



**SECTION A**  
SCALE: 1/4"=1'-0"



**ENLARGED DUCT DETAIL**  
SCALE: N.T.S.

**KEYED NOTES:**

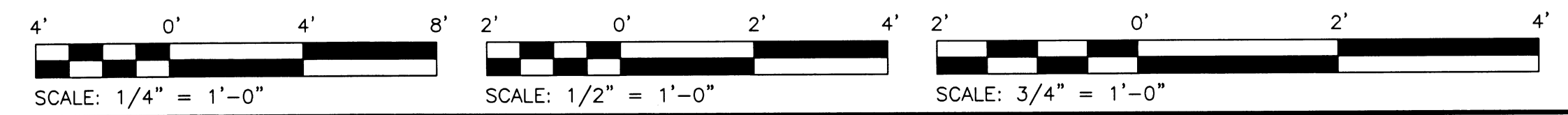
- EXISTING GUTTER DRAIN BOX TO REMAIN.
- COVER EXISTING UNUSED 10"Ø OPENING IN BIOFILTER WITH CAP FABRICATED OF SAME MATERIAL AS DUCTWORK.
- PROVIDE INSECT SCREEN ON END OF DUCT. SEE DUCT END SCREEN DETAIL LOCATED ON SHEET M1.
- CONNECT NEW 10"Ø DUCT TO EXISTING 10"Ø PIPE VENT. SEE SECTION B AND ENLARGED DUCT DETAIL BELOW.

**ANCHORAGE AND SWAY BRACING FOR MECHANICAL SYSTEM COMPONENTS RELATED TO SEISMIC LOAD RESISTANCE**

LISTING OF EQUIPMENT & SYSTEM COMPONENTS	SEISMIC USE GROUP ( I I )				SEISMIC DESIGN CATEGORY ( D )				COMMENTS
	ANCHORAGE TO FLOORS, ROOFS, ETC.		SWAY BRACING		LOCATION OF PROFESSIONALLY-SEALED ANCHORAGE AND SWAY BRACING DETAILS ON CONSTRUCTION DOCUMENTS		SUBSEQUENT SUBMITTAL		
	NOT PROVIDED	TO BE PROVIDED	NOT PROVIDED	TO BE PROVIDED	DRAWING NO. OR SPEC. SECTION	SHOP DRAWINGS	SEPARATE PERMIT & PLANS		
SUPPLY/ EXHAUST FANS		X		X			X		
SUPPLY/ EXHAUST DUCTWORK		X		X			X		

NOTES:  
 1. TABLE 600, EXCEPTION FOR DUCTWORK "b" - DUCTWORK HAS A CROSS-SECTIONAL AREA OF LESS THAN 6FT. SQ.  
 2. COMPONENTS SHALL BE POSITIVELY ATTACHED WITH MECHANICAL FASTENERS.

EXPLANATORY NOTES:  
 1. SHOP DRAWINGS SHOULD BE SUBMITTED TO THE COUNTY A MINIMUM OF TWO WEEKS PRIOR TO PLANNED INSTALLATION TO ALLOW FOR PLAN REVIEW AND DISTRIBUTION TO INSPECTOR. ADDITIONAL TIME MAY BE NEEDED IF SUCH SUBMISSIONS ARE DEFICIENT.  
 2. SWAY BRACING REQUIRED FOR ITEMS SUSPENDED FROM STRUCTURE, UNLESS EXEMPT.  
 3. ALL SEISMIC SHOP DRAWINGS SHALL BE REVIEWED BY THE ENGINEER OF RECORD.



CITY OF FALLON, MISSOURI  
 BIOTOWER COMPLEX MEDIA REPLACEMENT  
 CONTRACT NO. 07-006

VENTILATION IMPROVEMENTS  
 SECTIONS AND DETAILS

**HORNER & SHIFRIN, INC.**  
 ENGINEERS

PROFESSIONAL ENGINEER  
 MISSOURI  
 LICENSE NO. 14864

NO.	DATE	REVISION
0	1/14/08	ISSUED FOR BID

DATE: 1/14/2008

DESIGNED: RBT  
 DRAWN: NRS  
 CHECKED: RBT

JOB NO. 07.083  
 REF. NO.

SHEET 10 OF 12

M2