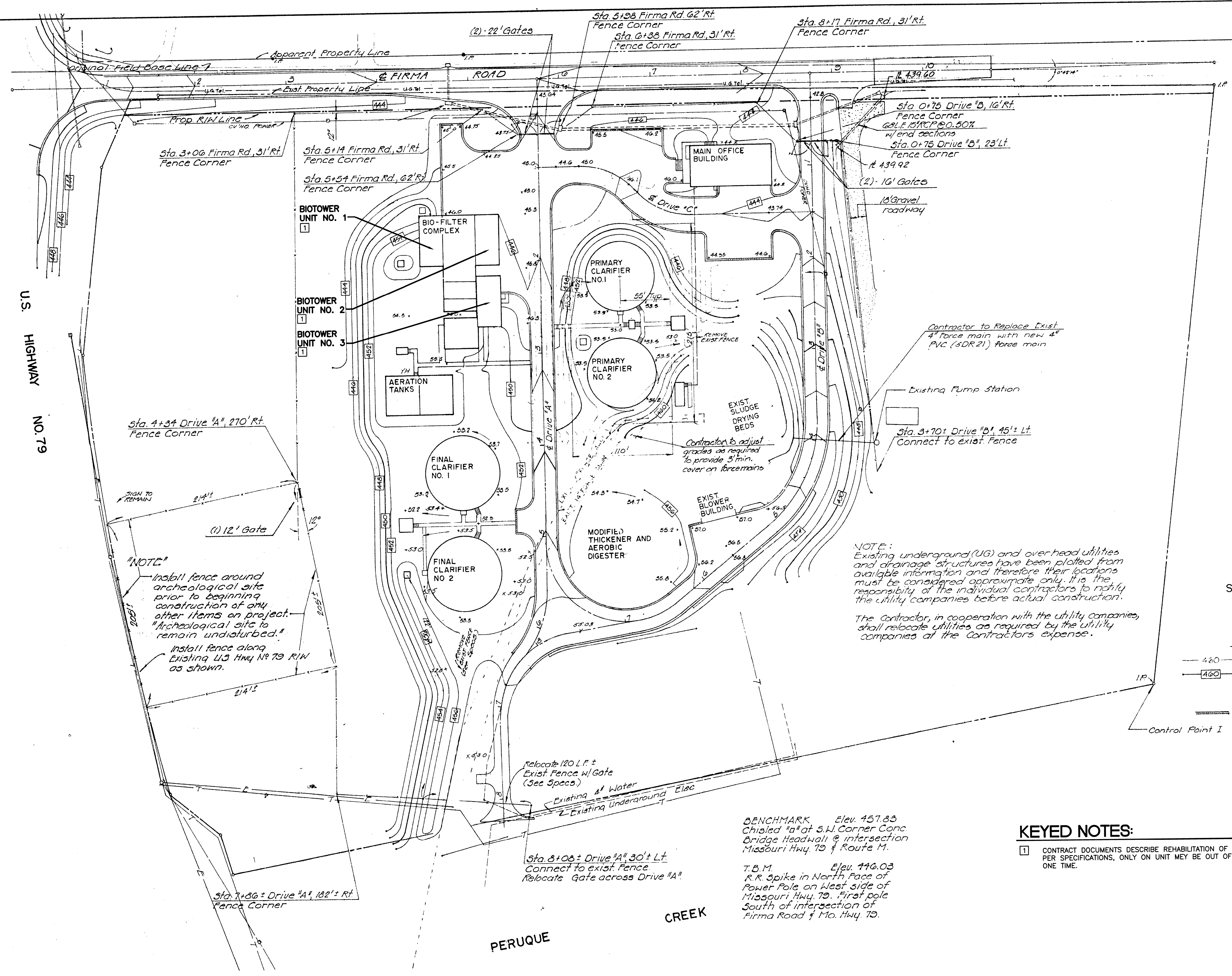


P:\01\070813\CA\1\07081301.dwg
 CTB: Hs_fulsize.ctb
 PAGE SETUP NAME: ---
 PLOT DATE: 1/14/2008 7:48:17 AM
 OPERATOR: BUSINSINE



"NOTE"
 Install fence around archaeological site prior to beginning construction of any other items on project.
 "Archaeological site to remain undisturbed."
 Install fence along Existing U.S. Hwy No. 79 R/W as shown.

NOTE:
 Existing underground (UG) and over head utilities and drainage structures have been plotted from available information and therefore their locations must be considered approximate only. It is the responsibility of the individual contractors to notify the utility companies before actual construction.
 The contractor, in cooperation with the utility companies, shall relocate utilities as required by the utility companies at the contractors expense.

LEGEND
 --- 420 --- Existing Contour
 --- 460 --- Proposed Contour
 Type "B" Curb & Gutter
 Control Point I

BENCHMARK Elev. 457.83
 Chisled "a" at S.W. Corner Conc Bridge Headwall @ intersection Missouri Hwy. 79 & Route M.
T.B.M. Elev. 446.03
 R.R. Spike in North Face of Power Pole on West side of Missouri Hwy. 79. First pole South of intersection of Firma Road & Mo. Hwy. 79.

SITE PLAN
 SCALE: 1"=50'

KEYED NOTES:
 1. CONTRACT DOCUMENTS DESCRIBE REHABILITATION OF EACH BIOTOWER. PER SPECIFICATIONS, ONLY ON UNIT MAY BE OUT OF SERVICE AT ANY ONE TIME.

NOTE:
 1. ORIGINAL SITE PLAN PRODUCED FOR THE CITY OF O'FALLON, MISSOURI; WASTE WATER TREATMENT PLANT EXPANSION PROJECT; BY GEORGE BUTLER ASSOCIATES; SHEET 4 OF 88, DATED JULY 1981.

HORNER & SHIFRIN, INC. ENGINEERS	
CITY OF O'FALLON, MISSOURI BIOTOWER COMPLEX MEDIA REPLACEMENT CONTRACT NO. 07-006	
SITE PLAN	
DATE:	1/14/2008
DESIGNED:	JTL
DRAWN:	BDV
CHECKED:	JEM
JOB NO.	07.083
REF. NO.	
SHEET	2 OF 12
C1	