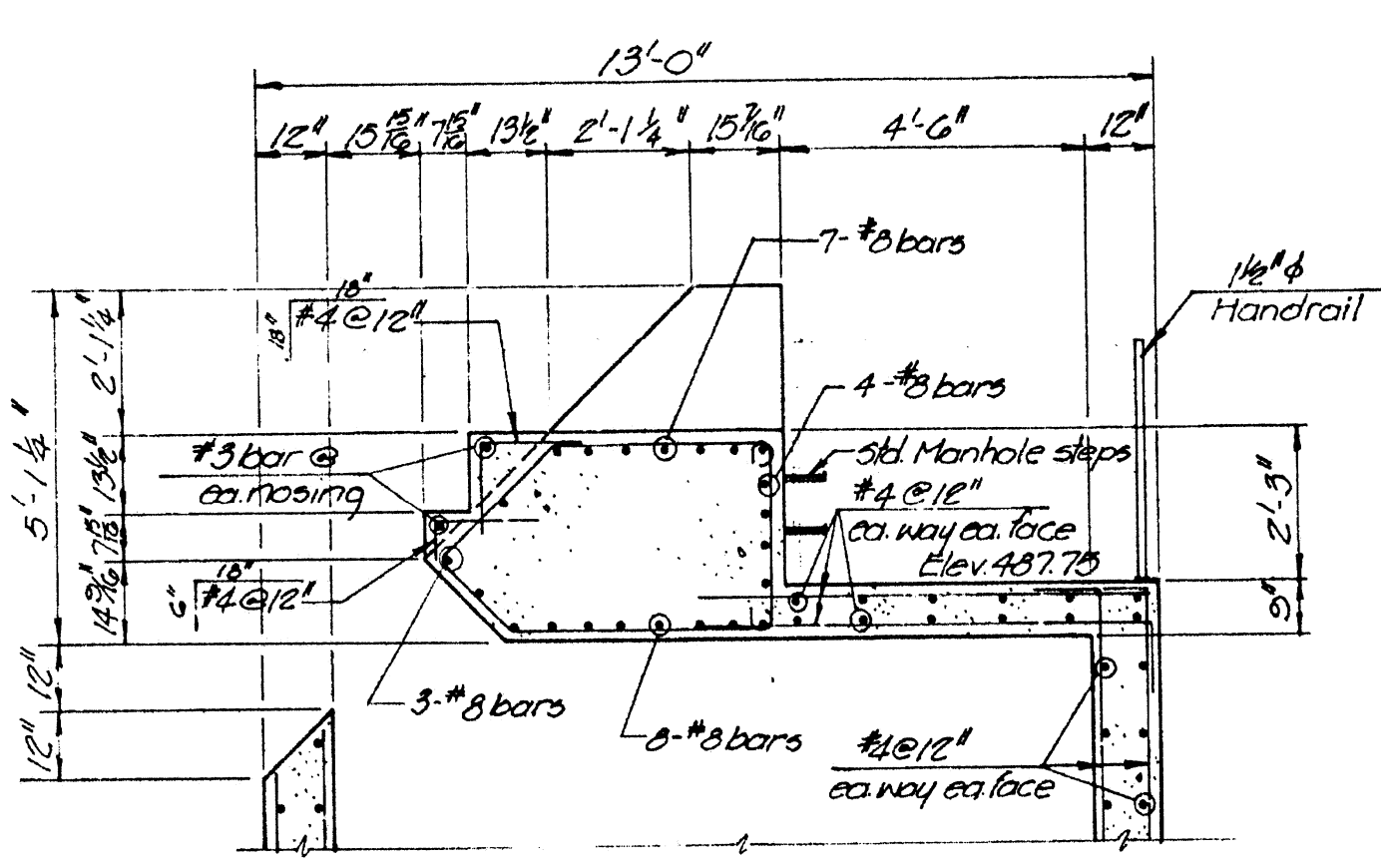
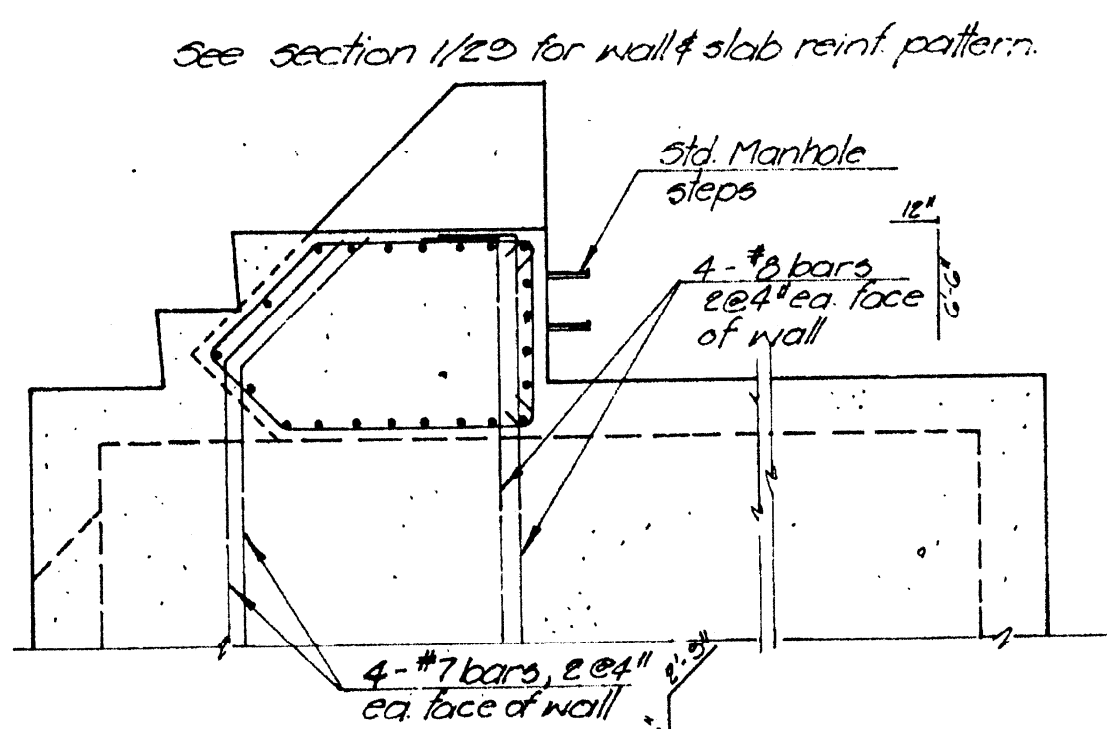


NOTES:
 1) Provide 2-#6 diagonal bars in each face of the corners of openings.
 2) Provide #6 bars x 4'-0" @ 12" in each face of the corner of the walls.
 3) Depth of notch in wall to be determined after purchase of screw pumps.

SECTION 1
 Scale: 3/8" = 1'-0"
 (Re. sht. 27)

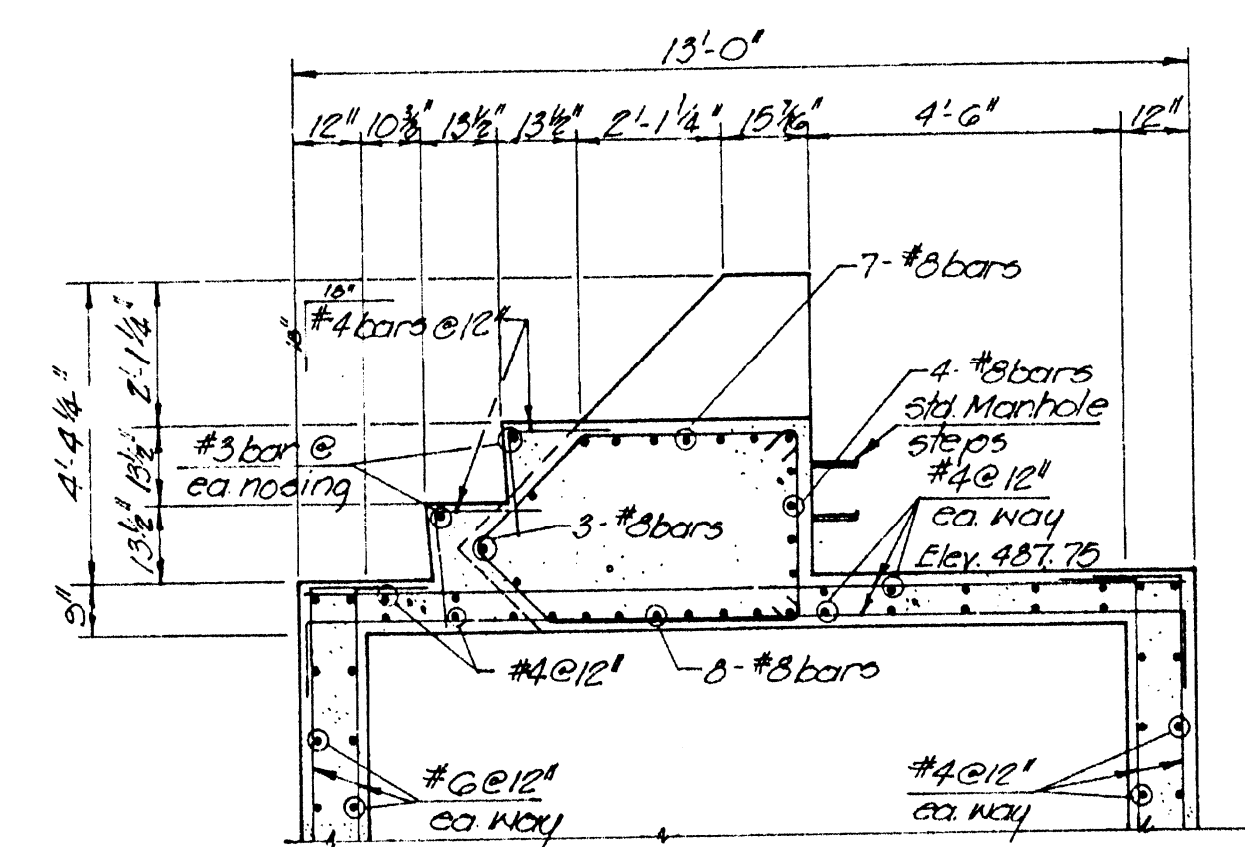


SECTION 3
 Scale: 3/8" = 1'-0"
 (Re. sht. 27)

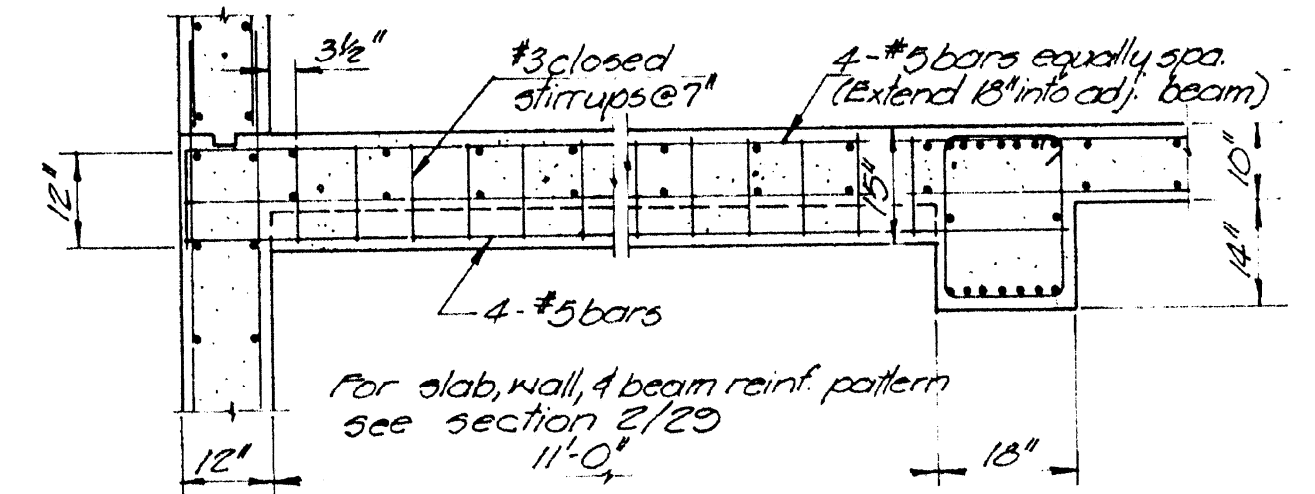


SECTION 4
 Scale: 3/8" = 1'-0"
 (Re. sht. 27)

SECTION 2
 Scale: 3/8" = 1'-0"
 (Re. sht. 27)

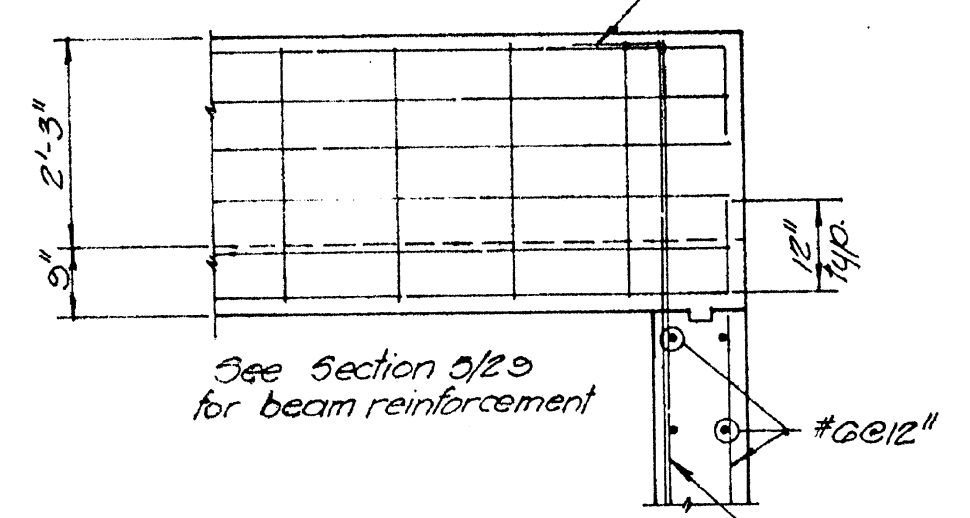


SECTION 5
 Scale: 3/8" = 1'-0"
 (Re. sht. 27)

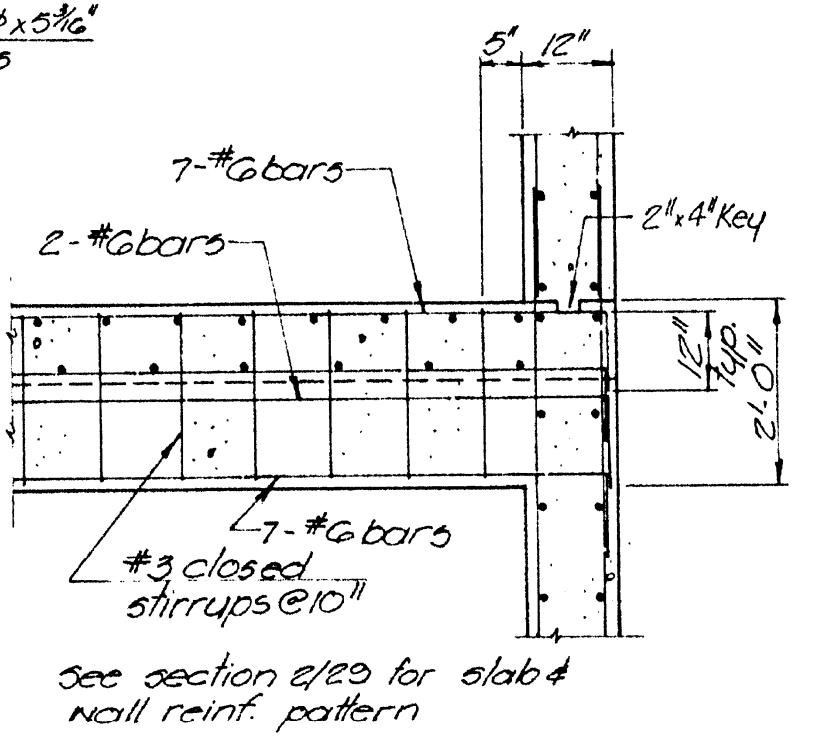


BEAM DETAIL 7
 Scale: 1/2" = 1'-0"
 (Re. sht. 27)

SECTION 8
 Scale: 1/2" = 1'-0"
 (Re. sht. 27)



BEAM CONNECTION DETAIL 6
 Scale: 1/2" = 1'-0"
 (Re. sht. 27)



EPA PROJECT NO. C291090 Revised 3/3/82 C.Ray

GBA
 GEORGE BUTLER ASSOCIATES
 CONSULTING ENGINEERS/ARCHITECTS
 LANDSCAPE ARCHITECTS-PLANNERS

OFFICES:
 SUITE 305-A FAIRWAY OFFICE CENTER
 4210 JOHNSON DRIVE, SHAWNEE MISSION, KANSAS 66205
 1100 CITY CENTER SQUARE
 1100 MAIN, KANSAS CITY, MISSOURI 64105
 427E 134 LAKESIDE PLAZA II
 6700 CORPORATE DRIVE, KANSAS CITY, MISSOURI 64120

**WASTEWATER TREATMENT
 PLANT EXPANSION**

**BIO-FILTER BUILDING
 STRUCTURAL SECTIONS**

CITY OF O'FALLON, MISSOURI

DESIGNED BY J.L.S. DRAWN BY W.S. CHECKED BY M.L.S.

| | |
|----------|---------------|
| JOB NO | 79-2065 |
| DATE | July 30, 1981 |
| SCALE | As Noted |
| SHEET NO | 29 of 88 |