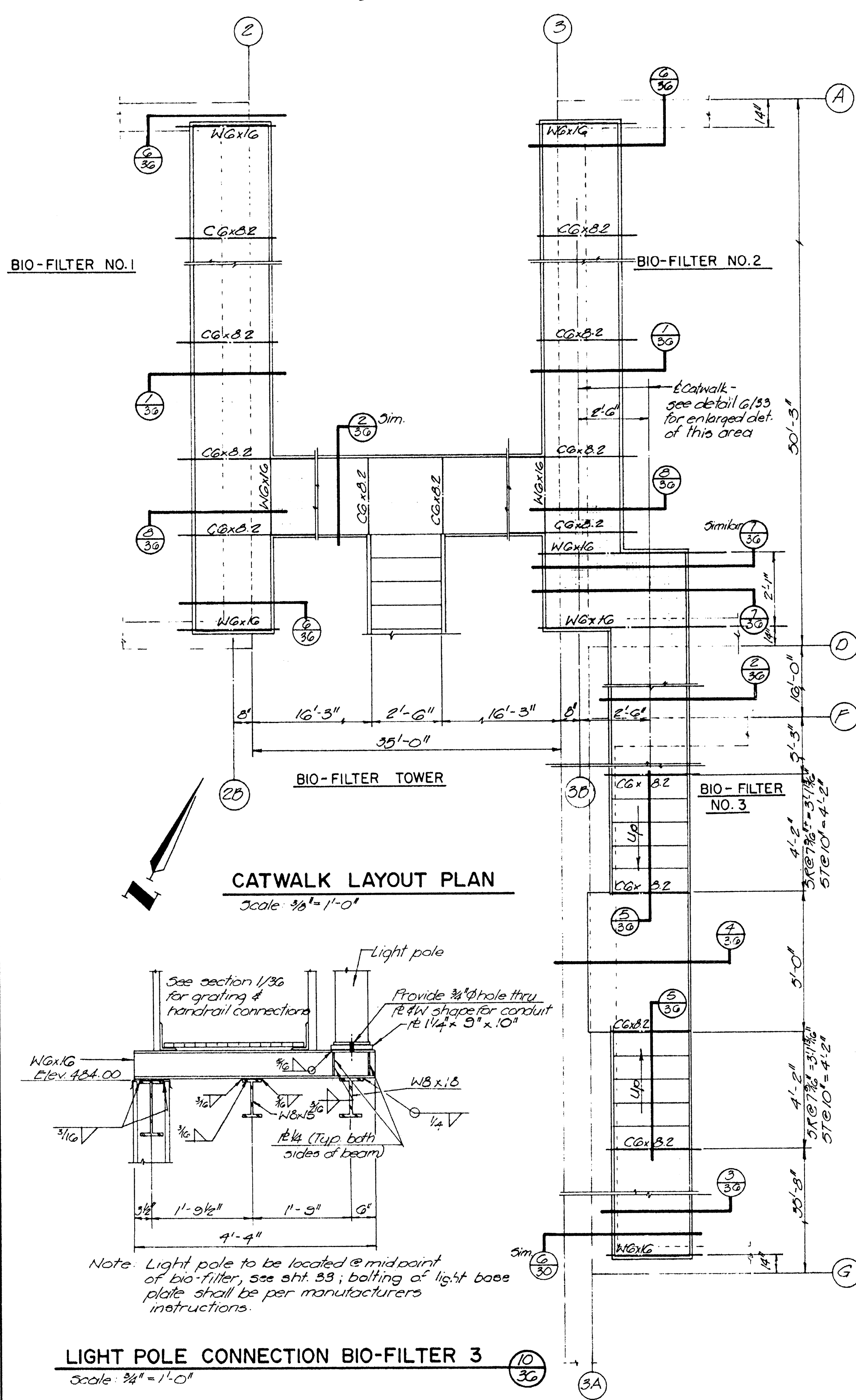


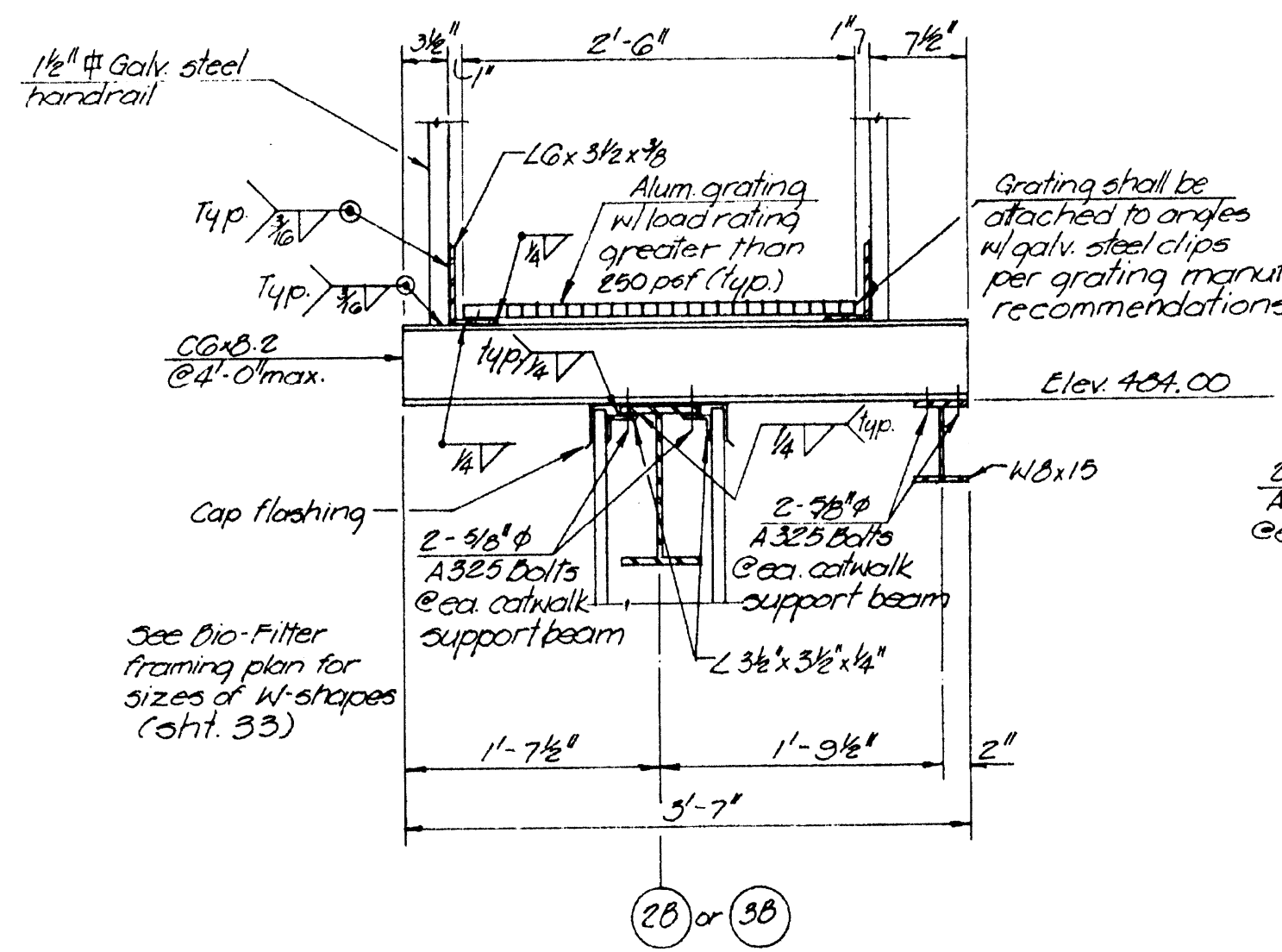
See sheet 33 for structural steel framing plan.



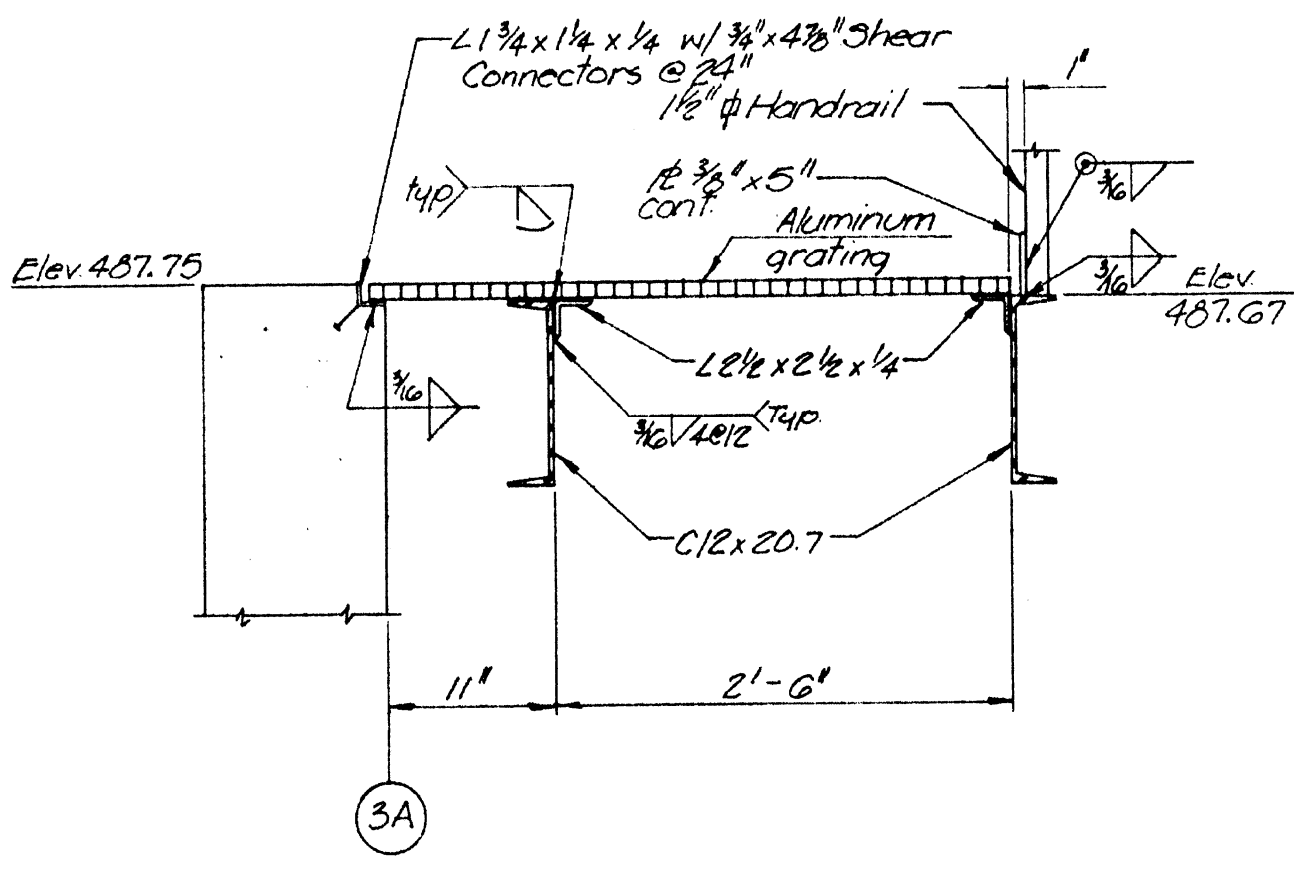
**CATWALK LAYOUT PLAN**  
Scale: 3/8" = 1'-0"

**LIGHT POLE CONNECTION BIO-FILTER 3**  
Scale: 3/4" = 1'-0"

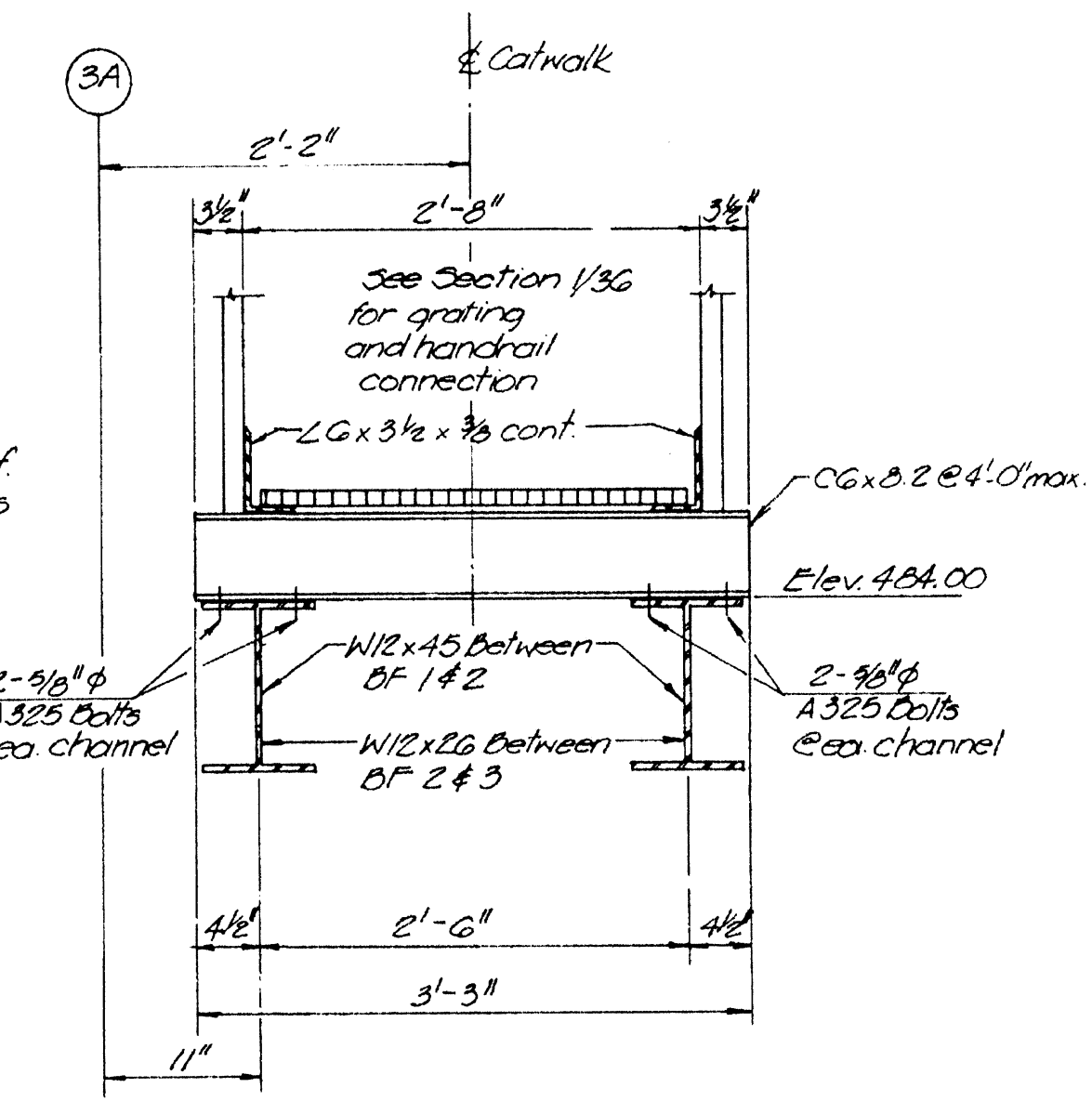
Note: Light pole to be located @ midpoint of bio-filter, see sht. 33; bolting of light base plate shall be per manufacturers instructions.



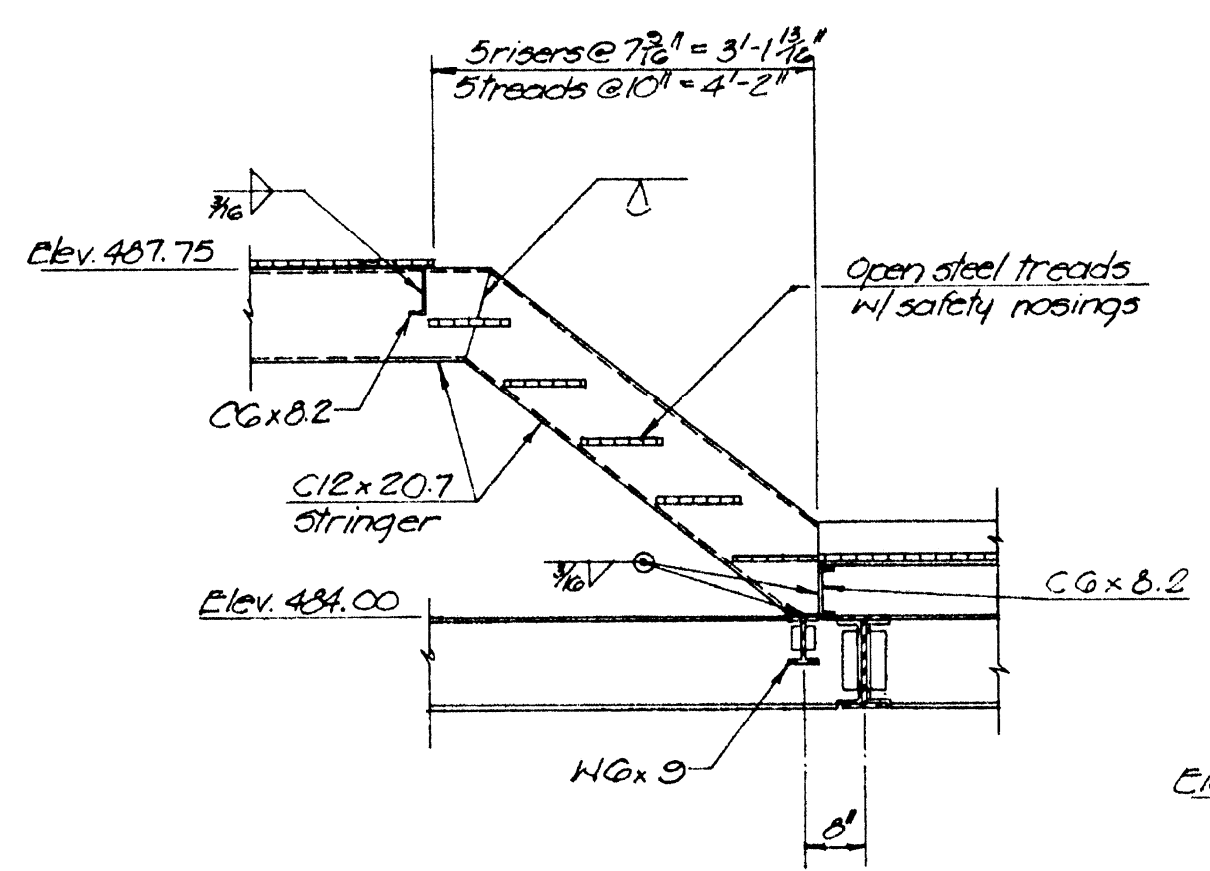
**SECTION 1**  
Scale: 1" = 1'-0"



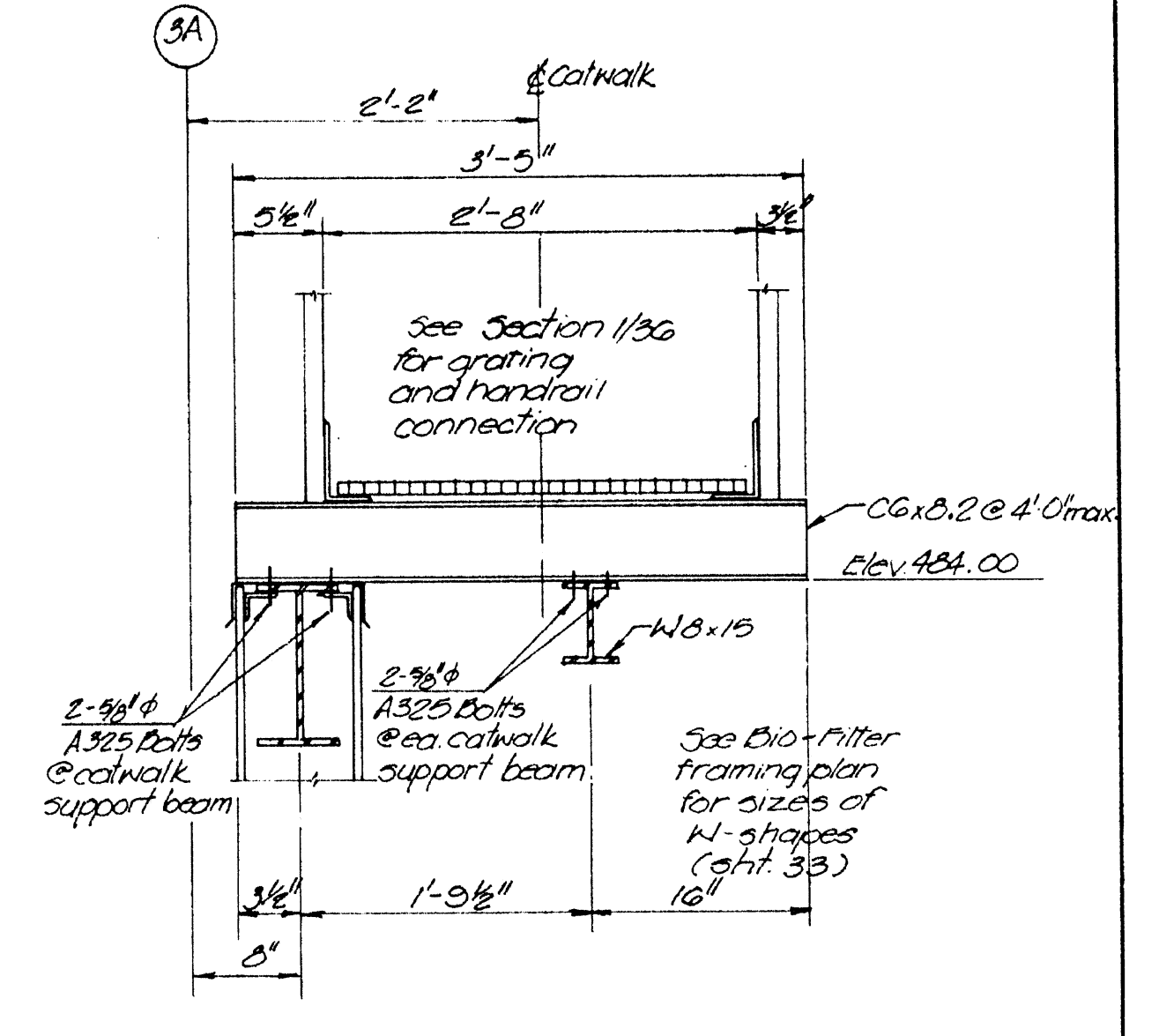
**SECTION 4**  
Scale: 1" = 1'-0"



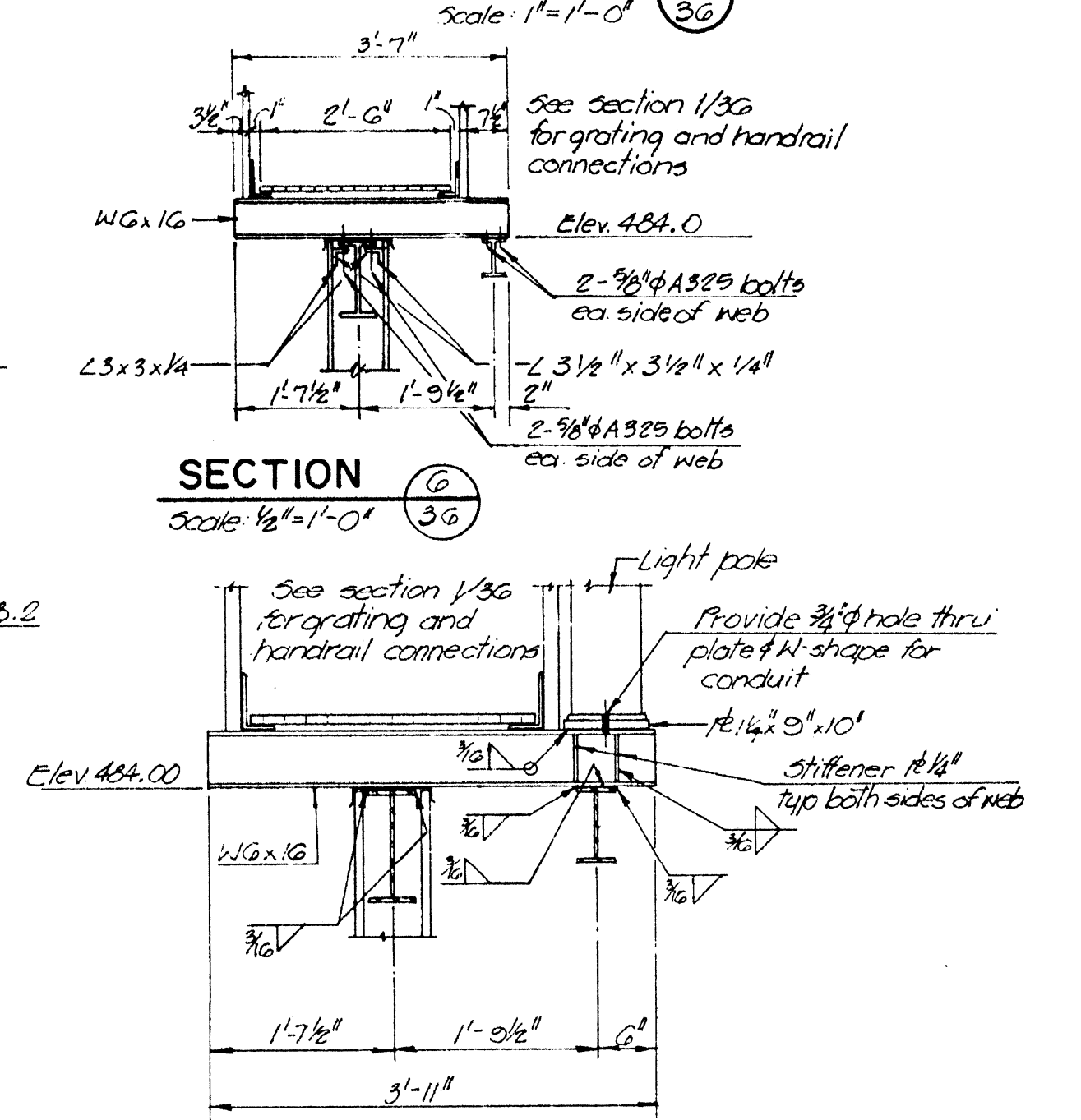
**SECTION 2**  
Scale: 1" = 1'-0"



**SECTION 5**  
Scale: 1/2" = 1'-0"



**SECTION 3A**  
Scale: 1" = 1'-0"



**SECTION 6**  
Scale: 1/2" = 1'-0"

Note: Light pole to be located @ midpoint of bio-filter, (No. 142) bolting of light pole to base plate shall be per manufacturers instructions.

**LIGHT POLE CONNECTION BIO-FILTER 1 & 2**  
Scale: 3/4" = 1'-0"

EPA PROJECT NO. C291090

**GBA**  
GEORGE BUTLER ASSOCIATES  
CONSULTING ENGINEERS/ARCHITECTS  
LANDSCAPE ARCHITECTS/PLANNERS

OFFICES:  
9016 200 S. FARMWAY OFFICE CENTER  
4210 JOHNSON DRIVE / SHANNON MISSION, KANSAS 66205  
1100 CITY CENTER SQUARE  
1100 MAIN / KANSAS CITY / MISSOURI 64105  
ROUTE 134 LAKESIDE PLAZA 2A  
6700 CORPORATE DRIVE / KANSAS CITY / MISSOURI 64120

WASTE WATER TREATMENT  
PLANT EXPANSION  
**BIO-FILTER COMPLEX**  
CATWALK PLAN & SECTIONS  
CITY OF O'FALLON, MISSOURI

DESIGNED BY J.L.S. DRAWN BY C.P.ROOP CHECKED BY M.L.S.

JOB NO. 70-2065  
DATE July 30, 1981  
SCALE As Noted  
SHEET NO. 36 of 88