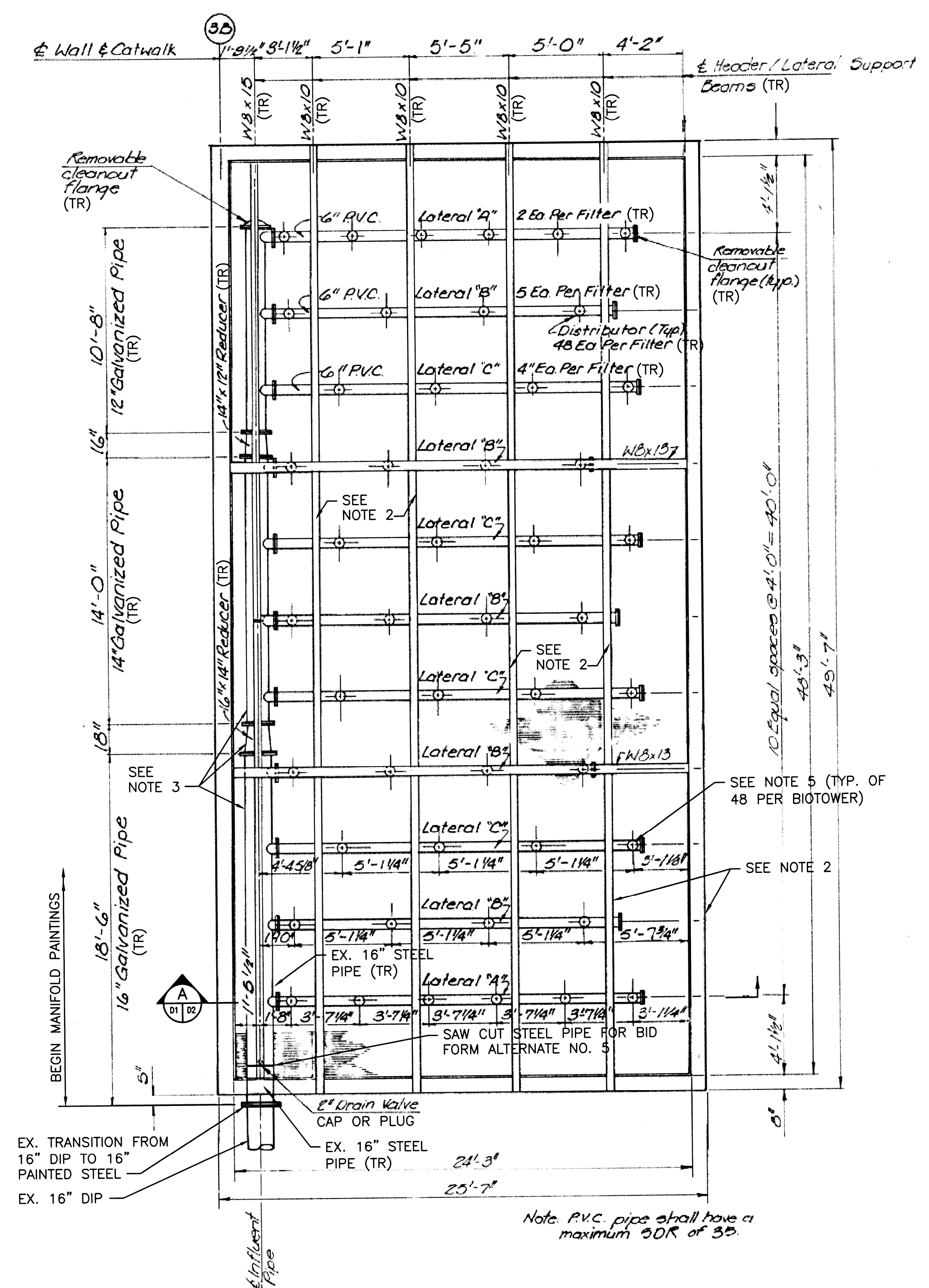
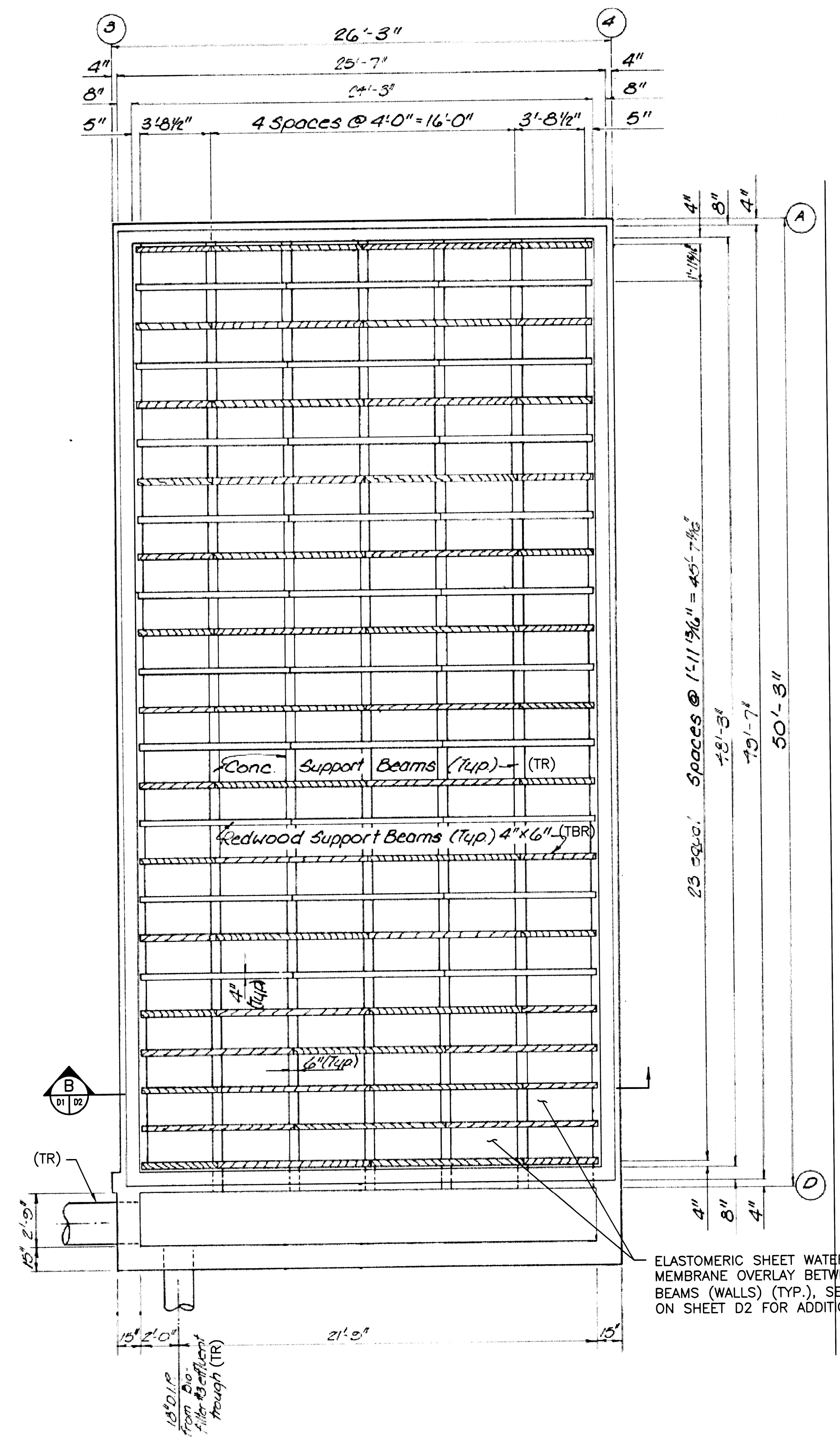


DWG: N:\07083\07083001.dwg  
 PLOT DATE: 1/14/2008 8:22:18 AM  
 OPERATOR: EUGENIEN  
 PLOT DATE: 1/14/2008 8:23:02 AM  
 CTR: 14.416156.ctb  
 PAGE SETUP: NAME: 07083.ctb  
 PLOT DATE: 1/14/2008 8:22:18 AM



**PLAN-HEADER LATERAL SUPPORT BEAMS**  
**(BIO-FILTER NO. 2 SHOWN, NO. 1 AND 3 SIMILAR)**  
**(TYP. OF 3 BIO-TOWERS)**  
 SCALE: 1/4"=1'-0"

BACKGROUND DRAWING TAKEN FROM GBD DWG. 17 OF 88



**PLAN-MEDIA SUPPORT BEAMS**  
**(BIO-FILTER NO. 2 SHOWN, NO. 1 AND 3 SIMILAR)**  
**(TYP. OF 3 BIO-TOWERS)**  
 SCALE: 1/4"=1'-0"

BACKGROUND DRAWING TAKEN FROM GBD DWG. 17 OF 88

- NOTES:**
- ALL OF THE EXISTING INTERIOR FRP PANELS WILL BE REMOVED FOR INSPECTION. BASED ON FINDINGS OF OBSERVATION BY ENGINEER FOLLOWING MEDIA REMOVAL, FRP PANELS MAY BE REPLACED, STRUCTURAL STEEL MAY BE PREPARED AND PAINTED, AND INSULATION MAY BE REPLACED. THE BID FORM PROVIDES INFORMATION ON THE ASSUMPTIONS TO BE UTILIZED IN PREPARATION OF BIDS. ALL PANEL FASTENERS THAT ARE REMOVED SHALL BE REPLACED WITH NEW STAINLESS STEEL FASTENERS WITH NEOPRENE WASHERS AND SEALS.
  - STRUCTURAL STEEL ABOVE MEDIA SHALL BE PREPARED AND PAINTED, IN ACCORDANCE WITH SPECIFICATION SECTION 09900, COATING SYSTEM 4. STEEL SHALL BE PREPARED AND PAINTED TO AND INCLUDING ITS CONNECTIONS WITH VERTICAL AND HORIZONTAL MEMBERS INSIDE BIOTOWER WALL.
  - EXISTING STEEL PIPING MANIFOLD, FITTINGS AND APPURTENANCES SHALL BE PREPARED AND PAINTED, IN ACCORDANCE WITH SPECIFICATION SECTION 09900, COATING SYSTEM 4, AND AS DIRECTED BY OWNER. PAINTING SHALL BEGIN AT FLANGE INTERFACE BETWEEN 16" DIP AND 16" STEEL PIPE, PVC LATERALS ARE NOT TO BE PAINTED.
  - REMOVE AND DISPOSE OF ALL EXISTING PIPE HANGERS, REPLACE WITH STAINLESS STEEL HANGERS AS SPECIFIED.
  - ALL NOZZLES SHALL REMAIN.

	<b>REVISION</b> NO. DATE 0 1/14/08 ISSUED FOR BID
<b>HORNER &amp; SHIFRIN, INC.</b> <b>ENGINEERS</b>	
CITY OF O'FALLON, MISSOURI BIOTOWER COMPLEX MEDIA REPLACEMENT CONTRACT NO. 07-006	
DEMOLITION AND REHABILITATION PLAN AND SECTIONS	
DATE: 1/14/2008	
DESIGNED: JTL	
DRAWN: JDG	
CHECKED: JEM	
JOB NO. 07.083	
REF. NO.	
SHEET 3 OF 12	
D1	