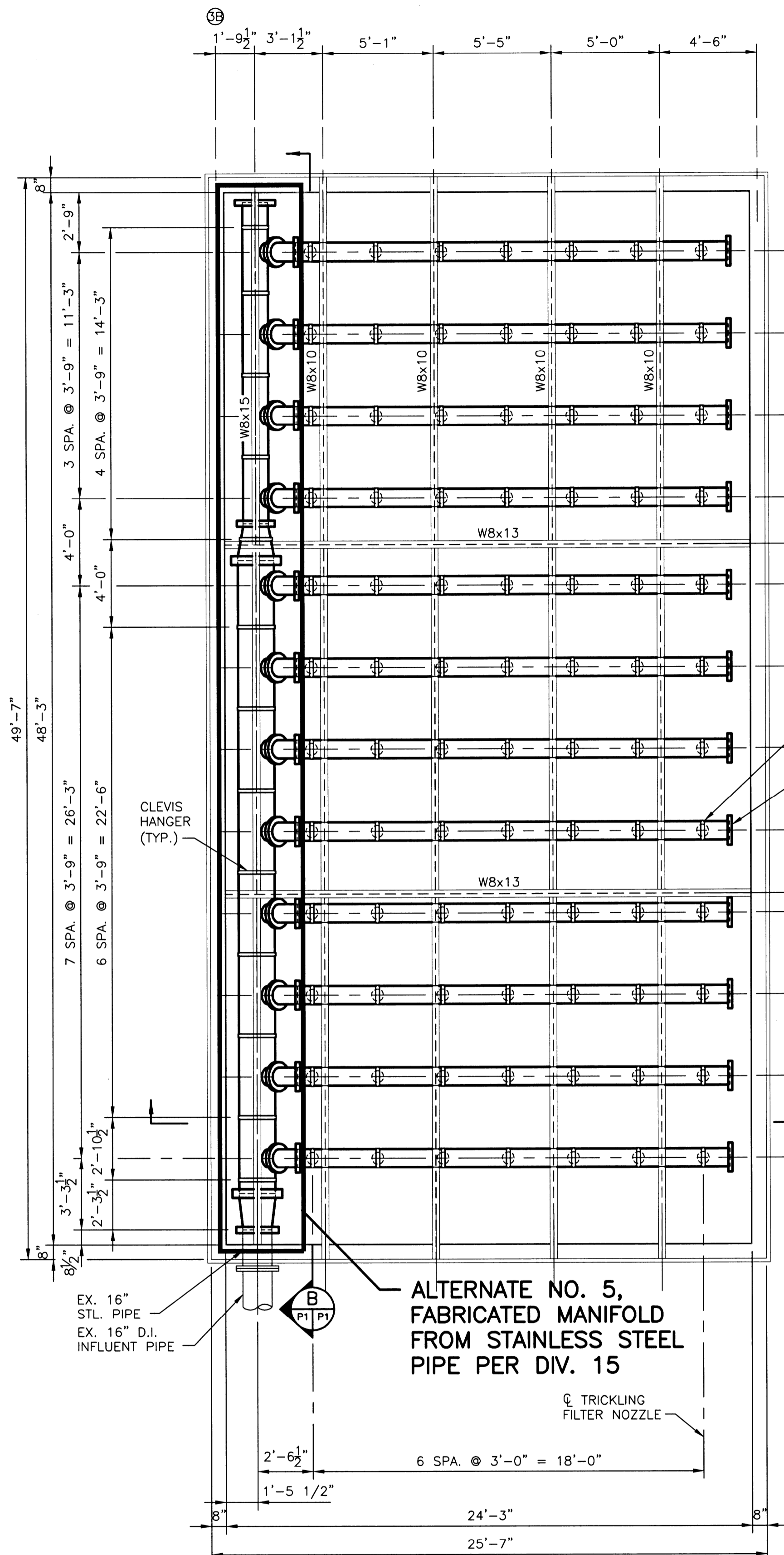
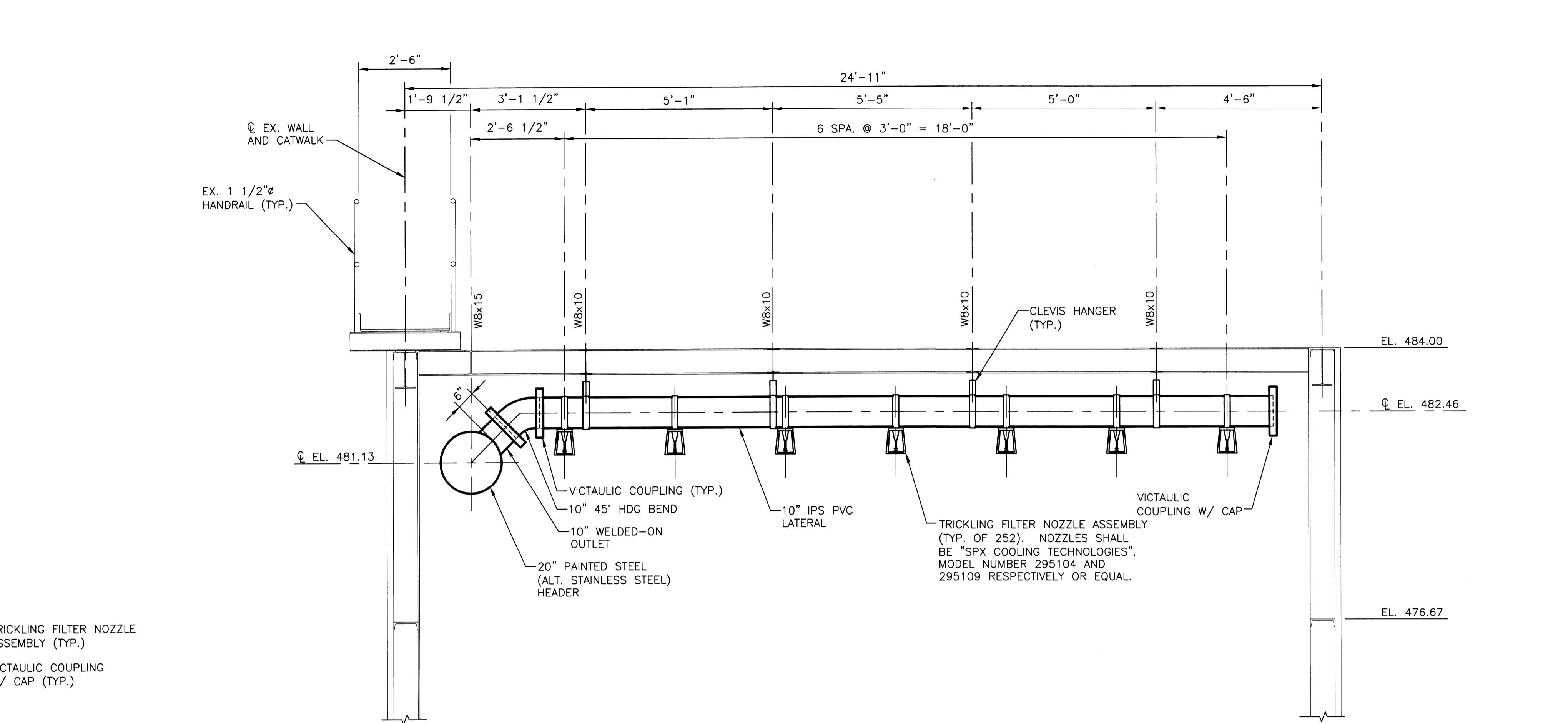


DWG: M:\07083\07083P01.dwg
 CTR: Hs_fulsize.ctb
 PLOT DATE: 1/14/2008 7:48:22 AM
 OPERATOR: BUSNITINE

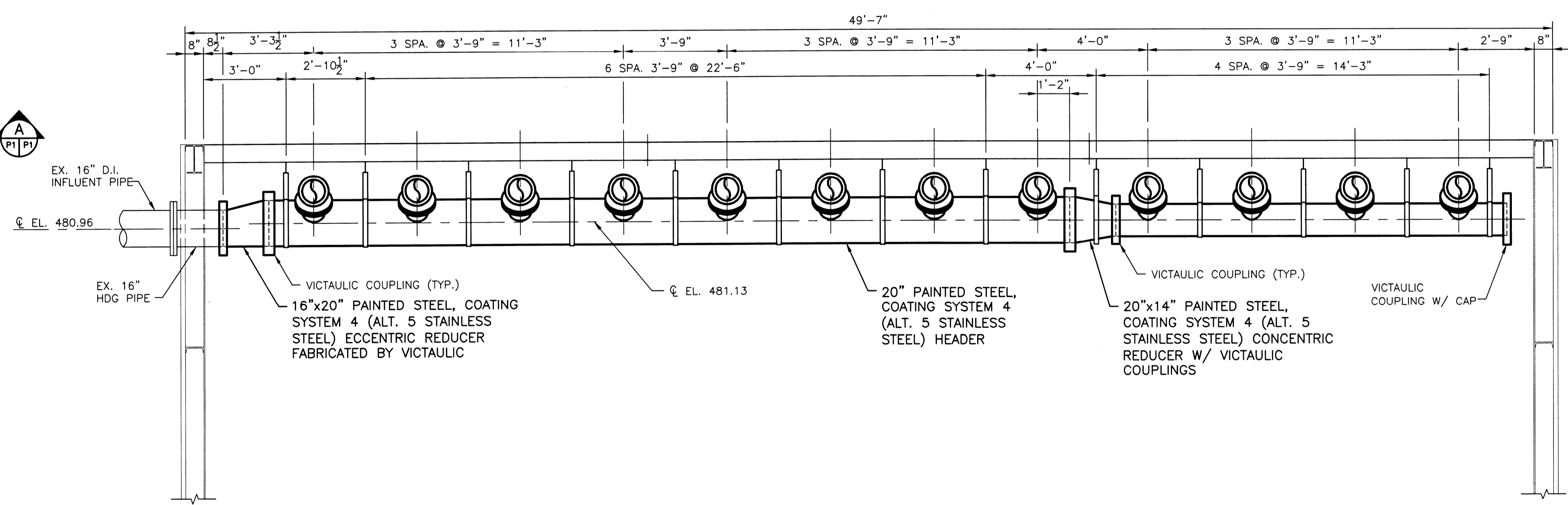


PLAN — HEADER LATERAL SUPPORT BEAMS
 SCALE: 1/4"=1'-0"

ALTERNATE NO. 5, FABRICATED MANIFOLD FROM STAINLESS STEEL PIPE PER DIV. 15



A SECTION
 P1 P1 SCALE: 1/2"=1'-0"



B SECTION
 P1 P1 SCALE: 1/2"=1'-0"

***ALL WORK ON THIS DRAWING PART OF ALTERNATE NO. 1 AND ALTERNATE NO. 5, SEE BID FORM PARAGRAPH 4.C.**

THE PROFESSIONALS WHOSE QUALITIES AND SKILLS APPEAR HERE, ASSUME RESPONSIBILITY FOR THE ACCURACY OF THE INFORMATION CONTAINED HEREIN. ANY AND ALL INFORMATION, SPECIFICATIONS, CONDITIONS OF CONTRACT, ORDERS OR OTHER DOCUMENTS WHICH ARE PART OF THIS PROJECT FOR WHICH THIS SEAL INDICATES RESPONSIBILITY.



HORNER & SHIRIN, INC.
 ENGINEERS

CITY OF O'FALLON, MISSOURI
 BIOTOWER COMPLEX MEDIA REPLACEMENT
 CONTRACT NO. 07-006

DISTRIBUTION SYSTEM IMPROVEMENTS
 PLAN AND DETAILS

DATE:	1/14/2008
DESIGNED:	RAH
DRAWN:	BDV
CHECKED:	JEM
JOB NO. REF. NO.	07.083
SHEET	7 OF 12

NO.	DATE	REVISION
0	1/14/08	ISSUED FOR BID