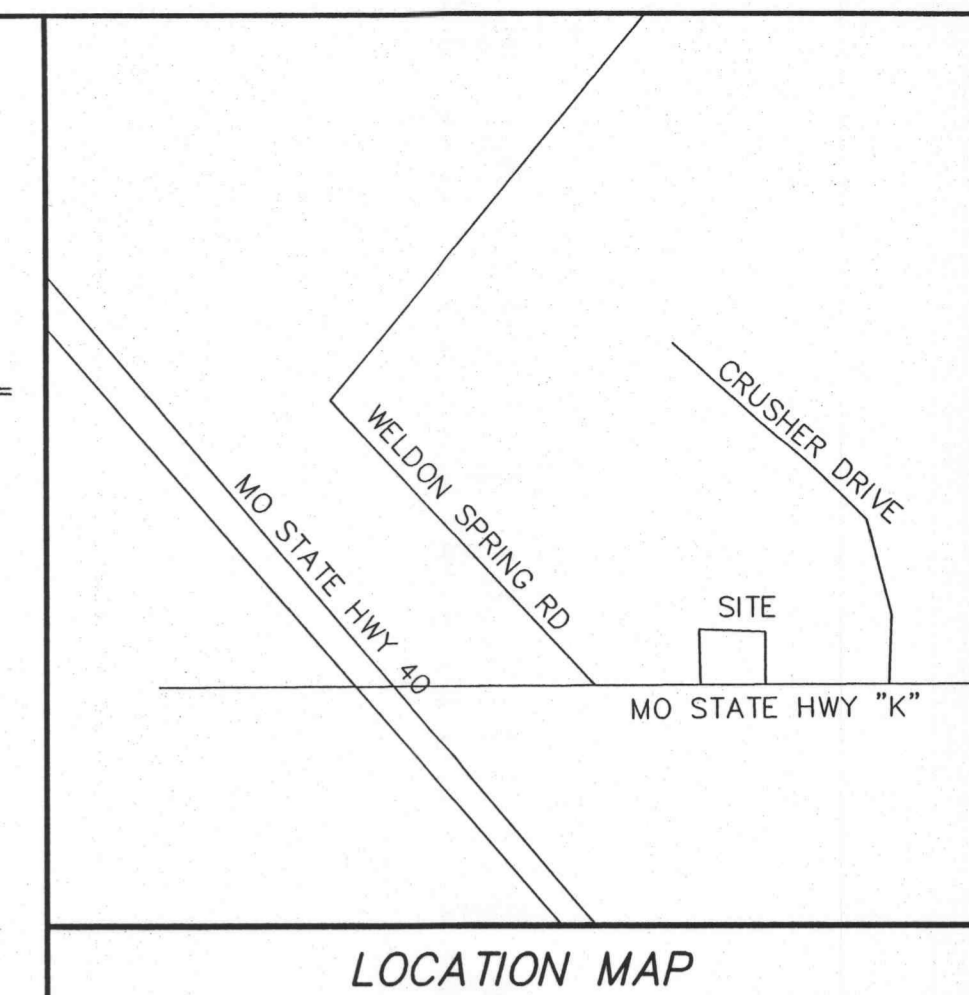
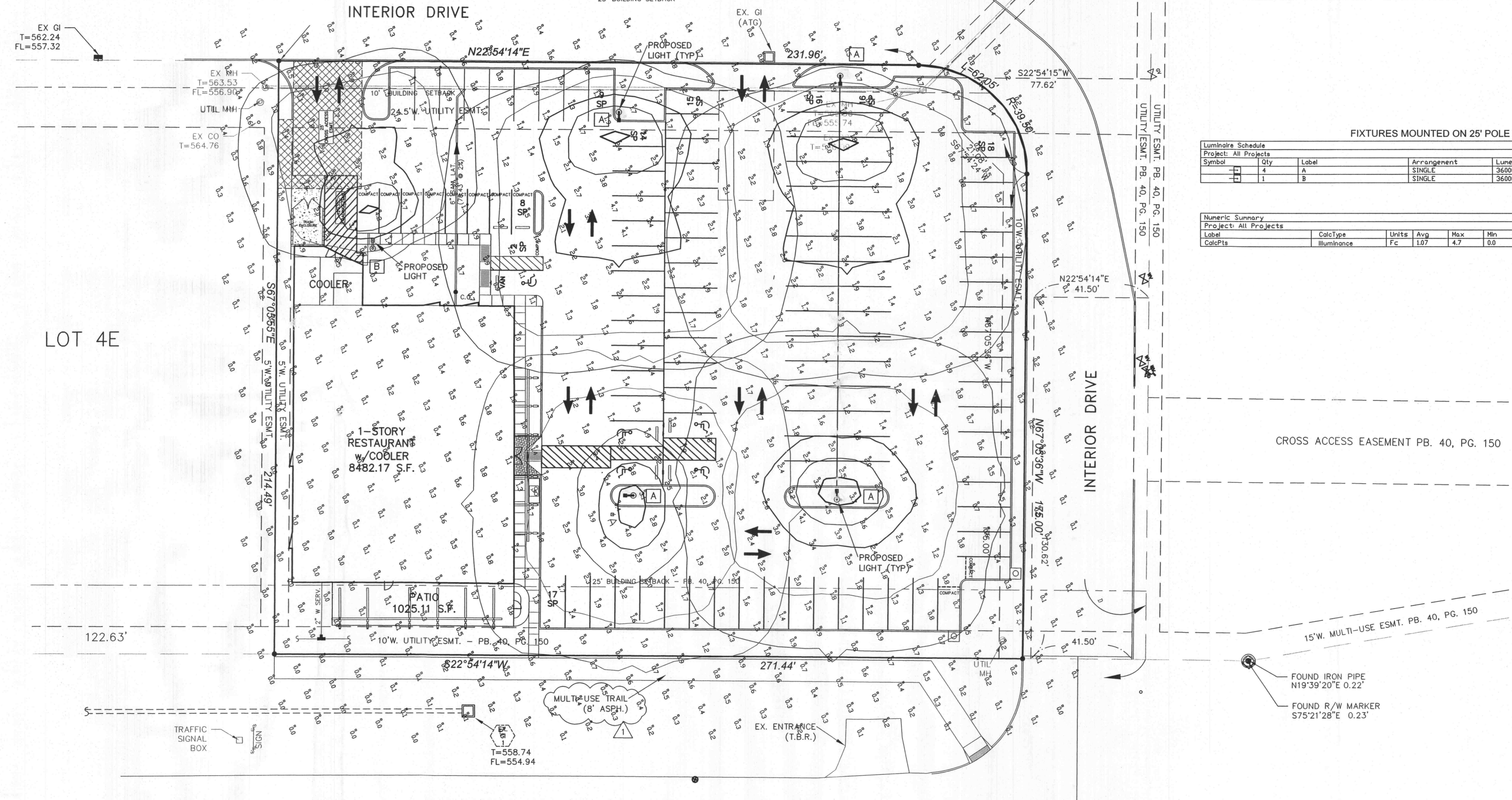
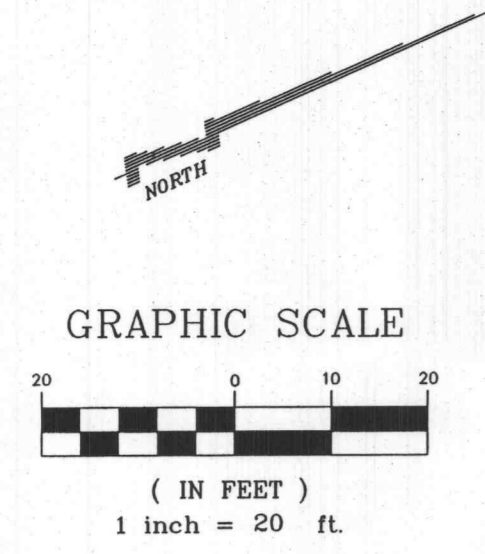


Lighting Plan for BISTRO of JAPAN O'Fallon, MO



LOT 3
WILLIAM H. ERKER SUBDIVISION

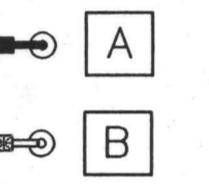


FIXTURES MOUNTED ON 25' POLE WITH 2' BASE

Symbol	Qty	Label	Arrangement	Lumens	LLF	Description	Watts	Total Watts
A	4	A	SINGLE	36000	0.729	AEM-400-MH-XX-SS	400	400
B	1	B	SINGLE	36000	0.794	AEM-400-MH-XX-SL	400	400

Numeric Summary							
Label	CalcType	Units	Avg	Max	Min	Avg/Min	Max/Min
Project: All Projects							
CalcPts	ILLUMINANCE	Fc	1.07	4.7	0.0	0.00	0.00

LEGEND



PHOTOMETRICS PREPARED BY:
LIGHTING ASSOCIATES
186 EAST KIRKHAM AVENUE
WEBSTER GROVES, MO 63119
636-446-0200



O'FALLON P & Z CASE #: 905.01

No.	Date	Description	By
1	7-27-06	REV PER CITY COMMENT	JRE

Prepared For: JOHNNY YOON
523 Malinmoor Drive
St. Charles, MO 63304
(636) 650-3937

Zavradinos Professional Services, Inc.
Engineers Surveyors Planners
17813 Edison Avenue, Suite 201
Chesterfield, MO 63005
636-946-5555

Job Number: 04152
Sheet: 4 of 11

NOTE: LIGHTING PLAN IS FOR PHOTOMETRICS ONLY!

Missouri One Call System, Inc.
Call Before You Dig!
1-800-DIG-RITE
(1-800-344-7483)

All the improvements & facilities and utilities, above ground and underground shown herein were plotted from available information and do not necessarily reflect the actual existence, nonexistence, elevation, size, type, number or location of these or other improvements, facilities, or utilities. The General Contractor and/or owner shall be responsible for verifying the actual location & elevation of all improvements, facilities, & utilities shown or not shown, and said improvements, facilities, & utilities shall be located in the field prior to any grading, excavation or construction of any improvements. These provisions shall in no way absolve any party from complying with the Underground Facility Safety & Damage Prevention Act, Chapter 319, RSMo. CALL MISSOURI ONE-CALL, 1-800-DIG-RITE.

M:\land\Projects\14552-DIG-RITE\SUBDIVISION\14552-DIG-RITE\14552-DIG-RITE.dwg, 7/27/2006 1:32:38 PM