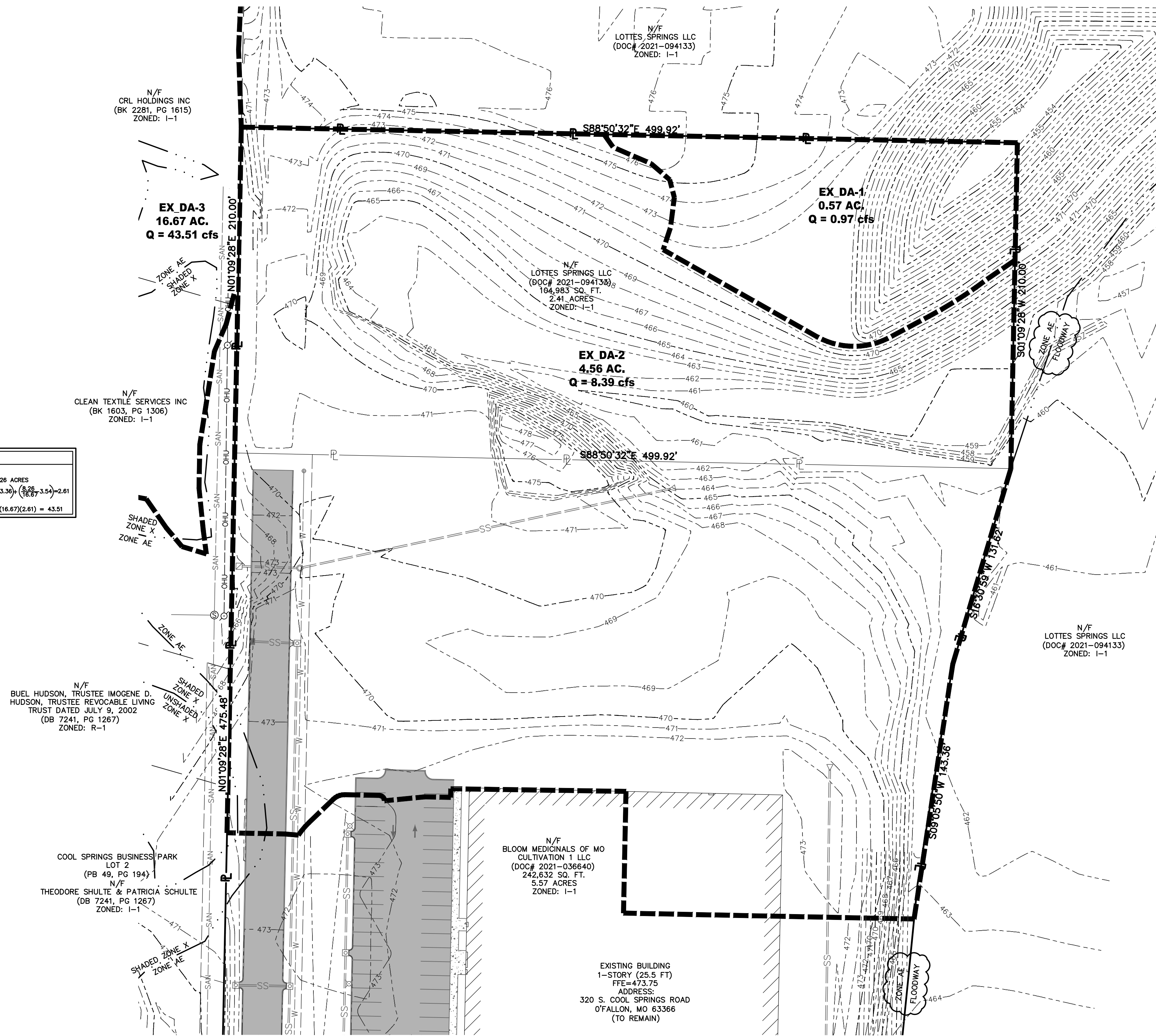
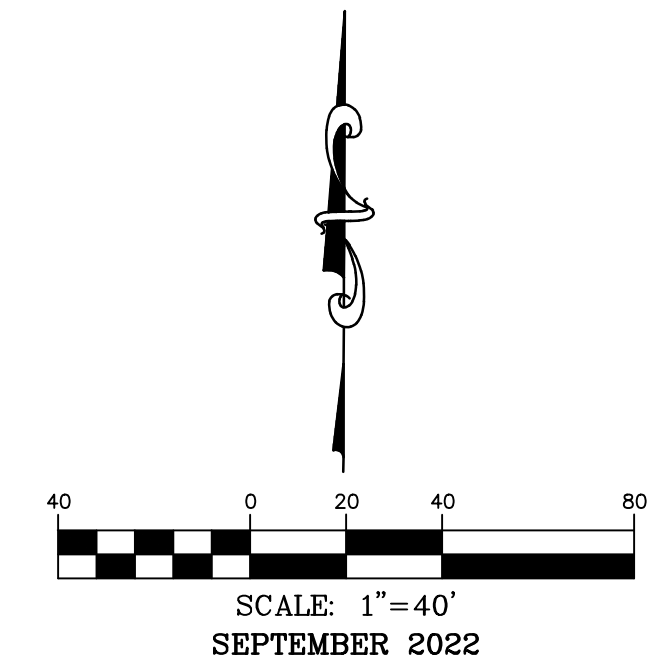
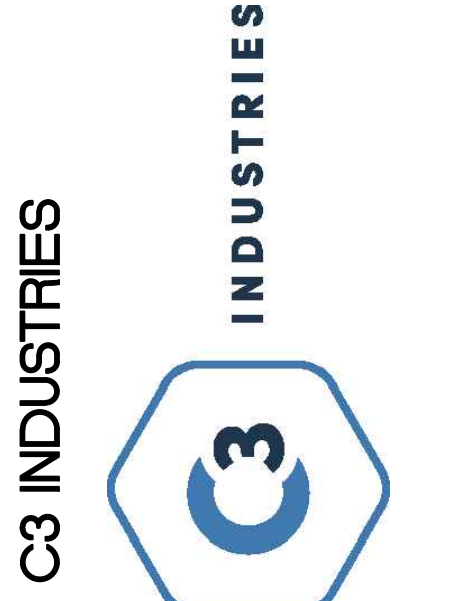


# EXISTING DRAINAGE AREA MAP



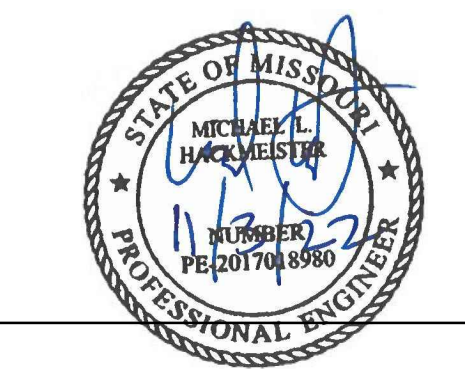
ALL AREAS PI VALUE OPEN = 1.70 PI VALUE GRAVEL = 3.36 PI VALUE PAVEMENT/BUILDING = 3.54		
<b>EX_DA-01</b> OPEN = 0.57 ACRES GRAVEL = 0.00 ACRES PAVEMENT/BUILDING = 0.00 ACRES $PI = \frac{(0.57 \times 1.70) + (0.00 \times 3.36) + (0.00 \times 3.54)}{0.57 + 0.00 + 0.00} = 1.70$ $Q(15YR, 20MIN) = API = (0.57)(1.70) = 0.97$	<b>EX_DA-02</b> OPEN = 4.20 ACRES GRAVEL = 0.00 ACRES PAVEMENT/BUILDING = 0.36 ACRES $PI = \frac{(4.20 \times 1.70) + (0.00 \times 3.36) + (0.36 \times 3.54)}{4.20 + 0.00 + 0.36} = 1.84$ $Q(15YR, 20MIN) = API = (4.56)(1.84) = 8.39$	<b>DA-03</b> OPEN = 8.41 ACRES GRAVEL = 0.00 ACRES PAVEMENT/BUILDING = 8.26 ACRES $PI = \frac{(8.41 \times 1.70) + (0.00 \times 3.36) + (8.26 \times 3.54)}{8.41 + 0.00 + 8.26} = 2.61$ $Q(15YR, 20MIN) = API = (16.67)(2.61) = 43.51$

TOTAL EXISTING FLOWS = 52.87 cfs



**COCHRAN**  
 North Office  
 8 East Main Street  
 Wentzville, Missouri 63385  
 Missouri State Certificate of Authority Number: 2010000046  
 Cochran Project No. M20-8003C

Missouri State Certificate of Authority Number: 2010000046  
 Cochran Project No. M20-8003C



DATE  
 Michael L. Hackmeister No. E-2017018980  
 Registered Professional Engineer  
 State of Missouri  
 for Cochran Engineering & Surveying

**Developer Information**  
 BLOOM MEDICINALS OF MO CULTIVATION 1 LLC  
 2082 SOUTH STATE STREET, ANN ARBOR, MI 48104  
 (734)-323-1822

**Owner Information**  
 BLOOM MEDICINALS OF MO CULTIVATION 1 LLC  
 2082 SOUTH STATE STREET, ANN ARBOR, MI 48104

P+Z No. 22-002935

City No.

Page No.

**C10**

All OSHA rules & regulations established for the type of construction required by these plans shall be strictly followed (e. Trenching, Blasting, etc.)  
**MISSOURI DIGITAL**  
**1-800-DIG-RITE on 811**  
**www.motcall.com**

Existing Drainage Area Map