

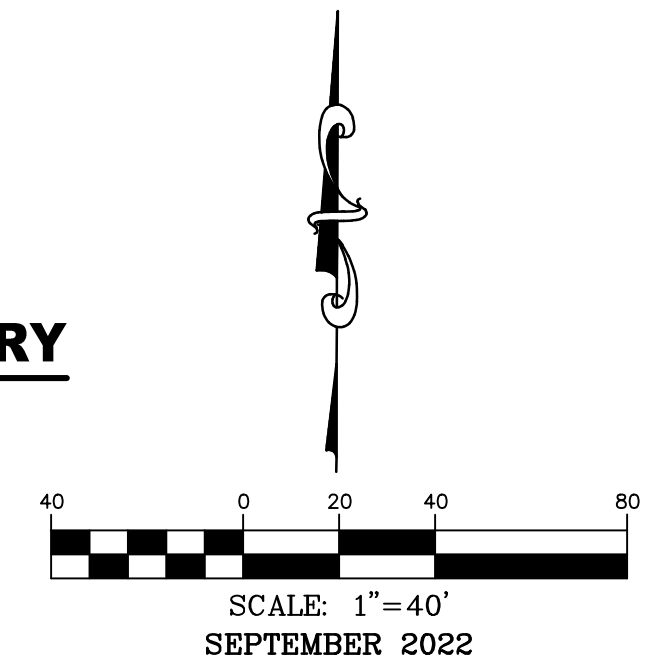
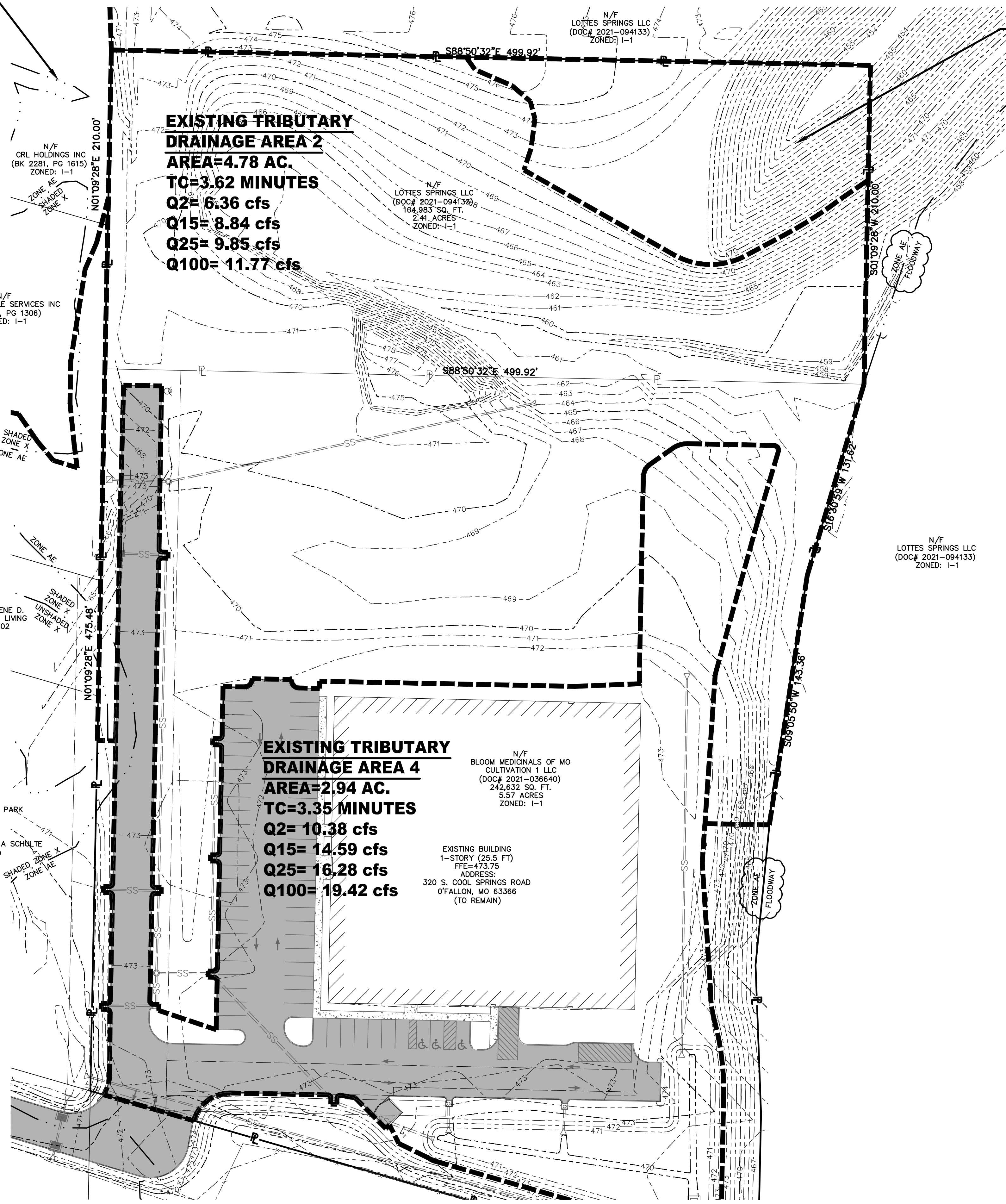
EXISTING TRIBUTARY DRAINAGE AREA MAP

EXISTING TRIBUTARY DRAINAGE AREA 3
AREA=16.67 AC.
TC=11.22 MINUTES
Q2= 37.24 cfs
Q15= 53.68 cfs
Q25= 60.22 cfs
Q100= 71.86 cfs

EXISTING TRIBUTARY DRAINAGE AREA 2
AREA=4.78 AC.
TC=3.62 MINUTES
Q2= 6.36 cfs
Q15= 8.84 cfs
Q25= 9.85 cfs
Q100= 11.77 cfs

EXISTING TRIBUTARY DRAINAGE AREA 1
AREA=0.57 AC.
TC=1.21 MINUTES
Q2= 0.75 cfs
Q15= 1.02 cfs
Q25= 1.14 cfs
Q100= 1.37 cfs

EXISTING TRIBUTARY DRAINAGE AREA 4
AREA=2.94 AC.
TC=3.35 MINUTES
Q2= 10.38 cfs
Q15= 14.59 cfs
Q25= 16.28 cfs
Q100= 19.42 cfs



C3 INDUSTRIES

INDUSTRIES

636-332-4574 (tel.)
 636-327-0760 (fax)
 wen@cochraneng.com

North Office
 8 East Main Street
 Wentzville, Missouri 63385

COCHRAN

- Civil Engineering
- Land Surveying
- Architecture
- Site Development
- General Consulting
- Master Planning

Missouri State Certificate
 of Authority Number: 2010000046
 Cochran Project No. M20-8003C

DATE

Michael L. Hackmeister No. E-2017018980
 Registered Professional Engineer
 State of Missouri
 for Cochran Engineering & Surveying

Developer Information
 BLOOM MEDICINALS OF MO CULTIVATION 1 LLC
 2082 SOUTH STATE STREET: ANN ARBOR, MI 48104
 (734)-323-1822

Owner Information
 BLOOM MEDICINALS OF MO CULTIVATION 1 LLC
 2082 SOUTH STATE STREET: ANN ARBOR, MI 48104

Existing Tributary Drainage Area Map

P+Z No. 22-002935

City No.

Page No.

C12

All OSHA rules & regulations established for the type of construction required by these plans shall be strictly followed (e. Trenching, Blasting, etc.)

MISSOURI DIGITAL

1-800-DIG-RITE on 611
www.motcall.com

City of O'Fallon Standard Notes and Details - July 2019