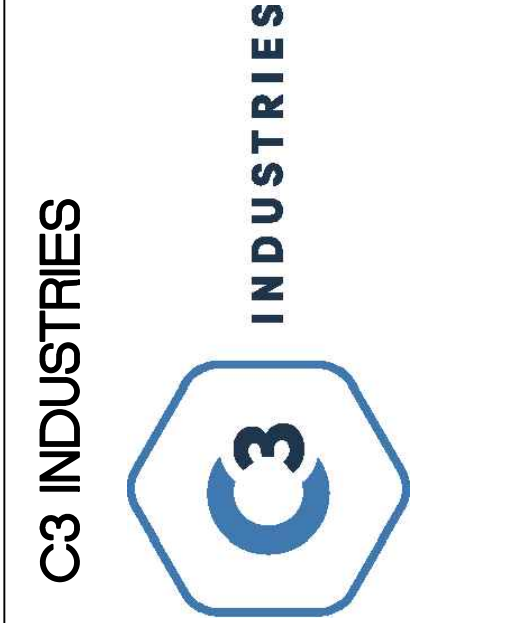
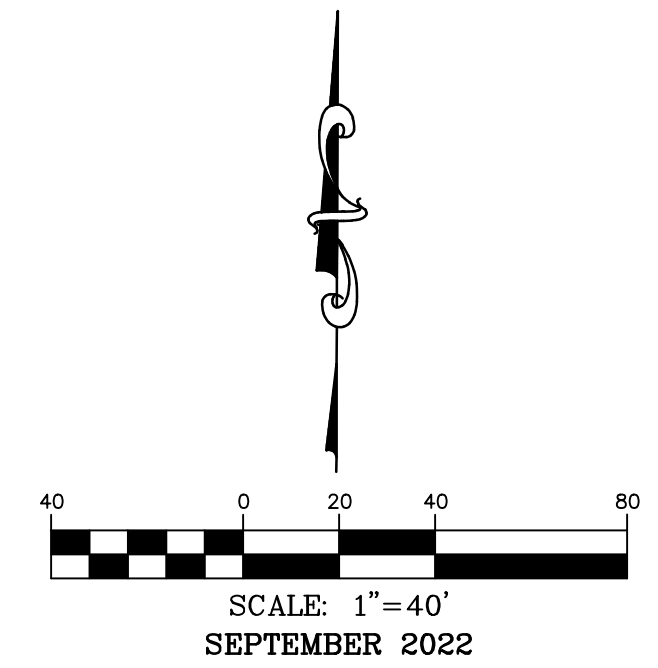


PROPOSED TRIBUTARY DRAINAGE AREA MAP



C3 INDUSTRIES
 636-332-4574 (tel.)
 636-327-0760 (fax)
 wen@cochraneng.com
 8 East Main Street
 Wentzville, Missouri 63385

COCHRAN
 Civil Engineering
 Land Surveying
 Architecture
 Site Development
 General Consulting
 Master Planning

Missouri State Certificate
 of Authority Number: 2010000046
 Cochran Project No. M20-8003C



DATE
 Michael L. Hackmeister No. E-2017018980
 Registered Professional Engineer
 State of Missouri
 for Cochran Engineering & Surveying

Developer Information
 BLOOM MEDICALS OF MO CULTIVATION 1 LLC
 2082 SOUTH STATE STREET: ANN ARBOR, MI 48104
 (734)-323-1822

Owner Information
 BLOOM MEDICALS OF MO CULTIVATION 1 LLC
 2082 SOUTH STATE STREET: ANN ARBOR, MI 48104

P+Z No. 22-002935

City No.

Page No.

C13

CALL OR CLICK 3 DAYS BEFORE YOU DIG!

 MISSOURI ONECALL
 1-800-DIG-RITE on 811
 www.motcall.com

City of O'Fallon Standard Notes and Details - July 2019

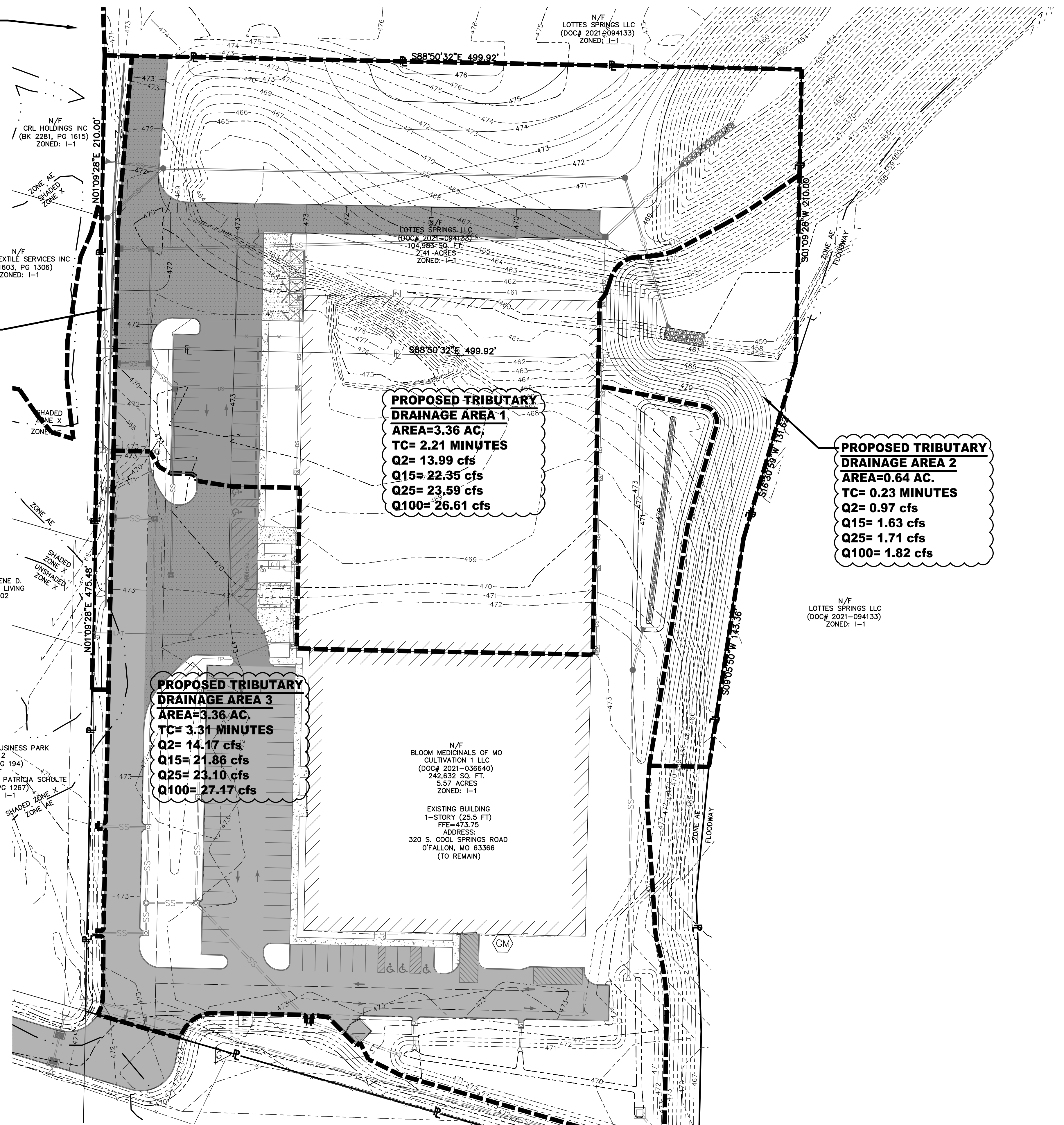
OFF-SITE TRIBUTARY DRAINAGE AREA 1
 AREA=16.67 AC.
 TC= 11.22 MINUTES
 Q2= 38.30 cfs
 Q15= 54.41 cfs
 Q25= 57.71 cfs
 Q100= 76.16 cfs

PROPOSED TRIBUTARY DRAINAGE AREA 4
 AREA=0.14 AC.
 TC= 0.66 MINUTES
 Q2= 0.21 cfs
 Q15= 0.36 cfs
 Q25= 0.38 cfs
 Q100= 0.40 cfs

PROPOSED TRIBUTARY DRAINAGE AREA 1
 AREA=3.36 AC,
 TC= 2.21 MINUTES
 Q2= 13.99 cfs
 Q15= 22.35 cfs
 Q25= 23.59 cfs
 Q100= 26.61 cfs

PROPOSED TRIBUTARY DRAINAGE AREA 2
 AREA=0.64 AC.
 TC= 0.23 MINUTES
 Q2= 0.97 cfs
 Q15= 1.63 cfs
 Q25= 1.71 cfs
 Q100= 1.82 cfs

PROPOSED TRIBUTARY DRAINAGE AREA 3
 AREA=3.36 AC,
 TC= 3.31 MINUTES
 Q2= 14.17 cfs
 Q15= 21.86 cfs
 Q25= 23.10 cfs
 Q100= 27.17 cfs



N/F CRL HOLDINGS INC (BK 2281, PG 1615) ZONED: I-1

N/F CLEAN TEXTILE SERVICES INC (BK 1603, PG 1306) ZONED: I-1

N/F BUEL HUDSON, TRUSTEE IMOGENE D. HUDSON, TRUSTEE REVOCABLE LIVING TRUST DATED JULY 9, 2002 (DB 7241, PG 1267) ZONED: R-1

N/F THEODORE SHULTE & PATRICIA SCHULTE (DB 7241, PG 1267) ZONED: I-1

N/F COOL SPRINGS BUSINESS PARK LOT 2 (PB 49, PG 194) ZONED: I-1

N/F BLOOM MEDICALS OF MO CULTIVATION 1 LLC (DOC# 2021-036640) 242,632 SQ. FT. 5.57 ACRES ZONED: I-1

EXISTING BUILDING 1-STORY (25.5 FT) FFE=473.75 ADDRESS: 320 S. COOL SPRINGS ROAD O'FALLON, MO 63366 (TO REMAIN)

N/F LOTTES SPRINGS LLC (DOC# 2021-094133) ZONED: I-1

N/F LOTTES SPRINGS LLC (DOC# 2021-094133) ZONED: I-1

N/F LOTTES SPRINGS LLC (DOC# 2021-094133) 104,983 SQ. FT. 2.41 ACRES ZONED: I-1