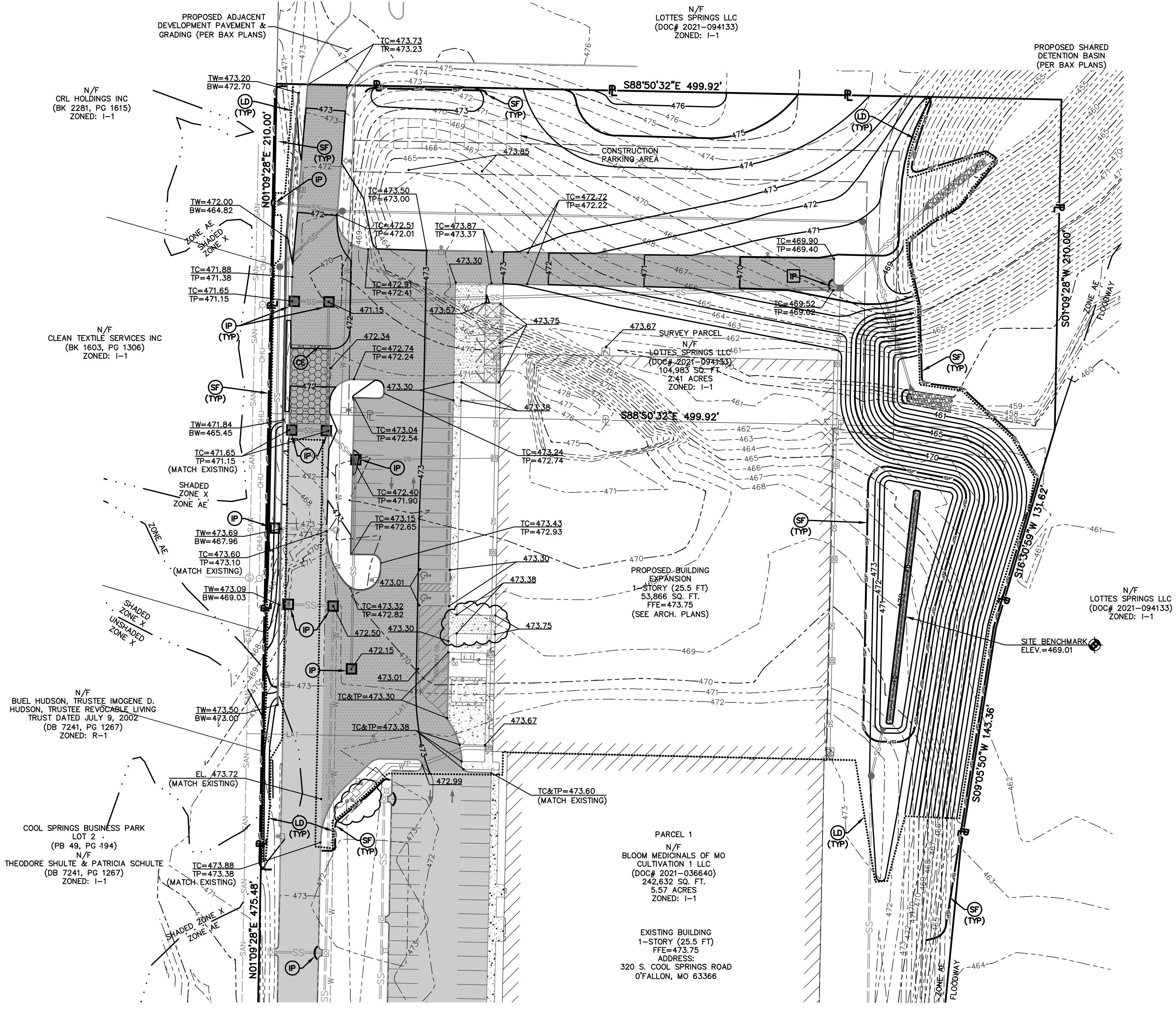
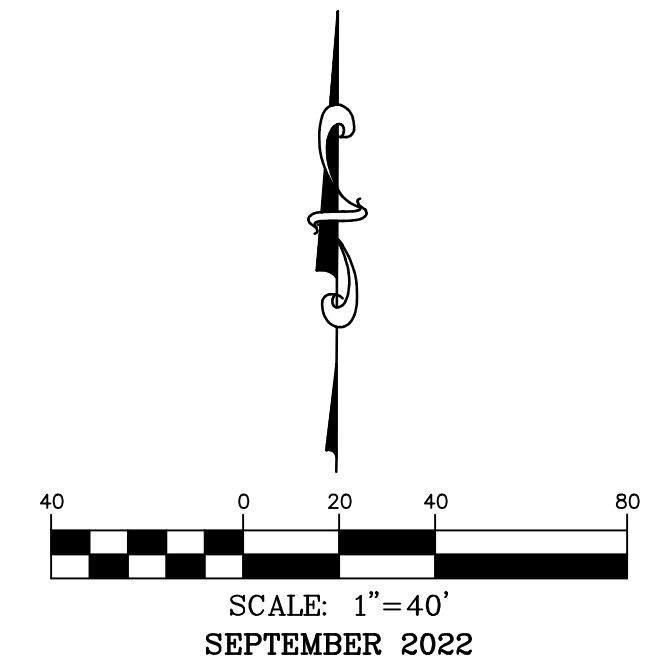


GRADING AND SWPP PLAN



- ### SWPPP LEGEND
- (SF) NEW SILT FENCE. SEE DETAIL, SHEET C7.
 - (IP) NEW INLET PROTECTION. SEE DETAIL, SHEET C7.
 - (NE) NEW CONSTRUCTION ENTRANCE. SEE DETAIL, SHEET C7.
 - (LD) LIMITS OF DISTURBANCE.

C3 INDUSTRIES

636-332-4574 (tel.)
636-327-0760 (fax)
www.motcall.com

COCHRAN
Civil Engineering
Land Surveying
Architecture
Site Development
General Consulting
Master Planning

North Office
8 East Main Street
Wentzville, Missouri 63385

Missouri State Certificate
of Authority Number: 2010000046
Cochran Project No. M20-8003C

DATE

Michael L. Hackmeister No. E-2017018980
Registered Professional Engineer
State of Missouri
for Cochran Engineering & Surveying

Developer Information
BLOOM MEDICALS OF MO CULTIVATION 1 LLC
2082 SOUTH STATE STREET, ANN ARBOR, MI 48104
(734)-323-1822

Owner Information
BLOOM MEDICALS OF MO CULTIVATION 1 LLC
2082 SOUTH STATE STREET, ANN ARBOR, MI 48104

Grading Plan

- NOTE: ALL SPOT ELEVATIONS SHOWN ON THIS PLAN ARE TOP OF PAVEMENT UNLESS OTHERWISE NOTED.
- NOTE: PROVIDE CITY WITH A COPY OF GRADING COMPACTION TEST RESULTS.
- NOTE: ALL TRUCKS SHALL BE WASHED DOWN BEFORE LEAVING SITE.
- SITE DISTURBANCE
TOTAL SITE AREA = 7.98 AC.
DISTURBED AREA = 4.33 AC.

NOTE: ALL INLETS ARE TO RECEIVE INLET SILT FENCE PROTECTION (SEE DETAIL, SHEET C7)

GRADING QUANTITY:
CUT - 415 CY.
FILL - 26,300 CY.

NOTE: THESE QUANTITIES ARE RAW NUMBERS. THE CONTRACTOR SHALL NOT USE THESE NUMBERS AS THEIR BID QUANTITIES. THE CONTRACTOR SHALL DETERMINE THEIR OWN QUANTITIES.

CALL OR CLICK 3 DAYS BEFORE YOU DIG!
MISSOURI
1-800-DIG-RITE on 611
www.motcall.com

| SOIL EROSION/SEDIMENTATION CONTROL OPERATION TIME SCHEDULE | | | | | | | | | | | | |
|---|------|------|-----|------|------|------|------|------|------|------|------|------|
| NOTE: GENERAL CONTRACTOR TO COMPLETE TABLE WITH THEIR SPECIFIC PROJECT SCHEDULE | | | | | | | | | | | | |
| CONSTRUCTION SEQUENCE | MAR. | APR. | MAY | JUN. | JUL. | AUG. | SEP. | OCT. | NOV. | DEC. | JAN. | FEB. |
| TEMPORARY CONTROL MEASURES | | | | | | | | | | | | |
| ROUGH GRADE / SEDIMENT CONTROL | | | | | | | | | | | | |
| PERMANENT CONTROL MEASURES | | | | | | | | | | | | |
| SEED AND FINAL STABILIZATION | | | | | | | | | | | | |

NOTE: IF WATER IS NOT AVAILABLE AT CONSTRUCTION ENTRANCE WASHDOWN AREA, A WATER TRUCK MUST BE PROVIDED. SEE DETAIL, SHEET C7.

BFE = 469.50

NOTE: RIP-RAP SHOWN AT FLARED ENDS WILL BE EVALUATED IN THE FIELD BY THE ENGINEER, CONTRACTOR AND CITY INSPECTOR AFTER INSTALLATION FOR EFFECTIVENESS AND FIELD MODIFIED, IF NECESSARY, TO REDUCE EROSION ON AND OFF-SITE.

All OSHA rules & regulations established for the type of construction required by these plans shall be strictly followed (i.e. Trenching, Blasting, etc.)

City No.

Page No.

C6