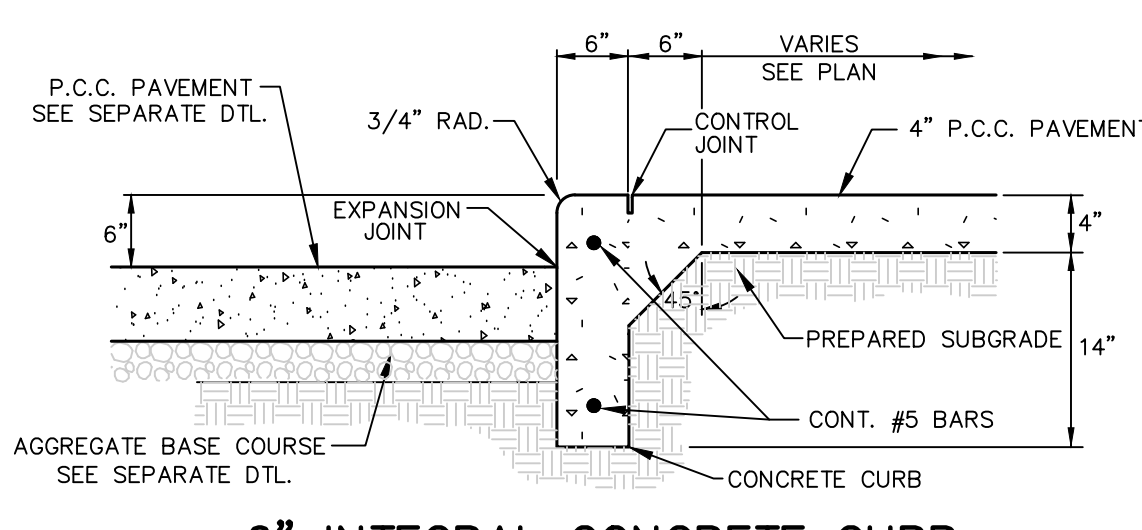
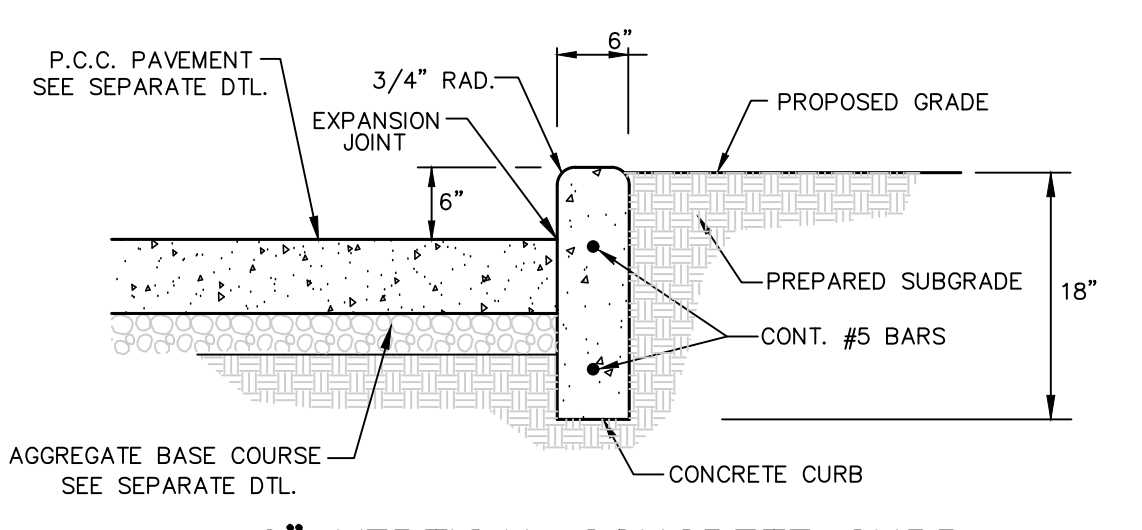


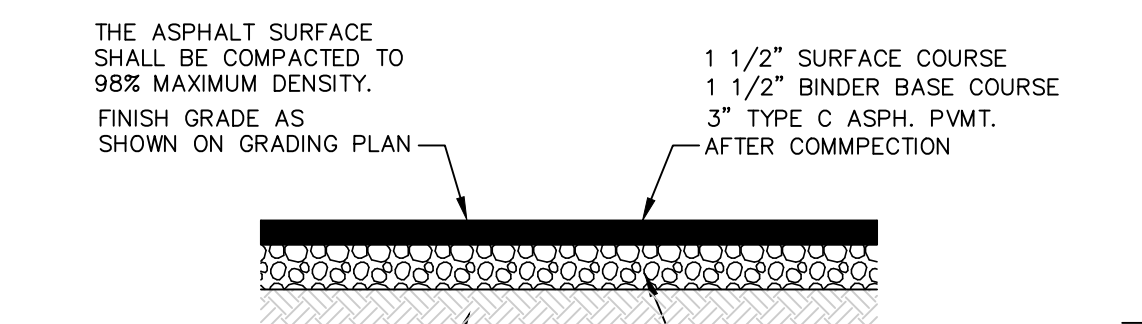
**INTEGRAL ROLLED CURB**  
N.T.S.



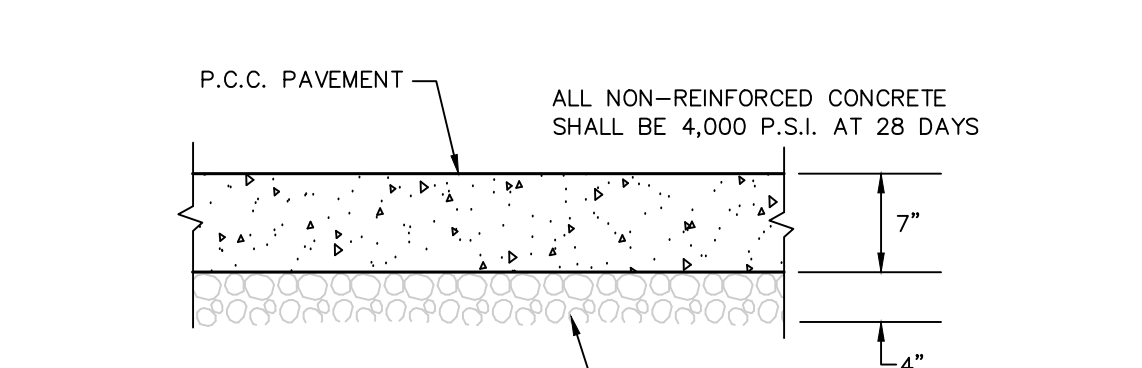
**6\"/>**



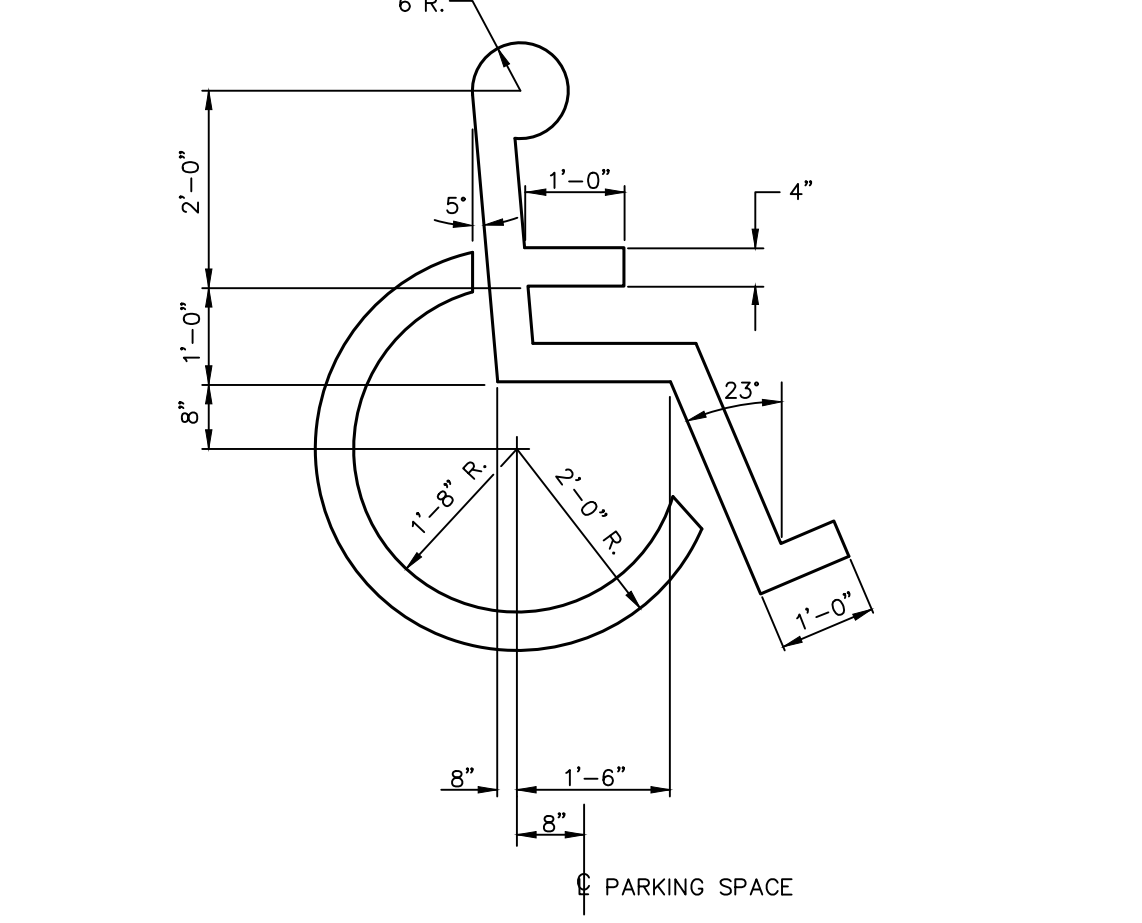
**6\"/>**



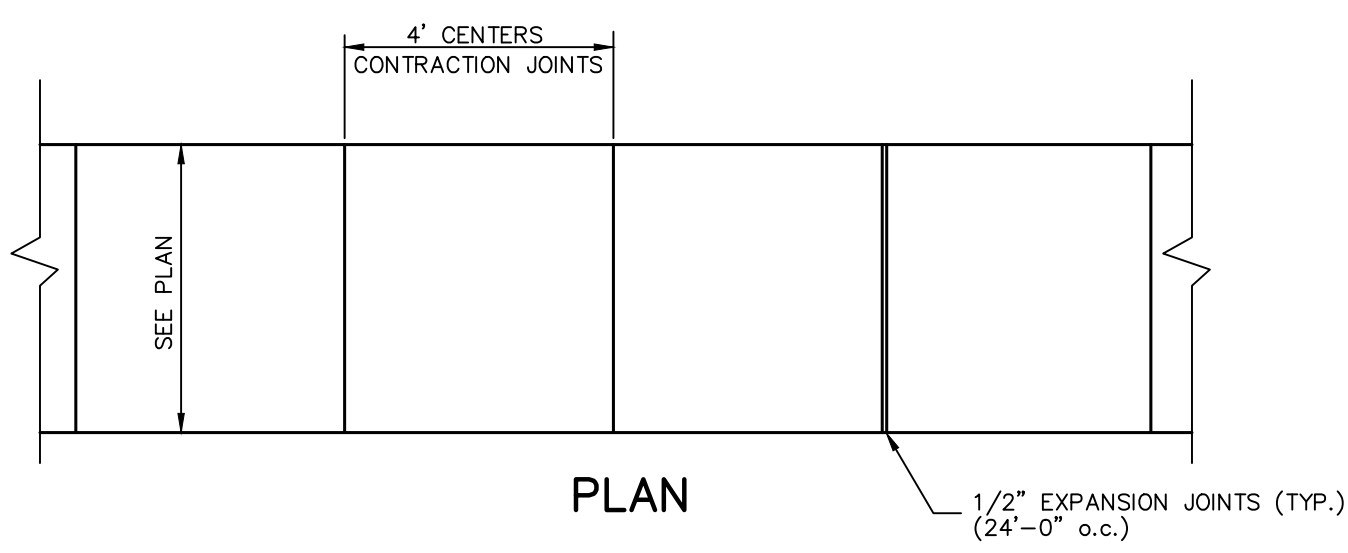
**ASPHALT PAVEMENT DETAIL**  
(FOR TRAIL)  
N.T.S.



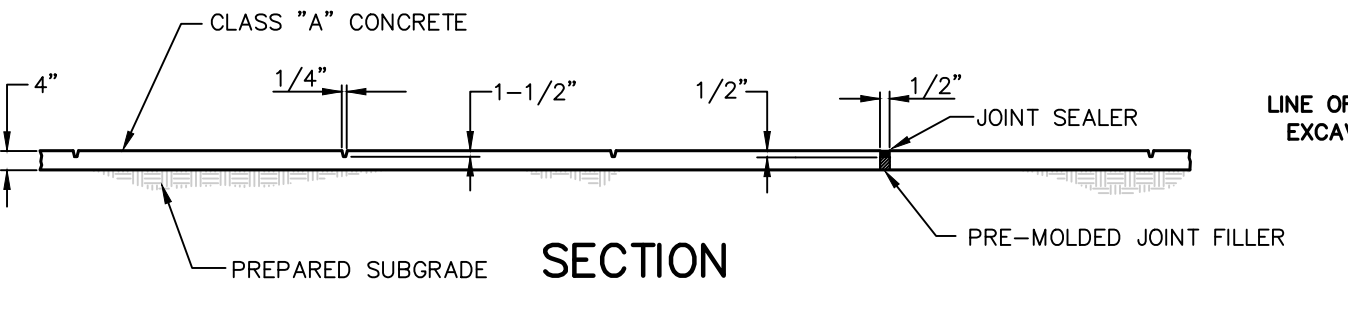
**CONCRETE PAVEMENT SECTION AT TRASH ENCLOSURE**  
N.T.S.



**INTERNATIONAL HANDICAP SYMBOL**  
N.T.S.

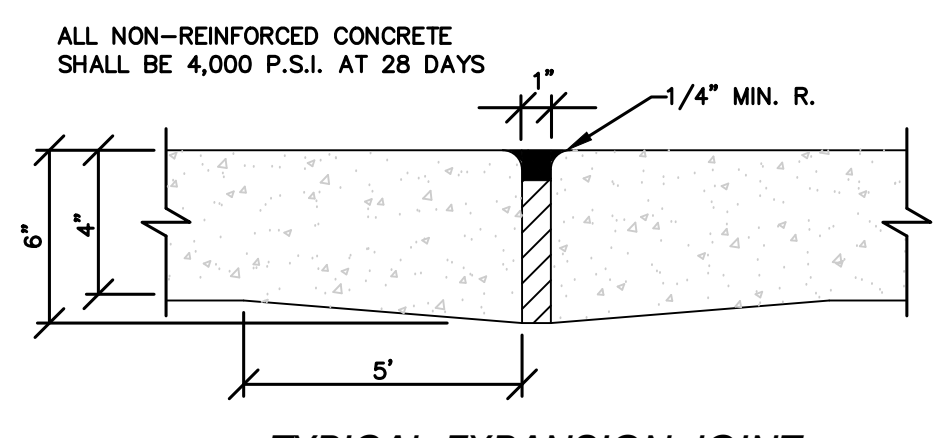


**PLAN**

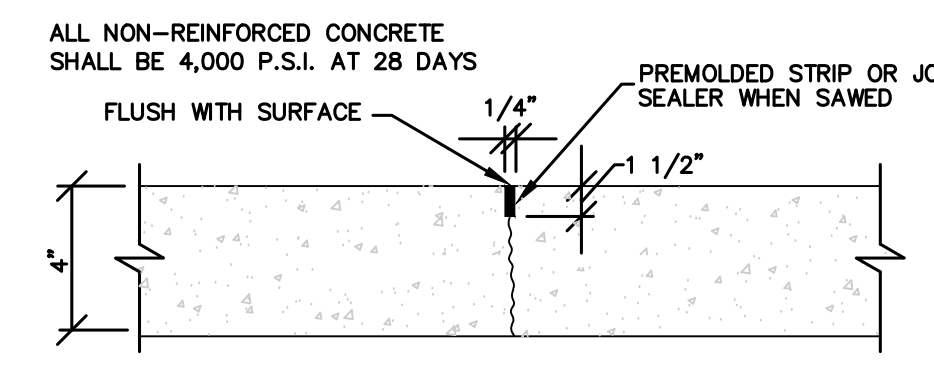


**SECTION**

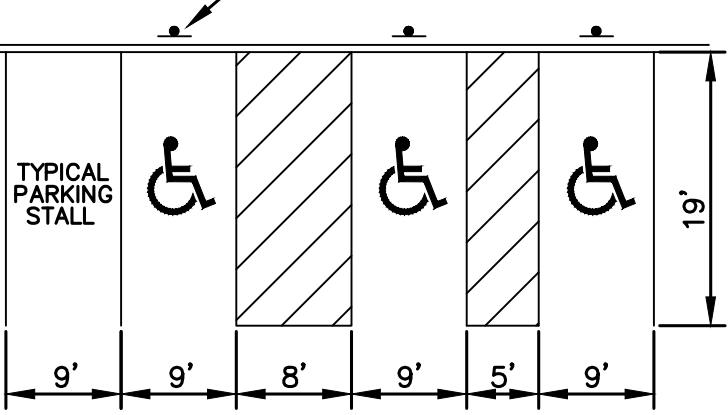
**CONCRETE SIDEWALK DETAIL**  
N.T.S.



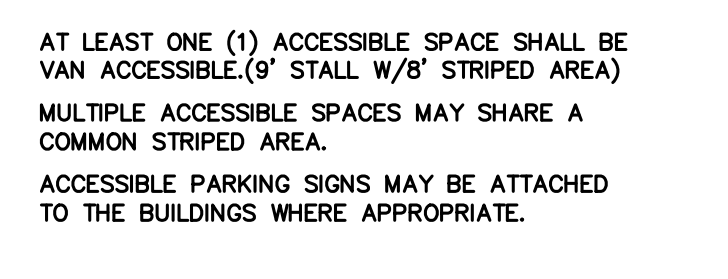
**TYPICAL EXPANSION JOINT TYPE A (4\"/>**



**TYPICAL CONSTRUCTION JOINT TYPE C (4\"/>**

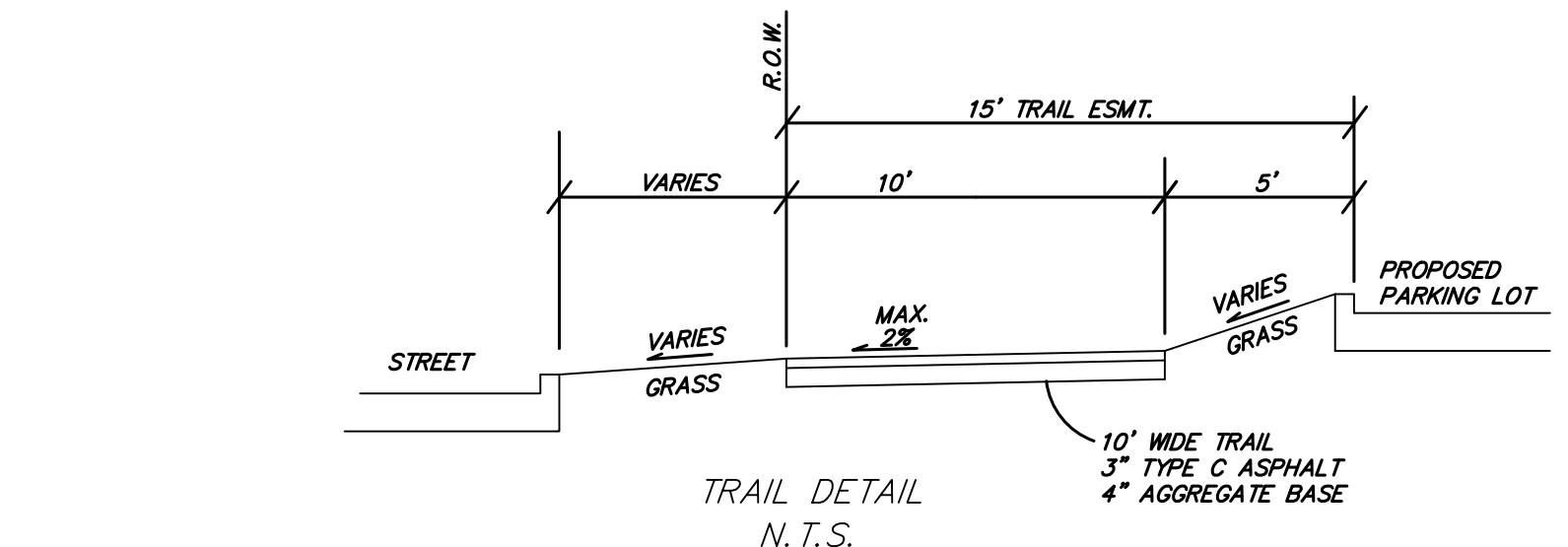


**TYPICAL PARKING SPACE**  
N.T.S.

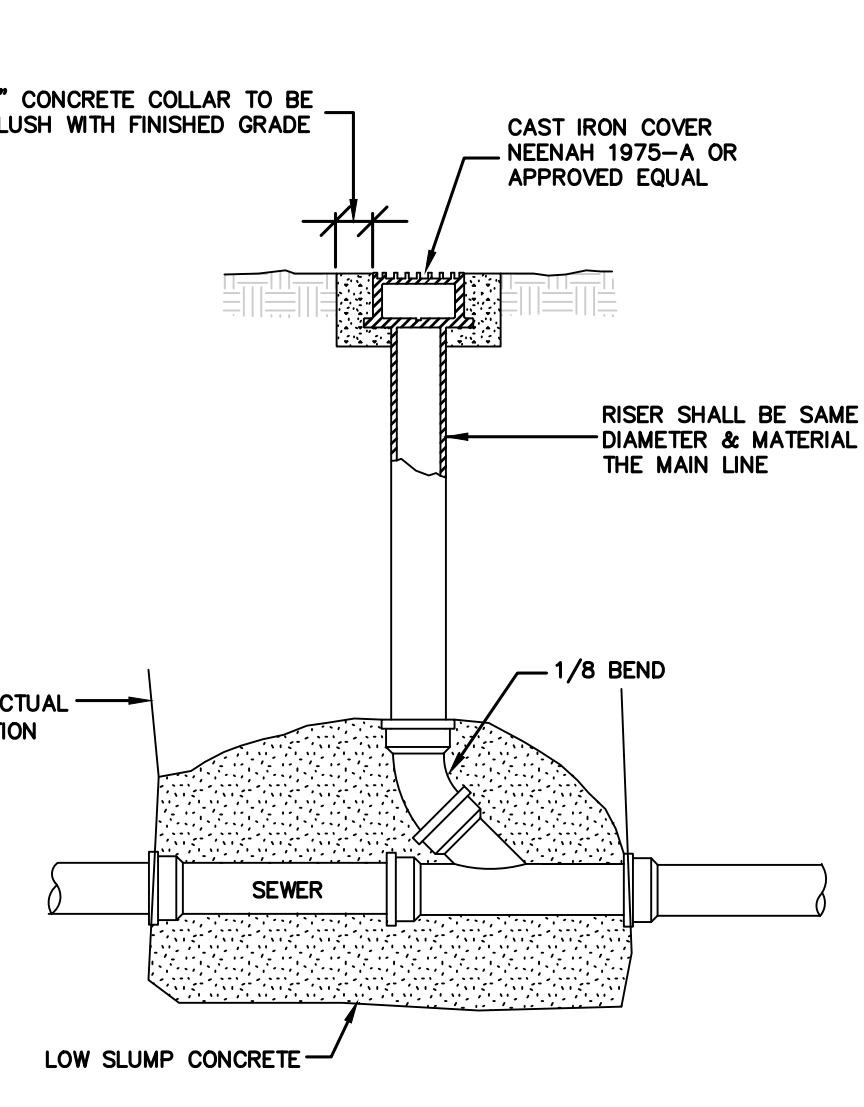


**CURB RAMP DETAIL**  
N.T.S.

- NOTE:**
1. THERE SHALL BE NO STEP AT BUILDING ENTRANCES.
  2. THERE SHALL BE WHEELCHAIR RAMPS OR DROP CURBS AT ACCESSIBLE SPACES.
  3. CURB RAMP SHALL BE MINIMUM 36\"/>



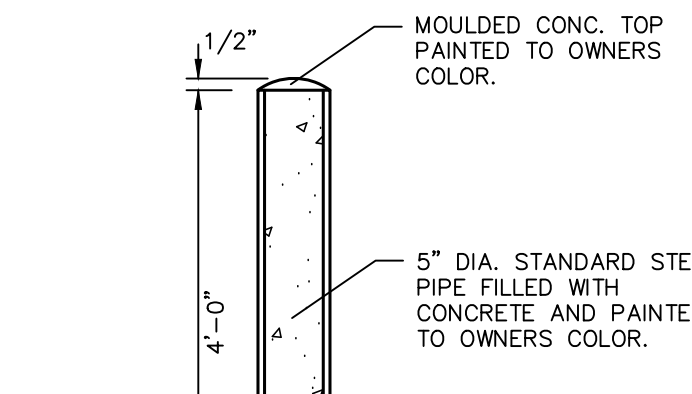
**TRAIL DETAIL**  
N.T.S.



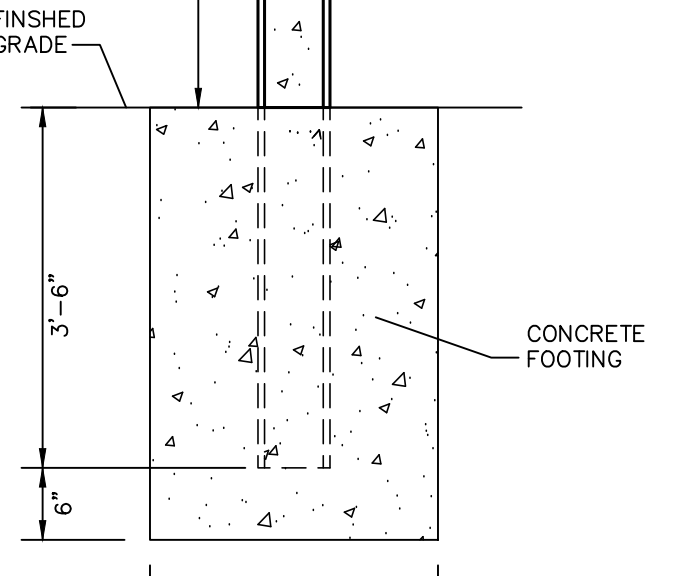
**CLEAN OUT DETAIL**  
N.T.S.  
(SANITARY SEWER ONLY)



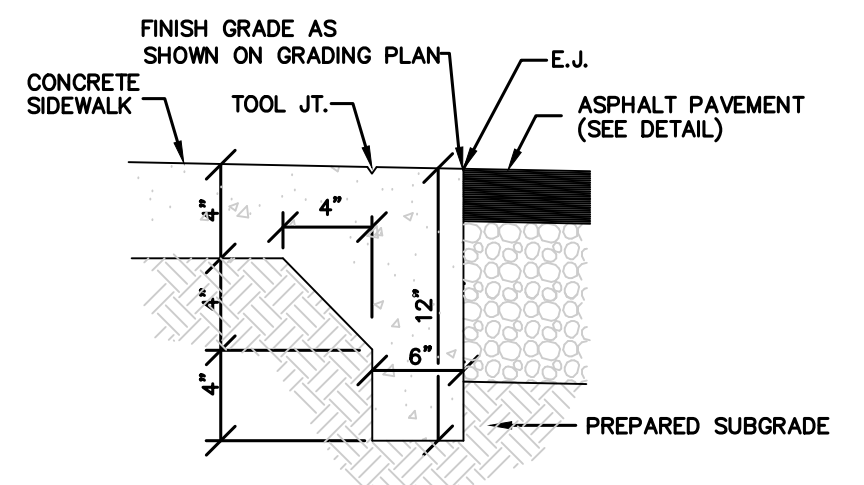
**ONE WAY SIGN DETAIL**  
N.T.S.



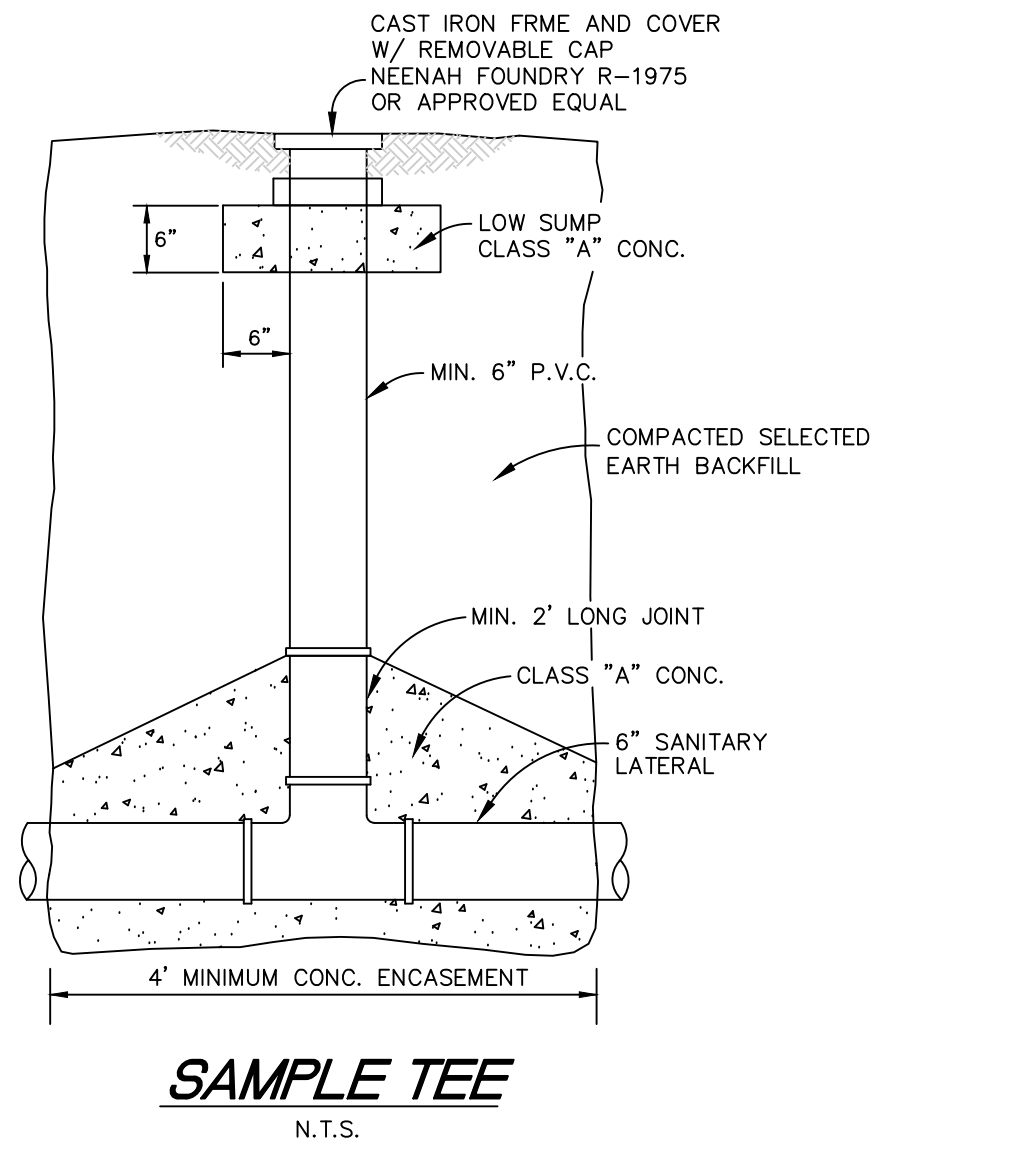
**BOLLARD DETAIL**  
N.T.S.



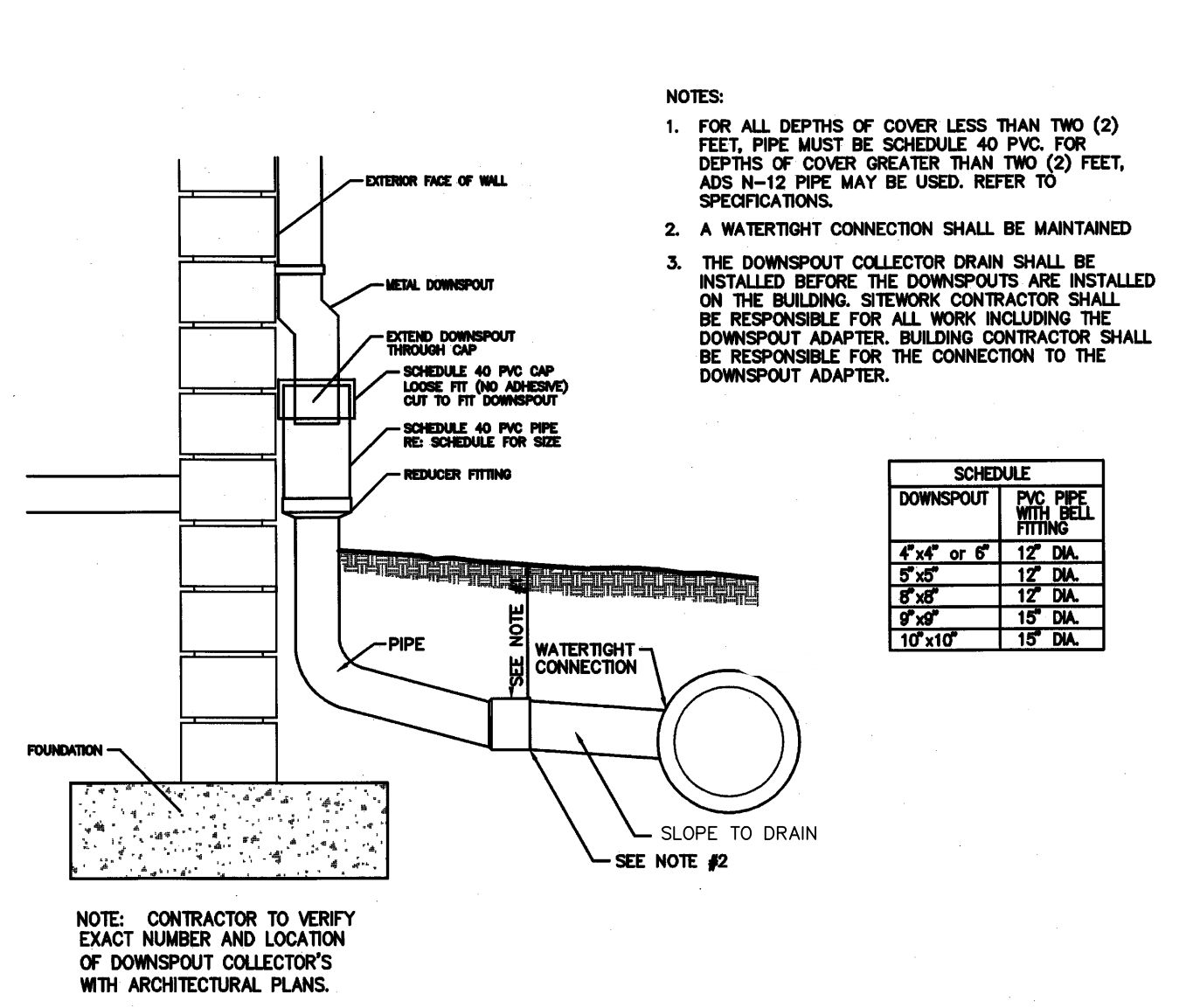
**TYPICAL SECTION - UNREINFORCED RETAINING WALL**  
SCALE: NONE



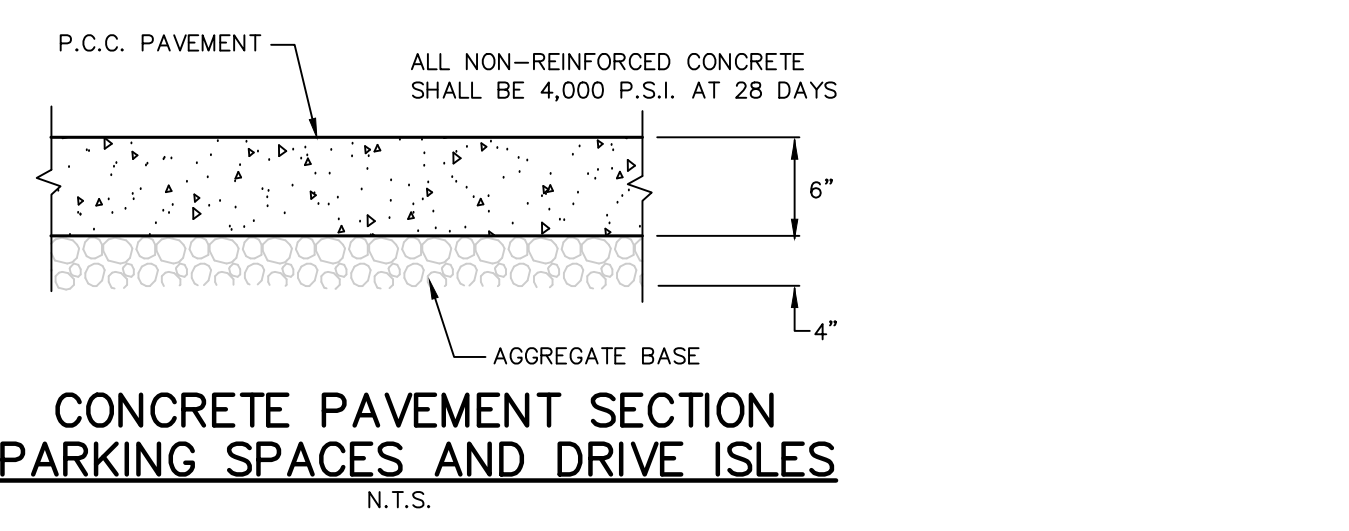
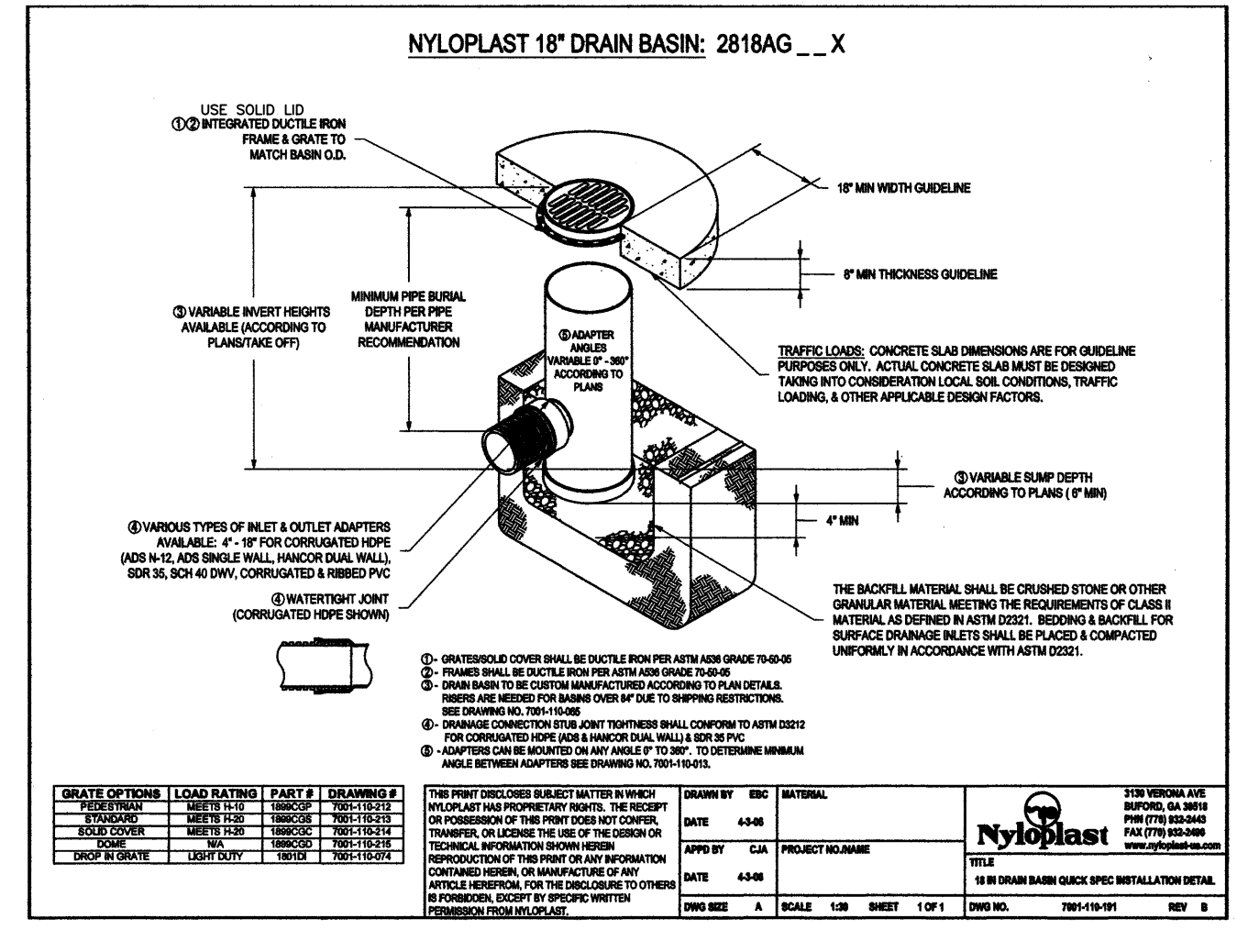
**FLUSH CURB DETAIL**  
N.T.S.



**SAMPLE TEE**  
N.T.S.



**DOWNSPOUT COLLECTOR DETAIL**  
NO SCALE



**CONCRETE PAVEMENT SECTION PARKING SPACES AND DRIVE ISLES**  
N.T.S.

**SARIS BIKE DOCK**

Two bike docks in a simple and sturdy design that provide space efficiency, high security and prevent tire flats between the dock and park, which provides better security.

**Product Details**

- 14\"/>

**Bike Dock**

**Recommended Spacing**

**Product Details**

- 14\"/>

**C. Planting Procedures For Potted Or Balled And Burlapped Trees**

1. Optimal time for planting trees is the fall or early spring, when the tree is dormant. Planting trees at other times is discouraged due to increased stress on the tree. If you have any questions on planting times contact the O'Fallon Parks and Recreation Department.
2. The hole should be dug with the width three (3) times the spread of the root ball no deeper than the root ball. Holes should have slanted sides and be roughed with a shovel.
3. Trees will be planted no deeper than the original root flare. Do not confuse a graft union for the root flare. In clay soils trees can be planted slightly high. Excavation and soil replacement may be necessary where there is overly compacted subsoil and excessive amounts of gravel.
4. Remove tree from pot or cut away twine or rope from stem and wire basket below ground level. When possible, roll back burlap from top and cut off top one-third (1/3) of the wire basket. Always remove all plastic twine and artificial burlap.
5. Straighten tree and completely backfill hole with existing soil. Avoid using excessive amounts of organic matter.
6. Apply water to settle the soil and eliminate any voids. At this time a solution of root stimulator (not fertilizer) can be watered in.
7. Chop up any dirt clods, add soil if needed.
8. Place two (2) to four (4) inch layer of mulch around the tree in a minimum three (3) foot radius. Make sure that the mulch is not mounded against the base of the tree trunk.

Rev. Per O'Fallon Comments

4/26/18

4/17/18

3/29/18

3/6/18

RELOCATE WATER

Comment

1ST SUB TO CITY OF OFFALON

6/7/17

Rev. Per O'Fallon Comments

8/3/17

9/25/17

9/29/17

10/21/17

11/25/17

2/22/18

Rev. Per O'Fallon Comments

Rev. Per Modot comments

Rev. per city comments

Rev. per O'Fallon comments

Recise subwork on Autocore

Missouri Office  
5500 Cahill Rd.  
St. Louis, Missouri 63128  
Phone: (314) 484-9191  
Fax: (314) 667-1716

Engineered By:

**DOERING**

**ENGINEERING Inc.**

CIVIL ENGINEERING • PLANNING • SURVEYING

Seal

STATE OF MISSOURI

MARK A. DOERING

1/26/18

MARK A. DOERING

CIVIL ENGINEER E-23059

4/26/18

MO. EXPIRATION DATE:

DECEMBER 31 2018

IL. EXPIRATION DATE:

APRIL 30 2019

MO. CORPORATE

LICENSE NO. 001947

IL CORPORATE

LICENSE NO. 184.000335

**BLUE IGUANA CAR WASH**

**1008 HIGHWAY K**

**O'FALLON, MO 63366**

**DETAILS**

Date: 6/7/17

Project Number: 16028

File Name: 16028\_CD2

Drawn By: JAD

Sheet

Check By: MAD

**C10**