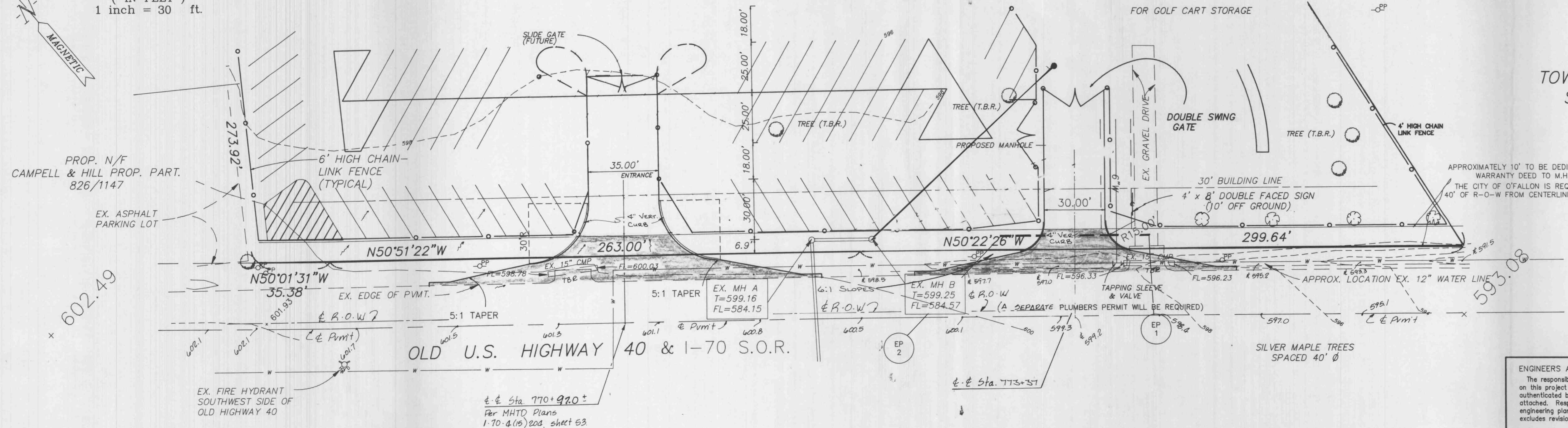
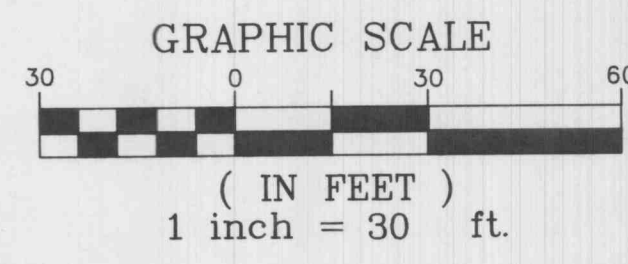


BLUE RIBBON STORAGE

PART OF U.S. SURVEY 55,
TOWNSHIP 47 NORTH, RANGE 3 EAST,
ST. CHARLES COUNTY, MISSOURI

REV. 4-2-92 DR
REV. 3-17-92 TD - & STA.

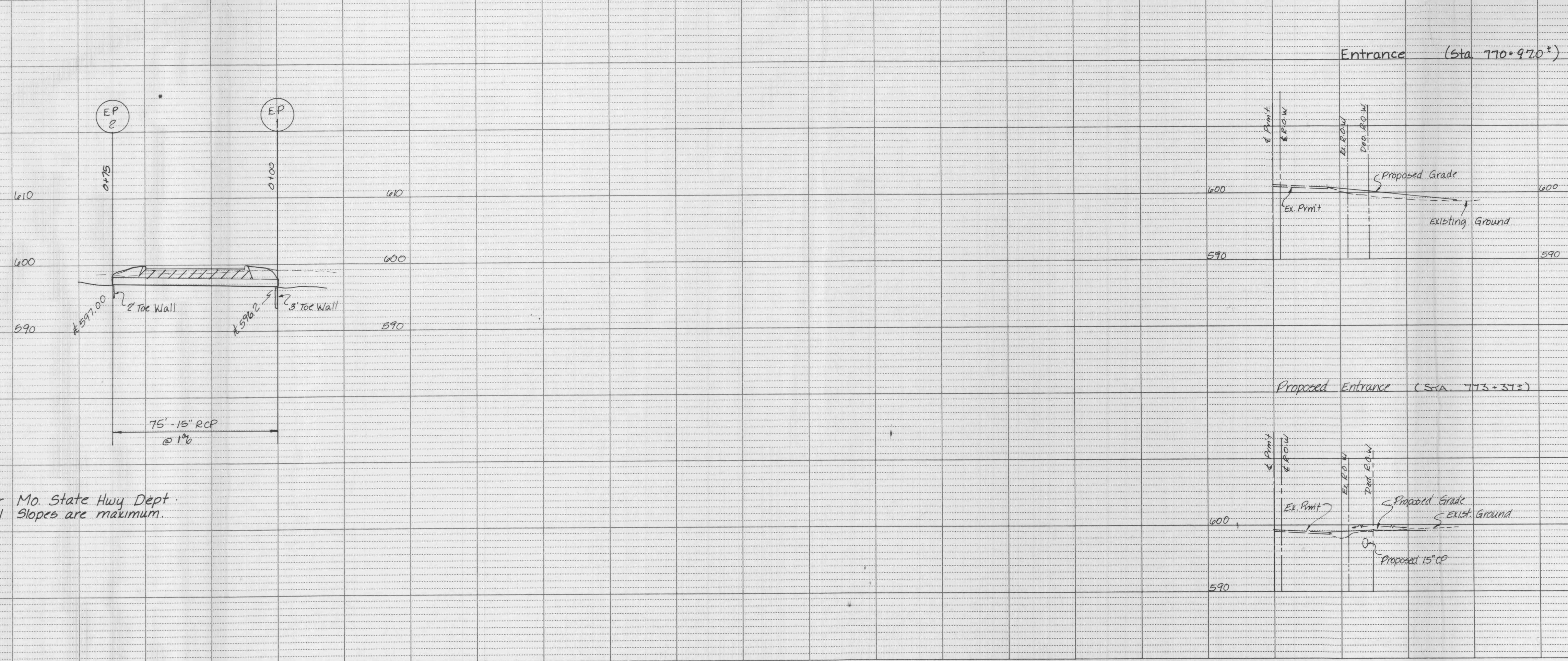


DATE	
BY	
SURVEYED	
ALIGNED	
CHECKED	
NOTE BOOK	
NO.	

- | | |
|--|--|
| CONCRETE SURFACE | ASPHALT SURFACE |
| 6 Sack Mix | 8" Rolled Stone Base or 6" Type X (Black Base) |
| 8" Concrete | 3" Asphalt Top (Type C) |
| 6x6x6 Steel Mesh (3" below finished grade) | Machine Laid |
| 3/4" Expansion Material | Asphalt Curb (6" Vertical) |
| 4" Rolled Stone Base | |
| Integral Concrete Curb (6" Vertical) | |
| (5/8" Steel Dowels @ 2' C-C) | |

ENGINEERS AUTHENTICATION The responsibility for professional engineering liability on this project is hereby limited to the set of plans authenticated by the seal, signature and date hereunder attached. Responsibility is disclaimed for all other engineering plans involved in this project and specifically excludes revisions after this date unless reauthenticated.		PICKETT RAY & SILVER Civil Engineers Planners Land Surveyors 333 Mid Rivers Mall Dr. St. Peters, MO 63376 441-1211 278-1211	
DRAWN BC/TD DATE MARCH, 1992 CHECKED DATE		PREPARED FOR: FRANK TEGETHOFF 7283 HIGHWAY N O'FA LO MISSOURI (314) 81-3763	
FIELD BOOK 120E	PROJECT # 84-011	JOB ORDER # 24141	3/8
Signature	Date		

DATE	
BY	
SURVEYED	
GRADES CHECKED	
NOTE BOOK	
NO.	



Note:
Per Mo. State Hwy Dept.
6:1 Slopes are maximum.