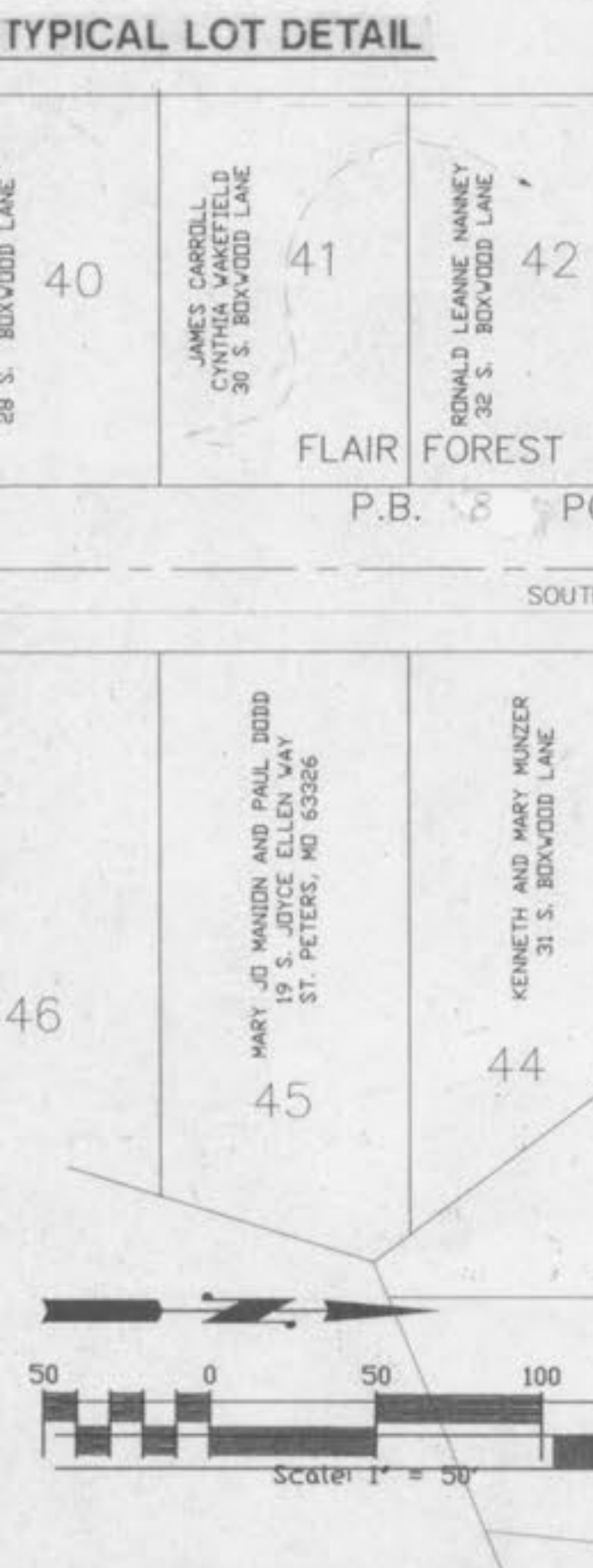
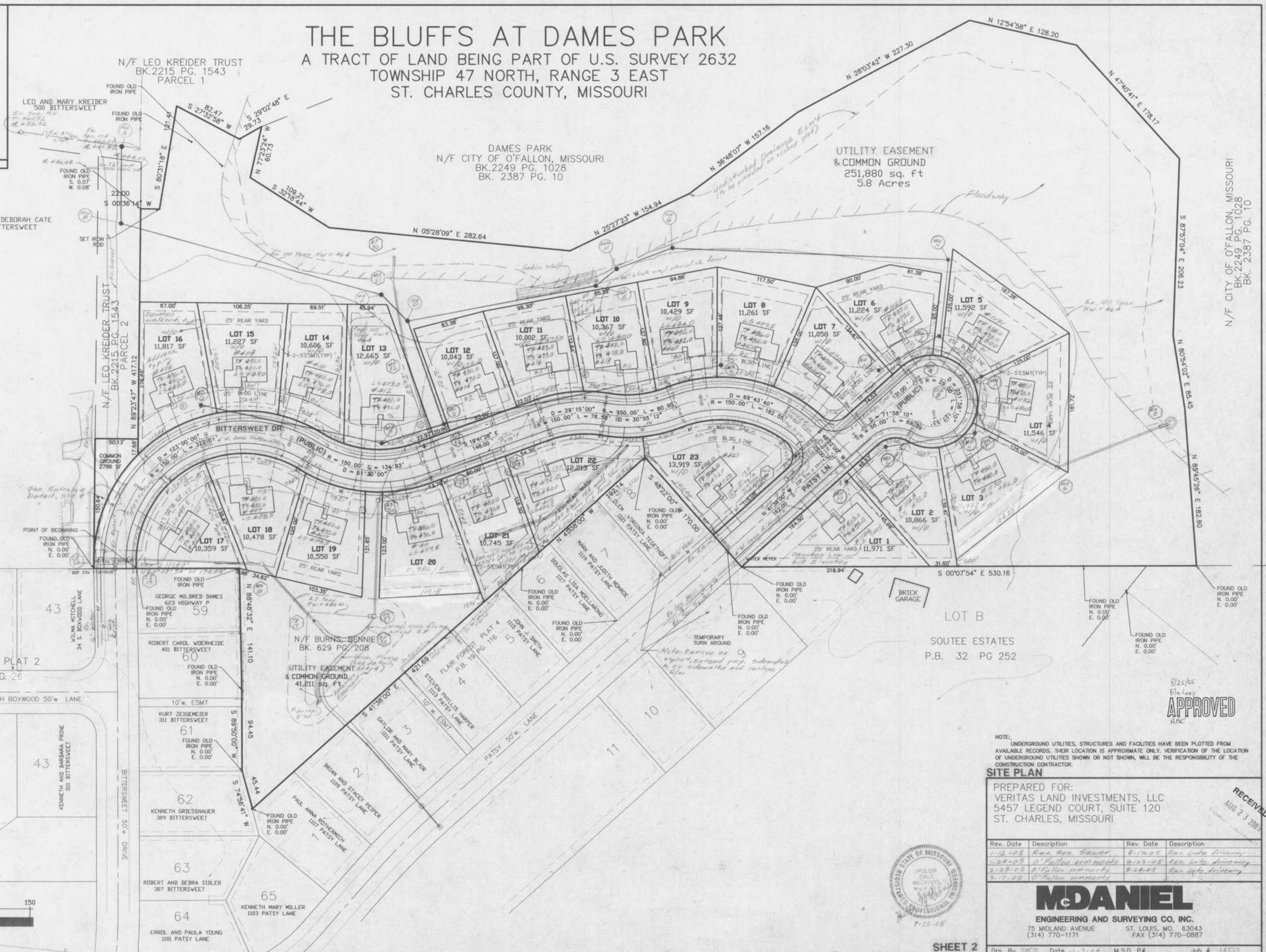
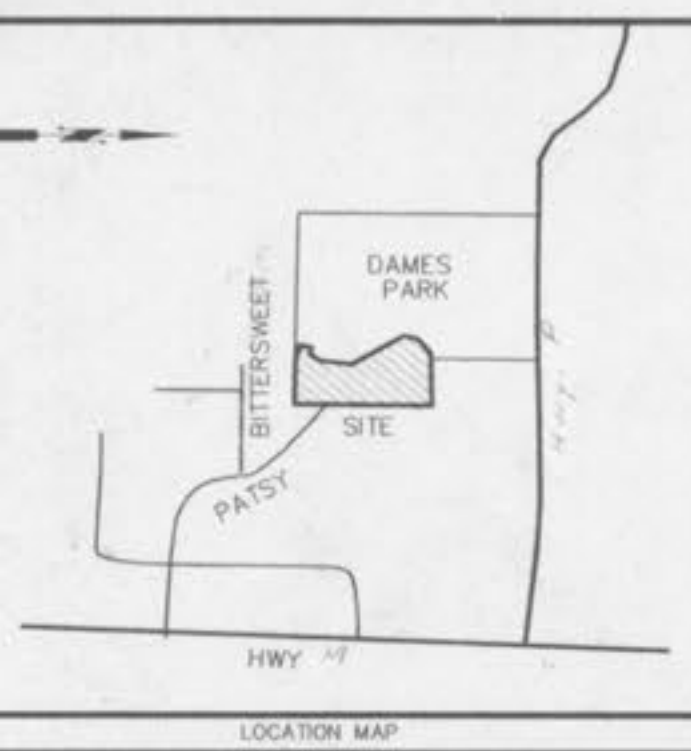


THE BLUFFS AT DAMES PARK

A TRACT OF LAND BEING PART OF U.S. SURVEY 2632
TOWNSHIP 47 NORTH, RANGE 3 EAST
ST. CHARLES COUNTY, MISSOURI



8/25/05
File Copy
APPROVED
ABC

NOTE:
UNDERGROUND UTILITIES, STRUCTURES AND FACILITIES HAVE BEEN PLOTTED FROM AVAILABLE RECORDS. THEIR LOCATION IS APPROXIMATE ONLY. VERIFICATION OF THE LOCATION OF UNDERGROUND UTILITIES SHOWN OR NOT SHOWN, WILL BE THE RESPONSIBILITY OF THE CONSTRUCTION CONTRACTOR.

SITE PLAN
PREPARED FOR:
VERITAS LAND INVESTMENTS, LLC
5457 LEGEND COURT, SUITE 120
ST. CHARLES, MISSOURI

Rev. Date	Description	Rev. Date	Description
1-2-05	Rev. Gen. Sewer	8-12-05	Rev. Info. driveway
1-24-05	O'Fallon comments	9-23-05	Rev. Info. driveway
2-28-05	O'Fallon comments	8-24-05	Rev. Info. driveway
3-12-05	O'Fallon comments		



MDANIEL
ENGINEERING AND SURVEYING CO., INC.
75 MIDLAND AVENUE ST. LOUIS, MO. 63043
(314) 770-1171 FAX (314) 770-0887

N/F CITY OF O'FALLON, MISSOURI
BK. 2249 PG. 1028
BK. 2387 PG. 10

RECEIVED
AUG 23 2004