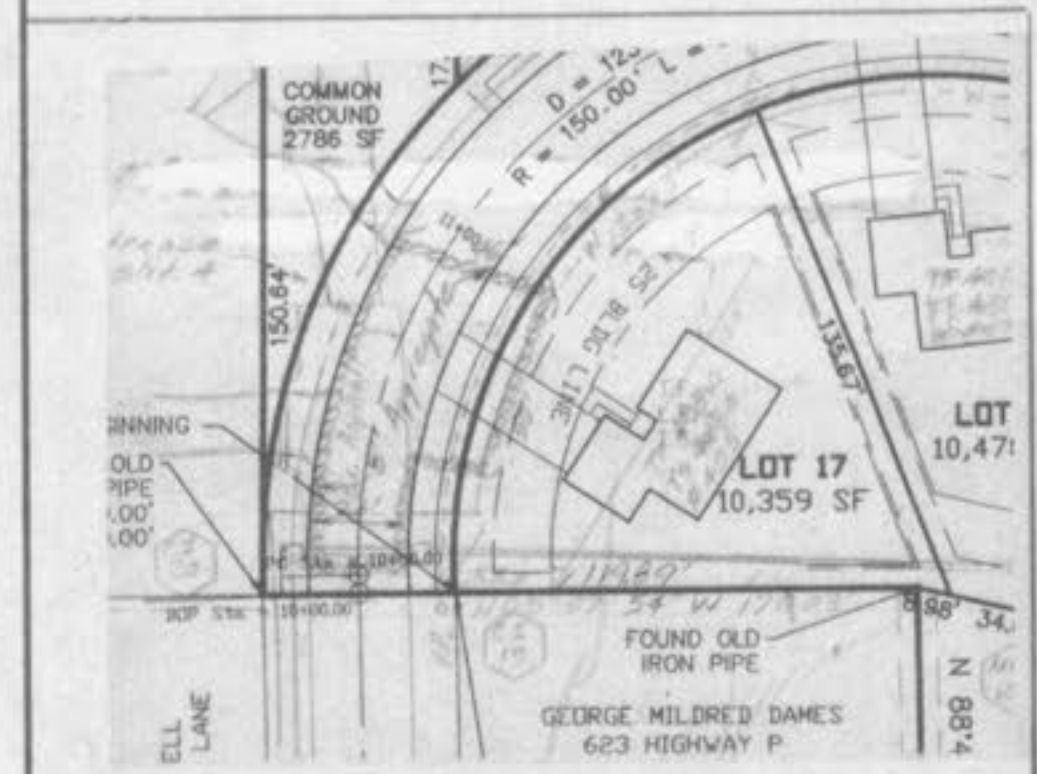
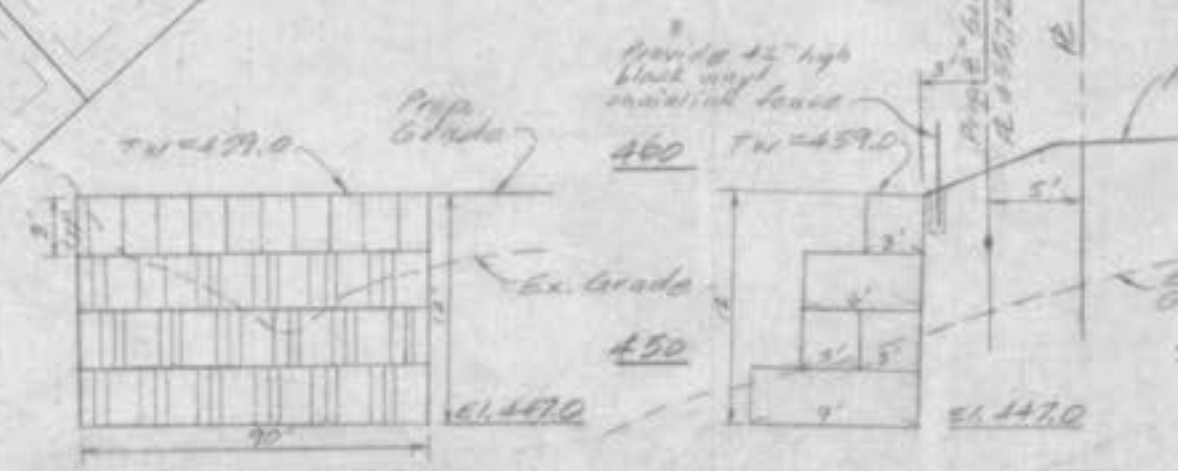
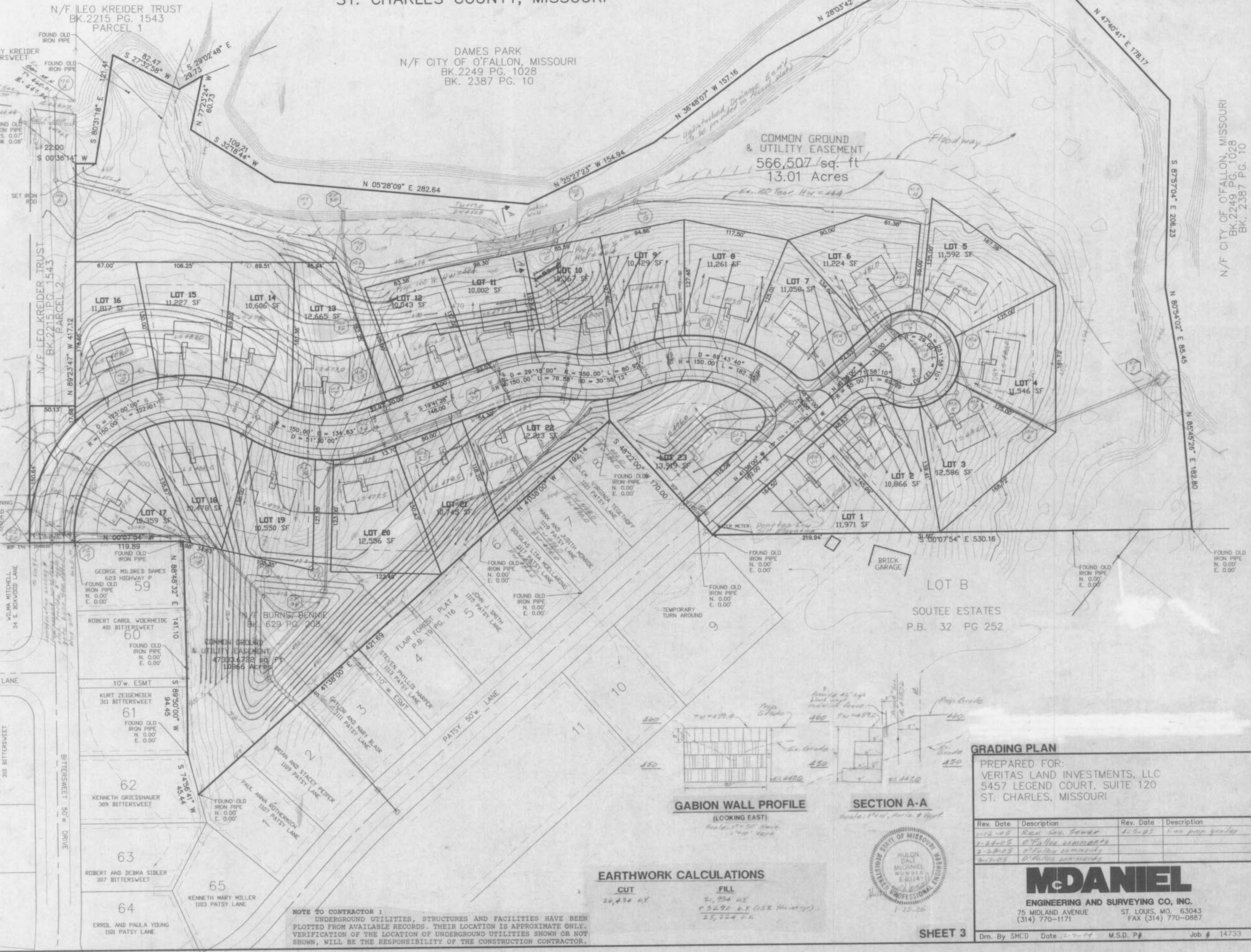
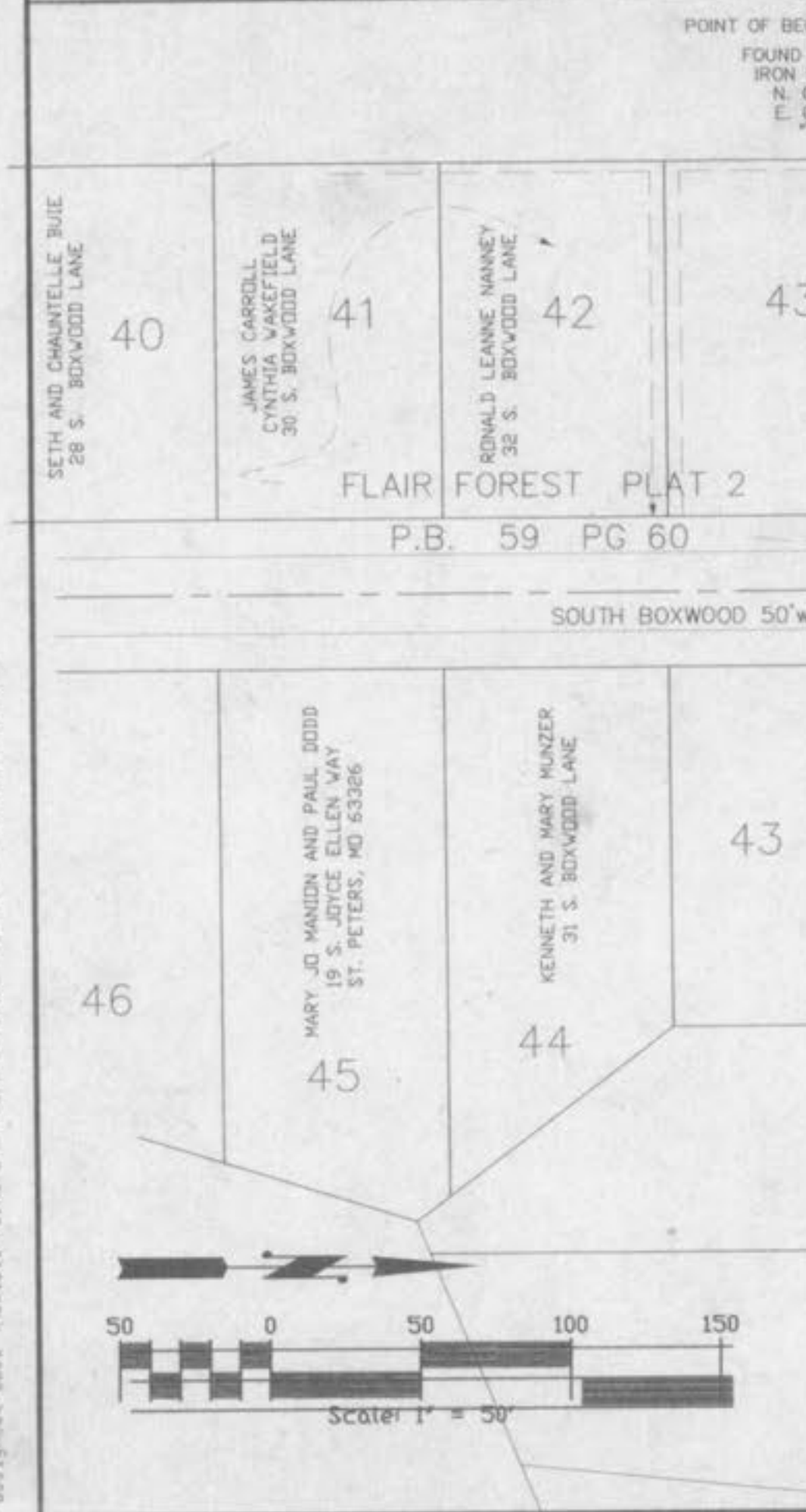


THE BLUFFS AT DAMES PARK

A TRACT OF LAND BEING PART OF U.S. SURVEY 2632
TOWNSHIP 47 NORTH, RANGE 3 EAST
ST. CHARLES COUNTY, MISSOURI



- CONSTRUCTION SPECIFICATIONS**
- Stone Size: Use 2" stone or reclaimed or recycled concrete equivalent.
 - Length: As required, but not less than 50 feet (except on a single residence lot where a 30 foot minimum length would apply).
 - Thickness: Not less than six (6) inches.
 - Width: Twenty six (26) foot minimum, but not less than the full width of points where ingress or egress occurs.
 - Filter Cloth: Will be placed over the entire area prior to placing of the stone. Filter will not be required on a single family residence lot.
 - Maintenance: The entrance shall be maintained in a condition which will prevent tracking or flowing of sediment onto a public right-of-way. This may require periodic top dressing with additional stone as conditions demand and repair and/or cleanup of any measures used to trap sediment. All sediment spilled, dropped, washed or tracked onto the public right-of-way must be removed immediately.
 - Washing: Wheels shall be cleaned to remove sediment prior to entrance onto the public right-of-way. When washing is required, it shall be done on an area stabilized with stone and which drains into an approved sediment trapping device.
 - Periodic inspection and needed maintenance shall be provided after each rain.
- STABILIZED CONSTRUCTION ENTRANCE**
1"=30'



EARTHWORK CALCULATIONS

CUT	FILL
26,434 cu yd	21,934 cu yd
	+ 3290 cu yd (10% Shrinkage)
	25,224 cu yd

GRADING PLAN
PREPARED FOR:
VERITAS LAND INVESTMENTS, LLC
5457 LEGEND COURT, SUITE 120
ST. CHARLES, MISSOURI

Rev. Date	Description	Rev. Date	Description
1-12-05	Rev. San. Sewer	1-2-05	Low prop. grades
1-24-05	O'Fallon comments		
2-28-05	O'Fallon comments		
3-7-05	O'Fallon comments		



MDANIEL
ENGINEERING AND SURVEYING CO., INC.
75 MIDLAND AVENUE ST. LOUIS, MO. 63043
(314) 770-1171 FAX (314) 770-0887

C:\VESTO\VEST01.DWG Thu Dec 02 13:16:06 2004
HP DesignPlot 250C Hewlett-Packard HP-GL/2 drivers, A01 4,3 - for Autodesk by HP