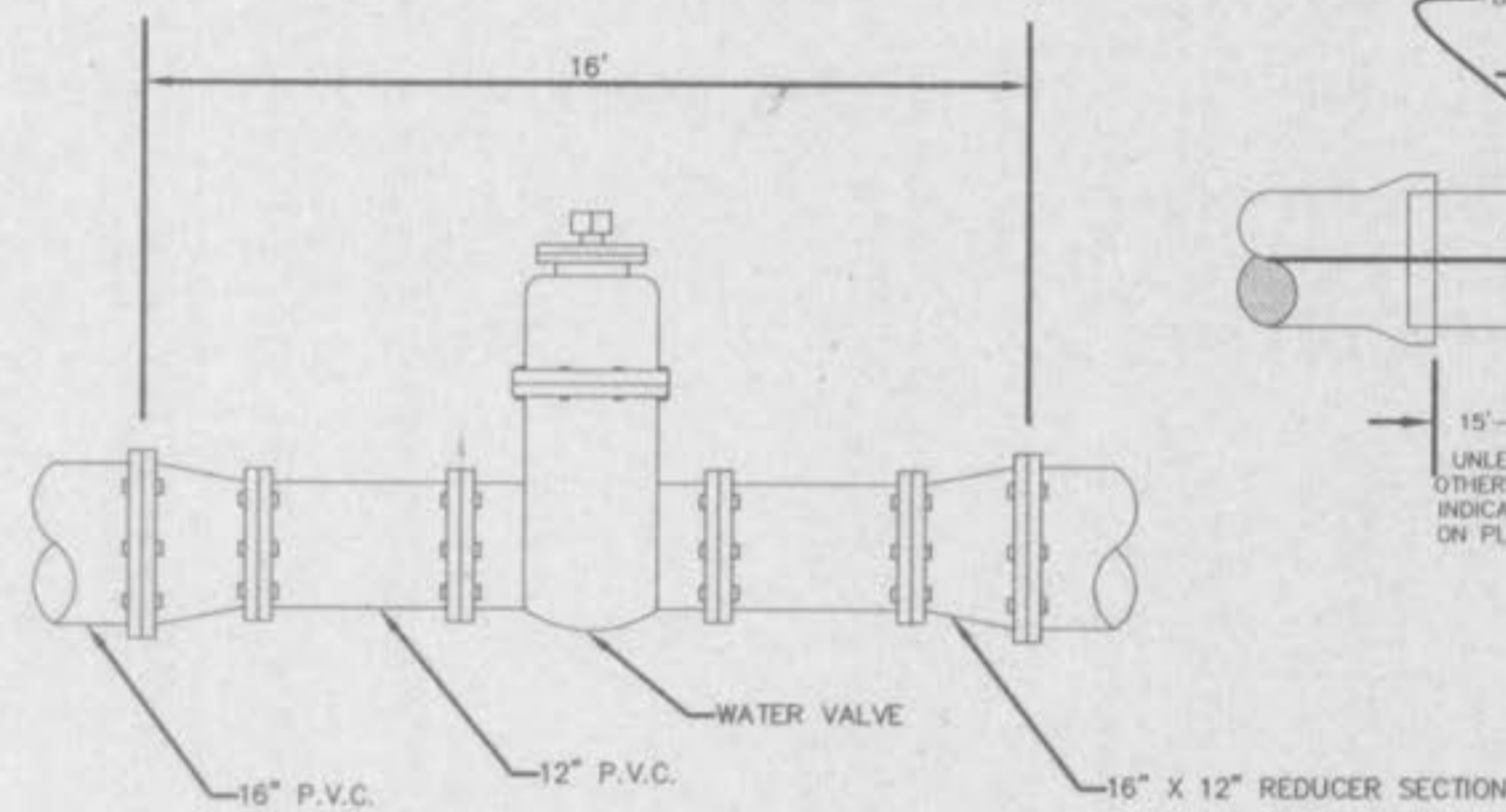
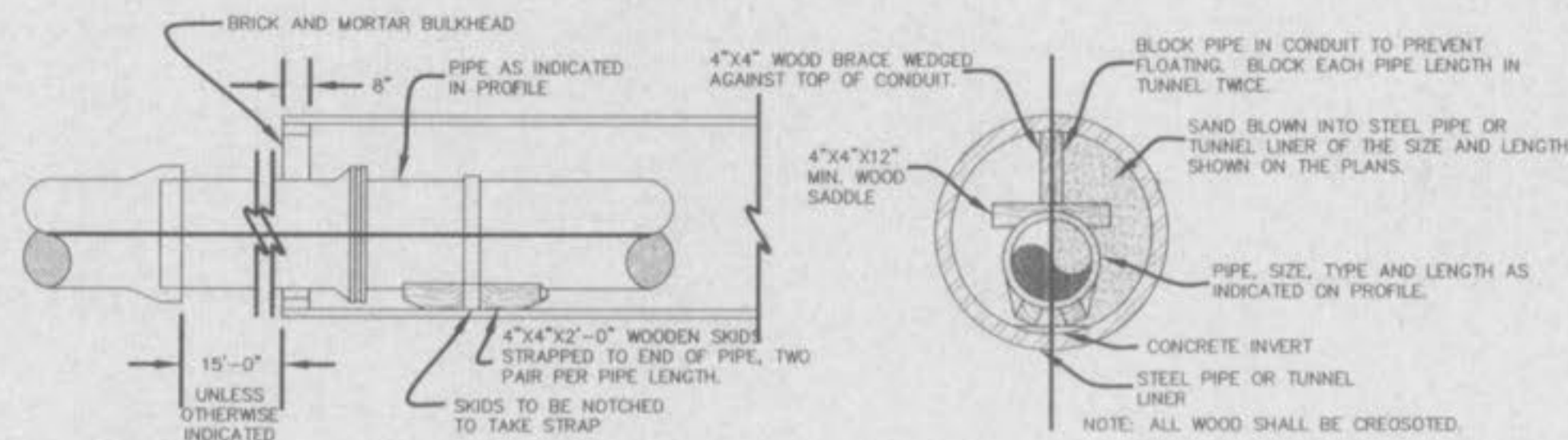


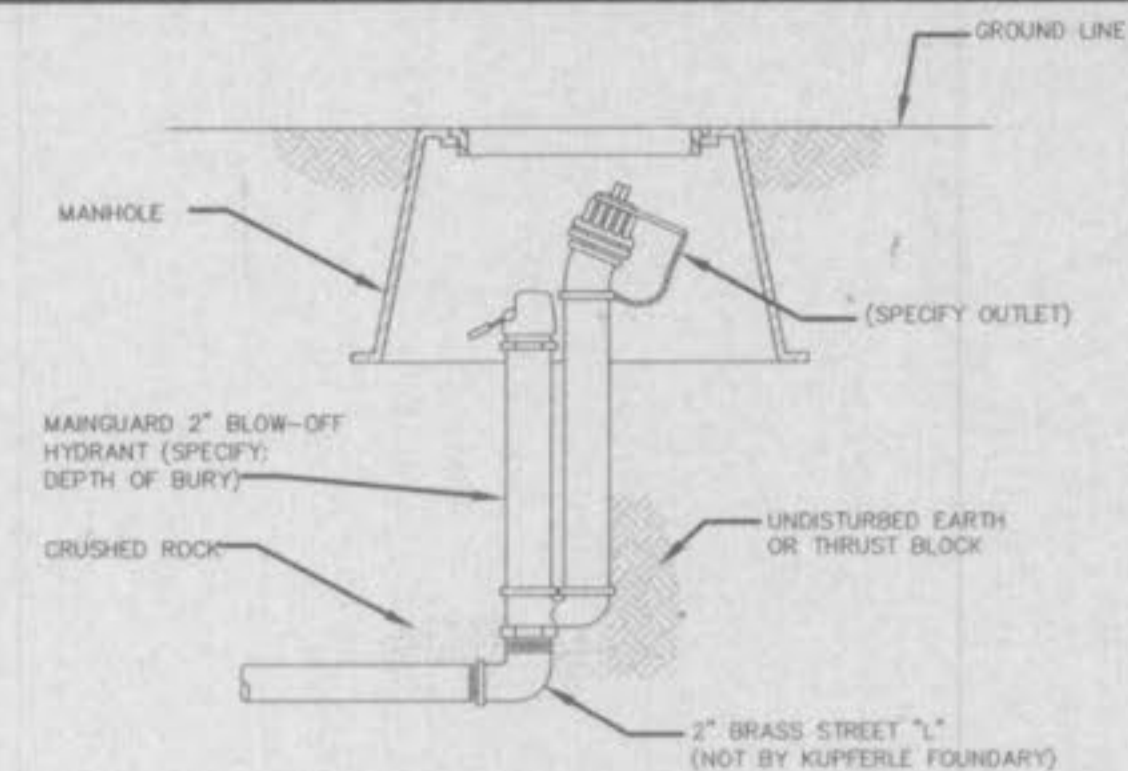
TYPICAL WATER MAIN AND FIRE HYDRANT LOCATIONS
NOT TO SCALE



REDUCER DETAIL
NOT TO SCALE



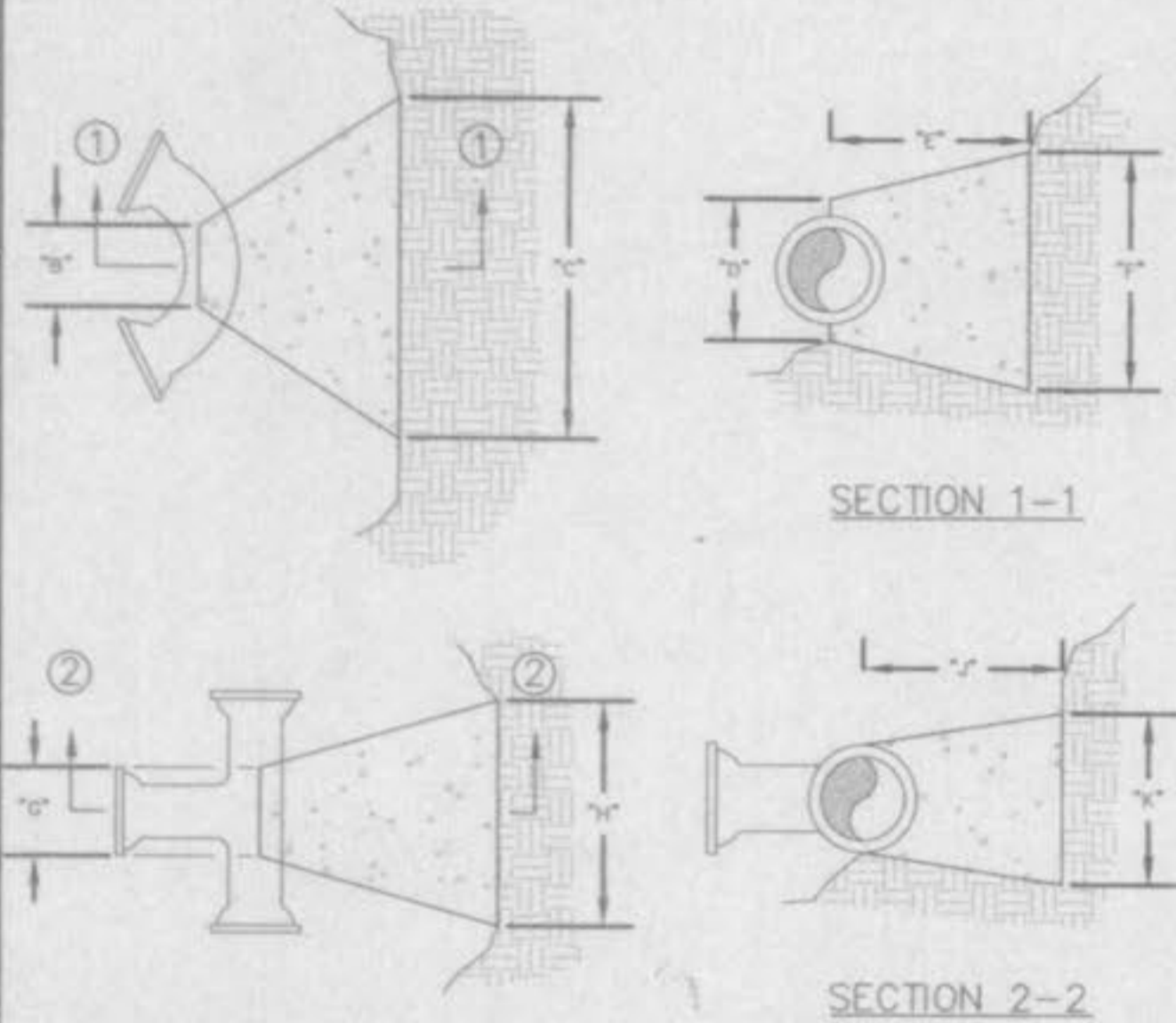
TUNNEL LINER DETAIL
NOT TO SCALE



BLOW-OFF HYDRANTS SHALL BE NON-FREEZING, SELF DRAINING TYPE, WITH AN OVERALL LENGTH OF SET UNDERGROUND IN A METER BOX. THESE HYDRANTS WILL BE FURNISHED WITH A 2" FIP INLET, A NON-TURNING OPERATING ROD, AND SHALL OPEN TO THE LEFT. ALL OF THE WORKING PARTS SHALL BE OF BRONZE-TO BRONZE DESIGN, AND BE SERVICEABLE FROM ABOVE GRADE WITH NO DRIVING. THE OUTLET SHALL ALSO BE BRONZE AND BE 2-1/2" NST. HYDRANTS SHALL BE LOCKABLE TO PREVENT UNAUTHORIZED USE AS MANUFACTURED BY KUPFERLE FOUNDRY CO., ST. LOUIS, MO, OR APPROVED EQUAL.

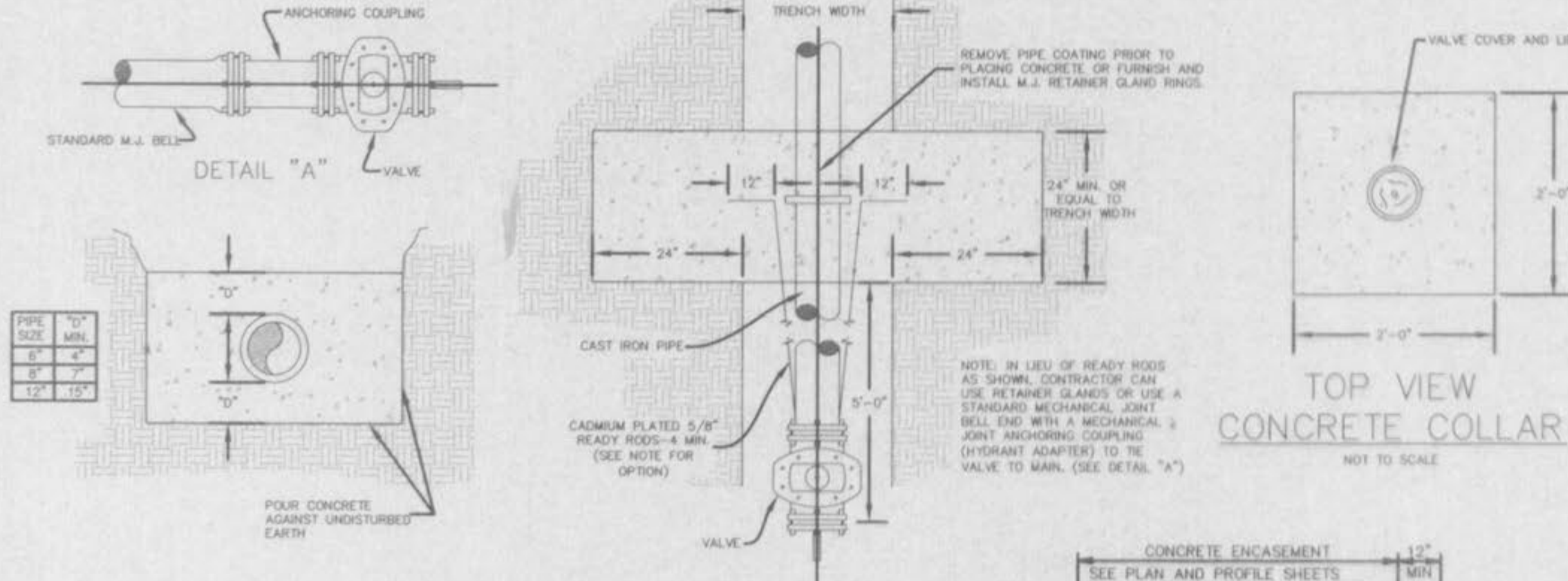
(SPECIFY OVERALL LENGTH 6" SHORTER THAN NORMAL DEPTH OF BURY. MINIMUM OPENING IN METER BOX SHOULD BE 10".)

BLOW-OFF HYDRANT
NOT TO SCALE



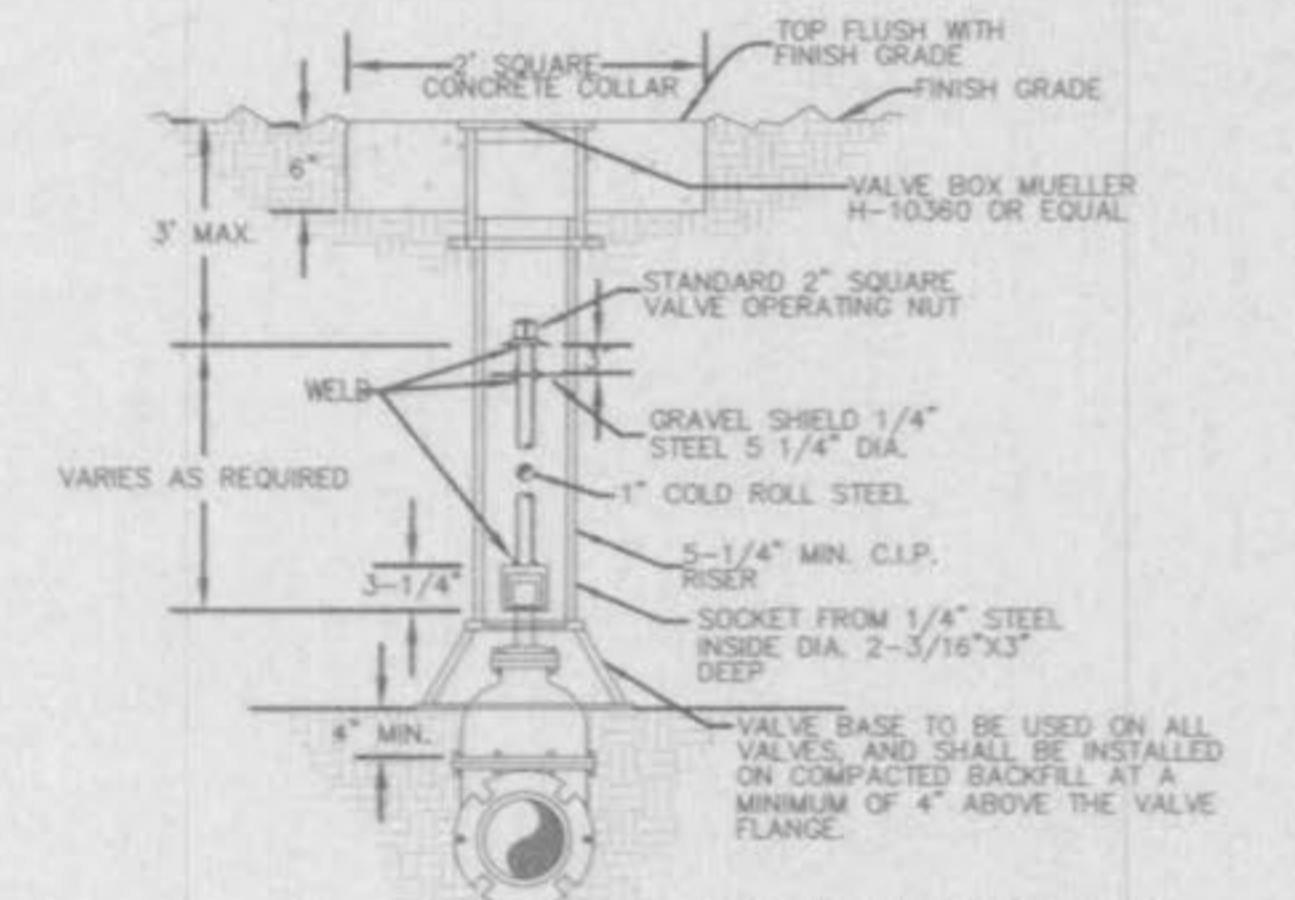
SECTION 1-1

SECTION 2-2



STRADDLE BLOCK DETAIL
NOT TO SCALE

TOP VIEW CONCRETE COLLAR
NOT TO SCALE



NOTE: EMBEDMENT NOT SHOWN. INSTALL PER GENERAL NOTES OR PLAN SHEETS.

WATER VALVE DETAIL
(12" PIPE OR SMALLER)
NOT TO SCALE

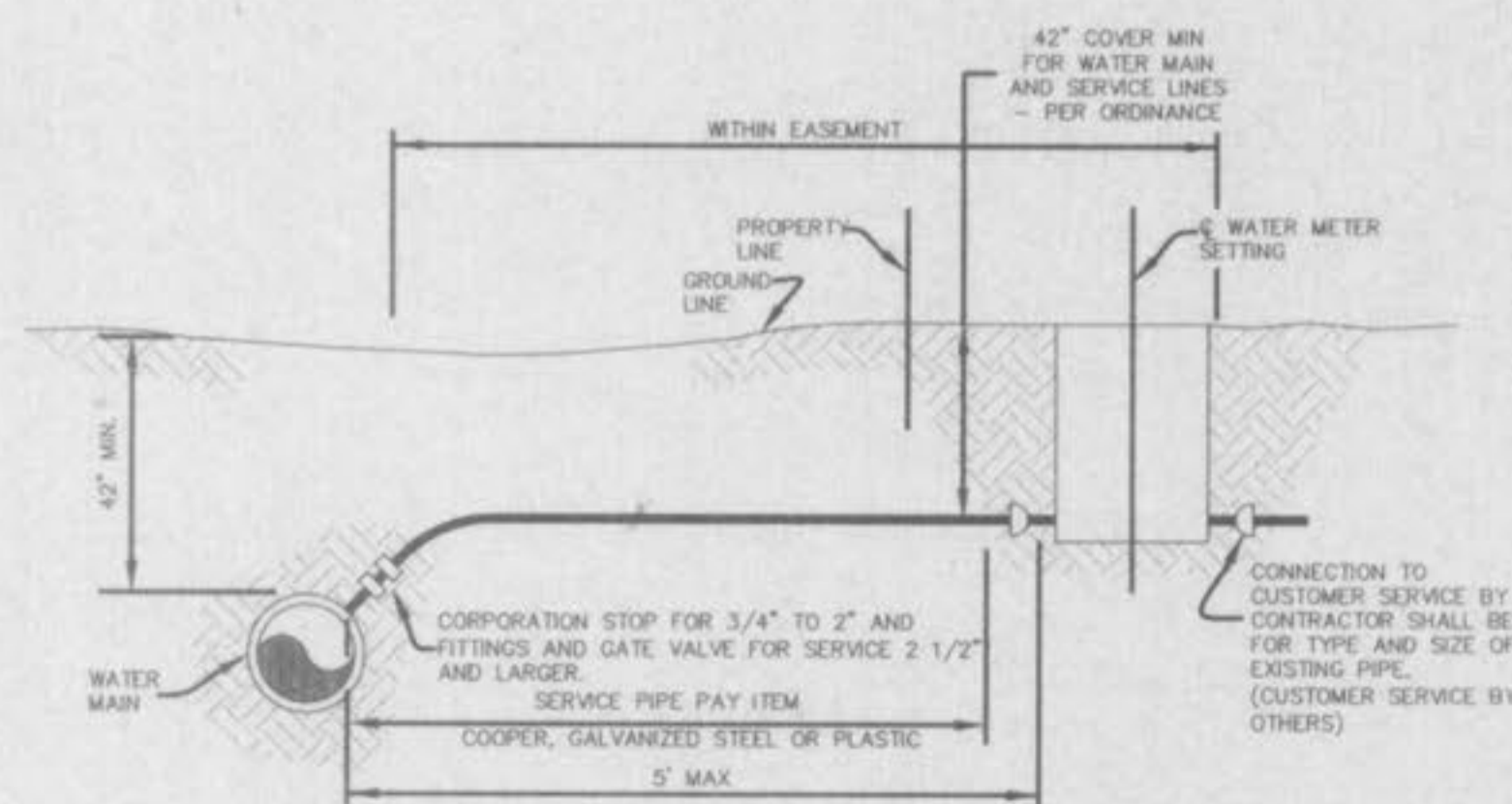
BENDS	70"	70"	70"	70"	70"
6"-11 1/4"	8"	15"	12"	24"	10"
6"-22 1/2"	8"	19"	12"	24"	13"
6"-45"	8"	30"	12"	24"	15"
6"-90"	8"	30"	12"	24"	28"
8"-11 1/4"	8"	20"	12"	24"	10"
8"-22 1/2"	8"	22"	12"	24"	18"
8"-45"	8"	31"	12"	24"	24"
8"-90"	8"	38"	12"	24"	36"
12"-11 1/4"	8"	36"	12"	24"	15"
12"-22 1/2"	8"	35"	12"	24"	25"
12"-45"	8"	40"	12"	24"	40"
12"-90"	8"	60"	12"	24"	52"
16"-11 1/4"	11"	28"	20"	24"	28"
16"-22 1/2"	11"	30"	20"	24"	38"
16"-45"	11"	50"	20"	24"	55"
16"-90"	11"	91"	20"	24"	60"
20"-11 1/4"	11"	34"	24"	26"	28"
20"-22 1/2"	11"	48"	24"	26"	39"
20"-45"	11"	74"	24"	26"	50"
20"-90"	11"	136"	24"	26"	60"
24"-11 1/4"	11"	40"	28"	28"	40"
24"-22 1/2"	11"	35"	28"	28"	56"
24"-45"	11"	101"	28"	28"	60"
24"-90"	11"	186"	28"	28"	60"
30"-11 1/4"	11"	49"	34"	30"	49"
30"-22 1/2"	11"	79"	34"	30"	60"
30"-45"	11"	154"	34"	30"	60"
30"-90"	11"	285"	34"	30"	60"

TEES	6"	7"	8"	10"
6"x6"x6"	12"	24"	24"	18"
6"x8"x8"	12"	24"	24"	18"
6"x8"x8"	12"	24"	24"	27"
12"x12"x6"	12"	24"	24"	18"
12"x12"x8"	12"	27"	27"	27"
12"x12"x12"	12"	38"	24"	38"
24"x24"x16"	16"	53"	28"	53"

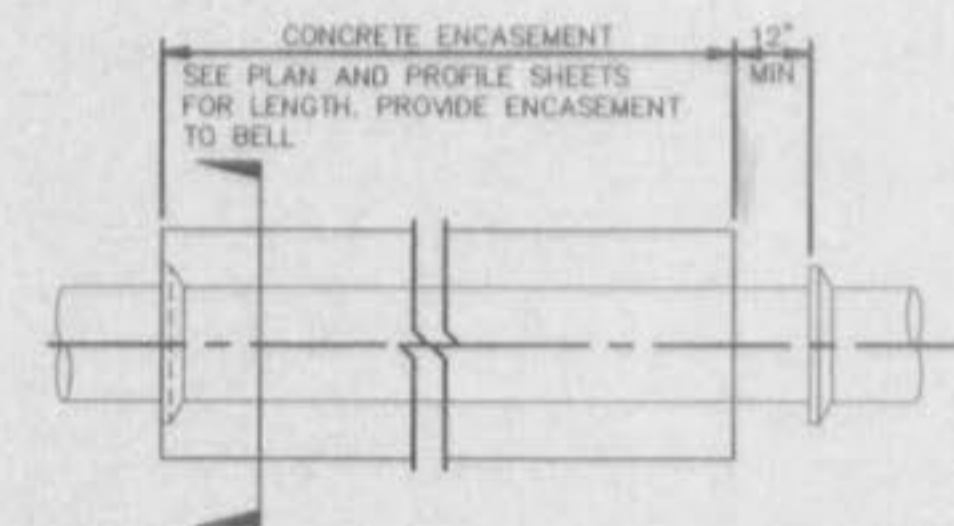
NOTES:
1. 2" & 4" FITTINGS EQUIVALENT TO 8" FITTINGS.
2. TAPPING SLEEVES TO HAVE BACKING BLOCKS SAME SIZE AS REQUIRED FOR TEES.
3. "IL" = TOTAL LENGTH OF FITTING MINUS CLEARANCE FOR BELLS.

INTERNAL WATER PRESSURE 6" THRU 12"=200 psi
INTERNAL WATER PRESSURE 16" THRU 30"=210 psi
BEARING PRESSURE OF SOIL=2000 psi

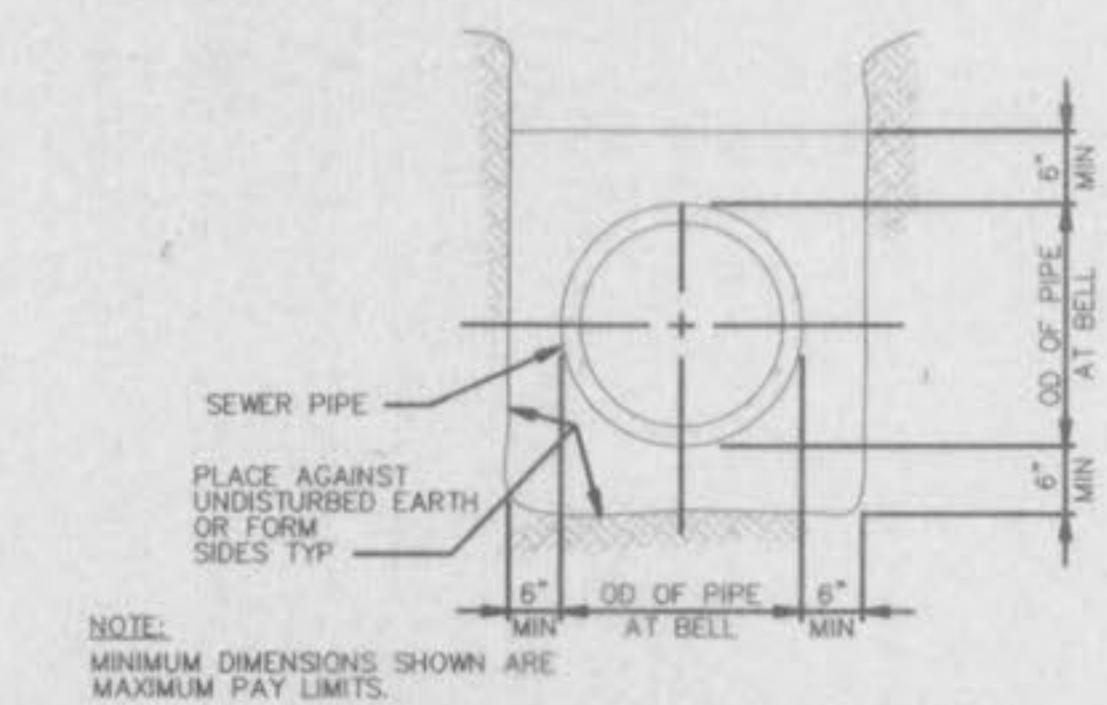
BACKING BLOCKS
NOT TO SCALE



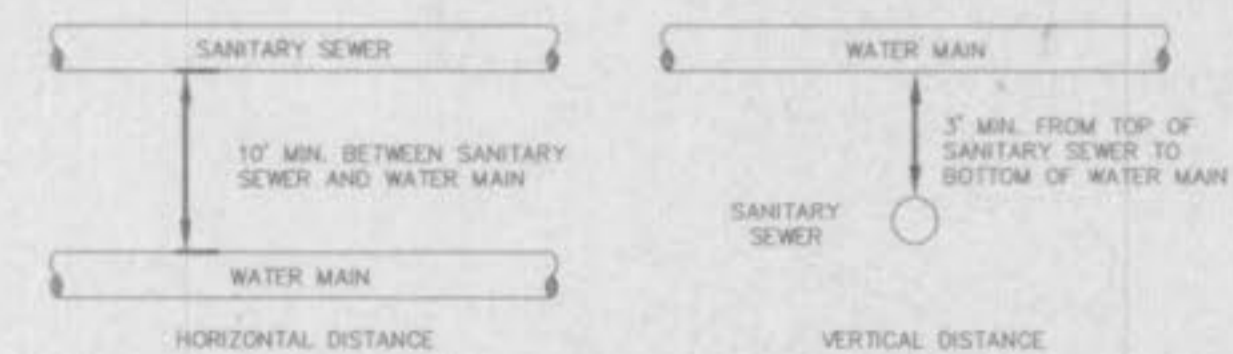
TYPICAL SERVICE ASSEMBLY
NOT TO SCALE



ELEVATION



CONCRETE ENCASEMENT DETAILS
NOT TO SCALE



TYPICAL WATER AND SEWER SEPERATION
NOT TO SCALE